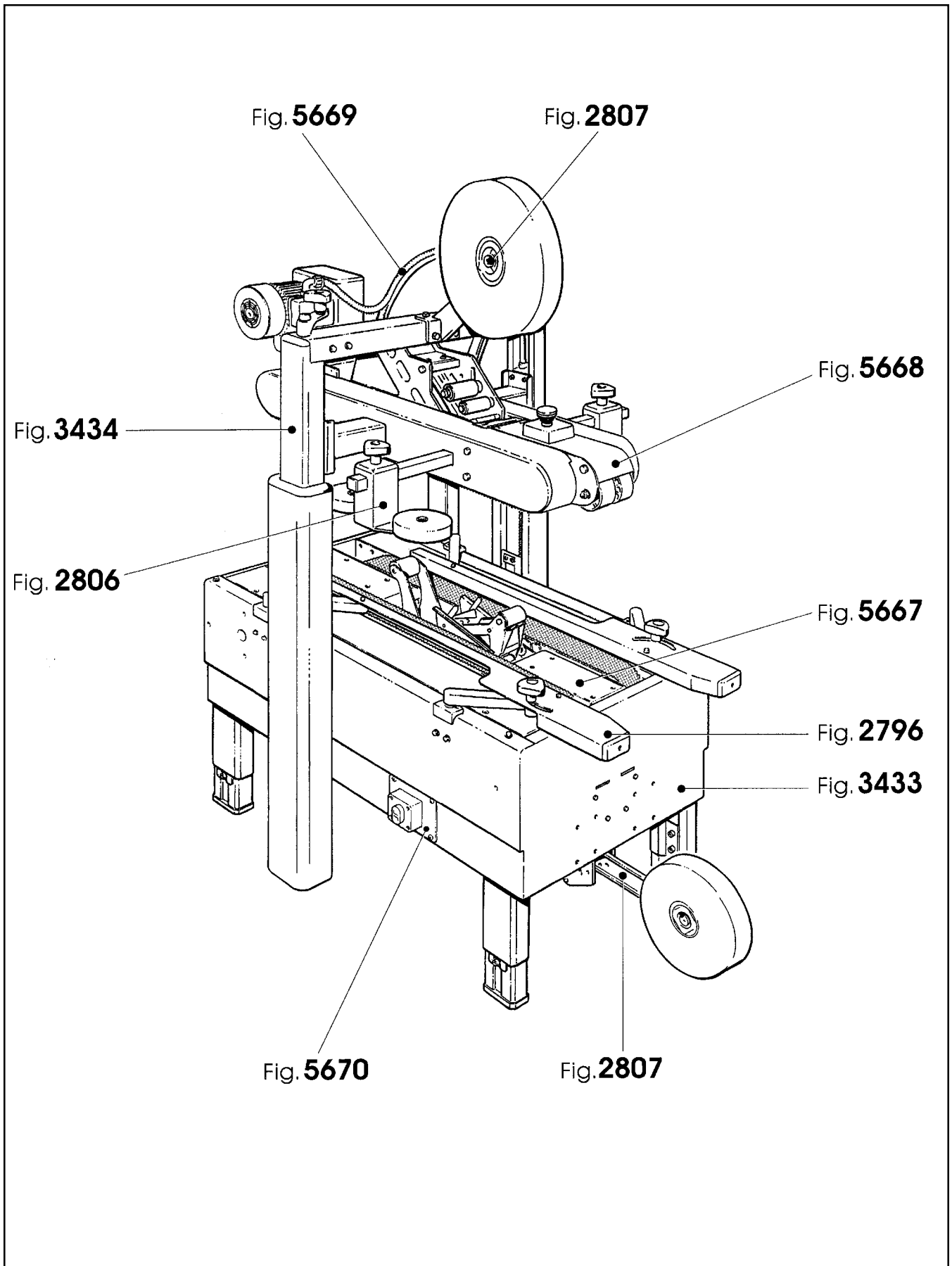


700a Adjustable Case Sealer



Frame Assemblies

700a Adjustable Case Sealer

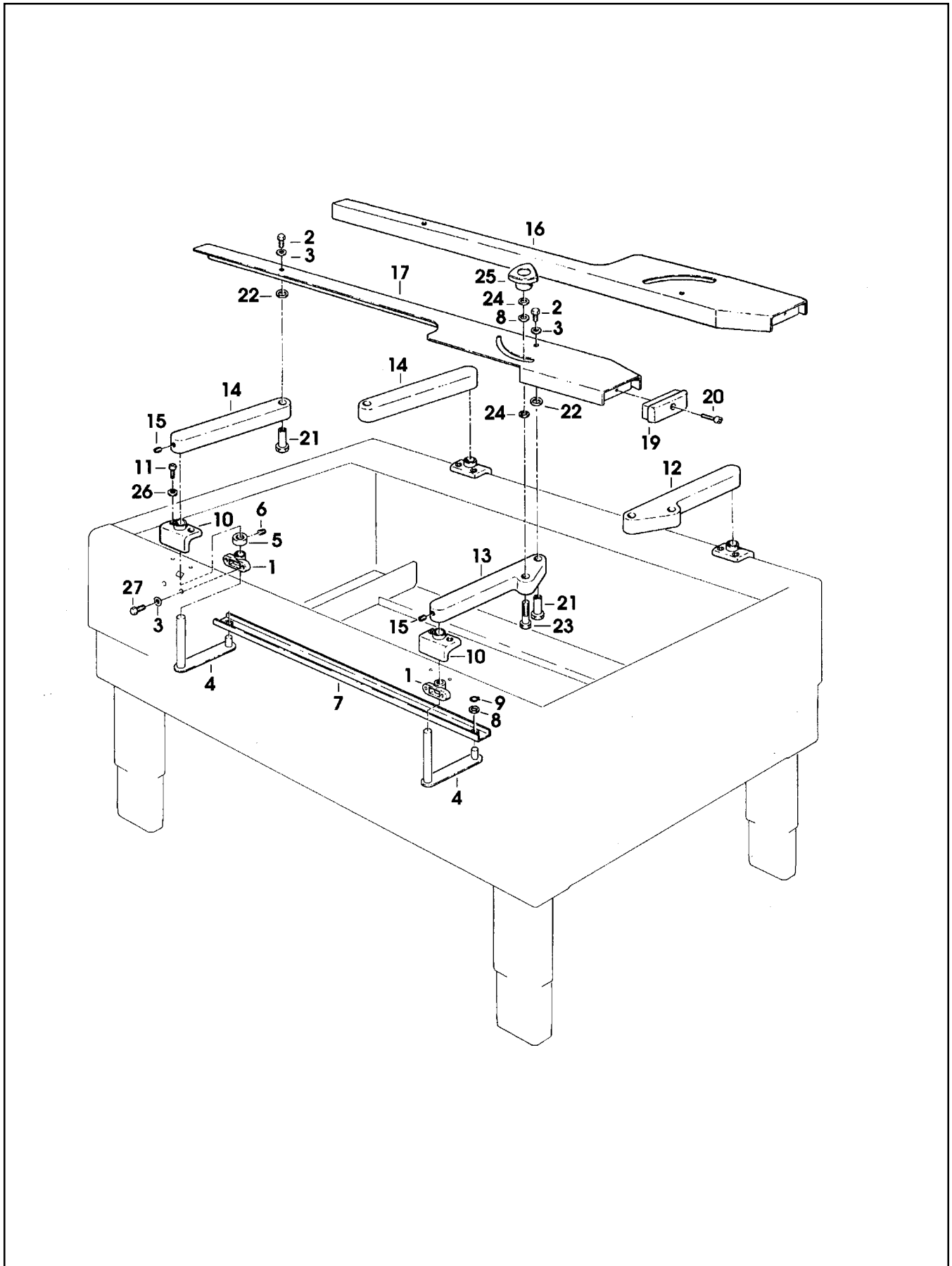


Figure 2796

Figure 2796

Ref. No.	3M Part No.	Description
2796-1	78-8070-1536-3	Support – Guide Arm
2796-2	78-8010-7169-3	Screw – Hex Hd, M6 x 12
2796-3	26-1000-0010-3	Washer – Flat, M6
2796-4	78-8070-1537-1	Lever With Pivot
2796-5	78-8070-1538-9	Bushing
2796-6	26-1003-8816-9	Screw – Set, M5 x 6
2796-7	78-8070-1539-7	Link – Guide
2796-8	78-8017-9074-8	Washer – 15 mm, Nylon
2796-9	78-8052-6733-9	Ring – M10, Special
2796-10	78-8070-1540-5	Support – Lever
2796-11	78-8032-0382-3	Screw – Soc Hd, M5 x 16
2796-12	78-8070-1541-3	Guide Arm – Front, Right
2796-13	78-8070-1542-1	Guide Arm – Front, Left
2796-14	78-8070-1543-9	Guide Arm – Rear
2796-15	78-8076-4505-2	Screw – Set, M6 x 8
2796-16	78-8070-1544-7	Guide – Right
2796-17	78-8113-6792-5	Guide – Left, W/English Language Label
2796-19	78-8070-1546-2	Cap – Guide
2796-20	26-1003-7953-1	Screw – Soc Hd, M5 x 30
2796-21	78-8070-1547-0	Shaft - Guide
2796-22	78-8070-1548-8	Washer – 20 x 12, 5 x 1 Nylon
2796-23	26-1003-5852-7	Screw – Hex Hd, M10 x 40
2796-24	26-1004-5510-9	Washer – Plain, M10
2796-25	78-8070-1549-6	Knob – VTR-B-M10
2796-26	78-8005-5735-3	Washer – Lock, M5
2796-27	78-8032-0375-7	Screw – Hex Hd, M6 x 16

700a Adjustable Case Sealer

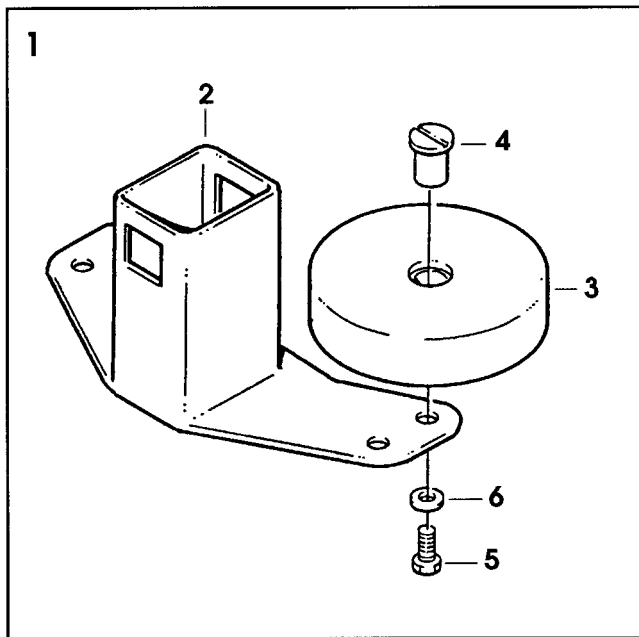
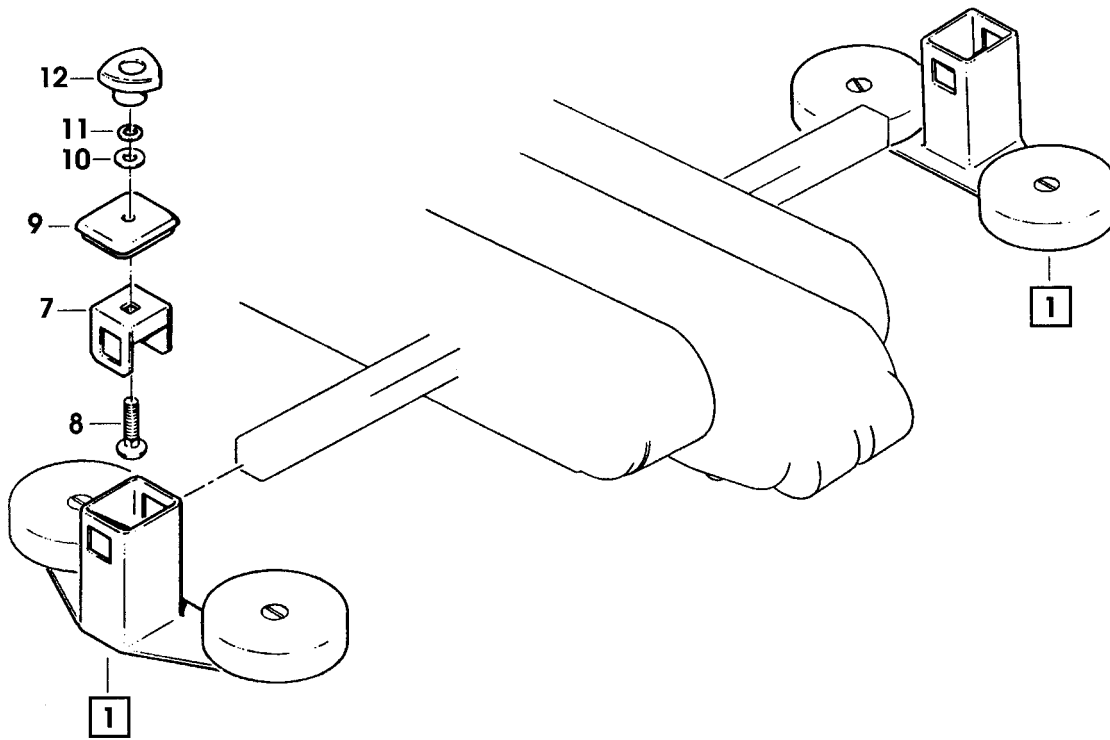


Figure 2806

Figure 2806

Ref. No.	3M Part No.	Description
2806-1	78-8076-4626-6	Compression Roller Assembly
2806-2	78-8076-4627-4	Support – Compression Roller
2806-3	78-8076-4628-2	Roller – Compression
2806-4	78-8076-4629-0	Shaft – Roller
2806-5	26-1003-5841-0	Screw – M8 x 16
2806-6	78-8017-9318-9	Washer – Plain 8 mm
2806-7	78-8076-4630-8	Plate – Tube, Roller
2806-8	78-8076-4631-6	Screw – M10 x 35
2806-9	78-8076-4632-4	Cap – Support
2806-10	78-8017-9074-8	Washer – Nylon 15 mm
2806-11	26-1004-5510-9	Washer – Plain, M10
2806-12	78-8070-1549-6	Knob – VTR-B-M10

700a Adjustable Case Sealer

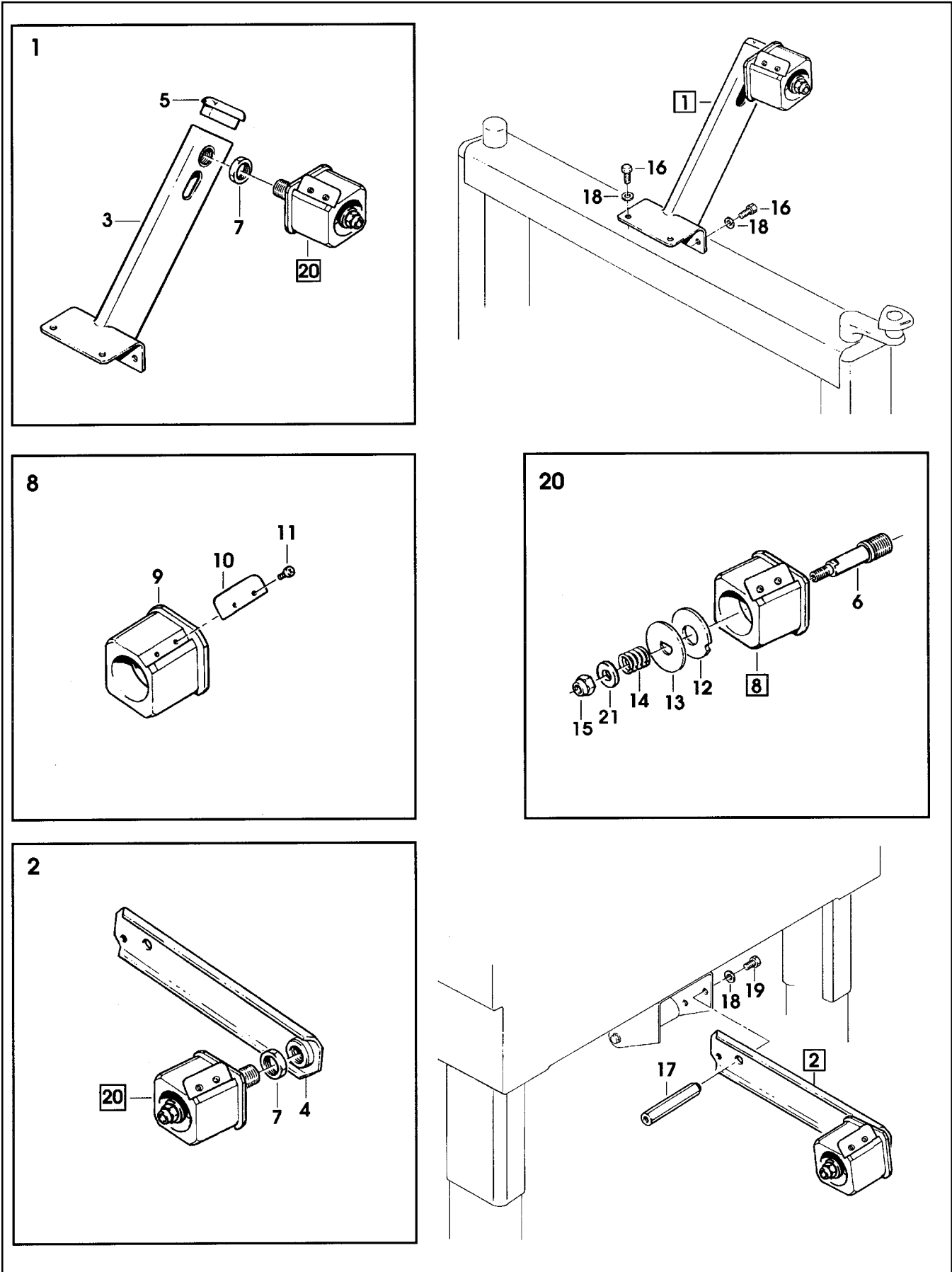


Figure 2807

Figure 2807

Ref. No.	3M Part No.	Description
2807-1	78-8076-4633-2	Tape Roll Bracket Assembly
2807-2	78-8070-1565-2	Tape Drum Bracket Assembly
2807-3	78-8070-1566-0	Bracket – Tape Drum
2807-4	78-8070-1395-4	Bracket – Bushing Assembly
2807-5	78-8070-1568-6	Cap – Bracket
2807-6	78-8076-4519-3	Shaft – Tape Drum
2807-7	78-8017-9169-6	Nut – M18 x 1
2807-8	78-8070-1569-4	Tape Drum Assembly – 2 Inch Wide
2807-9	78-8052-6749-5	Tape Drum
2807-10	78-8052-6268-6	Leaf Spring
2807-11	26-1002-5753-9	Screw – Self Tapping
2807-12	78-8060-8172-1	Washer – Friction
2807-13	78-8052-6271-0	Washer – Tape Drum
2807-14	78-8100-1048-4	Spring – Core Holder
2807-15	78-8017-9077-1	Nut – Self-Locking, M10 x 1
2807-16	78-8032-0375-7	Screw – Hex Hd M6 x 16
2807-17	78-8070-1215-4	Spacer – Stud
2807-18	26-1000-0010-3	Washer – Flat M6
2807-19	78-8010-7169-3	Screw – Hex Hd M6 x12
2807-20	78-8060-8474-1	Tape Drum Assembly – 2 Inch Head
2807-21	26-1004-5510-9	Washer – Plain, M10

700a Adjustable Case Sealer

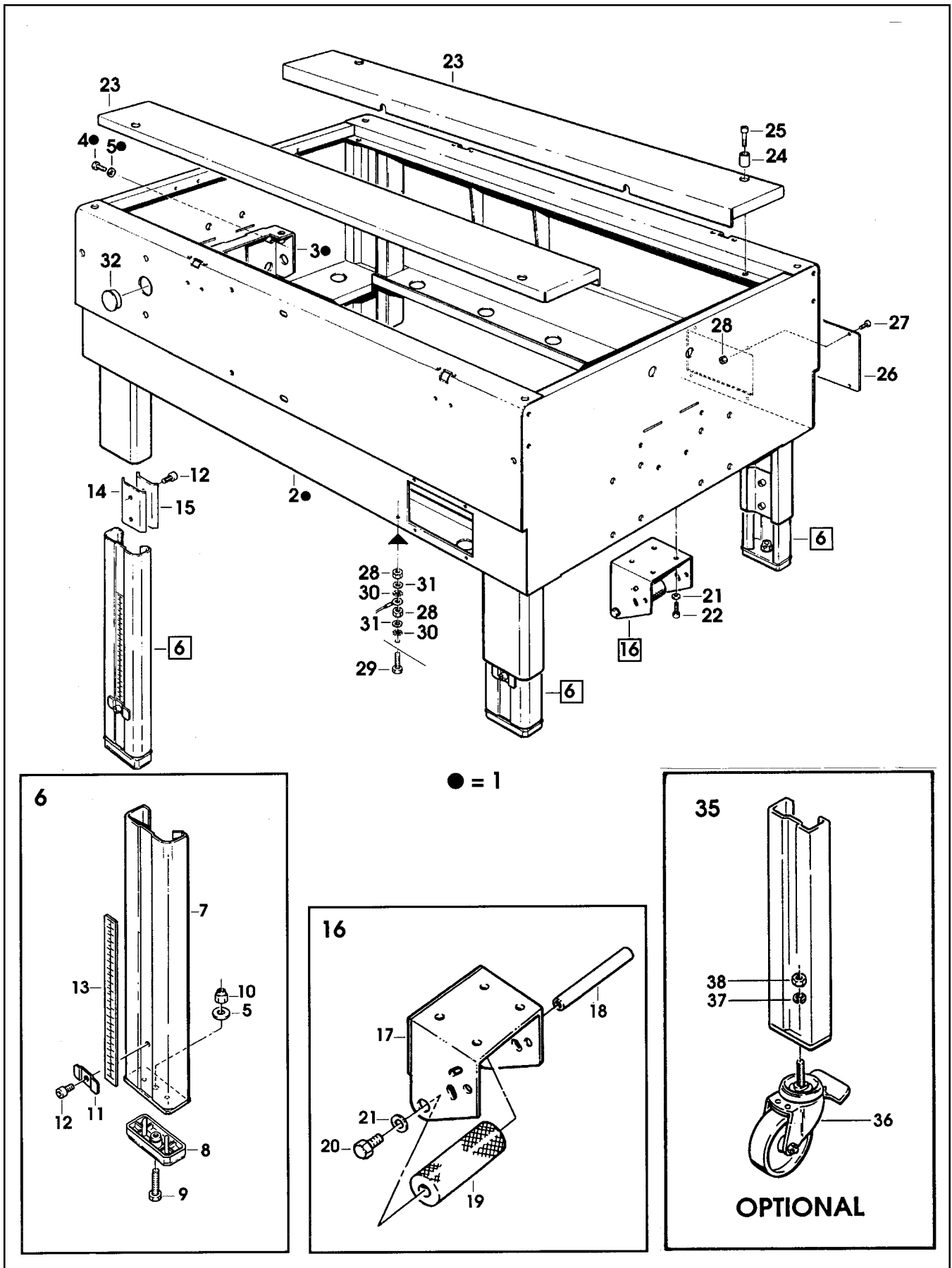


Figure 3433

Figure 3433

Ref. No.	3M Part No.	Description
3433-1	78-8091-0309-2	Conveyor Bed Assembly
3433-2	78-8091-0310-0	Bed – Conveyor
3433-3	78-8091-0307-6	Support – Drive
3433-4	26-1003-5842-8	Screw – Hex Hd M8 x 20
3433-5	78-8017-9318-9	Washer – Plain 8 mm
3433-6	78-8076-5381-7	Leg Assembly – Inner W/Stop
3433-7	78-8076-5382-5	Leg – Inner
3433-8	78-8060-8480-8	Pad – Foot
3433-9	78-8055-0867-4	Screw – Hex Hd M8 x 30
3433-10	78-8017-9313-0	Nut – Self Locking M8
3433-11	78-8076-5383-3	Stop – Leg
3433-12	26-1003-7963-0	Screw – Soc Hd M8 x 16
3433-13	78-8060-8481-6	Label – Height
3433-14	78-8052-6677-8	Clamp – Inner
3433-15	78-8052-6676-0	Clamp – Outer
3433-16	78-8076-5392-4	Support – Tape Drum
3433-17	78-8060-8483-2	Support – Outboard Roll
3433-18	78-8060-8484-0	Shaft – Roller
3433-19	78-8060-8485-7	Roller
3433-20	78-8032-0375-7	Screw – Hex Hd M6 x 16
3433-21	26-1000-0010-3	Washer – Flat M6
3433-22	26-1003-7957-2	Screw – Soc Hd M6 x 16
3433-23	78-8076-4620-9	Plane – Conveyor Bed
3433-24	78-8060-8486-5	Bushing
3433-25	78-8010-7211-3	Screw – Soc Hd M6 x 25
3433-26	78-8060-8487-3	Cover – Switch
3433-27	78-8060-8087-1	Screw – M5 x 10
3433-28	78-8010-7417-6	Nut – Hex M5
3433-29	78-8060-8488-1	Screw – Hex Hd M5 x 20
3433-30	78-8046-8217-3	Washer – Special
3433-31	78-8005-5741-1	Washer – Flat M5
3433-32	78-8076-4701-7	Cap – /28
3433-35	78-8098-9076-3	Caster Assembly
3433-36	26-1009-9096-4	Caster – Dual Locking
3433-37	26-1009-9094-9	Washer – Spring, Helical, M12
3433-38	26-1009-9095-6	Nut – M12

700a Adjustable Case Sealer

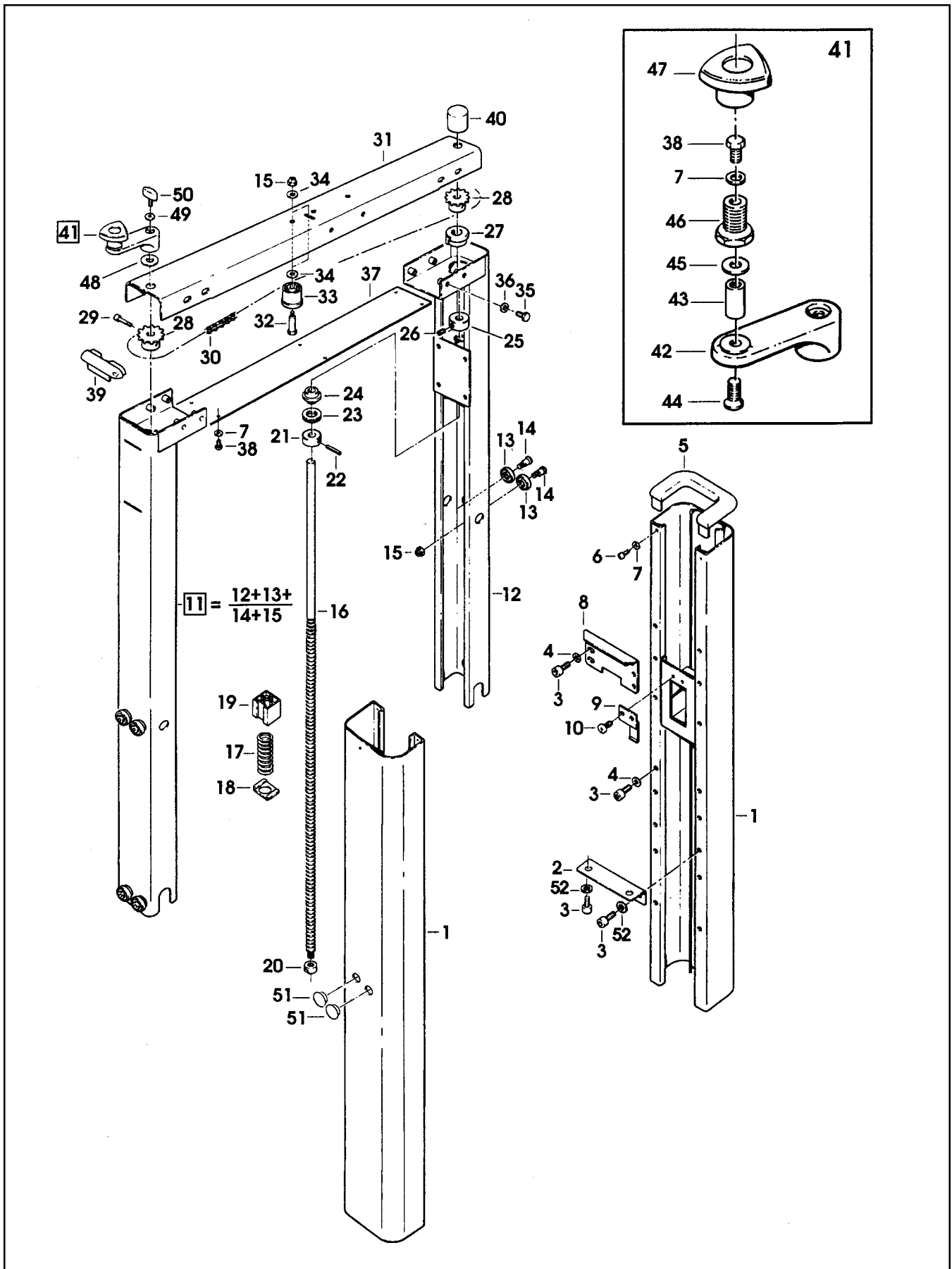


Figure 3434

Figure 3434

Ref. No.	3M Part No.	Description
3434-1	78-8060-8489-9	Column – Outer
3434-2	78-8060-8490-7	Plate – Column Mounting
3434-3	26-1003-7964-8	Screw – Soc Hd Hex Soc Dr, M8 x 20
3434-4	78-8017-9318-9	Washer – Plain 8 mm
3434-5	78-8060-8491-5	Cap – Column
3434-6	26-1002-4955-1	Screw – Self Tap 8P x 13
3434-7	78-8005-5740-3	Washer – Plain 4 mm
3434-8	78-8060-8492-3	Stop – Height
3434-9	78-8076-5482-3	Plate – Nut Stop
3434-10	78-8060-8087-1	Screw – M5 x 10
3434-11	78-8060-8494-9	Column Assembly – Inner
3434-12	78-8060-8495-6	Column – Inner
3434-13	78-8054-8617-8	Bearing – Special
3434-14	78-8054-8589-9	Screw – Special
3434-15	26-1003-6916-9	Nut – Locking, Plastic Insert M6
3434-16	78-8060-8496-4	Lead Screw
3434-17	78-8054-8997-4	Spring
3434-18	78-8054-8970-1	Bed Plate – Spring
3434-19	78-8054-8571-7	Nut – Plastic
3434-20	78-8054-8968-5	Nut – Special
3434-21	78-8054-8585-7	Collar
3434-22	78-8054-8586-5	Pin
3434-23	78-8054-8584-0	Spacer
3434-24	78-8054-8583-2	Bushing
3434-25	78-8060-8497-2	Bushing – Lead Screw
3434-26	78-8059-5617-0	Set Screw – M6 x 8
3434-27	78-8060-8498-0	Bushing – Inner Column
3434-28	78-8060-8499-8	Sprocket – 3/8" Z = 13
3434-29	26-1003-7946-5	Screw – Soc Hd M4 x 25
3434-30	78-8070-1501-7	Chain – 3/8" P = 156
3434-31	78-8113-6755-2	Housing – Chain, W/English Language Label
3434-32	78-8060-7878-4	Idler Screw
3434-33	78-8070-1503-3	Roller – Chain Tensioning
3434-34	78-8042-2919-9	Washer – Triple M6
3434-35	26-1003-5829-5	Screw – Hex Hd M6 x 12
3434-36	26-1000-0010-3	Washer – Flat M6
3434-37	78-8070-1504-1	Cover
3434-38	78-8010-7157-8	Screw – Hex Hd M4 x 10
3434-39	78-8070-1505-8	Cap – Inner Column
3434-40	78-8070-1506-6	Cover – Screw
3434-41	78-8076-4807-2	Crank Assembly
3434-42	78-8076-5422-9	Crank
3434-43	78-8070-1509-0	Shaft – Crank
3434-44	26-1005-5316-8	Screw – Flat Hd Hex Dr M5 x 16
3434-45	78-8070-1510-8	Washer – Nylon
3434-46	78-8070-1511-6	Bushing
3434-47	78-8070-1512-4	Knob – VTR-B-M12
3434-48	78-8076-4800-7	Washer – Crank
3434-49	78-8076-4809-8	Washer – Crank
3434-50	78-8076-4821-3	Key – Stop
3434-51	78-8054-8821-6	End Cap
3434-52	26-1004-5507-5	Washer – M8

700a Adjustable Case Sealer

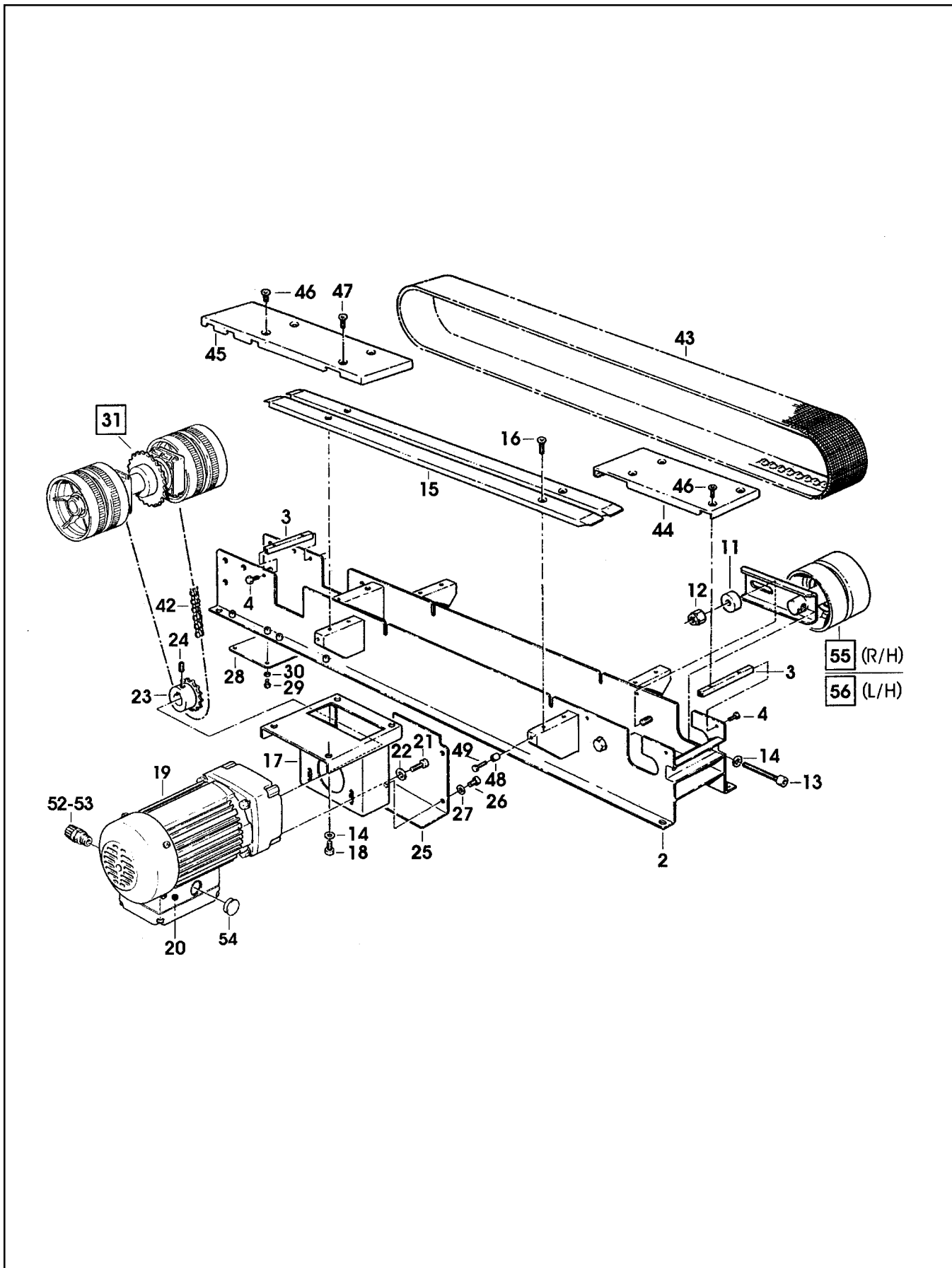


Figure 5667/1 of 2

Figure 5667 (Page 1 of 2)

Ref. No.	3M Part No.	Description
5667-1	78-8100-1128-4	Drive Assembly – BTM, W /O Motor
5667-2	78-8070-1580-1	Frame – Drive
5667-3	78-8070-1514-0	Spacer
5667-4	26-1003-5829-5	Screw – Hex Hd, M6 x 12
5667-7	78-8052-6710-7	Roller – Idler
5667-8	78-8052-6709-9	Washer – Special
5667-9	78-8010-7435-8	Washer – Lock M6
5667-10	26-1003-7957-2	Screw – Soc Hd M6 x 16
5667-11	78-8070-1518-1	Spacer – Shaft
5667-12	26-1003-6918-5	Nut – Hex Plastic Insert M10
5667-13	78-8070-1519-9	Screw – Soc Hd, Hex Hd, M8 x 70
5667-14	78-8017-9318-9	Washer – Plain, 8 mm
5667-15	78-8070-1520-7	Guide – Drive Belt
5667-16	26-1005-4757-4	Screw – Flat Hd, Soc Dr, M x 20
5667-17	78-8070-1521-5	Support – Gearbox
5667-18	26-1003-7964-8	Screw – Soc Hd, Hex Soc Dr, M8 x 20
5667-19	78-8070-1522-3	Gearmotor – 115V, 60HZ
5667-20	78-8076-4515-1	Capacitor – 115V Gearmotor
5667-21	78-8070-1523-1	Screw – 1/4-28 x 1/2 SHCS
5667-22	78-8042-2919-9	Washer – Triple
5667-23	78-8070-1524-9	Sprocket – 3/8 ", Z=17
5667-24	78-8023-2479-4	Screw – Set W/End Cup,M6 x 10
5667-25	78-8070-1526-4	Cover – Chain
5667-26	78-8010-7209-7	Screw – Soc Hd, M6 x 12
5667-27	26-1000-0010-3	Washer – Flat M6

700a Adjustable Case Sealer

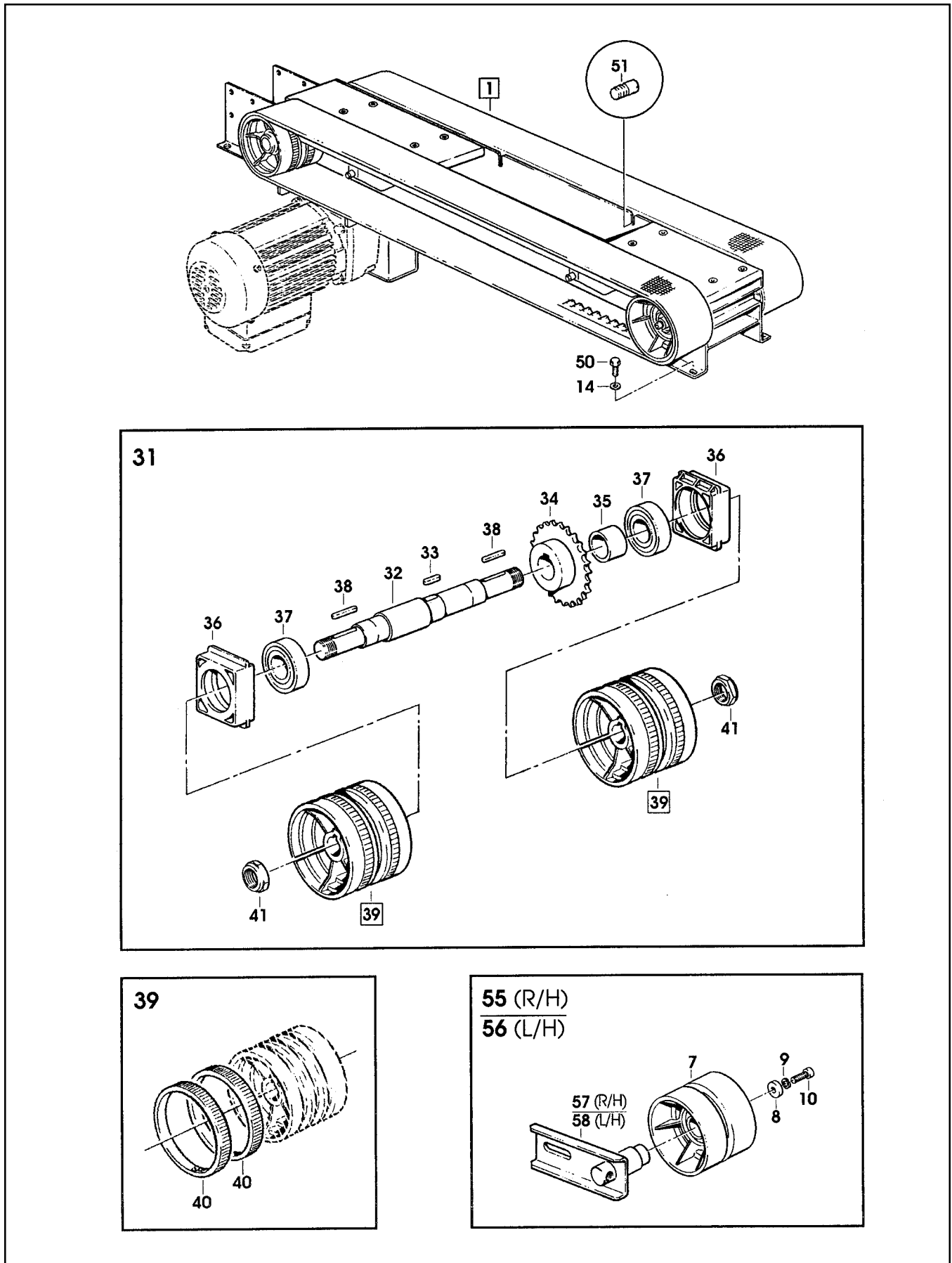


Figure 5667/2 of 2

Figure 5667 (Page 2 of 2)

Ref. No.	3M Part No.	Description
5667-28	78-8076-4562-3	Cover – Bottom
5667-29	26-1003-5820-4	Screw – Hex Hd, M5 x 12
5667-30	78-8005-5741-1	Washer – Flat, M5
5667-31	78-8070-1527-2	Shaft – With Drive Pulleys
5667-32	78-8070-1528-0	Shaft – Gearbox
5667-33	78-8057-5811-3	Key – 6 x 6 x 20 mm
5667-34	78-8054-8986-7	Sprocket – 3/8" Pitch 28 Teeth
5667-35	78-8054-8984-2	Bushing
5667-36	78-8070-1529-8	Support – Shaft
5667-37	78-8070-1530-6	Bearing – 6205-2RS
5667-38	78-8057-5739-6	Key – M5 x 5 x 30 mm
5667-39	78-8076-5105-0	Pulley Assembly – Drive
5667-40	78-8052-6713-1	Ring – Polyurethane
5667-41	78-8060-8416-2	Nut – Special M20 x 1
5667-42	78-8070-1525-6	Chain – 3/8" P=54
5667-43	78-8070-1531-4	Belt – Drive With Hook
5667-44	78-8070-1584-3	Cover – Drive, Front
5667-45	78-8113-6794-1	Cover – Drive, Rear, W/English Language Label
5667-46	26-0001-5862-1	Screw – Flat Hd Soc, M5 x 12
5667-47	26-1005-5316-8	Screw – Flat Hd, Hex Dr, M5 x 16
5667-48	78-8070-1534-8	Stud – Side Plate
5667-49	78-8060-8488-1	Screw – Hex Hd, M5 x 20
5667-50	26-1003-5841-0	Screw – M8 x 16
5667-51	78-8076-4500-3	Stud – Mounting
5667-52	78-8076-4715-7	Cord Grip
5667-53	78-8076-5211-6	Set Nut – GMP 113.5
5667-54	78-8060-7885-9	End Cap – /25 x 1,2
5667-55	78-8100-1236-5	Belt Tensioning Assembly – R/H
5667-56	78-8100-1237-3	Belt Tensioning Assembly – L/H
5667-57	78-8100-1238-1	Belt Tensioning – R/H
5667-58	78-8100-1239-9	Belt Tensioning – L/H

700a Adjustable Case Sealer

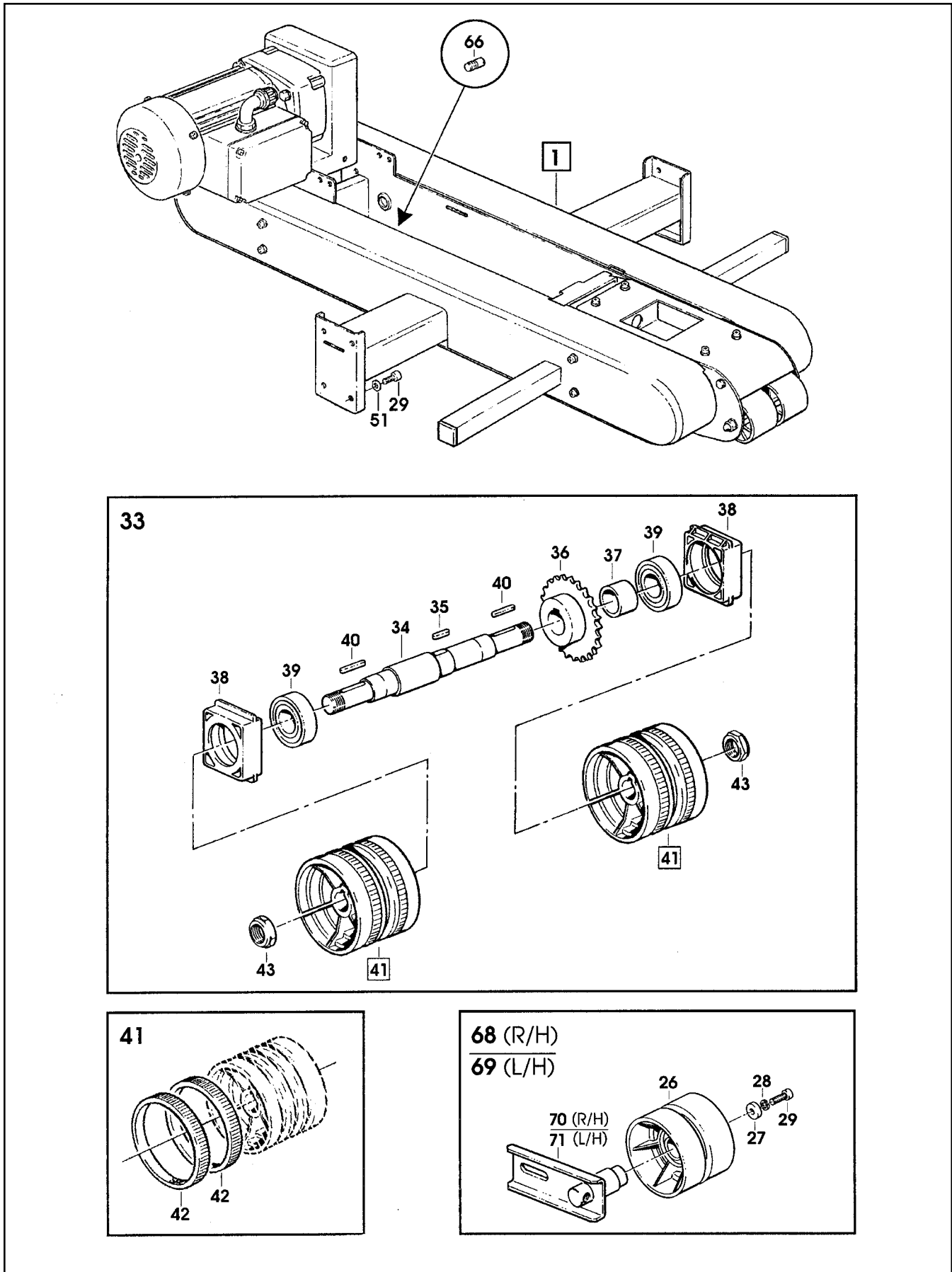


Figure 5668/1 of 2

Figure 5668 (Page 1 of 2)

Ref. No.	3M Part No.	Description
5668-1	78-8100-1129-2	Upper Drive Assembly – W /O Motor
5668-2	78-8070-1588-4	Frame – Drive, Upper
5668-3	78-8070-1520-7	Guide – Drive Belt
5668-4	26-1005-4757-4	Screw – Flat Hd M5 x 20
5668-5	78-8070-1589-2	Clamp – Upper Head
5668-6	78-8070-1590-0	Shaft – Roller
5668-7	26-1003-7948-1	Screw – Soc Hd M5 x 10
5668-8	78-8070-1514-0	Spacer
5668-9	78-8010-7169-3	Screw – Hex Hd M6 x 12
5668-10	26-1000-0010-3	Washer – Flat M6
5668-11	78-8100-1130-0	Tube – Roller
5668-12	78-8052-6641-4	Roller
5668-13	78-8070-1592-6	Spacer – Roller
5668-14	78-8100-1131-8	Shaft – Roller
5668-15	78-8100-1132-6	Nut – Special, M8
5668-16	78-8017-9318-9	Washer – Plain 8 mm
5668-17	78-8060-7693-7	Roller – 32 x 38
5668-18	78-8070-1593-4	Spacer – Roller
5668-19	26-1003-5820-4	Screw – Hex Hd, M5 x 12
5668-20	78-8005-5741-1	Washer – Flat, M5
5668-21	78-8070-1599-1	Tube – Compression Roller
5668-22	78-8052-6652-1	Cap – End
5668-23	26-1003-5841-0	Screw – M8 x 16
5668-26	78-8052-6710-7	Roller – Idler
5668-27	78-8052-6709-9	Washer – Special
5668-28	78-8010-7435-8	Washer – Lock M6
5668-29	26-1003-7957-2	Screw – Soc Hd M6 x 16
5668-30	78-8070-1518-1	Spacer – Shaft
5668-31	26-1003-6918-5	Nut – Hex Plastic Insert M10
5668-32	78-8070-1594-2	Screw – Hex Hd M8 x 60
5668-33	78-8070-1527-2	Shaft – With Drive Pulleys
5668-34	78-8070-1528-0	Shaft – Gearbox

700a Adjustable Case Sealer

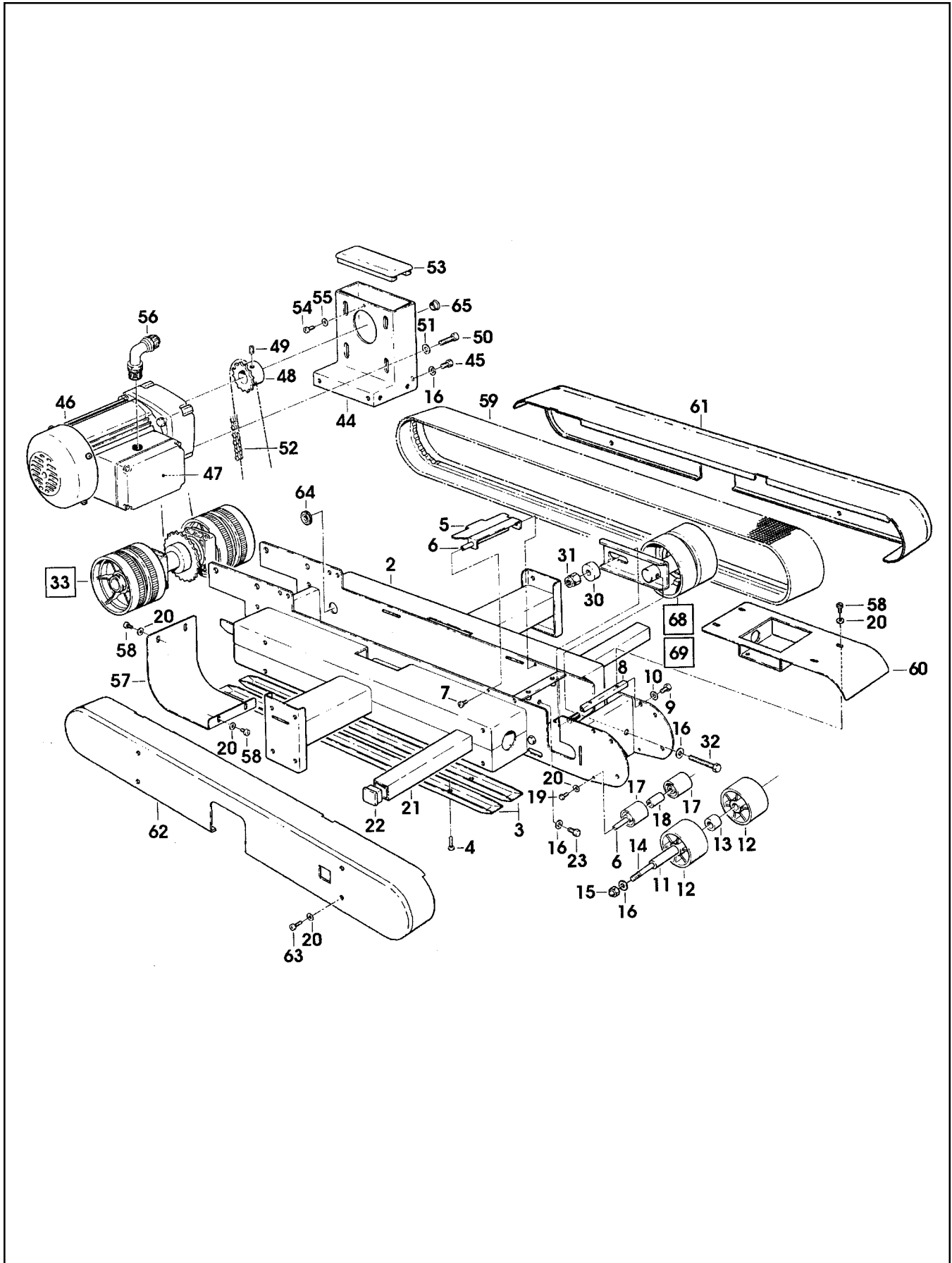


Figure 5668/2 of 2

Figure 5668 (Page 2 of 2)

Ref. No.	3M Part No.	Description
5668-35	78-8057-5811-3	Key – 6 x 6 x 20 mm
5668-36	78-8054-8986-7	Sprocket – 3/8" Pitch 28 Teeth
5668-37	78-8054-8984-2	Bushing
5668-38	78-8070-1529-8	Support – Shaft
5668-39	78-8070-1530-6	Bearing – 6205-2RS
5668-40	78-8057-5739-6	Key – M5 x 5 x 30 mm
5668-41	78-8076-5105-0	Pulley Assembly – Drive
5668-42	78-8052-6713-1	Ring – Polyurethane
5668-43	78-8060-8416-2	Nut – Special, M20 x 1
5668-44	78-8070-1595-9	Support – Drive
5668-45	26-1003-5842-8	Screw – Hex Hd, M8 x 20
5668-46	78-8070-1522-3	Gearmotor – 115V, 60HZ
5668-47	26-1011-8828-7	Capacitor – 115V Gearmotor
5668-48	78-8070-1524-9	Sprocket – 3/8" Z=17
5668-49	78-8023-2479-4	Set Screw – W/End Cup M6 x 10
5668-50	78-8070-1523-1	Screw – 1/4-28 x 1/2 SHCS
5668-51	78-8042-2919-9	Washer – Triple, M6
5668-52	78-8070-1597-5	Chain – 3/8" P=62
5668-53	78-8070-1598-3	Cover
5668-54	26-1002-4955-1	Screw – Self Tap 8P x 13
5668-55	78-8005-5740-3	Washer – Plain 4 mm
5668-56	78-8070-1596-7	Union – Elbow, PG 13,5
5668-57	78-8076-4622-5	Cover – Rear Upper
5668-58	78-8060-8087-1	Screw – M5 x 10
5668-59	78-8070-1531-4	Belt – Drive, With Hook
5668-60	78-8113-6791-7	Cover – Upper, Front, W/English Language Label
5668-61	78-8113-6790-9	Guard – Belt, R/H, W/English Language Label
5668-62	78-8113-6789-1	Guard – Belt, L/H, W/English Language Label
5668-63	78-8076-4625-8	Screw – Special, M5 x 16
5668-64	78-8076-4702-5	Grommet – /28
5668-65	78-8054-8821-6	End – Cap
5668-66	78-8076-4500-3	Stud – Mounting
5668-67	78-8100-1042-7	Washer – /15 x 6.35 x 2
5668-68	78-8100-1236-5	Belt Tensioning Assembly – R/H
5668-69	78-8100-1237-3	Belt Tensioning Assembly – L/H
5668-70	78-8100-1238-1	Belt Tensioning – R/H
5668-71	78-8100-1239-9	Belt Tensioning – L/H

700a Adjustable Case Sealer

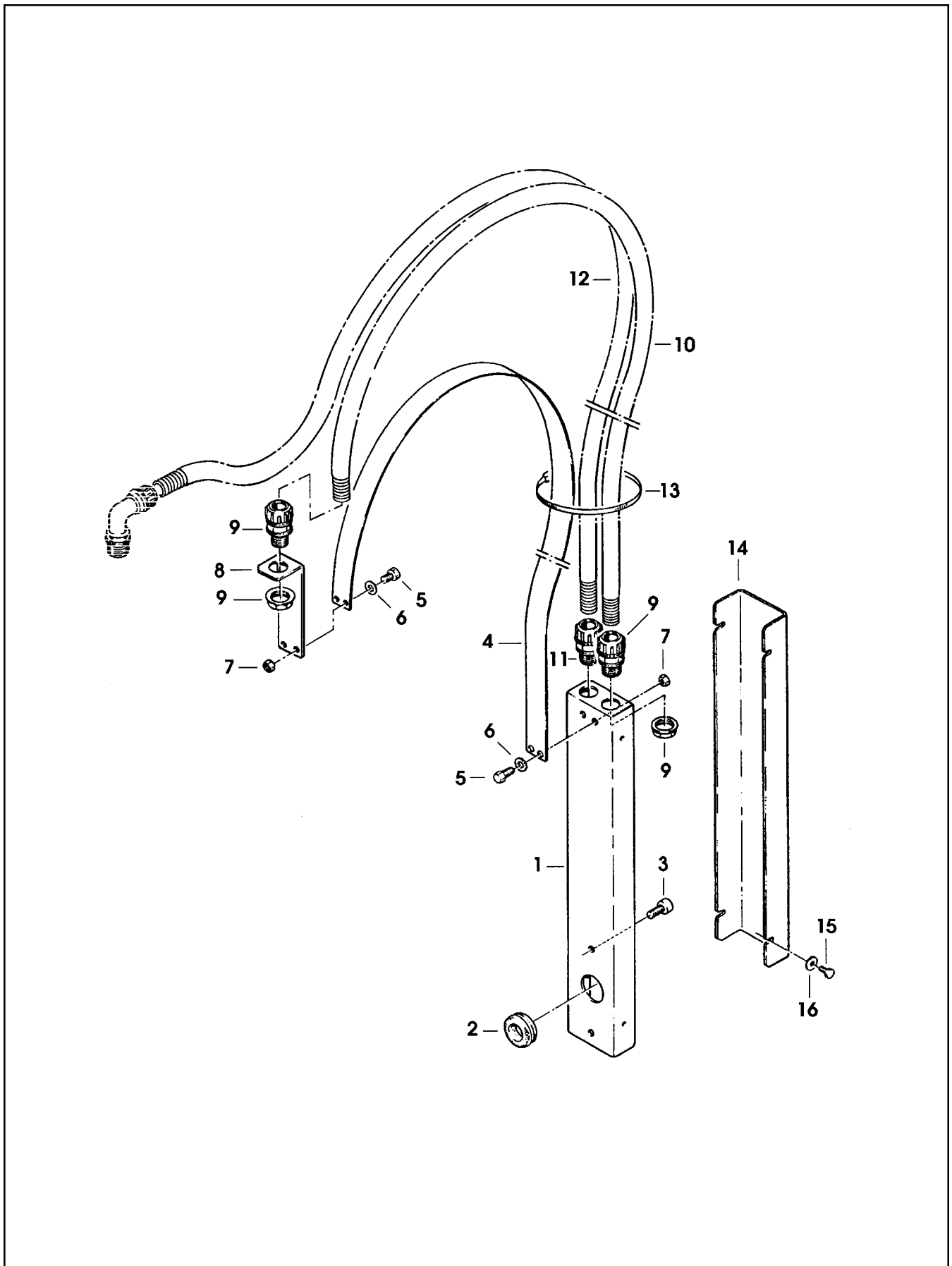


Figure 5669

Figure 5669

Ref. No.	3M Part No.	Description
5669-1	78-8091-0660-8	Housing – Wire
5669-2	78-8076-4702-5	Grommet – /28
5669-3	26-1003-7963-0	Screw – Soc Hd M8 x 16
5669-4	78-8076-4636-5	Strap – Wire
5669-5	78-8010-7163-6	Screw – Hex Hd M5 x 10
5669-6	78-8005-5741-1	Washer – Plain M5
5669-7	78-8010-7417-6	Nut – Hex M5
5669-8	78-8100-1135-9	Bracket – Strap
5669-9	78-8076-4520-1	Union PG13 – Sleeve /16
5669-10	78-8076-4521-9	Sleeving – Wire, 900 mm /16
5669-11	78-8076-4638-1	Union PG 13.5 – Sleeve /14
5669-12	78-8076-4640-7	Sleeving – Wire, 11 mm /14
5669-13	78-8060-8029-3	Clamp – 140 x 3,5
5669-13	78-8076-4641-5	Cover
5669-14	78-8010-7157-8	Screw – Hex Hd M4 x 10
5669-15	78-8017-9018-5	Washer – Plain M4

700a Adjustable Case Sealer

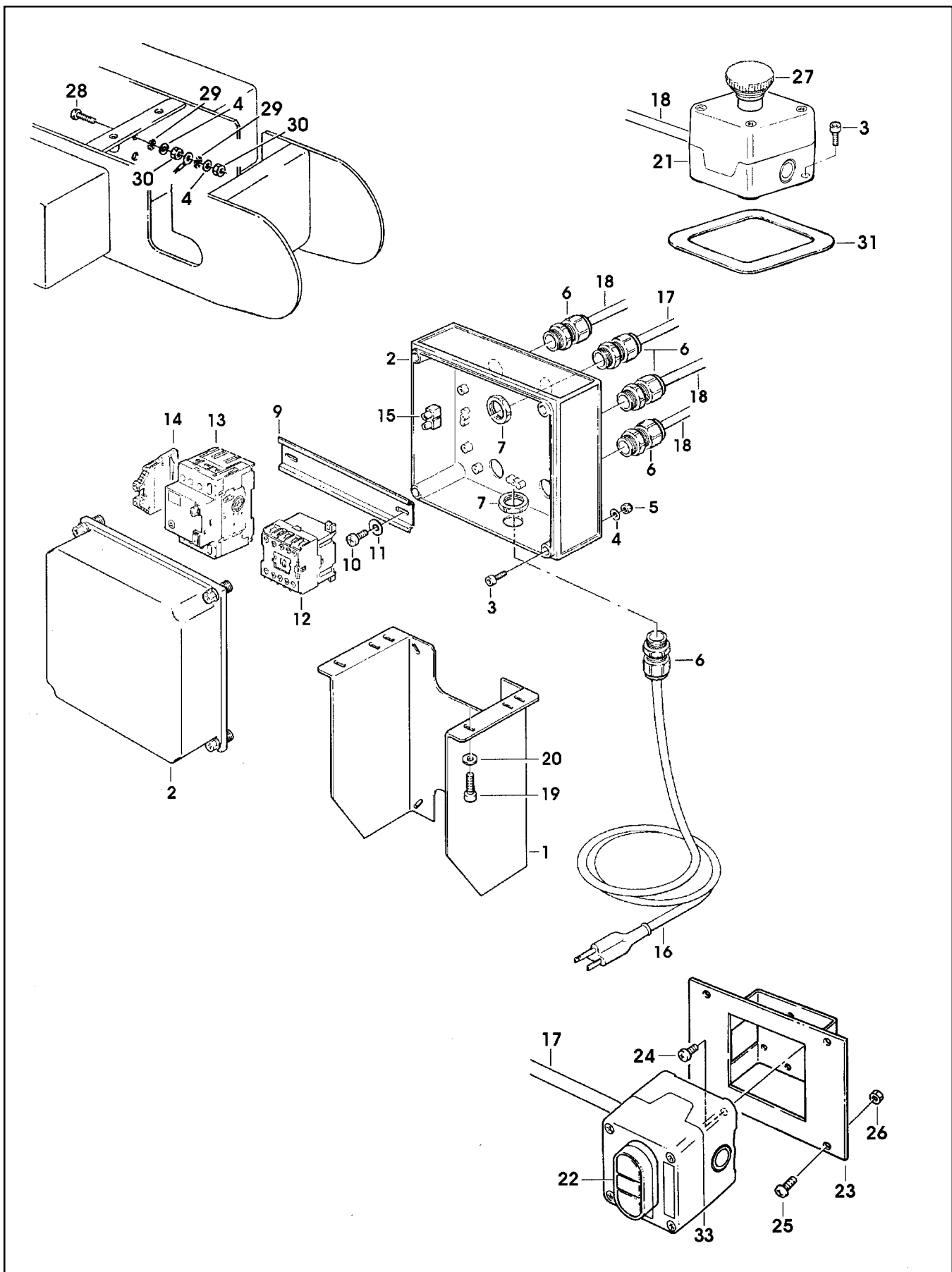
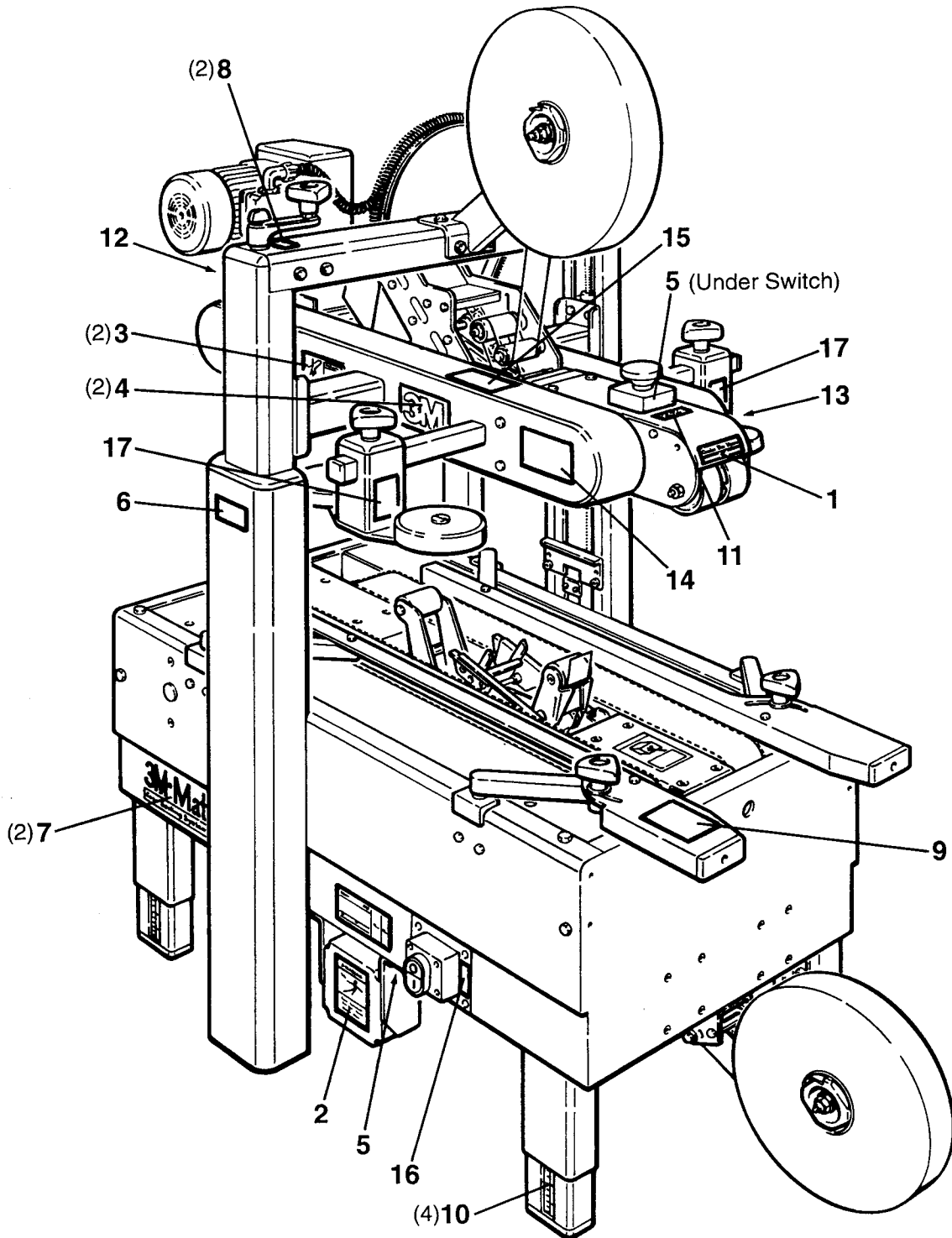


Figure 5670

Figure 5670

Ref. No.	3M Part No.	Description
5670-1	78-8094-6379-3	Support – Box
5670-2	78-8113-6759-4	Box – W/English Language Label
5670-3	78-8094-6381-9	Screw – Soc Hd, Hex Hd, M4 x 15
5670-4	78-8005-5740-3	Washer – Plain, 4 mm
5670-5	26-1003-6914-4	Nut – Plastic Insert, M4
5670-6	78-8076-4715-7	Cord Grip
5670-7	78-8076-5211-6	Set Nut – GMP 13.5
5670-9	78-8094-6382-7	Guide – Mounting
5670-10	78-8028-8208-0	Screw – 6P x 9,5
5670-11	78-8017-9018-5	Washer – Plain, M4
5670-12	78-8094-6383-5	Contactactor – CA4-5-10, 110V, 60HZ
5670-13	78-8076-5378-3	Circuit Breaker, KTA-3-25
5670-14	78-8094-6384-3	Ground Clamp – VGPE 4/6
5670-15	78-8076-4968-2	Terminal
5670-16	78-8028-7909-4	Power Cord – U.S.A.
5670-17	78-8100-1038-5	Cable – 3 x 20 AWG, 5 MT
5670-18	78-8060-8053-3	Wire – 3-Pole, 5 Meters Length
5670-19	26-1003-7957-2	Screw – Soc Hex Hd, M6 x 16
5670-20	26-1000-0010-3	Washer – Flat, M6
5670-21	78-8076-5194-4	Box – E-Stop, Yellow
5670-22	78-8094-6386-8	Switch – On/Off, DM3N-C-01/10
5670-23	78-8100-1039-3	Support – On/Off Switch
5670-24	78-8017-9257-9	Screw – Phillis Head, M4 x 10
5670-25	78-8060-8087-1	Screw – M5 x 10
5670-26	78-8010-7417-6	Nut – Hex, M5
5670-27	26-1014-5845-8	E-Stop – 800EM-MTS644-3LX01
5670-28	78-8091-0538-6	Screw – Hex Hd, M4 x 25
5670-29	78-8076-4716-5	Star Washer – M4
5670-30	78-8010-7416-8	Nut – Hex, M4
5670-31	78-8100-1234-0	Collar
5670-33	78-8114-4896-4	Box – On/Off, Grey

700a Adjustable Case Sealer



Safety and Information Labels

A label kit, part number 78-8098-9175-3, is available as a stock item. It contains all the safety and information labels used on the case sealer, or labels can be ordered separately from the following list.

Ref. No.	3M Part No.	Description	Qty.
1	78-8070-1318-6	Label – Box Centering	1
2	78-8070-1329-3	Label – Warning	1
3	78-8070-1336-8	Label – Warning	2
4	78-8070-1339-2	Information – 3M Logo	2
5	78-8069-3852-6	Label – Ground	2
6	78-8068-3859-1	Label – Service and Spares	1
7	78-8062-4266-1	Label – Product	1
8	78-8070-1628-8	Label – Up and Down/Lock	2
9	78-8070-1366-5	Label – Safety Instructions	1
10	78-8060-8481-6	Label – Leg	4
11	78-8095-1141-9	Label – Stop	1
12	78-8113-6717-2	Label – Caution	1
13	78-8113-6768-5	Label – Caution, R/H	1
14	78-8113-6769-3	Label – Caution, L/H	1
15	78-8113-6770-1	Label – Notice	1
16	78-8113-6775-0	Label – Electrical On/Off	1
17	78-8113-6912-9	Label – Caution, Pinch Point	2