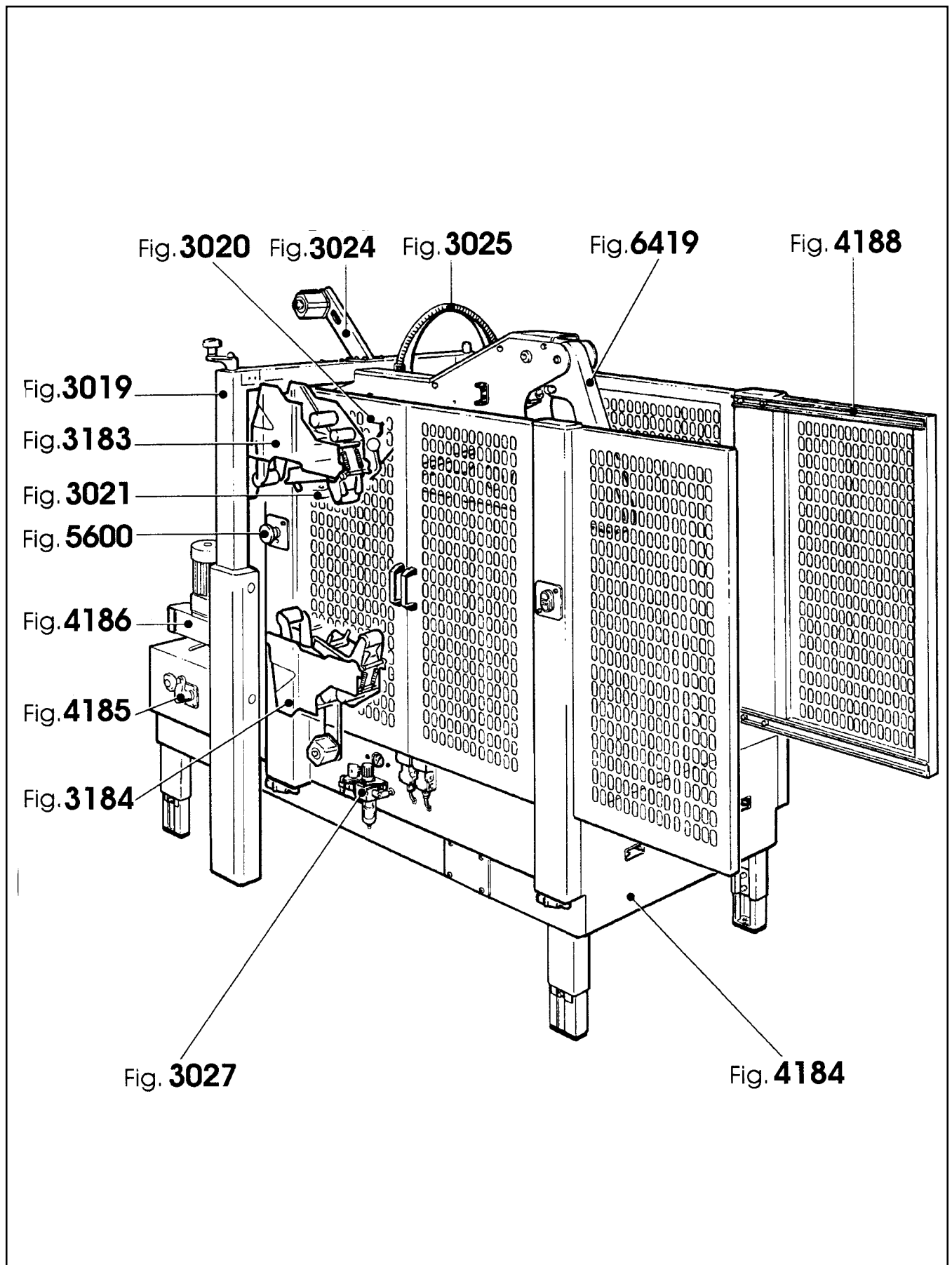


800af3 Adjustable Case Sealer



Frame Assemblies

800af3 Adjustable Case Sealer

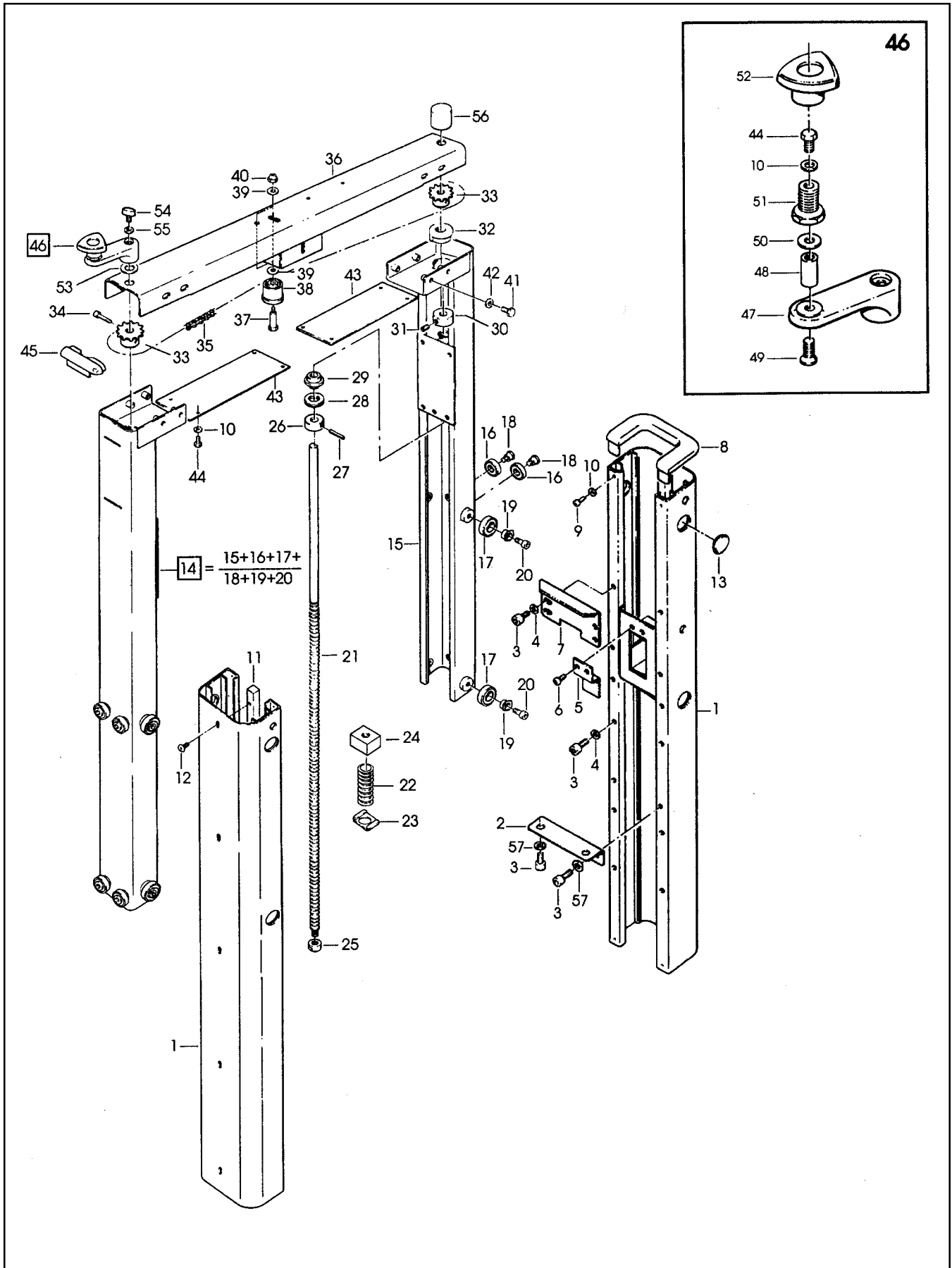


Figure 3019

Figure 3019

Ref. No.	3M Part No.	Description
3019-1	78-8076-4810-6	Column – Outer
3019-2	78-8060-8490-7	Plate – Column Mounting
3019-3	26-1003-7963-0	Screw – Soc Hd, M8 x 16
3019-4	78-8017-9318-9	Washer – Plain 8 mm
3019-5	78-8060-8493-1	Plate – Nut Stop
3019-6	78-8060-8087-1	Screw – M5 x 10
3019-7	78-8060-8492-3	Stop – Height
3019-8	78-8060-8491-5	Cap – Column
3019-9	26-1002-4955-1	Screw – Self Tap 8P x 13
3019-10	78-8005-5740-3	Washer – Plain 4 mm
3019-11	78-8076-4811-4	Guide – Outer Column
3019-12	78-8076-4503-7	Screw – M6 x 12
3019-13	78-8076-4812-2	Plug – Outer Column
3019-14	78-8076-4813-0	Column Assembly – Inner
3019-15	78-8076-4814-8	Column – Inner
3019-16	78-8059-5625-3	Bearing
3019-17	26-1000-4350-9	Bearing – 6002-2RS
3019-18	78-8076-4815-5	Screw – Bearing
3019-19	78-8076-4816-3	Bushing – Eccentric
3019-20	26-1003-7957-2	Screw – Soc Hd Hex Hd, M6 x 16
3019-21	78-8076-4817-1	Lead Screw
3019-22	78-8054-8997-4	Spring
3019-23	78-8054-8970-1	Bed Plate For Spring
3019-24	78-8091-0551-9	Nut – Lead Screw
3019-25	78-8054-8968-5	Special Nut
3019-26	78-8054-8585-7	Collar
3019-27	78-8054-8586-5	Pin
3019-28	78-8054-8584-0	Spacer
3019-29	78-8054-8583-2	Bushing
3019-30	78-8060-8497-2	Bushing – Lead Screw
3019-31	78-8059-5617-0	Set Screw – M6 x 8
3019-32	78-8060-8498-0	Bushing – Inner Column
3019-33	78-8060-8499-8	Sprocket – 3/8 Inch Z=13
3019-34	26-1003-7946-5	Screw – Soc Hd, M4 x 25
3019-35	78-8076-4818-9	Chain – 3/8 Inch Pitch 197 Pitch
3019-36	78-8076-4819-7	Crossmember – Chain
3019-37	78-8060-7878-4	Idler Screw
3019-38	78-8070-1503-3	Roller – Chain Tensioning
3019-39	78-8042-2919-9	Washer – Triple, M6
3019-40	26-1003-6916-9	Nut – Locking Plastic Insert M6
3019-41	26-1003-5829-5	Screw – Hex Hd. M6 x 12
3019-42	26-1000-0010-3	Washer – Flat M6
3019-43	78-8076-4820-5	Cover – Chain
3019-44	78-8010-7157-8	Screw – Hex Hd, M4 x 10
3019-45	78-8070-1505-8	Cap – Inner Column
3019-46	78-8076-4807-2	Crank Assembly
3019-47	78-8076-5422-9	Crank
3019-48	78-8070-1509-0	Shaft – Crank
3019-49	26-1005-5316-8	Screw – Flat Hd Hex Dr, M5 x 16
3019-50	78-8070-1510-8	Washer – Nylon, / 7 x 15 x 1
3019-51	78-8070-1511-6	Bushing
3019-52	78-8070-1512-4	Knob – VTR-B-M12
3019-53	78-8076-4800-7	Washer – Crank
3019-54	78-8076-4821-3	Key – Stop
3019-55	78-8076-4809-8	Washer – Crank
3019-56	78-8070-1506-6	Cover – Screw
3019-57	26-1004-5507-5	Washer – M8

800af3 Adjustable Case Sealer

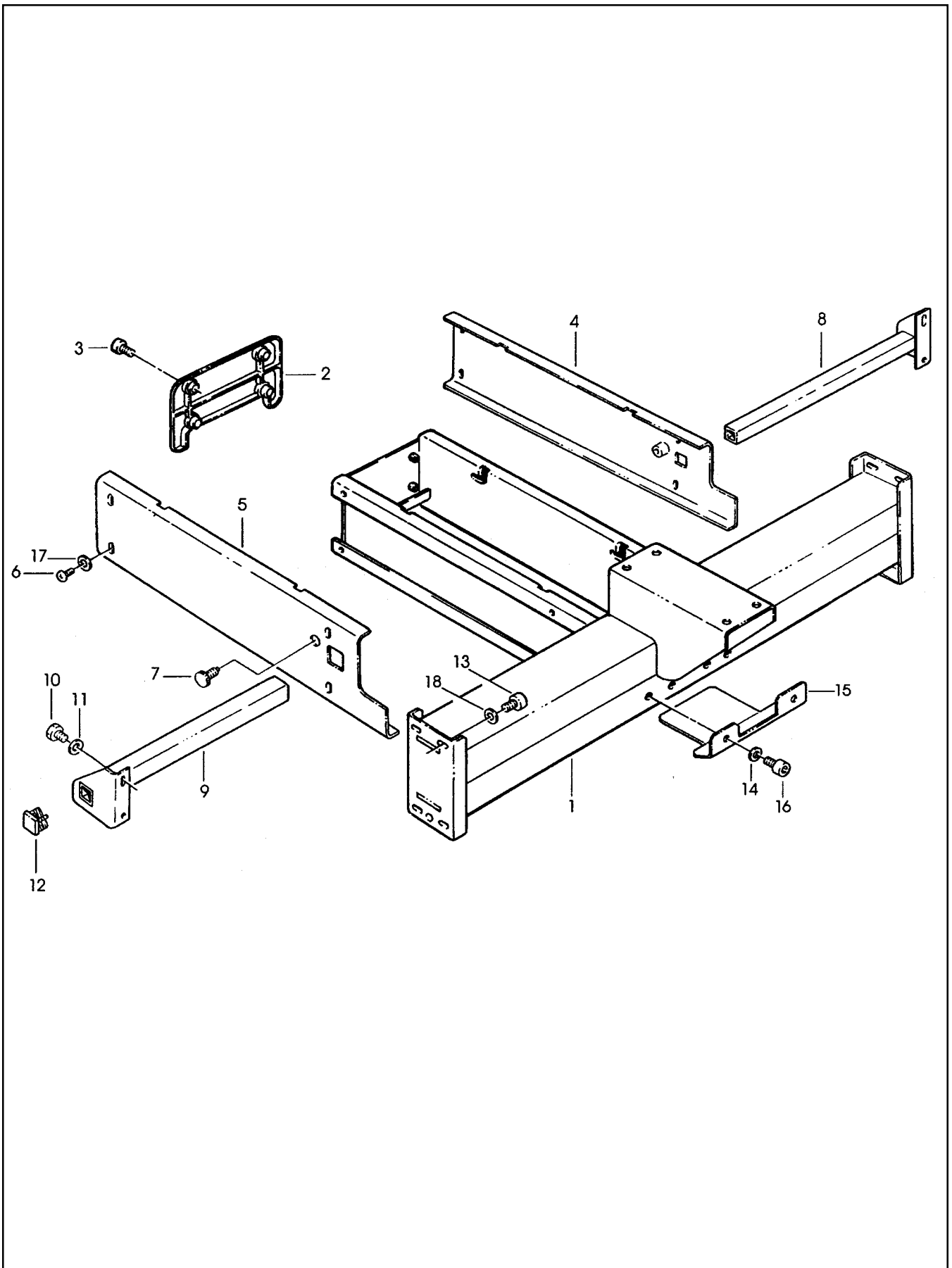


Figure 3020

Figure 3020

Ref. No.	3M Part No.	Description
3020-1	78-8076-4822-1	Support – Upper Head
3020-2	78-8076-4823-9	Cover – Rear
3020-3	26-1003-7951-5	Screw – Soc Hd Hex Soc, M5 x 20
3020-4	78-8113-6898-0	Frame Assembly – Upper, R/H (W/English Language Label)
3020-5	78-8113-6897-2	Frame Assembly – Upper, L/H (W/English Language Label)
3020-6	78-8060-8087-1	Screw – M5 x 10
3020-7	78-8070-1555-3	Block – Upper Head
3020-8	78-8076-4826-2	Support – Right Roller
3020-9	78-8076-4827-0	Support – Left Roller
3020-10	78-8032-0375-7	Screw – Hex Hd, M6 x 16
3020-11	78-8042-2919-9	Washer – Triple, M6
3020-12	78-8052-6652-1	Cap – End
3020-13	26-1003-7964-8	Screw – Soc Hd Hex Soc Dr, M8 x 20
3020-14	78-8017-9318-9	Washer – Plain 8 mm
3020-15	78-8114-4786-7	Slide
3020-16	26-1003-7963-0	Screw – Soc Hd, M8 x 16
3020-17	78-8100-1036-9	Washer

800af3 Adjustable Case Sealer

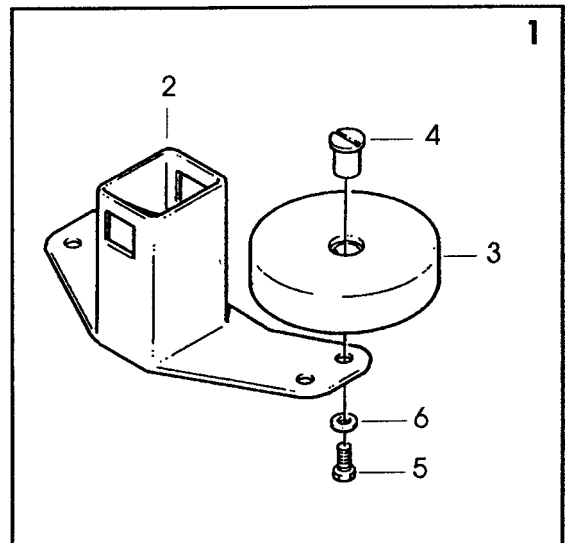
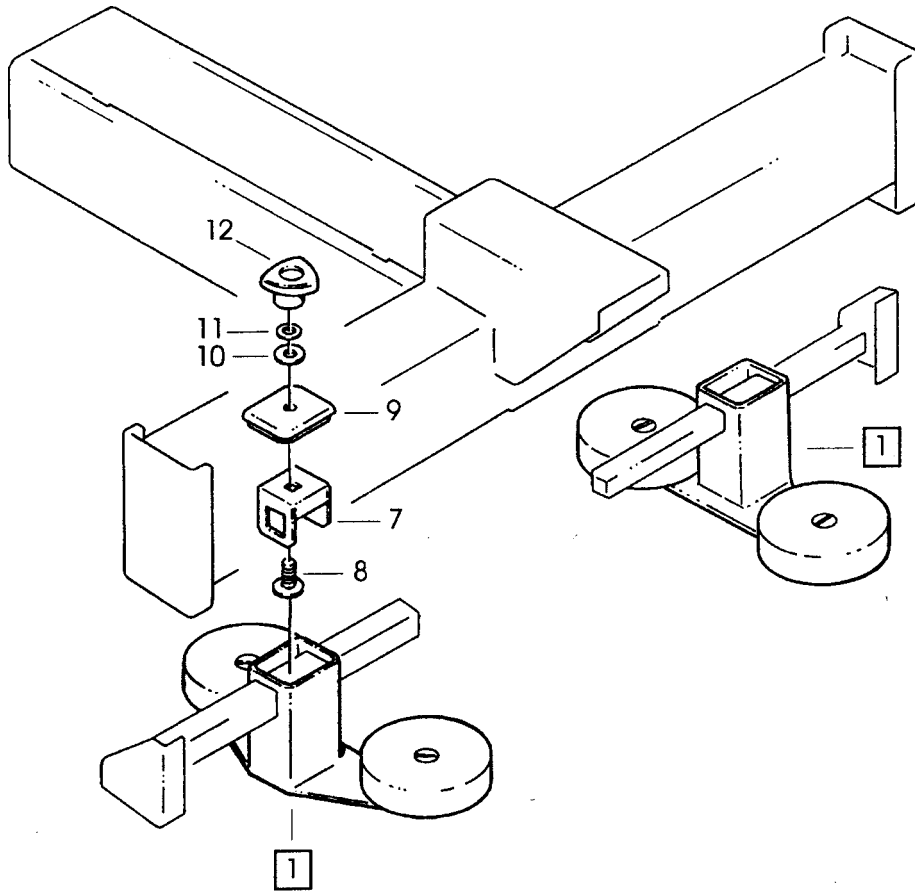


Figure 3021

Figure 3021

Ref. No.	3M Part No.	Description
3021-1	78-8100-0863-7	Compression Roller Assembly
3021-2	78-8113-6899-8	Compression Roller Support Assembly (W/English Language Label)
3021-3	78-8076-4628-2	Roller – Compression
3021-4	78-8076-4629-0	Shaft – Roller
3021-5	26-1003-5841-0	Screw – M8 x 16
3021-6	78-8017-9318-9	Washer – Plain 8 mm
3021-7	78-8076-4630-8	Plate – Tube, Roller
3021-8	78-8076-4631-6	Screw – M10 x 35
3021-9	78-8076-4632-4	Cap – Support
3021-10	78-8017-9074-8	Washer – Nylon 15 mm
3021-11	78-8052-6566-3	Washer – Friction
3021-12	78-8070-1549-6	Knob – VTR-B-M10

800af3 Adjustable Case Sealer

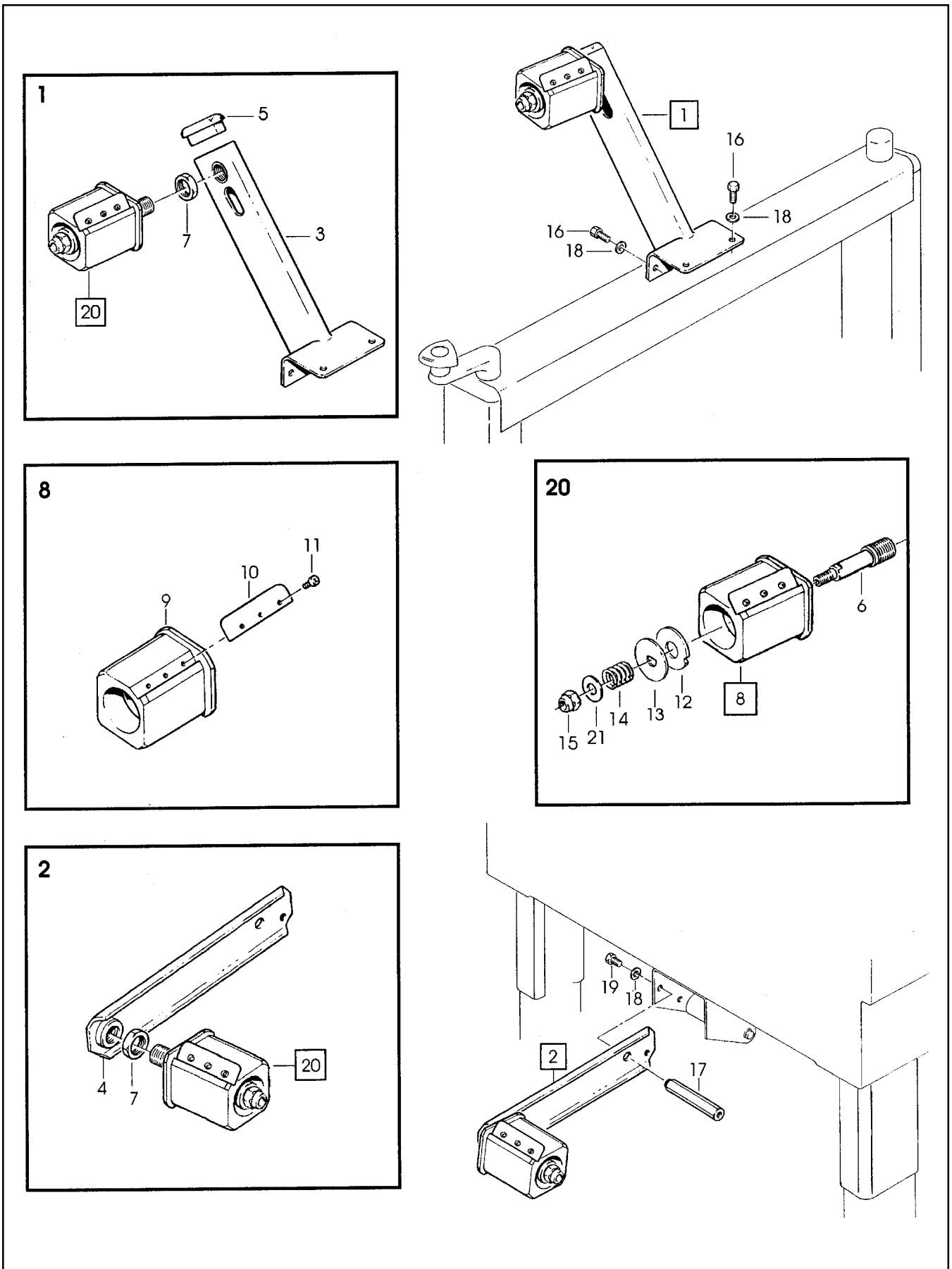


Figure 3024

Figure 3024

Ref. No.	3M Part No.	Description
3024-1	78-8076-4934-4	Tape Drum Bracket Assembly
3024-2	78-8076-4935-1	Tape Drum Bracket Assembly
3024-3	78-8070-1566-0	Bracket – Tape Drum
3024-4	78-8070-1395-4	Bracket – Bushing Assembly
3024-5	78-8070-1568-6	Cap – Bracket
3024-6	78-8060-8462-6	Shaft – Tape Drum
3024-7	78-8017-9169-6	Nut – M18 x 1
3024-8	78-8076-4731-4	Tape Drum Assembly
3024-9	78-8054-8815-8	Tape Drum
3024-10	78-8054-8816-6	Leaf Spring
3024-11	26-1002-5753-9	Screw – Self-Tapping
3024-12	78-8060-8172-1	Washer – Friction
3024-13	78-8052-6271-0	Washer – Tape Drum
3024-14	78-8100-1048-4	Spring – Core Holder
3024-15	78-8017-9077-1	Nut – Self-Locking, M10 x 1
3024-16	78-8032-0375-7	Screw – Hex Hd, M6 x 16
3024-17	78-8076-4742-1	Spacer – Tape Drum Bracket
3024-18	26-1000-0010-3	Washer – Flat M6
3024-19	78-8010-7169-3	Screw – Hex Hd, M6 x 12
3024-20	78-8076-4732-2	Tape Drum Assembly – Complete
3024-21	78-8052-6566-3	Washer – Friction

800af3 Adjustable Case Sealer

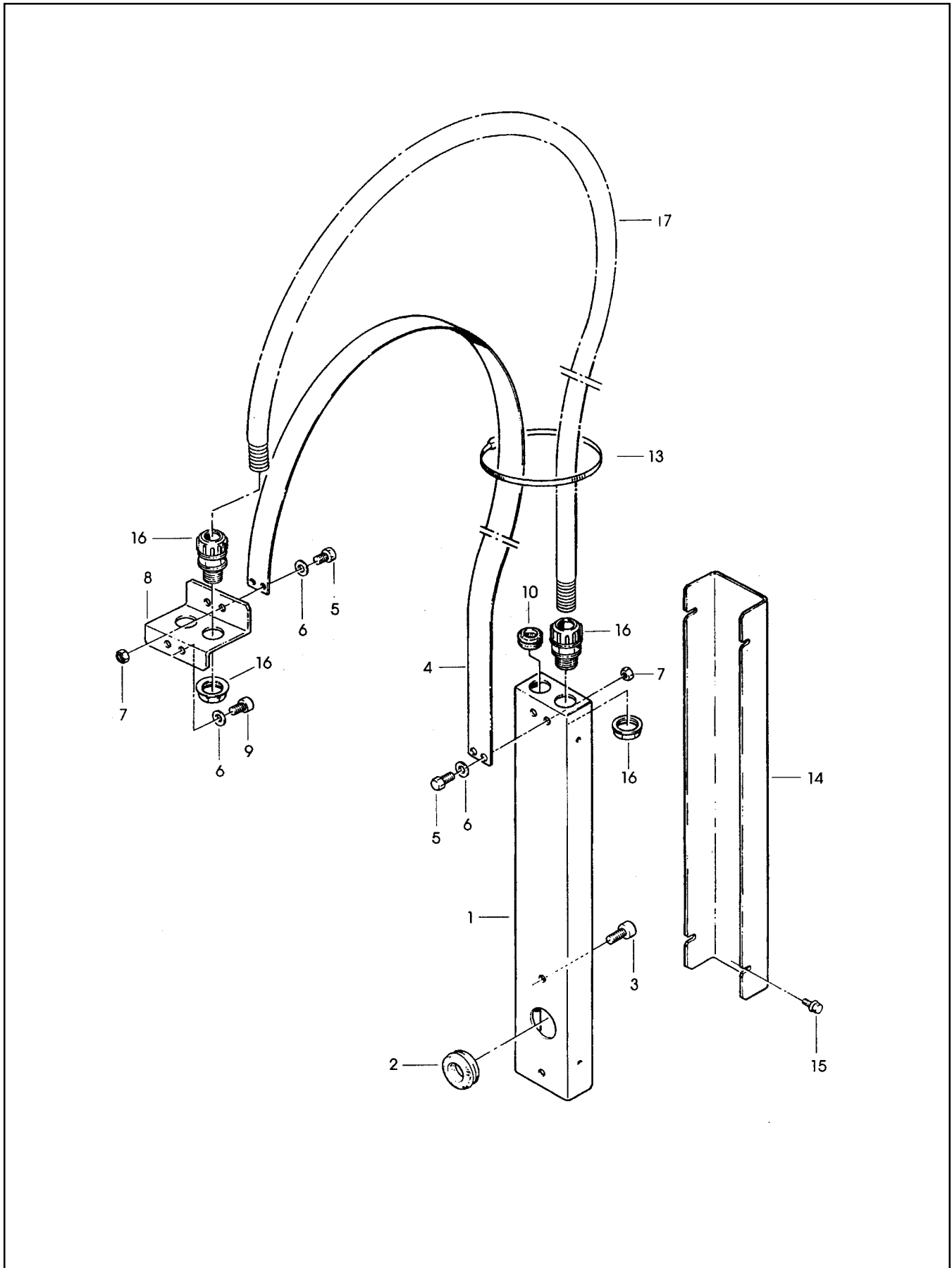


Figure 3025

Figure 3025

Ref. No.	3M Part No.	Description
3205-1	78-8091-0660-8	Housing – Wire
3205-2	78-8076-4702-5	Grommet /28
3025-3	26-1003-7963-0	Screw – Soc Hd, M8 x 16
3025-4	78-8076-4872-6	Strap – Wire
3025-5	78-8010-7163-6	Screw – Hex Hd, M5 x 10
3025-6	78-8005-5741-1	Washer – Plain, M5
3025-7	78-8010-7417-6	Nut – Hex, M5
3025-8	78-8076-4873-4	Plate – Strap
3025-9	26-1003-7949-9	Screw – Soc Hd Hex Soc, M5 x 12
3025-10	78-8060-7758-8	Fairlead /20
3025-13	78-8060-8029-3	Clamp – 140X3,5
3025-14	78-8076-4641-5	Cover
3025-15	78-8076-4875-9	Screw – Hex Hd, M4 x 8 W/Ext.
3025-16	78-8076-4520-1	Union PG13 – Sleeve /16
3025-17	78-8076-5229-8	Sleeving – /16, 1180 mm

800af3 Adjustable Case Sealer

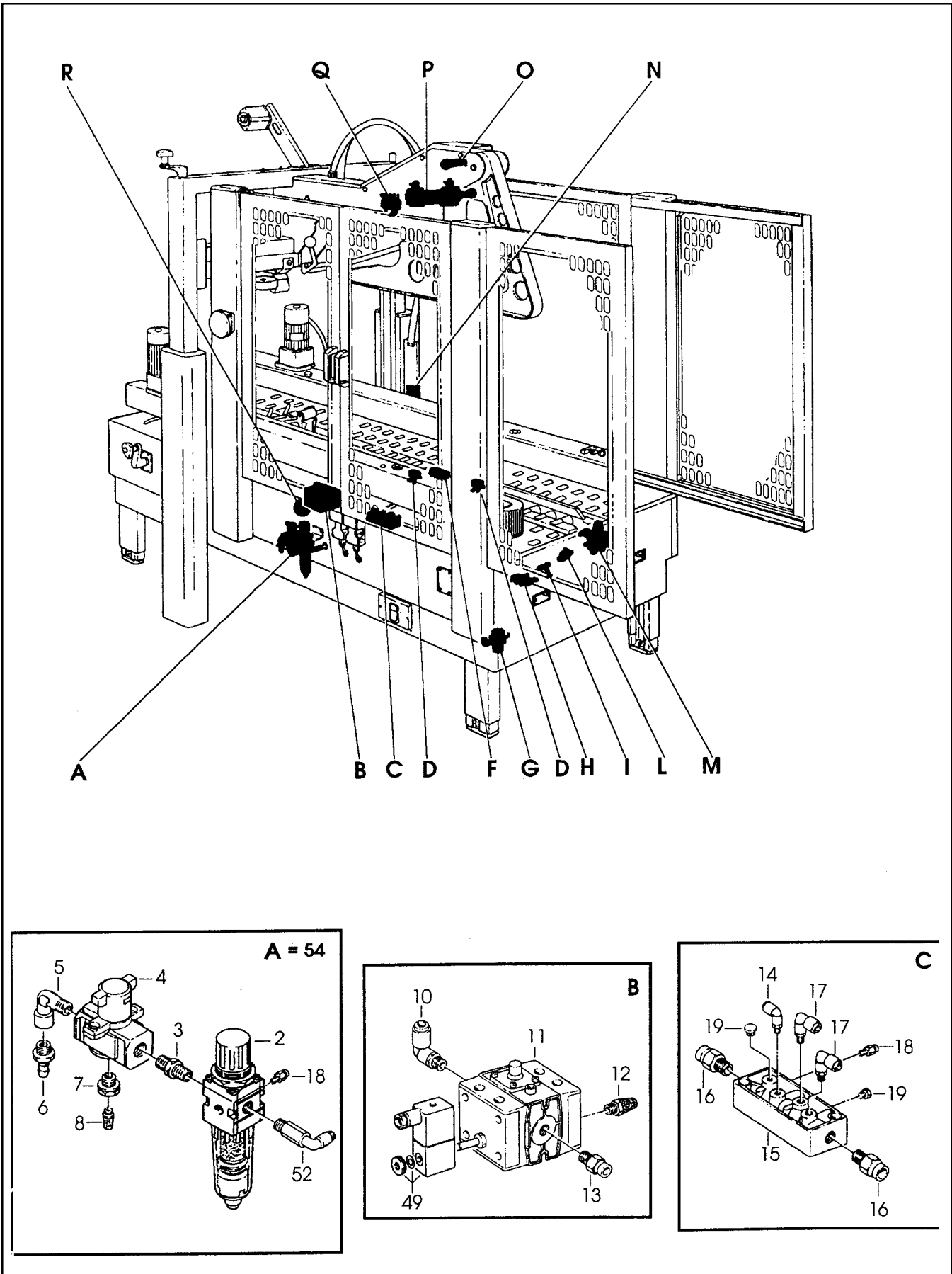


Figure 3027/1 of 2

Figure 3027 (Page 1 of 2)

Ref. No.	3M Part No.	Description
3027-2	78-8076-4668-8	Filter – Pressure Regulator
3027-3	78-8060-7899-0	Nipple – RA 012, 1/4 Inch - 1/4 Inch
3027-4	78-8091-0715-0	Valve – SMC EVHS-4500 FO2-X116
3027-5	78-8060-7900-6	Union – RA 022, 1/4 Inch - 1/4 Inch
3027-6	26-1005-6897-6	Hose Connector
3027-7	78-8076-4670-4	Reduction – 3/8 Inch - 1/8 Inch
3027-8	26-1005-6890-1	Muffler
3027-9	78-8054-8838-0	Gauge – Air
3027-10	78-8076-4885-8	Elbow – KQL08-02S
3027-11	78-8091-0419-9	Valve – MFHE-3-1/4 Inch
3027-12	78-8076-4886-6	Muffler – 1/4 Inch
3027-13	78-8076-4887-4	Union – Straight KQH08-02S
3027-14	78-8076-4888-2	Elbow – KQL04-01S
3027-15	78-8060-7651-5	Union – FR-8-1/8 Inch
3027-16	78-8076-4889-0	Union – Straight KHQ08-03S
3027-17	78-8076-4890-8	Elbow – KQL06-01S
3027-18	78-8076-4891-6	Union – Straight KQH04-01S
3027-19	78-8060-7690-3	Cap – B-1/8 Inch
3027-20	26-1005-6358-9	3-Way – 2 Position Valve
3027-21	78-8076-4892-4	Elbow – KQL04-M5
3027-23	78-8060-7656-4	Valve – VLK3-PK3
3027-24	78-8076-4894-0	Pressure Regulator – EAR111
3027-25	78-8076-4895-7	Elbow – KQL06-02S
3027-26	78-8076-4896-5	Union – Straight KQH06-02S
3027-27	78-8076-4677-9	Valve – V2A 5120-01
3027-28	78-8076-4897-3	Union – Straight KQH06-01S
3027-29	78-8076-4898-1	Union – KQT06-00

800af3 Adjustable Case Sealer

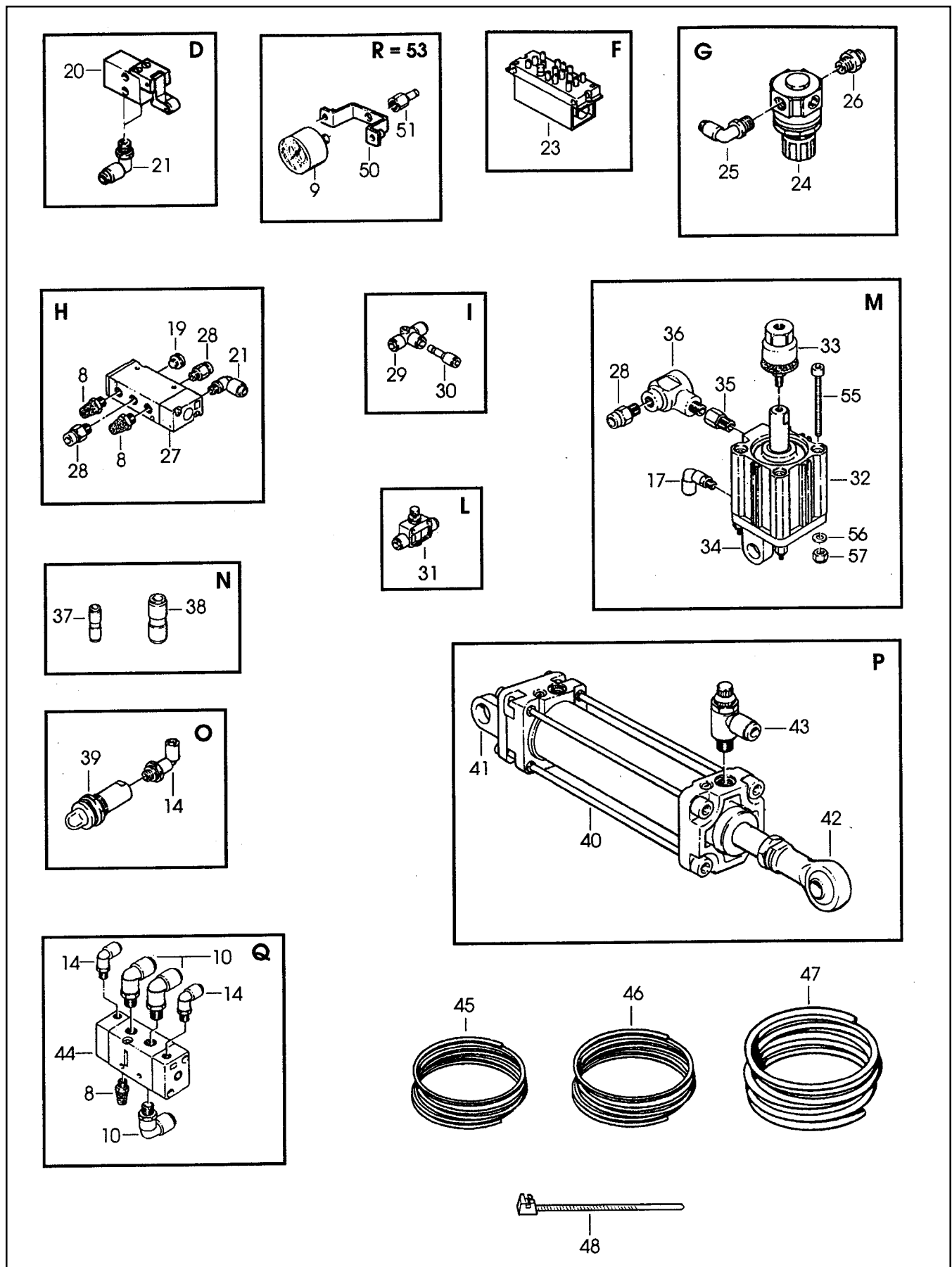


Figure 3027/2 of 2

Figure 3027 (Page 2 of 2)

Ref. No.	3M Part No.	Description
3027-30	78-8076-4899-9	Union – Straight KQR04-06
3027-31	78-8076-4900-5	Flow Regulator – AS2000F-06
3027-32	78-8076-4901-3	Air Cylinder – SMC ECQ 2B 40-25
3027-33	78-8076-4902-1	Ball Joint – CQ2
3027-34	78-8076-4903-9	Hinge – Cylinder /40
3027-35	78-8076-4904-7	Extension
3027-36	78-8013-9935-9	Valve – Quick Exhaust
3027-37	78-8076-4905-4	Union – KQH04-00
3027-38	78-8076-4906-2	Union – KQH08-00
3027-39	78-8076-4665-4	Indicator – Visual
3027-40	78-8076-4907-0	Air Cylinder – C92SB40-125
3027-41	78-8076-4908-8	Hinge
3027-42	78-8057-5747-9	Mount – Cylinder Rod End
3027-43	78-8076-4909-6	Flow Regulator – EAS2200F02-085
3027-44	78-8076-4910-4	Valve – EVFA 3230-02F
3027-45	78-8060-8033-5	Tubing – D4/3
3027-46	78-8060-8034-3	Tubing – D6/4
3027-47	78-8076-4911-2	Tubing – D8X6, 5MT
3027-48	78-8076-5228-0	Clamp – 95X2.4
3027-49	78-8091-0420-7	Coil – Magnetic, MSFW 110V, 50/60HZ
3027-50	78-8076-4535-9	Bracket
3027-51	78-8076-4672-0	Union – Straight, Female
3027-52	78-8091-0422-3	Elbow – KQW08-02S
3027-53	78-8091-0423-1	Gauge – W/Support
3027-54	78-8091-0424-9	Filter/Regulator Assembly
3027-55	78-8060-7582-2	Screw – Soc Hd Hex Soc, M5 x 70
3027-56	78-8005-5741-1	Washer – Plain, M5
3027-57	26-1005-6859-6	Nut – Self-Locking, M5

800af3 Adjustable Case Sealer

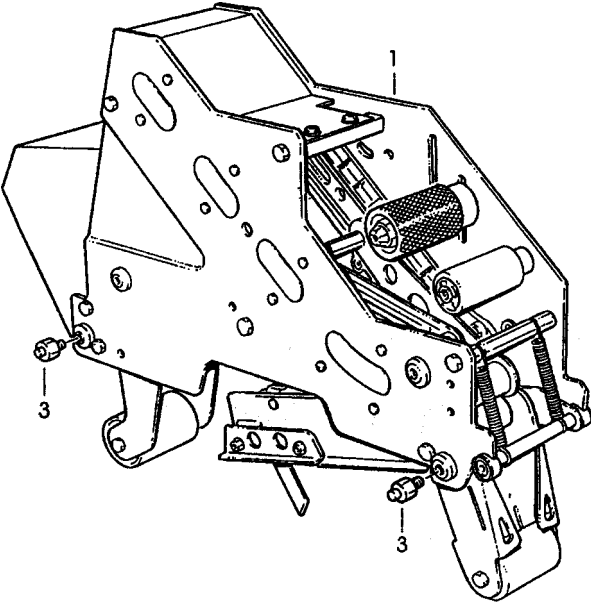


Figure 3183

Figure 3183

Ref. No.	3M Part No.	Description
3183-2	78-8114-0830-7	AccuGlide II, Upper, 3 Inch – Type 39600
3183-4	78-8076-4500-3	STud – Mounting

Note – See Section II of this manual for taping head parts.

800af3 Adjustable Case Sealer

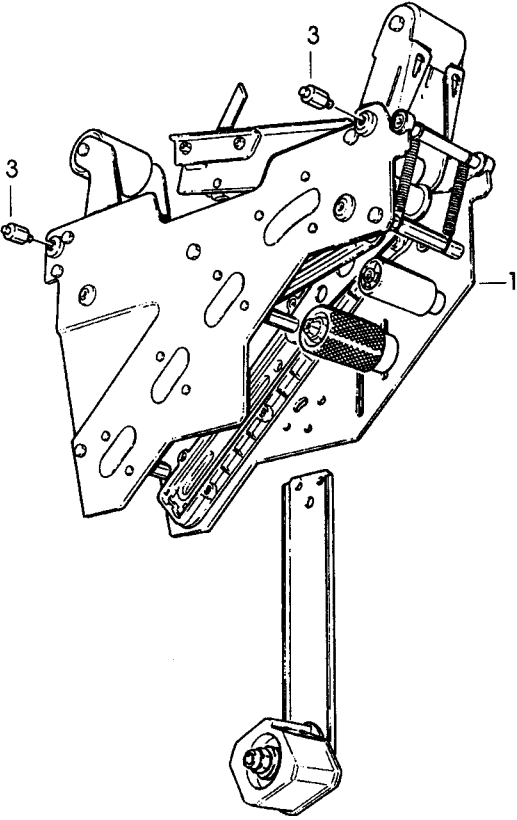


Figure 3184

Figure 3184

Ref. No.	3M Part No.	Description
3184-2	78-8114-0831-5	AccuGlide II, Lower, 3 Inch – Type 39600
3184-4	78-8055-0745-2	Stud – 3 Inch Bottom Hd Mount

Note – See Section II of this manual for taping head parts.

800af3 Adjustable Case Sealer

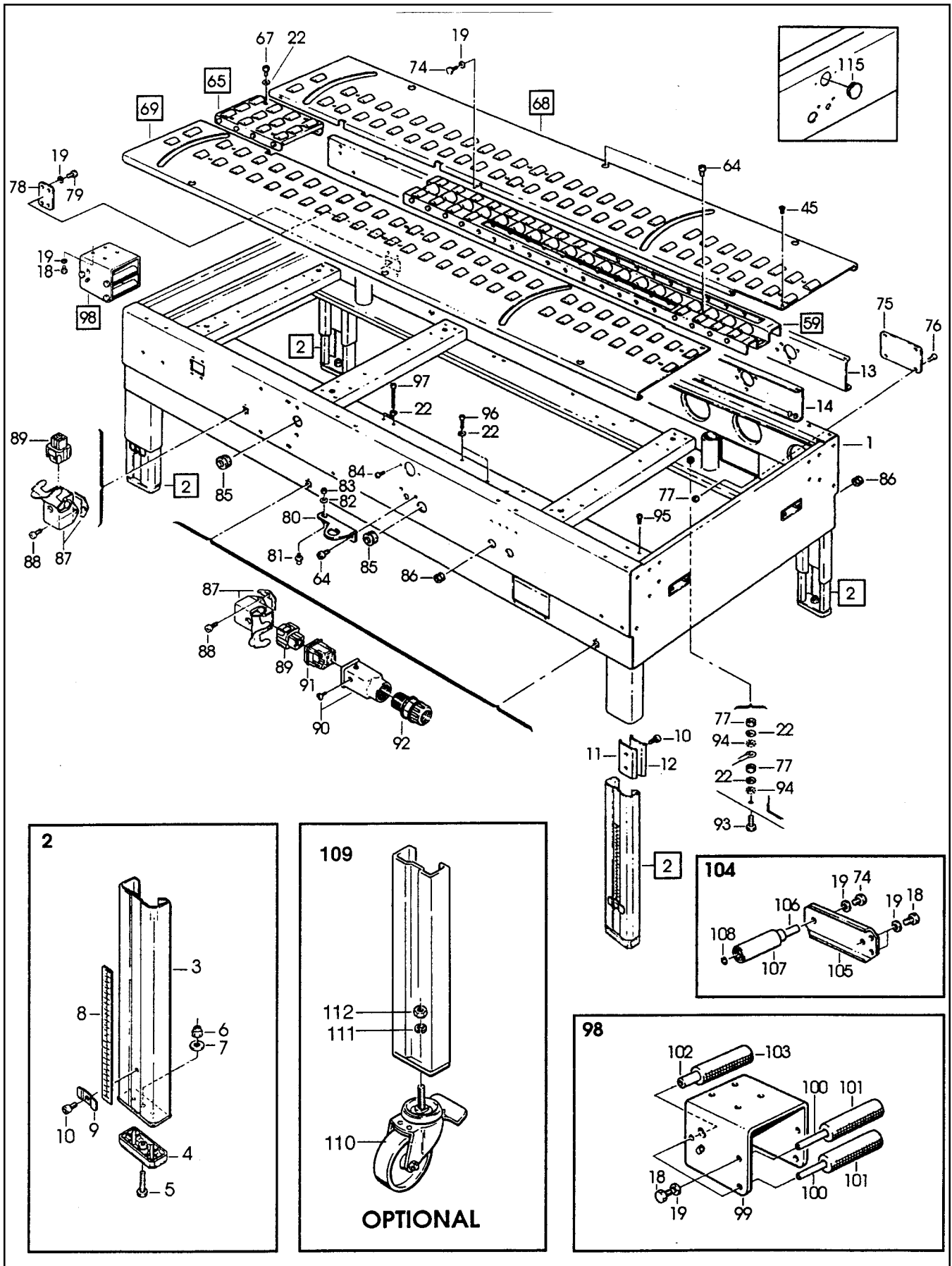


Figure 4184/1 of 4

Figure 4184 (Page 1 of 4)

Ref. No.	3M Part No.	Description
4184-1	78-8076-4747-0	Bed Conveyor
4184-2	78-8076-5381-7	Leg Assembly – Inner, W/Stop
4184-3	78-8076-5382-5	Leg – Inner
4184-4	78-8060-8480-8	Pad – Foot
4184-5	78-8055-0867-4	Screw
4184-6	78-8017-9313-0	Nut – Self-Locking, M8
4184-7	78-8017-9318-9	Washer – Plain, 8 mm
4184-8	78-8060-8481-6	Label – Height
4184-9	78-8076-5383-3	Stop – Leg
4184-10	26-1003-7963-0	Screw – Soc Hd, M8 x 16
4184-11	78-8052-6677-8	Clamp – Inner
4184-12	78-8052-6676-0	Clamp – Outer
4184-13	78-8076-4748-8	Center Frame – Right
4184-14	78-8076-4749-6	Center Frame – Left
4184-15	26-1003-7964-8	Screw – Soc Hd Hex Soc Dr, M8 x 20
4184-16	78-8060-7722-4	Spacer – L=144
4184-17	78-8091-0696-2	Spacer
4184-18	78-8032-0375-7	Screw – Hex Hd, M6 x 16
4184-19	26-1000-0010-3	Washer – Flat, M6
4184-20	78-8076-4751-2	Bearing Support – Gate
4184-21	78-8032-0382-3	Screw – Soc Hex Hd, M5 x 16
4184-22	78-8005-5741-1	Washer – Plain, M5
4184-23	78-8076-4752-0	Gate
4184-24	78-8076-4753-8	Spacer – Gate
4184-25	78-8076-4754-6	Washer – Special, Gate
4184-26	78-8076-4755-3	Support – Cylinder, Gate
4184-27	78-8076-4756-1	Shaft – Cylinder, Gate
4184-28	78-8056-3965-1	Ring – 8 DIN 6799
4184-29	78-8076-4757-9	Bumper

800af3 Adjustable Case Sealer

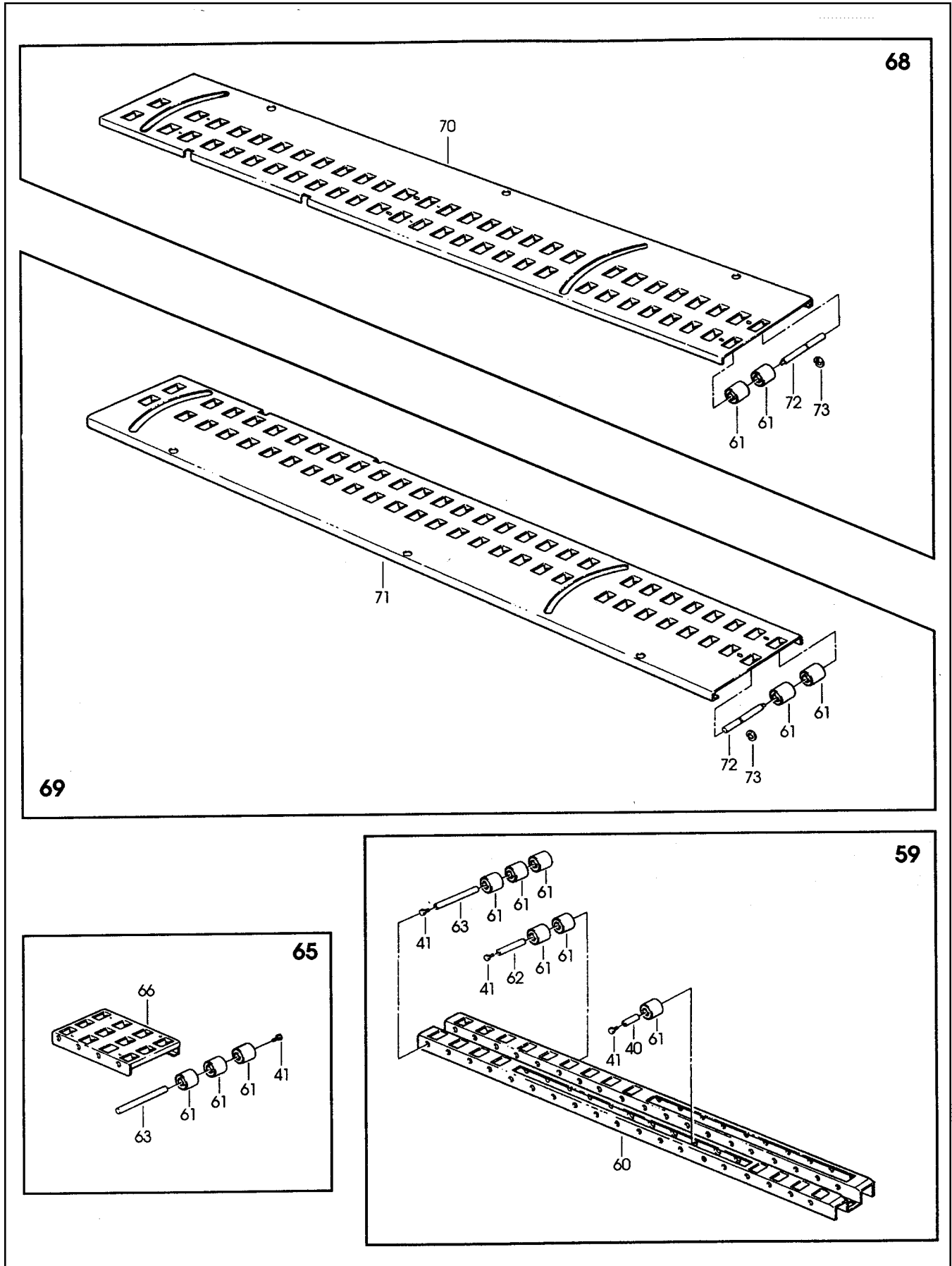


Figure 4184/2 of 4

Figure 4184 (Page 2 of 4)

Ref. No.	3M Part No.	Description
4184-30	78-8076-4772-8	Support Assembly W/Cam – Gate
4184-31	78-8076-4773-6	Support Assembly – Cam, Gate
4184-32	26-1003-7947-3	Screw – Soc Hd Hex Soc, M4 x 35
4184-33	78-8054-8758-0	Spacer – Valve Holder
4184-34	78-8059-5607-1	Plate – Threaded
4184-35	78-8054-8757-2	Pin – Spring Holder
4184-36	26-1005-6859-6	Nut – Self-Locking, M5
4184-37	78-8076-4774-4	Spring
4184-38	78-8055-0746-0	Link – Front Actuator, 12AF Black
4184-39	78-8055-0747-8	Link – Rear Actuator, 12AF Black
4184-40	78-8054-8857-0	Shaft – 8 x 43 mm
4184-41	78-8010-7163-6	Screw — Hex Hd, M5 x 10
4184-42	26-1002-4955-1	Screw – Self-Tap, 8P x 13
4184-43	78-8076-4775-1	Support Assembly– Cam
4184-44	78-8054-8858-8	Spacer – 8 x 26,5 mm
4184-45	26-1002-3866-1	Screw – Flat Hd Hx Dr, M5 x 10
4184-46	78-8076-4776-9	Cam – Long
4184-47	78-8076-4777-7	Cam – Short
4184-48	26-1003-7953-1	Screw – Soc Hd, M5 x 30
4184-49	78-8023-2334-1	Screw – Soc Hd, Hex Soc, M6 x 25
4184-50	78-8076-4778-5	Actuator Assembly
4184-51	78-8076-4779-3	Support – Actuator
4184-52	26-1003-6914-4	Nut – Plastic Insert, M4
4184-53	78-8005-5740-3	Washer – Plain, 4 mm
4184-54	78-8076-4780-1	Guide – Right, Actuator
4184-55	78-8076-4781-9	Guide – Left, Actuator
4184-56	78-8076-4782-7	Actuator – Flap Folder
4184-57	78-8076-4784-3	Screw – Soc Hd Hex Hd, M6 x 35

800af3 Adjustable Case Sealer

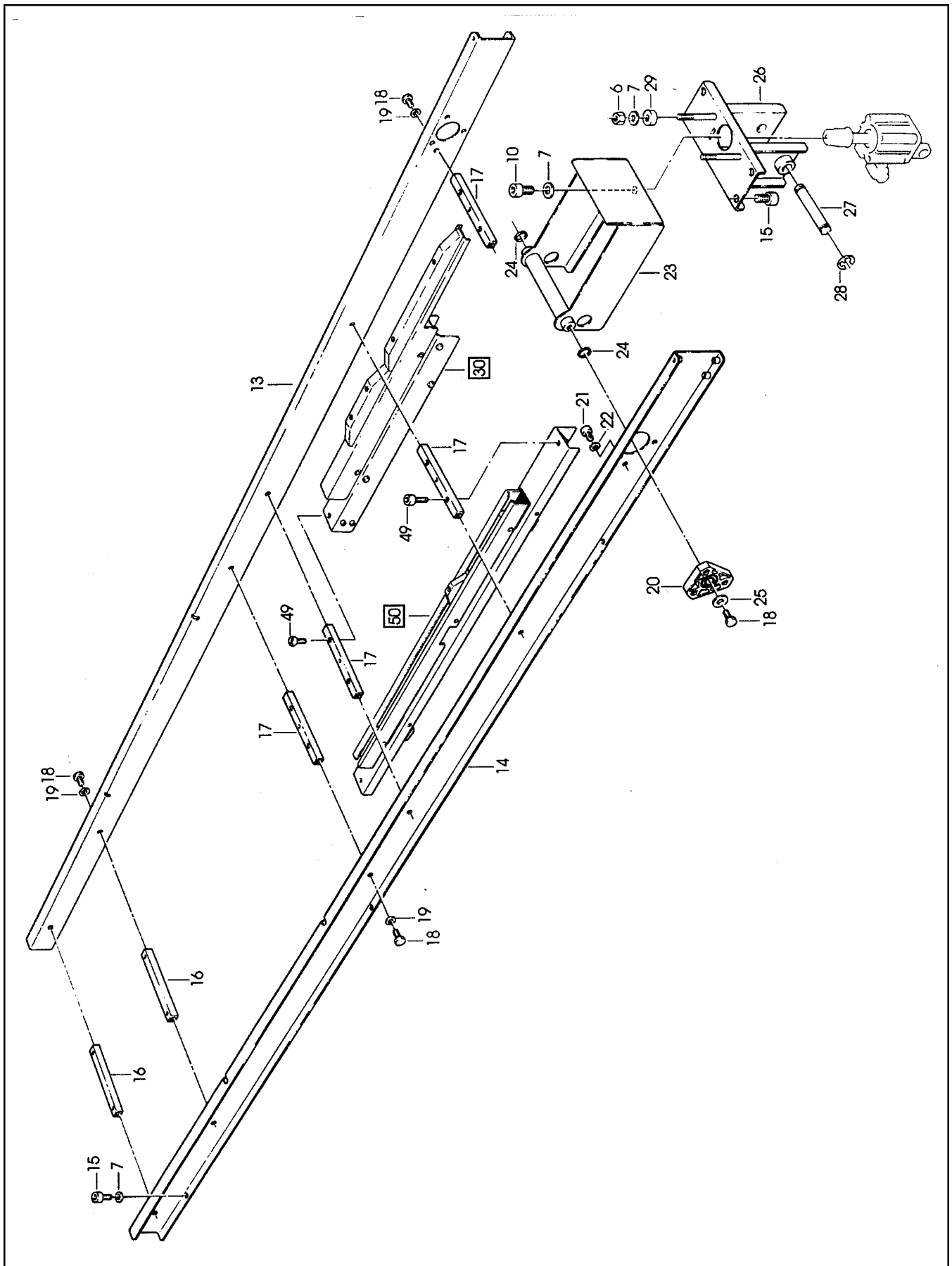


Figure 4184/3 of 4

Figure 4184 (Page 3 of 4)

Ref. No.	3M Part No.	Description
4184-58	78-8076-4783-5	Plate – Actuator
4184-59	78-8076-4764-5	Conveyor Assembly – Center
4184-60	78-8091-0356-3	Conveyor – Center
4184-61	78-8060-7693-7	Roller – 32 x 38
4184-62	78-8076-4766-0	Shaft – /8 x 83
4184-63	78-8052-6694-3	Shaft – /8 x 128
4184-64	78-8010-7209-7	Screw – Soc Hd, M6 x 12
4184-65	78-8076-4762-9	Conveyor Assembly – Rear
4184-66	78-8076-4763-7	Conveyor – Rear
4184-67	26-1003-7948-1	Screw – Soc Hd Hex Soc, M5 x 10
4184-68	78-8076-4767-8	Conveyor Assembly – Right
4184-69	78-8076-4768-6	Conveyor Assembly – Left
4184-70	78-8113-6901-2	R/H Conveyor Label Assembly (W/English Language Label)
4184-71	78-8113-6902-0	L/H Conveyor Label Assembly (W/English Language Label)
4184-72	78-8076-4771-0	Shaft – Roller
4184-73	78-8060-8035-0	E-Ring – 7DIN6799
4184-74	78-8010-7169-3	Screw – Hex Hd, M6 x 12
4184-75	78-8060-8487-3	Cover – Switch
4184-76	78-8060-8087-1	Screw – M5 x 10
4184-77	78-8010-7417-6	Nut – Hex, M5
4184-78	78-8076-4761-1	Plate
4184-79	26-1003-5829-5	Screw – Hex Hd, M6 x 12
4184-80	78-8091-0612-9	Plate – L/H
4184-81	78-8091-0613-7	Shaft – Valve
4184-82	78-8042-2919-9	Washer – Triple, M6
4184-83	26-1003-6916-9	Nut – Locking Plastic Insert, M6
4184-84	78-8076-4625-8	Screw – Special, M5 x 16
4184-85	78-8076-4702-5	Grommet – /28
4184-86	78-8060-7758-8	Fairlead /20

800af3 Adjustable Case Sealer

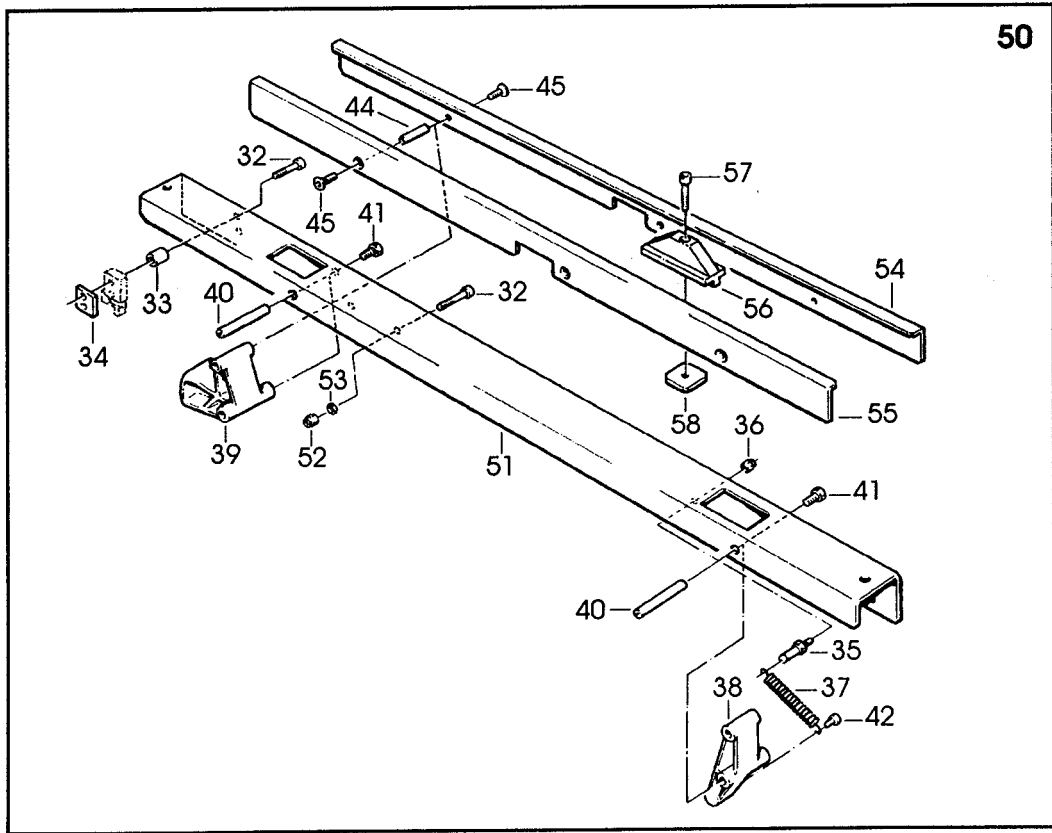
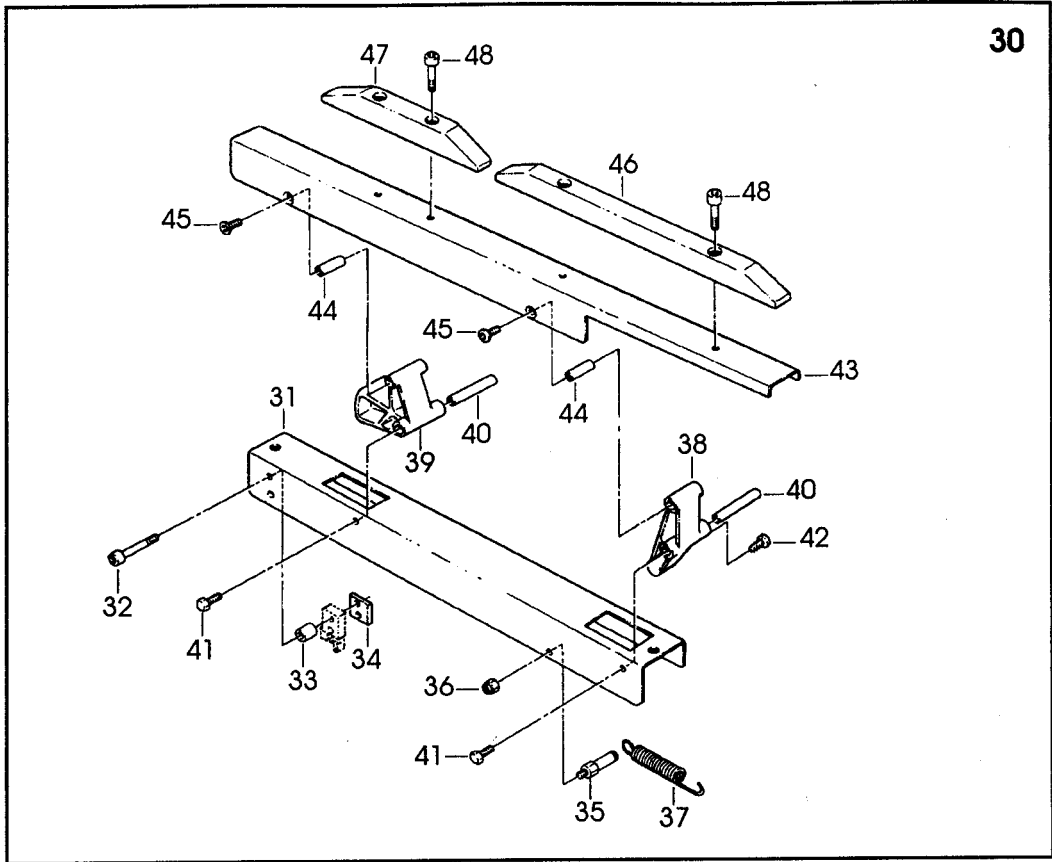


Figure 4184/4 of 4

Figure 4184 (Page 4 of 4)

Ref. No.	3M Part No.	Description
4184-87	78-8060-7876-8	Cover Plug – Lateral
4184-88	78-8028-8208-0	Screw – 6P x 9,5
4184-89	78-8060-7873-5	Plug – Female
4184-90	78-8060-7877-6	Plug Housing – Vertical
4184-91	78-8060-7875-0	Plug – Male
4184-92	78-8076-4532-6	Union
4184-93	78-8060-8488-1	Screw – Hex Hd, M5 x 20
4184-94	78-8046-8217-3	Washer – Special
4184-95	78-8094-6479-1	Screw – Self-Tapping. 6P x 30
4184-96	26-1003-7954-9	Screw - Soc Hd, M5 x 35
4184-97	78-8060-7582-2	Screw – Soc Hd Hex Soc, M5 x 70
4184-98	78-8076-5025-0	Support Assembly – Tape Roll Bracket
4184-99	78-8076-5027-6	Support – Tape Roll Bracket
4184-100	78-8076-5028-4	Shaft – Roller
4184-101	78-8076-5030-0	Roller – Knurled, 114 mm
4184-102	78-8076-5031-8	Shaft – Roller
4184-103	78-8076-5032-6	Roller – Knurled, 110,5 mm
4184-104	78-8114-4717-2	Bracket Assembly
4184-105	78-8076-5033-4	Bracket
4184-106	78-8114-4718-0	Shaft
4184-107	78-8114-4719-8	Roller
4184-108	26-1000-1613-3	Ring – Retaining 10DIN6799
4184-109	78-8098-9076-3	Caster Assembly
4184-110	26-1009-9096-4	Caster – Dual Locking
4184-111	26-1009-9094-9	Washer – Spring, Helical, M12
4184-112	26-1009-9095-6	Nut – M12
4184-115	78-8076-4536-7	Cap – /45X1.5

800af3 Adjustable Case Sealer

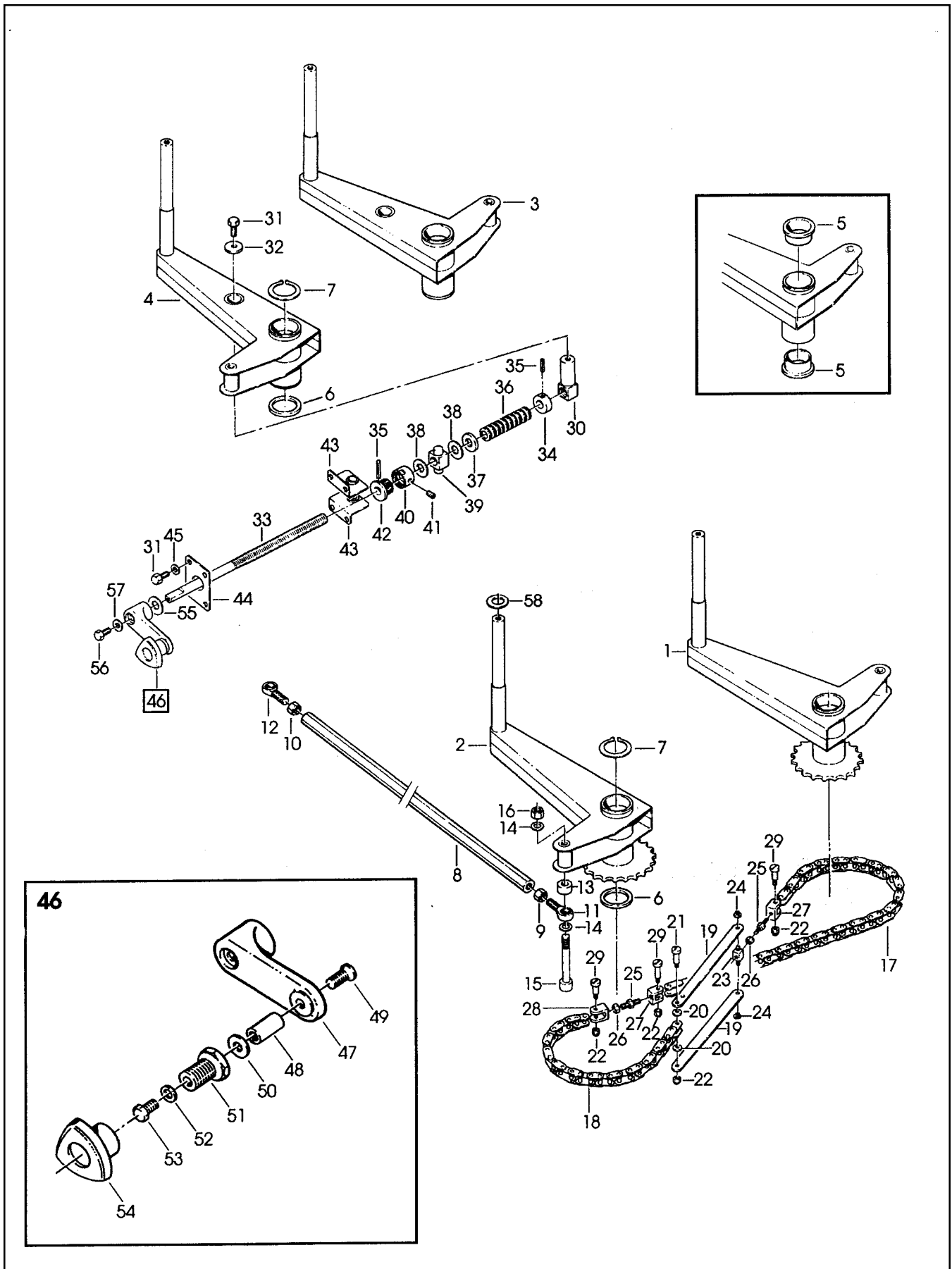


Figure 4185

Figure 4185

Ref. No.	3M Part No.	Description
4185-1	78-8091-0741-6	Arm Assembly – Front, R/H
4185-2	78-8091-0742-4	Arm Assembly – Front, L/H
4185-3	78-8091-0743-2	Arm Assembly – Rear, R/H
4185-4	78-8091-0744-0	Arm Assembly – Rear, L/H
4185-5	78-8076-4791-8	Bushing
4185-6	78-8060-7534-3	Washer
4185-7	78-8060-7521-0	Lock Ring
4185-8	78-8076-4792-6	Bar – Coupling
4185-9	78-8060-7525-1	Nut – Right Flat, M10
4185-10	78-8060-7546-7	Nut – Left Flat, M10
4185-11	78-8076-4793-4	Ball Joint – KA 10 D
4185-12	78-8076-4794-2	Ball Joint – KAL 10 D
4185-13	78-8076-4795-9	Spacer
4185-14	78-8052-6566-3	Washer – Friction
4185-15	78-8076-4796-7	Screw – Soc Hd Hex Hd, M10 x 80
4185-16	26-1003-6918-5	Nut – Plastic Insert, M10 Hex Flange
4185-17	78-8076-4797-5	Chain – Metric #35, 59 Links
4185-18	78-8076-4798-3	Chain – Metric #35, 47 Links
4185-19	78-8054-8787-9	Chain Link
4185-20	78-8054-8783-8	Washer – Special
4185-21	78-8060-7519-4	Screw – M3 x 25
4185-22	78-8059-5517-2	Nut – Self-Locking, M3
4185-23	78-8054-8784-6	Block – Chain
4185-24	78-8056-3945-3	E-Ring – M4
4185-25	78-8054-8785-3	Rod – Threaded Right/ Left
4185-26	78-8010-7418-4	Nut – Hex, M6
4185-27	78-8054-8786-1	Chain Connector
4185-28	78-8054-8788-7	Chain Connector
4185-29	78-8060-7520-2	Screw – M3 x 20
4185-30	78-8076-4799-1	Nut – Arm
4185-31	78-8060-7886-7	Screw – Special Hex Hd, M6 x 16
4185-32	78-8076-4754-6	Washer – Special, Gate
4185-33	78-8076-4801-5	Screw – Centering
4185-34	78-8060-7981-6	Bushing – Dowel
4185-35	78-8054-8586-5	Pin
4185-36	78-8060-7984-0	Washer – Belleville
4185-37	78-8060-7983-2	Washer
4185-38	78-8060-8036-8	Washer – Nylon
4185-39	78-8060-8436-0	Plastic Nut
4185-40	78-8076-4802-3	Ring Nut
4185-41	78-8076-4803-1	Set Screw – M5 x 8
4185-42	78-8076-4804-9	Bushing – Threaded
4185-43	78-8076-4805-6	Plate – W/Bushing
4185-44	78-8076-4806-4	Plate
4185-45	26-1000-0010-3	Washer – Flat, M6
4185-46	78-8076-4807-2	Crank Assembly
4185-47	78-8076-5422-9	Crank
4185-48	78-8070-1509-0	Shaft – Crank
4185-49	26-1005-5316-8	Screw – Flat Hd Hex Dr, M5 x 16
4185-50	78-8070-1510-8	Washer – Nylon, /7 x 15 x 1
4185-51	78-8070-1511-6	Bushing
4185-52	78-8005-5740-3	Washer – Plain 4 mm
4185-53	78-8010-7157-8	Screw – Hex Hd, M4 x 10
4185-54	78-8070-1512-4	Knob – VTR-B-M12
4185-55	78-8070-1548-8	Washer – Nylon 20 x 12, 5 x 1
4185-56	78-8032-0375-7	Screw – Hex Hd, M6 x 16
4185-57	78-8076-4809-8	Washer – Crank
4185-58	78-8060-7541-8	Washer

800af3 Adjustable Case Sealer

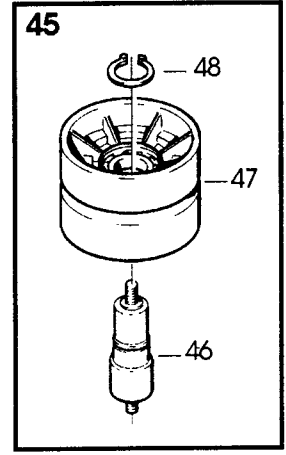
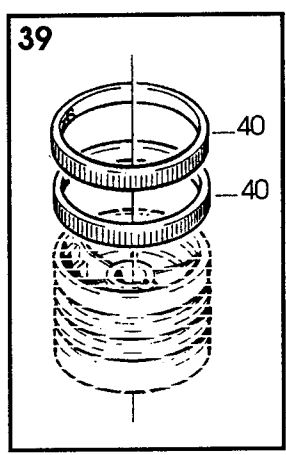
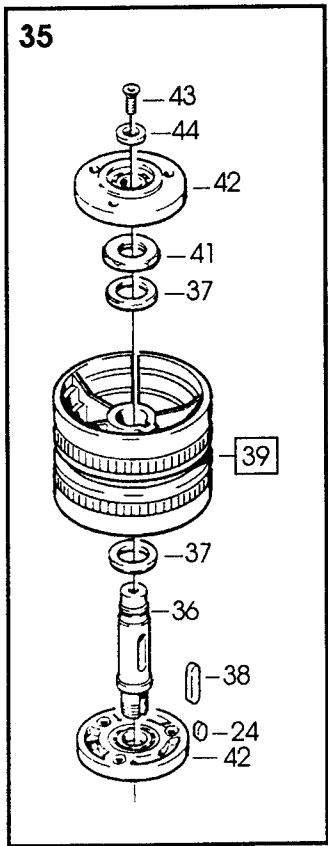
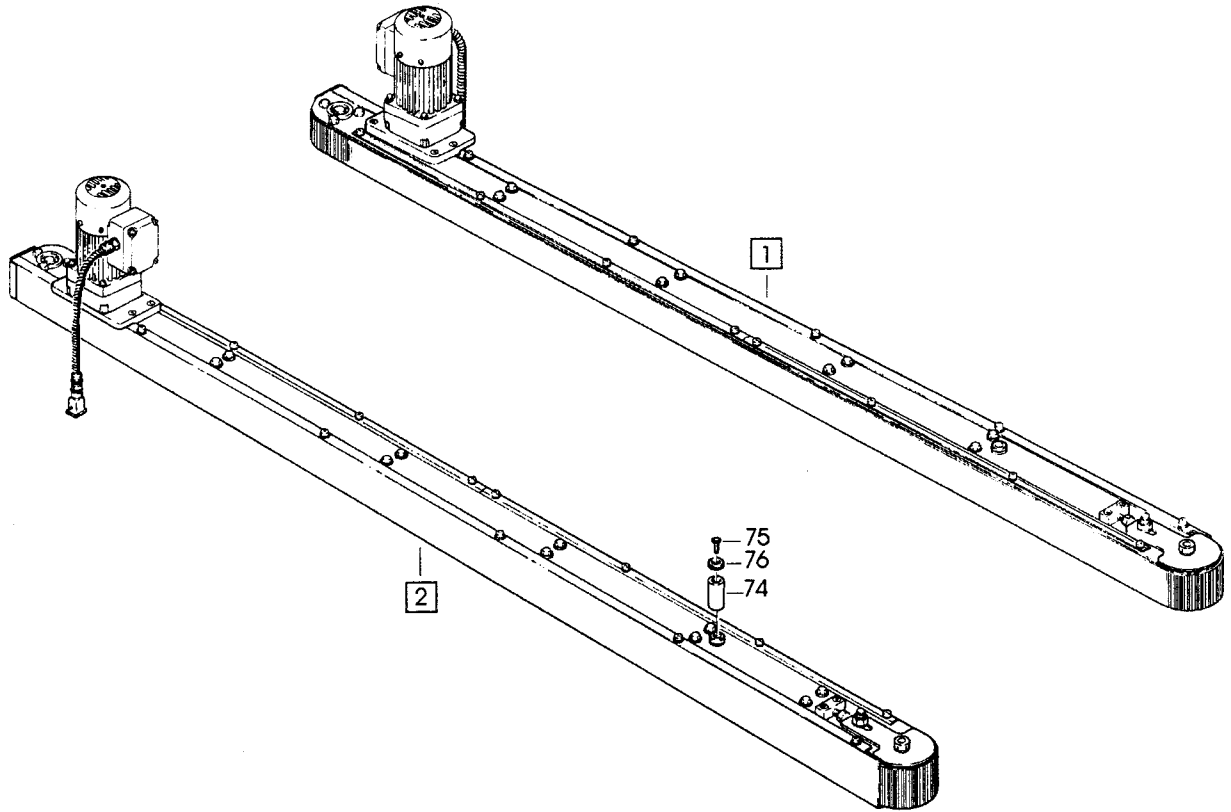


Figure 4186/1 of 2

Figure 4186 (Page 1 of 2)

Ref. No.	3M Part No.	Description
4186-1	78-8091-0745-7	Side Drive Assembly – R/H, W/O Motor
	78-8098-8956-7	Side Drive Assembly – R/H, With Motor
4186-2	78-8091-0746-5	Side Drive Assembly – L/H, W/O Motor
	78-8098-8957-5	Side Drive Assembly – L/H, With Motor
4186-3	78-8091-0747-3	Guide – Lower, R/H
4186-4	78-8091-0748-1	Guide – Lower, L/H
4186-5	78-8091-0749-9	Guide – Upper, R/H
4186-6	78-8091-0750-7	Guide – Upper, L/H
4186-7	78-8091-0500-6	Bushing – Side Drive
4186-8	78-8060-7995-6	Pin – Roller
4186-9	78-8060-7996-4	Roller
4186-10	78-8091-0751-5	Plate – Roller Stop, Right
4186-11	78-8091-0752-3	Plate – Roller Stop, Left
4186-12	78-8091-0753-1	Plate – Roller Stop, Right, R/H Drive
4186-13	78-8091-0754-9	Plate – Roller Stop, Left, R/H Drive
4186-14	78-8091-0755-6	Plate – Roller Stop, Right, L/H Drive
4186-15	78-8091-0756-4	Plate – Roller Stop, Left, L/H Drive
4186-16	78-8076-5255-3	Screw – Phillips Hd, M4 x 12
4186-17	78-8005-5740-3	Washer – Plain, 4 mm
4186-18	78-8076-4855-1	Washer – Special
4186-19	78-8054-8910-7	Spacer – Hexagonal
4186-20	26-1003-5829-5	Screw – Hex Hd, M6 x 12
4186-21	26-1000-0010-3	Washer – Flat, M6
4186-22	78-8076-5439-3	Flange Assembly
4186-23	78-8091-0757-2	Extension – Gearmotor
4186-24	78-8046-8135-7	Key – 5 x 5, 12 mm
4186-25	78-8091-0758-0	Sprocket – 3/8 Inch, Z=14
4186-26	78-8057-5834-5	Tab Washer
4186-27	78-8057-5835-2	Centering Washer
4186-28	78-8091-0759-8	Sprocket – 3/8 Inch, Z=23
4186-29	78-8076-4933-6	Chain – 3/8 Inch Pitch, 52 Pitch
4186-30	78-8094-6109-4	Support – Gearmotor
4186-31	78-8010-7210-5	Screw – Soc Hd Hex Soc, M6 x 20
4186-32	78-8070-1522-3	Gearmotor – 115V, 60HZ, Bodine 42R5BFC1-E2
4186-33	78-8070-1523-1	Screw – 1/4-28 x 1/2 SHCS
4186-34	26-1011-8828-7	Capacitor – 115V Gearmotor
4186-35	78-8076-4862-7	Pulley – Drive
4186-36	78-8054-8878-6	Shaft – Pulley Keyed
4186-37	78-8054-8879-4	Washer – /20,5 mm
4186-38	78-8057-5739-6	Key – M5 x 5 x 30 mm

800af3 Adjustable Case Sealer

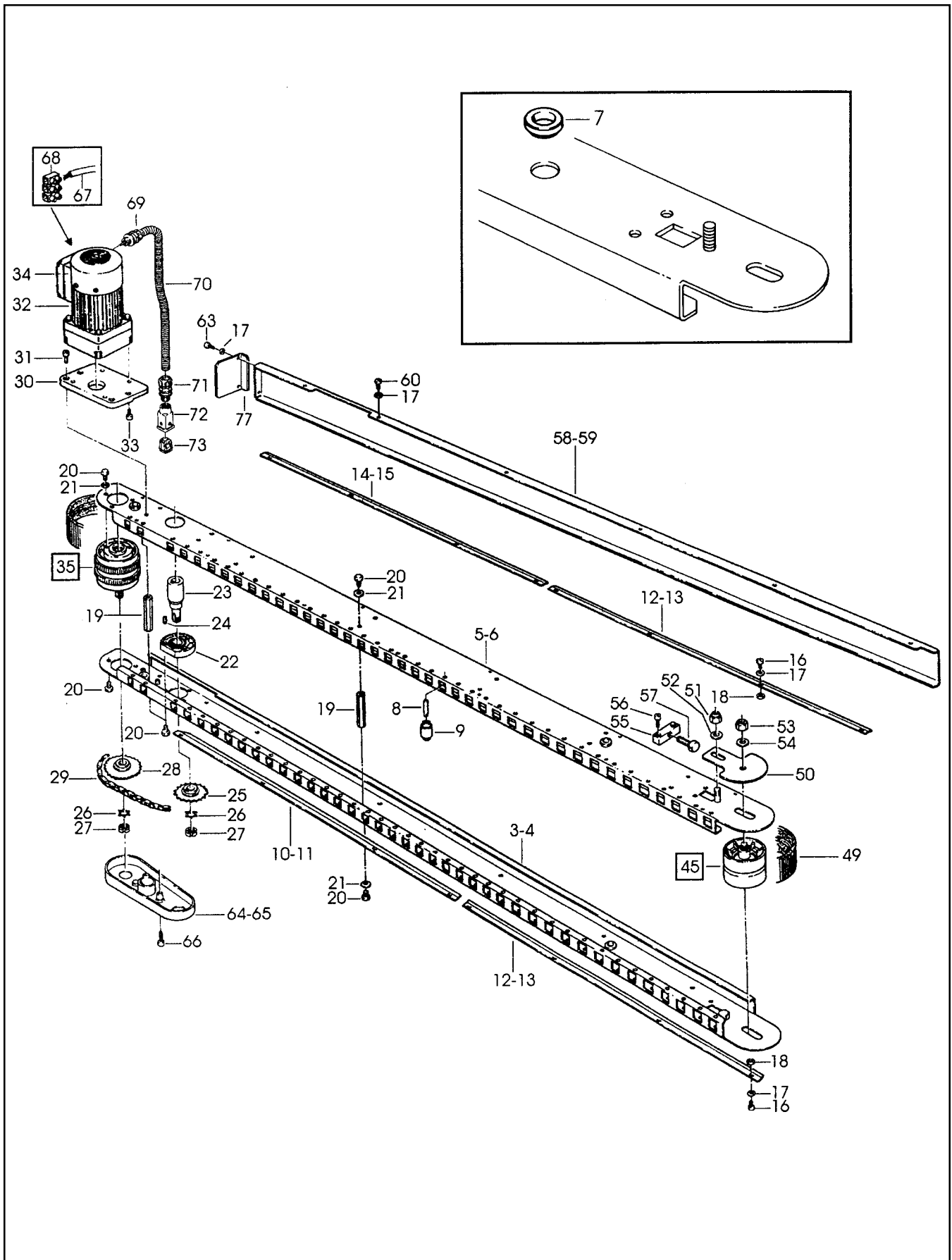


Figure 4186/2 of 2

Figure 4186 (Page 2 of 2)

Ref. No.	3M Part No.	Description
4186-39	78-8076-5105-0	Pulley Assembly – Drive
4186-40	78-8052-6713-1	Ring – Polyurethane
4186-41	78-8017-9096-1	Nut – Special, M18 x 1
4186-42	78-8076-5442-7	Flange Assembly
4186-43	26-0001-5862-1	Screw – Flat Hd Soc, M5 x 12
4186-44	78-8054-8877-8	Washer – 5.5/20 x 4
4186-45	78-8060-8014-5	Idler Roller Assembly
4186-46	78-8054-8913-1	Shaft – Roller
4186-47	78-8052-6710-7	Roller – Idler
4186-48	12-7997-0272-0	E-Ring – M-25
4186-49	78-8076-4865-0	Belt – Box Drive
4186-50	78-8091-0761-4	Plate – Belt Tensioning
4186-51	26-1003-6918-5	Nut – Plastic Insert, M10 Hex Flange
4186-52	78-8052-6566-3	Washer – Friction
4186-53	26-1000-1347-8	Nut – Hex, M8
4186-54	78-8017-9318-9	Washer – Plain, 8 mm
4186-55	78-8054-8903-2	Block – Belt
4186-56	78-8010-7210-5	Screw – Soc Hd Hex Soc, M6 x 20
4186-57	78-8054-8904-0	Screw – Belt Adjustment
4186-58	78-8091-0762-2	Cover – Drive, Right
4186-59	78-8091-0763-0	Cover – Drive, Left
4186-60	26-1002-5753-9	Screw – Self-Tapping
4186-63	26-1002-4955-1	Screw – Self-Tap, 8P x 13
4186-64	78-8091-0764-8	Cover – Chain, Right
4186-65	78-8091-0765-5	Cover – Chain, Left
4186-66	78-8010-7165-1	Screw – Flat Hd Soc, M5 x 25
4186-67	78-8060-8053-3	Wire – 3-Pole, 5 Meters Length
4186-68	78-8076-4968-2	Terminal
4186-69	78-8060-7631-7	Connector – 3/8 Inch
4186-70	78-8076-4871-8	Sleeving – /12, 600 mm
4186-71	78-8060-7626-7	Connector – PG 11/12
4186-72	78-8060-7877-6	Plug – Housing Vertical
4186-73	78-8060-7875-0	Plug – Male
4186-74	78-8091-0766-3	Spacer – Drive
4186-75	26-1001-9843-6	Screw – Flat Soc Hd, M6 x 16
4186-76	78-8054-8577-4	Washer – Special
4186-77	78-8114-4787-5	Guard – Belt

800af3 Adjustable Case Sealer

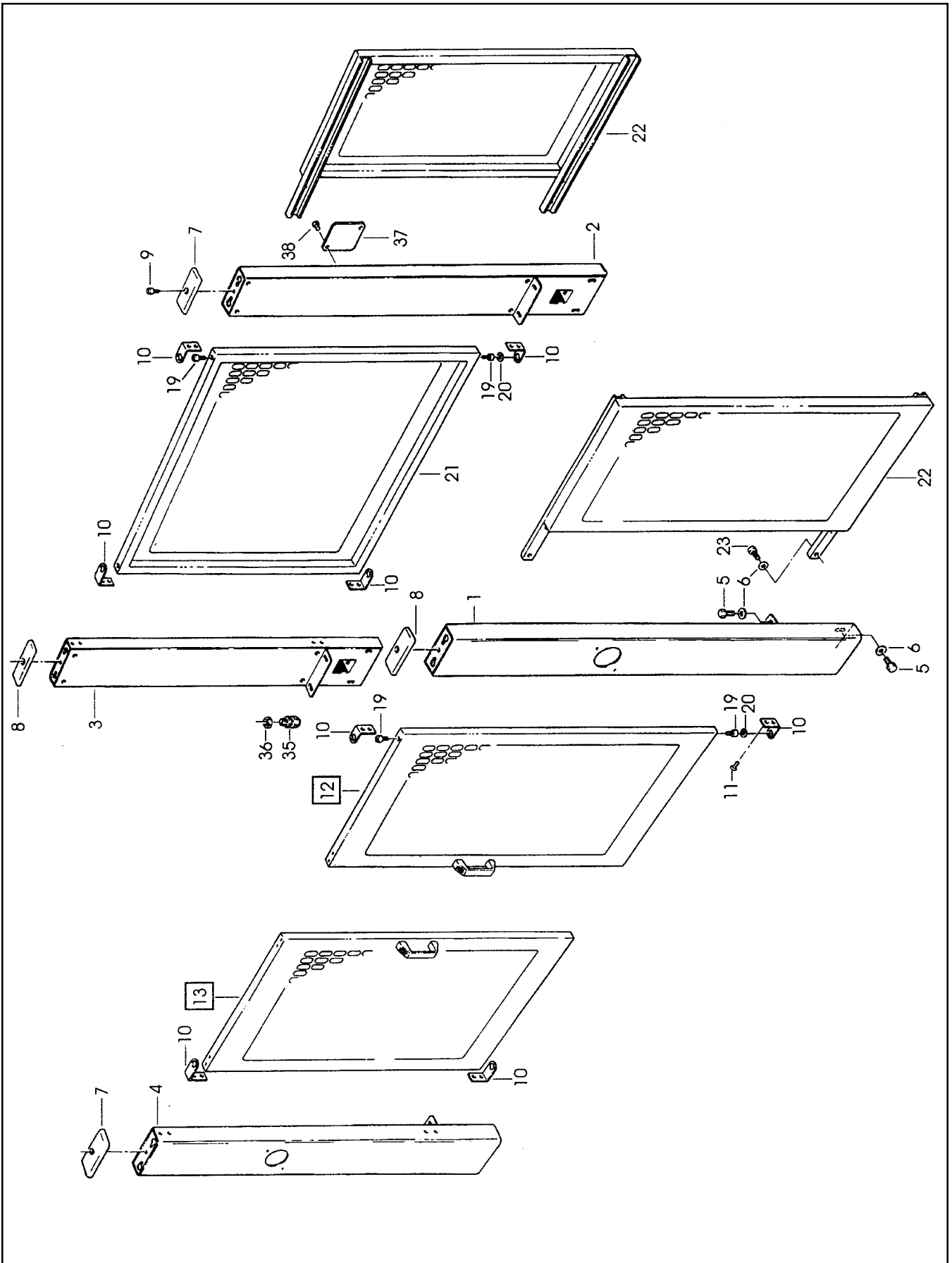


Figure 4188/1 of 2

Figure 4188 (Page 1 of 2)

Ref. No.	3M Part No.	Description
4188-1	78-8113-6905-3	Jamb Assembly – Right Front (W/English Language Label)
4188-2	78-8113-6903-8	Jamb Assembly – Right Rear (W/English Language Label)
4188-3	78-8113-6904-6	Jamb Assembly – Left Rear (W/English Language Label)
4188-4	78-8113-6906-1	Jamb Assembly – Left Front (W/English Language Label)
4188-5	26-1003-5842-8	Screw – Hex Hd, M8 x 20
4188-6	78-8017-9318-9	Washer – Plain, 8 mm
4188-7	78-8076-4511-0	Cap – Front, R/H
4188-8	78-8076-4512-8	Cap – Front, L/H
4188-9	78-8010-7210-5	Screw – Soc Hd Hex Soc, M6 x 20
4188-10	78-8076-4916-1	Hinge
4188-11	26-0001-5862-1	Screw – Flat Hd Soc, M5 x 12
4188-12	78-8091-0769-7	Wing Assembly – Left
4188-13	78-8091-0768-9	Wing Assembly – Right
4188-14	78-8091-0770-5	Wing
4188-15	78-8060-7807-3	Handle
4188-16	78-8091-0771-3	Pocket
4188-17	26-1003-7949-9	Screw – Soc Hd Hex Soc, M5 x 12
4188-18	78-8005-5741-1	Washer – Plain, M5

800af3 Adjustable Case Sealer

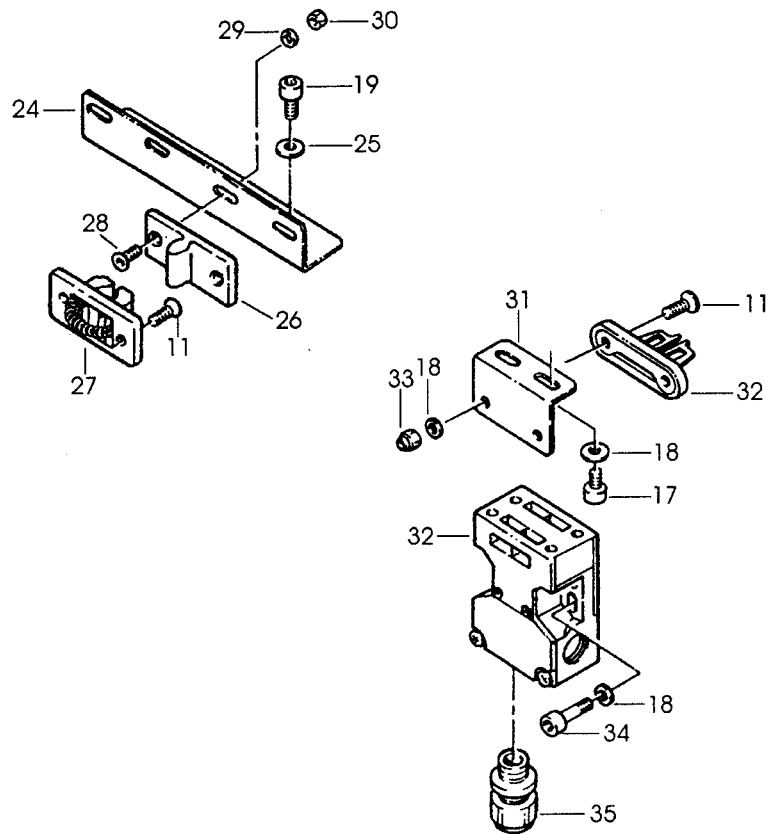
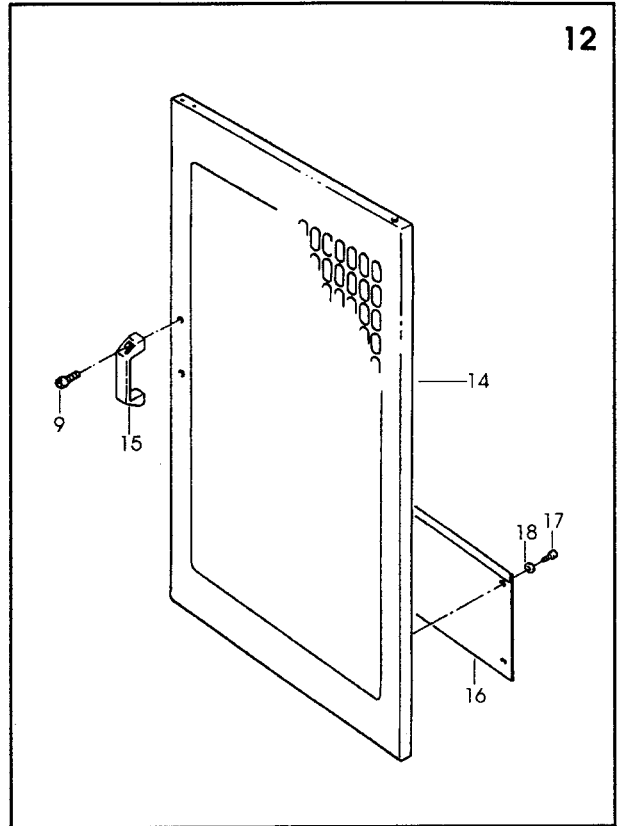
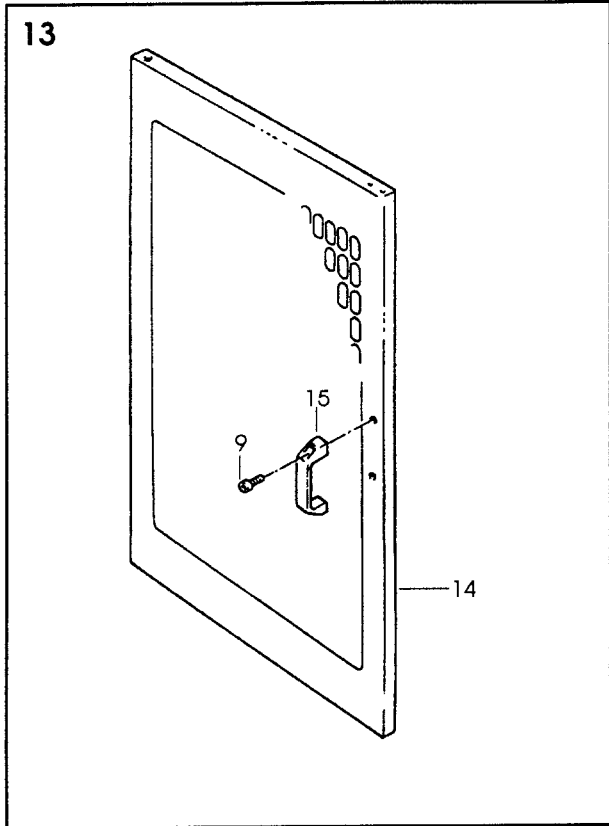


Figure 4188/2 of 2

Figure 4188 (Page 2 of 2)

Ref. No.	3M Part No.	Description
4188-19	78-8010-7209-7	Screw – Soc Hd, M6 x 12
4188-20	78-8017-9074-8	Washer – Nylon, 15 mm
4188-21	78-8091-0772-1	Panel Assembly
4188-22	78-8091-0773-9	Panel Assembly – Infeed
4188-23	26-1003-7964-8	Screw – Soc Hd Hex Soc Dr, M8 x 20
4188-24	78-8076-4930-2	Square – Support
4188-25	26-1000-0010-3	Washer – Flat, M6
4188-26	78-8076-4931-0	Drawbar – Lock
4188-27	78-8076-4932-8	Lock – Wing
4188-28	26-1005-4758-2	Screw – Flat Hd, Soc Dr, M4 x 10
4188-29	78-8005-5740-3	Washer – Plain, 4 mm
4188-30	78-8010-7416-8	Nut – Hex, M4
4188-31	78-8076-4992-2	Plate – Security Switch
4188-32	78-8076-4929-4	Security Switch – Schmersal AZ15ZVR
4188-33	26-1005-6859-6	Nut – Self-Locking , M5
4188-34	26-1003-7951-5	Screw – Soc Hd Hex Soc, M5 x 20
4188-35	78-8076-4532-6	Union
4188-36	78-8076-4645-6	Lock Nut – GMP11
4188-37	78-8114-4788-3	Plate
4188-38	26-1003-5707-3	Screw – Phillips Dr, M4 x 16

800af3 Adjustable Case Sealer

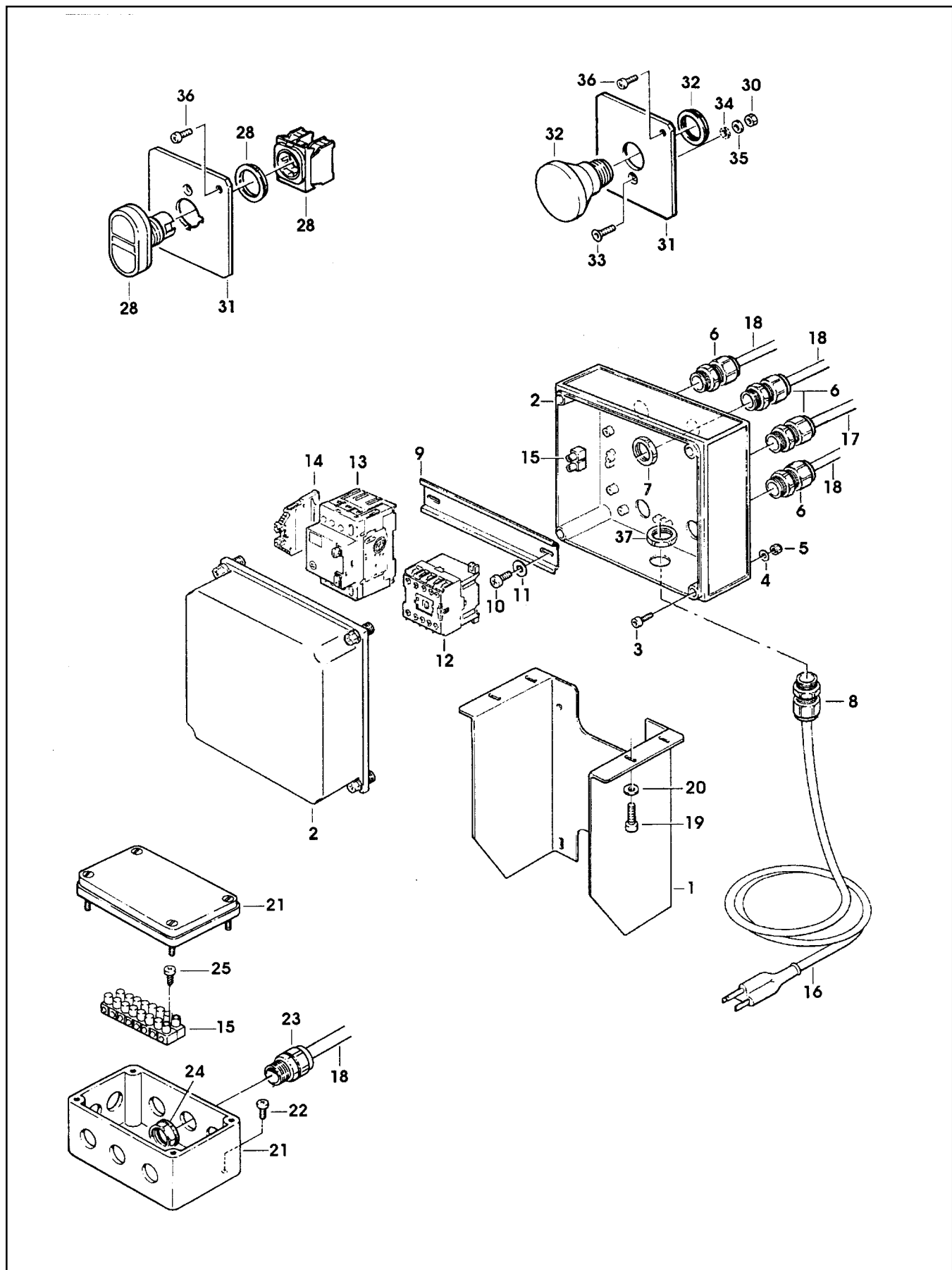


Figure 5600

Figure 5600

Ref. No.	3M Part No.	Description
5600-1	78-8094-6379-3	Support – Box
5600-2	78-8094-6380-1	Box
5600-3	78-8094-6381-9	Screw – Soc Hd, Hex Hd, M4 x 15
5600-4	78-8005-5740-3	Washer – Plain, 4 mm
5600-5	26-1003-6914-4	Nut – Plastic Insert, M4
5600-6	78-8076-4715-7	Cord Grip
5600-7	78-8076-5211-6	Set Nut – GMP 13,5
5600-8	78-8057-5807-1	Cord Grip – ST 16
5600-9	78-8094-6382-7	Guide – Mounting
5600-10	78-8028-8208-0	Screw – 6PX9,5
5600-11	78-8017-9018-5	Washer – Plain, M4 SPEC
5600-12	78-8094-6383-5	Contactor – CA-5-10, 110V, 60 HZ
5600-13	78-8076-5378-3	Switch – Thermal, KTA-3-25
5600-14	78-8094-6384-3	Clamp – VGPE 4/6
5600-15	78-8076-4968-2	Terminal
5600-16	78-8028-7909-4	Power Cord – U.S.A.
5600-17	78-8100-1038-5	Cable – 3X20 AWG, 5 MT
5600-18	78-8060-8053-3	Wire – 3-Pole, 5 Meters Length
5600-19	26-1003-7957-2	Screw – Soc Hd Hex Hd, M6 x 16
5600-20	26-1000-0010-3	Washer – Flat, M6
5600-21	78-8076-4881-7	Pull Box
5600-22	78-8060-8087-1	Screw – M5 x 10
5600-23	78-8076-4532-6	Cord Grip – ST11
5600-24	78-8076-4645-6	Lock Nut – GMP 11
5600-25	78-8091-0434-8	Screw – Self-Tapping, 4.2X19
5600-28	78-8094-6386-8	Switch – On/Off, DM3N-C-01/10
5600-30	78-8010-7417-6	Nut – Hex, M5
5600-31	78-8094-6474-2	Support – E-Stop
5600-32	78-8094-6385-0	E-Stop – 800EP-MTS643LX01
5600-33	26-1005-5316-8	Screw – Flat Hd Hex Dr, M5 x 16
5600-34	78-8046-8217-3	Washer – Special
5600-35	78-8005-5741-1	Washer – Flat, M5
5600-36	26-1003-5707-3	Screw – Phillips Dr, M4 x 16
5600-37	78-8100-1202-7	Lock Nut – GMP 16

800af3 Adjustable Case Sealer

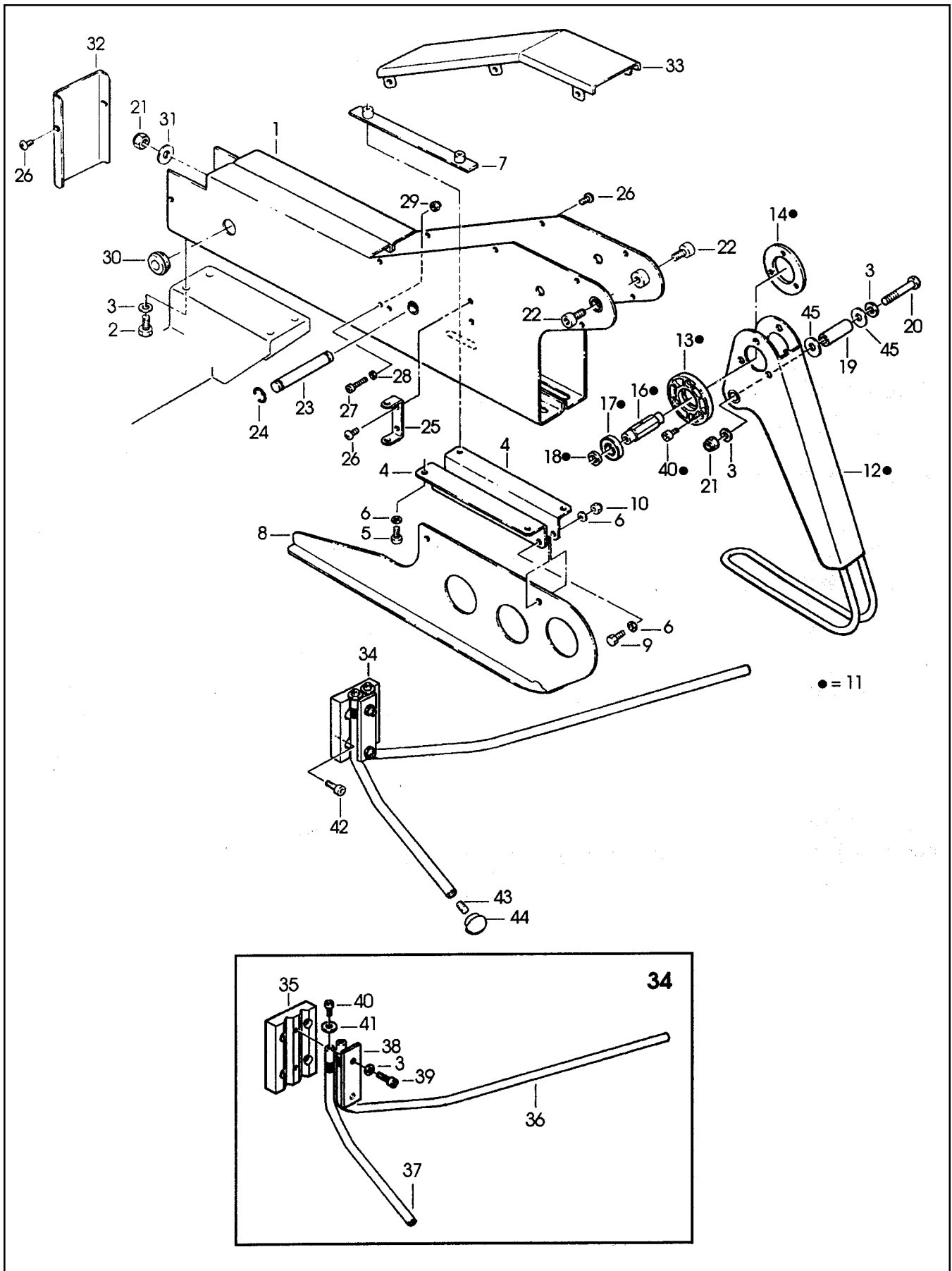


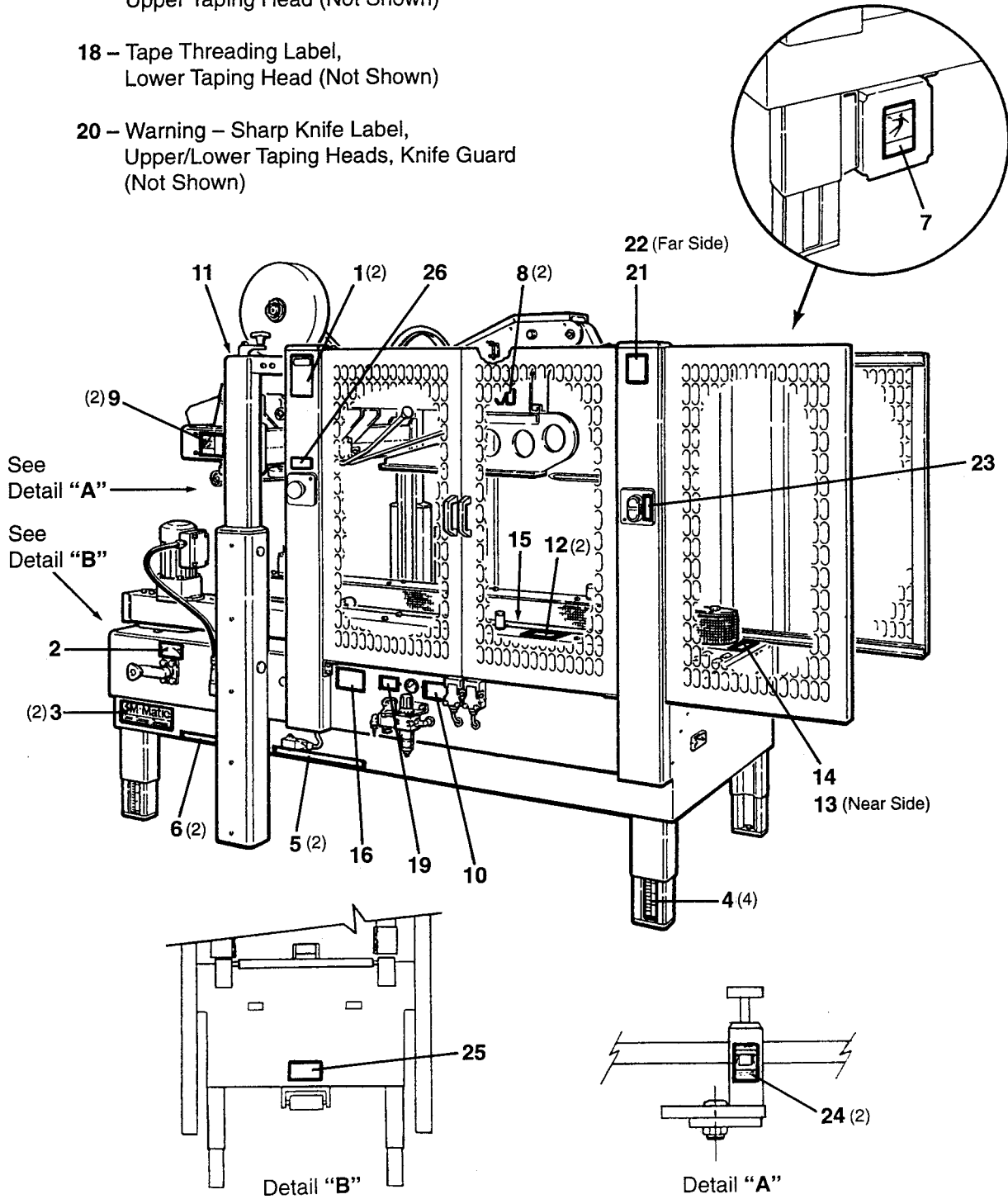
Figure 6419

Figure 6419

Ref. No.	3M Part No.	Description
6419-1	78-8091-0739-0	Support – Front Flap Folder
6419-2	78-8017-9301-5	Screw – Hex Hd, M8 x 25
6419-3	78-8017-9318-9	Washer – Plain, 8 mm
6419-4	78-8076-4832-0	Plate – Box Guide
6419-5	78-8010-7210-5	Screw – Soc Hd Hex Soc, M6 x 20
6419-6	26-1000-0010-3	Washer – Flat, M6
6419-7	78-8076-4833-8	Strap
6419-8	78-8114-4706-5	Flap Folder – Front
6419-9	78-8032-0375-7	Screw – Hex Hd, M6 x 16
6419-10	26-1003-6916-9	Nut – Locking, Plastic Insert, M6
6419-11	78-8114-4707-3	Flap Folder Assembly – Rear
6419-12	78-8114-4708-1	Flap Folder – Rear
6419-13	78-8114-4709-9	Support – Bearing
6419-14	78-8114-4710-7	Washer – Support
6419-16	78-8114-4711-5	Shaft – Support, Hex
6419-17	26-1000-4350-9	Bearing – 6002-2RS
6419-18	78-8114-4712-3	Spacer – Bearing
6419-19	78-8114-4695-0	Spacer – Cylinder
6419-20	26-1002-5949-3	Screw – Hex Hd, M8 x 60
6419-21	78-8017-9313-0	Nut – Self-Locking, M8
6419-22	26-1003-7964-8	Screw – Soc Hd Hex Soc Dr, M8 x 20
6419-23	78-8076-4831-2	Pin – Air Cylinder
6419-24	78-8056-3965-1	Ring – 8 DIN 6799
6419-25	78-8091-0740-8	Holder – Hex Wrench
6419-26	78-8060-8087-1	Screw – M5 x 10
6419-27	26-1003-7947-3	Screw – Soc Hd Hex Soc, M4 x 35
6419-28	78-8005-5740-3	Washer – Plain, 4 mm
6419-29	26-1003-6914-4	Nut – Plastic Insert, M4
6419-30	78-8060-7785-1	Fairlead – /22
6419-31	26-1004-5507-5	Washer – M8
6419-32	78-8076-4830-4	Cover – Flap Folder Support
6419-33	78-8076-4840-3	Cover
6419-34	78-8114-4713-1	Flap Folder Assembly – Side
6419-35	78-8114-4791-7	Block – Side Flap Folder
6419-36	78-8114-4714-9	Side Flap Folder – R/H
6419-37	78-8114-4715-6	Side Flap Folder – L/H
6419-38	78-8114-4792-5	Plate – Side Flap Folder
6419-39	78-8060-7895-8	Screw – M8 x 35
6419-40	78-8010-7209-7	Screw – Soc Hd, M6 x 12
6419-41	78-8042-2919-9	Washer – Triple, M6
6419-42	26-1003-7965-5	Screw – Soc Hd Hex Soc, M8 x 25
6419-43	78-8060-7863-6	Grain – M6 x 20
6419-44	78-8076-4546-6	Knob
6419-45	78-8017-9059-9	Washer – Flat For M12 Screw

800af3 Adjustable Case Sealer

- 17 – Tape Threading Label, Upper Taping Head (Not Shown)
- 18 – Tape Threading Label, Lower Taping Head (Not Shown)
- 20 – Warning – Sharp Knife Label, Upper/Lower Taping Heads, Knife Guard (Not Shown)



Safety and Information Labels

Safety and Information Labels

A label kit, part number 78-8113-6881-6, is available as a stock item. It contains all the safety and information labels used on the case sealer, or labels can be ordered separately from the following list.

Ref. No.	3M Part No.	Description	Qty.
1	78-8070-1621-3	Label – Safety Instructions	2
2	78-8070-1622-1	Label – In/Out	1
3	78-8062-4266-1	Label – 3M-Matic	2
4	78-8060-8481-6	Label – Leg Height	4
5	78-8070-1623-9	Label – Permissible Lift Area	2
6	78-8070-1624-7	Label – Permissible Lift Area	2
7	78-8070-1329-3	Label – Warning Hazardous Voltage	1
8	78-8070-1626-2	Label – 3M	2
9	78-8070-1336-8	Label – Warning, Sharp Knife	2
10	78-8113-6750-3	Label – Air Pressure, 95 PSI Maximum	1
11	78-8070-1628-8	Label – Up, Down, Lock	1
12	78-8070-1629-6	Label – Belt Tensioning	2
13	78-8070-1331-9	Label – Warning, Moving Belts	1
14	78-8070-1330-1	Label – Warning, Moving Belts	1
15	78-8070-1630-4	Label – Cam	1
16	78-8070-1631-2	Label – Lifting Notice	1
17	78-8070-1365-7	Label – Tape Threading, Upper	1
18	78-8070-1364-0	Label – Tape Threading, Lower	1
19	78-8111-1496-2	Label – Air Pressure	1
20	78-8070-1335-0	Label – Warning, Sharp Knife	2
21	78-8113-6882-4	Label – Warning, Flap Kicker, L/H	1
22	78-8113-6883-2	Label – Warning, Flap Kicker, R/H	1
23	78-8113-6775-0	Label – Electrical On/Off	1
24	78-8113-6912-9	Label – Caution, Pinch Point	2
25	78-8095-1049-4	Label – Tape Threading	1
26	78-8095-1141-9	Label – Stop	2