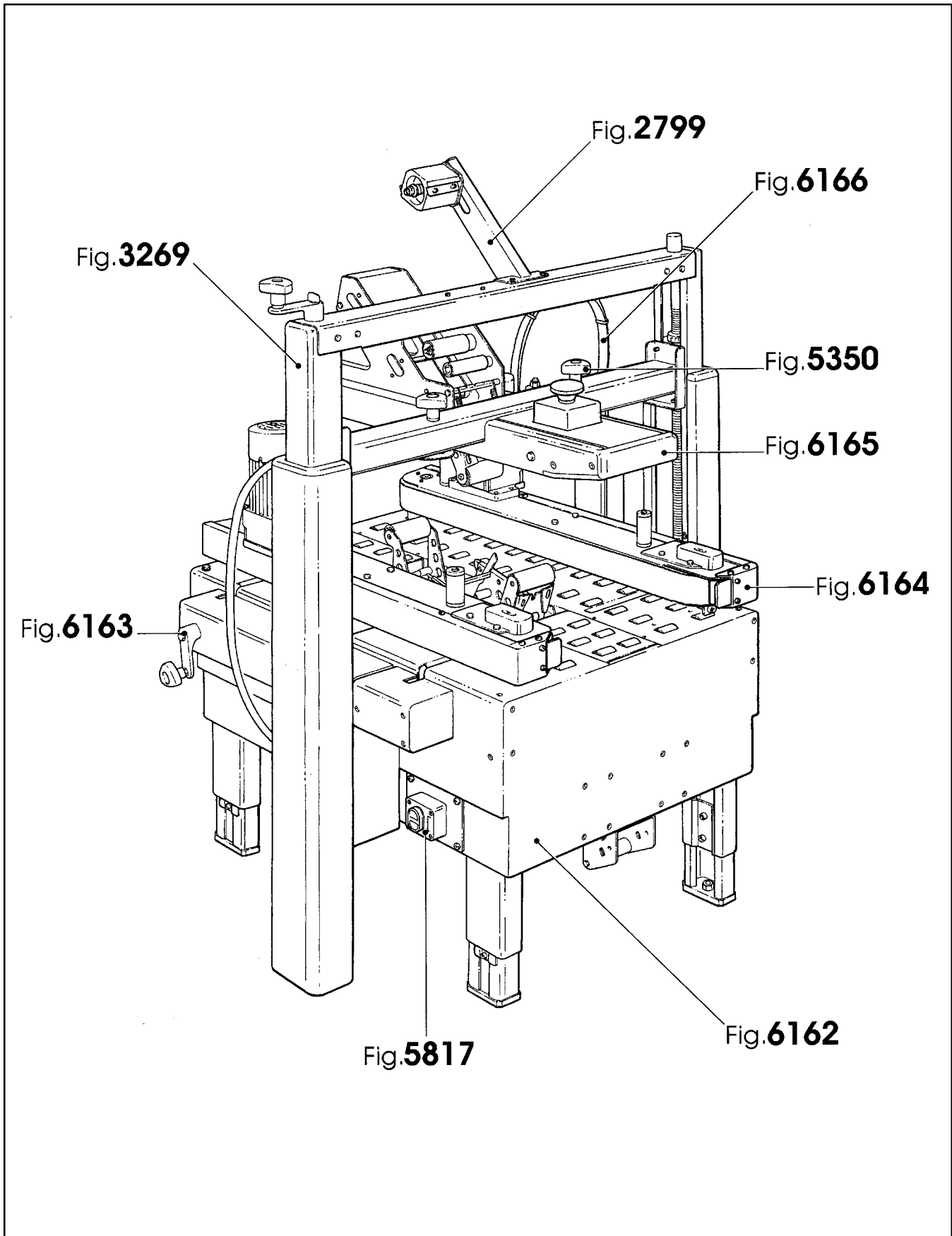


800a Adjustable Case Sealer W/AccuGlide™ II STD (2 Inch) Taping Heads



800a Assembly

800a Adjustable Case Sealer

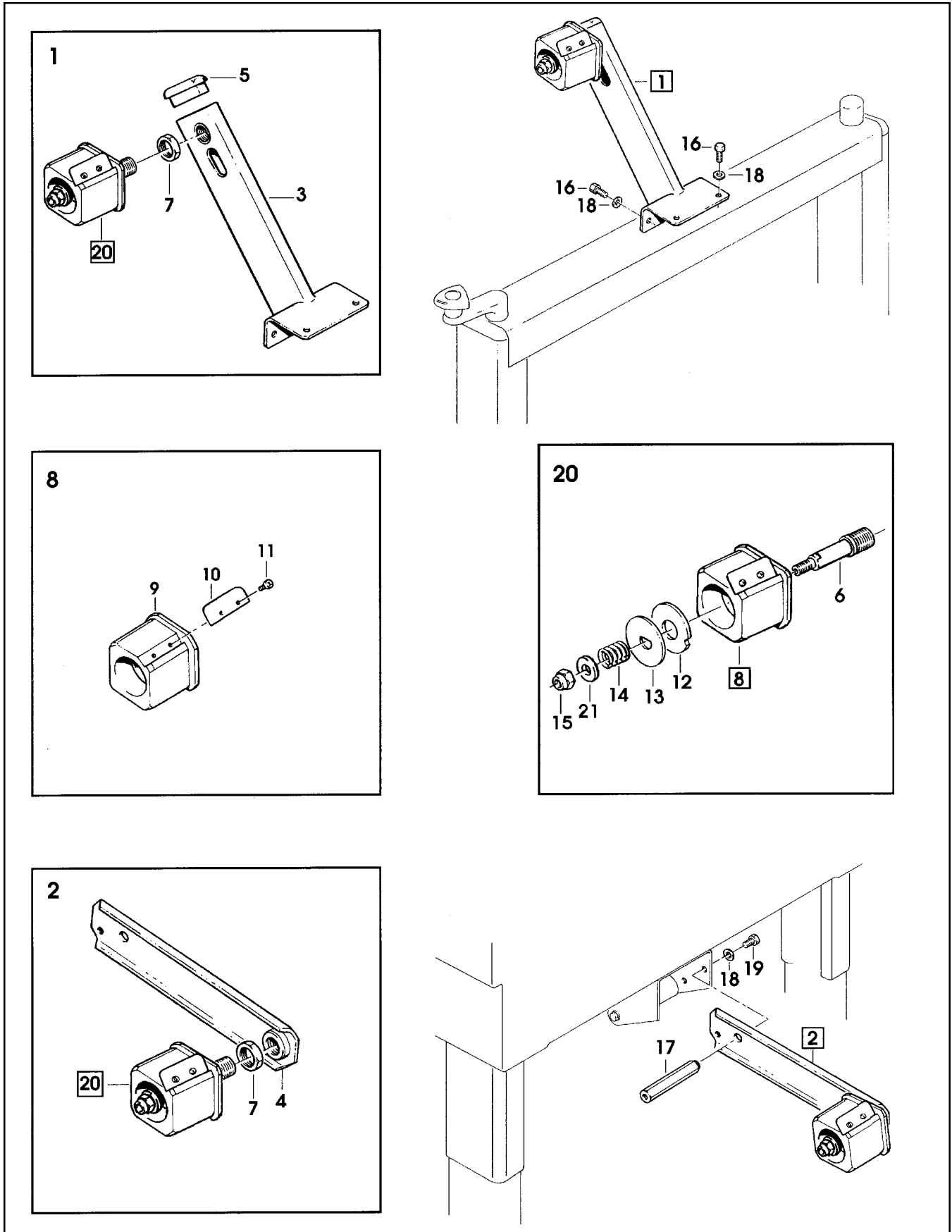


Figure 2799

Figure 2799

Ref. No.	3M Part No.	Description
2799-1	78-8070-1564-5	Tape Drum Bracket Assembly
2799-2	78-8070-1565-2	Tape Drum Bracket Assembly
2799-3	78-8070-1566-0	Bracket – Tape Drum
2799-4	78-8070-1395-4	Bracket – Bushing Assembly
2799-5	78-8070-1568-6	Cap – Bracket
2799-6	78-8076-4519-3	Shaft – Tape Drum
2799-7	78-8017-9169-6	Nut – M18 x 1
2799-8	78-8070-1569-4	Tape Drum Assembly – 2 Inch Wide
2799-9	78-8052-6749-5	Tape Drum Assembly
2799-10	78-8052-6268-6	Leaf Spring
2799-11	26-1002-5753-9	Screw – Self-Tapping
2799-12	78-8060-8172-1	Washer – Friction
2799-13	78-8052-6271-0	Washer – Tape Drum
2799-14	78-8100-1048-4	Spring – Core Holder
2799-15	78-8017-9077-1	Nut – Self-Locking, M10 x 1
2799-16	78-8032-0375-7	Screw – Hex Hd, M6 x 16
2799-17	78-8070-1215-4	Spacer – Stud
2799-18	26-1000-0010-3	Washer – Flat M6
2799-19	78-8010-7169-3	Screw – Hex Hd, M6 x 12
2799-20	78-8060-8474-1	Tape Drum Assembly – 2 Inch Head
2799-21	78-8052-6566-3	Washer – Friction

800a Adjustable Case Sealer

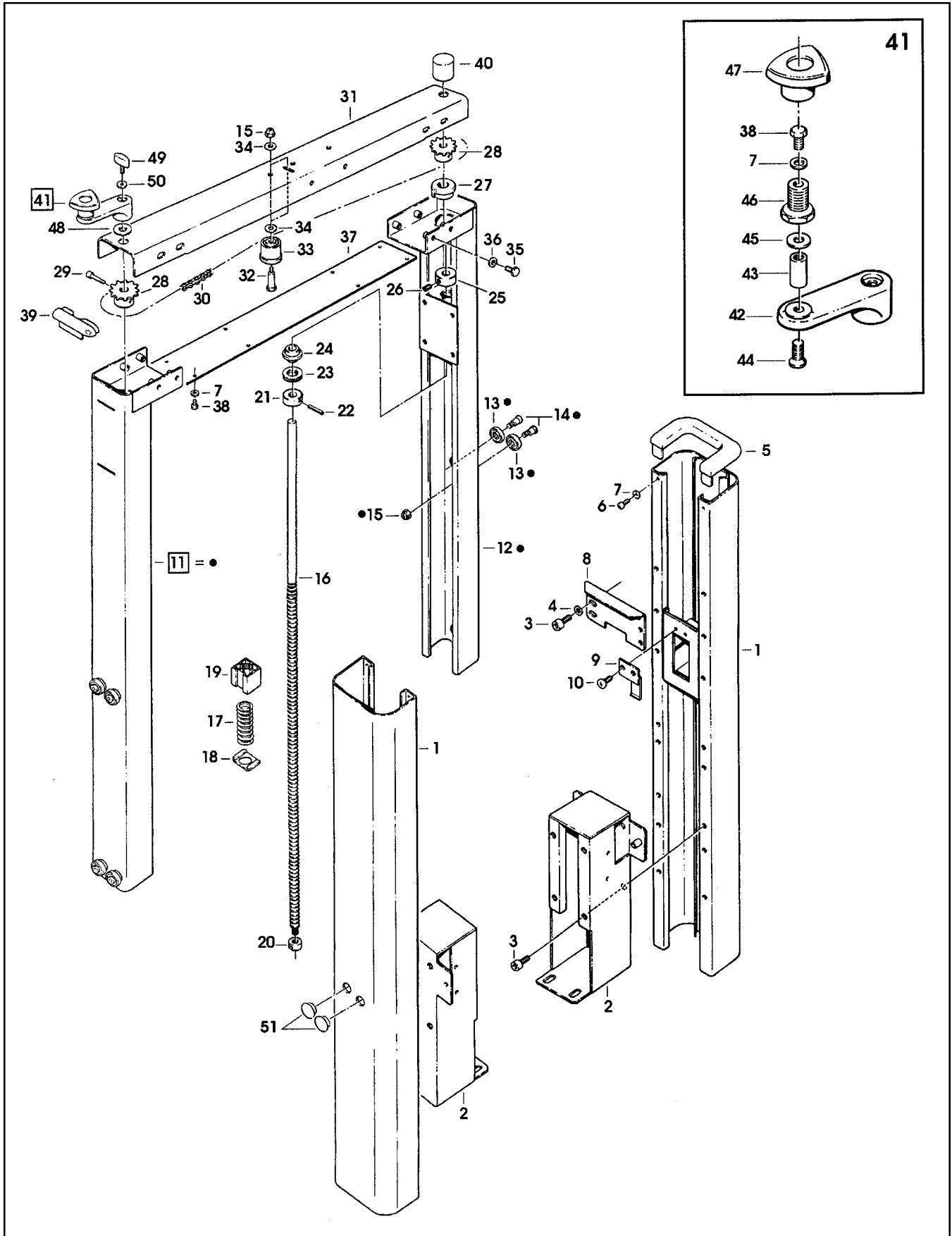


Figure 3269

Figure 3269

Ref. No.	3M Part No.	Description
3269-1	78-8060-8489-9	Column – Outer
3269-2	78-8076-5426-0	Plate
3269-3	26-1003-7964-8	Screw – Soc Hd, M8 x 20
3269-4	78-8017-9318-9	Washer – Plain 8 mm
3269-5	78-8060-8491-5	Cap – Column
3269-6	26-1002-4955-1	Screw – Self-Tap, 8P x 13
3269-7	78-8005-5740-3	Washer – Plain 4 mm
3269-8	78-8060-8492-3	Stop – Height
3269-9	78-8076-5482-3	Plate – Nut Stop
3269-10	78-8060-8087-1	Screw – M5 x 10
3269-11	78-8060-8494-9	Column Assembly – Inner
3269-12	78-8060-8495-6	Column – Inner
3269-13	78-8054-8617-8	Bearing – Special
3269-14	78-8054-8589-9	Screw – Special
3260-15	26-1003-6916-9	Nut – Locking, M6, Plastic Insert
3269-16	78-8060-8496-4	Lead Screw
3269-17	78-8054-8969-3	Spring
3269-18	78-8054-8970-1	Bed Plate For Spring
3269-19	78-8054-8571-7	Nut – Plastic
3269-20	78-8054-8968-5	Nut – Special
3269-21	78-8054-8585-7	Collar
3269-22	78-8054-8586-5	Pin
3269-23	78-8054-8584-0	Spacer
3269-24	78-8054-8583-2	Bushing
3269-25	78-8060-8497-2	Bushing – Lead Screw
3269-26	78-8059-5617-0	Set Screw – M6 x 8
3269-27	78-8060-8498-0	Bushing – Inner Column
3269-28	78-8060-8499-8	Sprocket – 3/8 Inch, Z=13
3269-29	26-1003-7946-5	Screw – Soc Hd, M4 x 25
3269-30	78-8076-4818-9	Chain – 3/8 Inch, Pitch 197
3269-31	78-8113-6803-0	Housing – Chain, W/English Language Label
3269-32	78-8060-7878-4	Idler Screw
3269-33	78-8070-1503-3	Roller – Chain Tensioning
3269-34	78-8042-2919-9	Washer – Triple, M6
3269-35	26-1003-5829-5	Screw – Hex Hd, M6 x 12
3269-36	26-1000-0010-3	Washer – Flat M6
3269-37	78-8076-5428-6	Cover
3269-38	78-8010-7157-8	Screw – Hex Hd, M4 x 10
3269-39	78-8070-1505-8	Cap – Inner Column
3269-40	78-8070-1506-6	Cover – Screw
3269-41	78-8076-4807-2	Crank Assembly
3269-42	78-8076-5422-9	Crank
3269-43	78-8070-1509-0	Shaft – Crank
3269-44	26-1005-5316-8	Screw – Flat Hd Hex Dr, M5 x 16
3269-45	78-8070-1510-8	Washer – Nylon, 7 x 15 x 1
3269-46	78-8070-1511-6	Bushing
3269-47	78-8070-1512-4	Knob – VTR-B-M12
3269-48	78-8076-4800-7	Washer – Crank
3269-49	78-8076-4821-3	Key – Stop
3269-50	78-8076-4809-8	Washer – Crank
3269-51	78-8054-8821-6	End – Cap

800a Adjustable Case Sealer

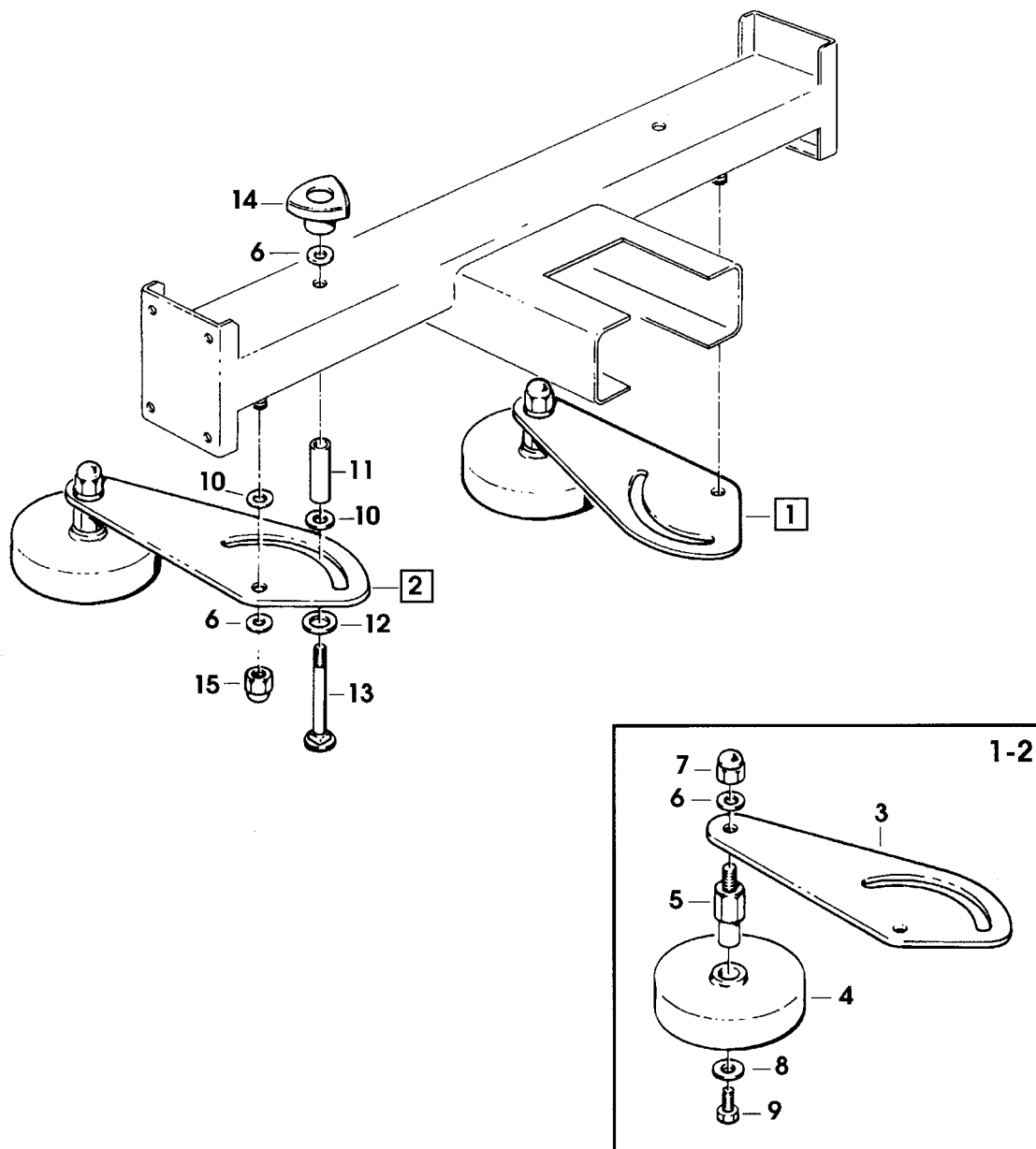


Figure 5350

Figure 5350

Ref. No.	3M Part No.	Description
5350-1	78-8100-0876-9	Compression Roller Assembly – R/H
5350-2	78-8100-0877-7	Compression Roller Assembly – L/H
5350-3	78-8070-1559-5	Support – Compression Roller
5350-4	78-8054-8974-3	Pressure Roller
5350-5	78-8070-1560-3	Stud – Roller Mounting
5350-6	78-8052-6566-3	Washer – Friction
5350-7	78-8070-1561-1	Nut – M10
5350-8	26-1004-5507-5	Washer – M8
5350-9	26-1003-5841-0	Screw – M8 x 16
5350-10	78-8017-9074-8	Washer – Nylon, 15 mm
5350-11	78-8070-1562-9	Tube – Roller Support
5350-12	12-7991-1752-3	Washer – Plain, M14
5350-13	78-8070-1563-7	Screw – M10 x 80
5350-14	78-8070-1549-6	Knob – VTR-B-M10
5350-15	26-1003-6918-5	Nut – Plastic Insert, M10 Hex Flange

800a Adjustable Case Sealer

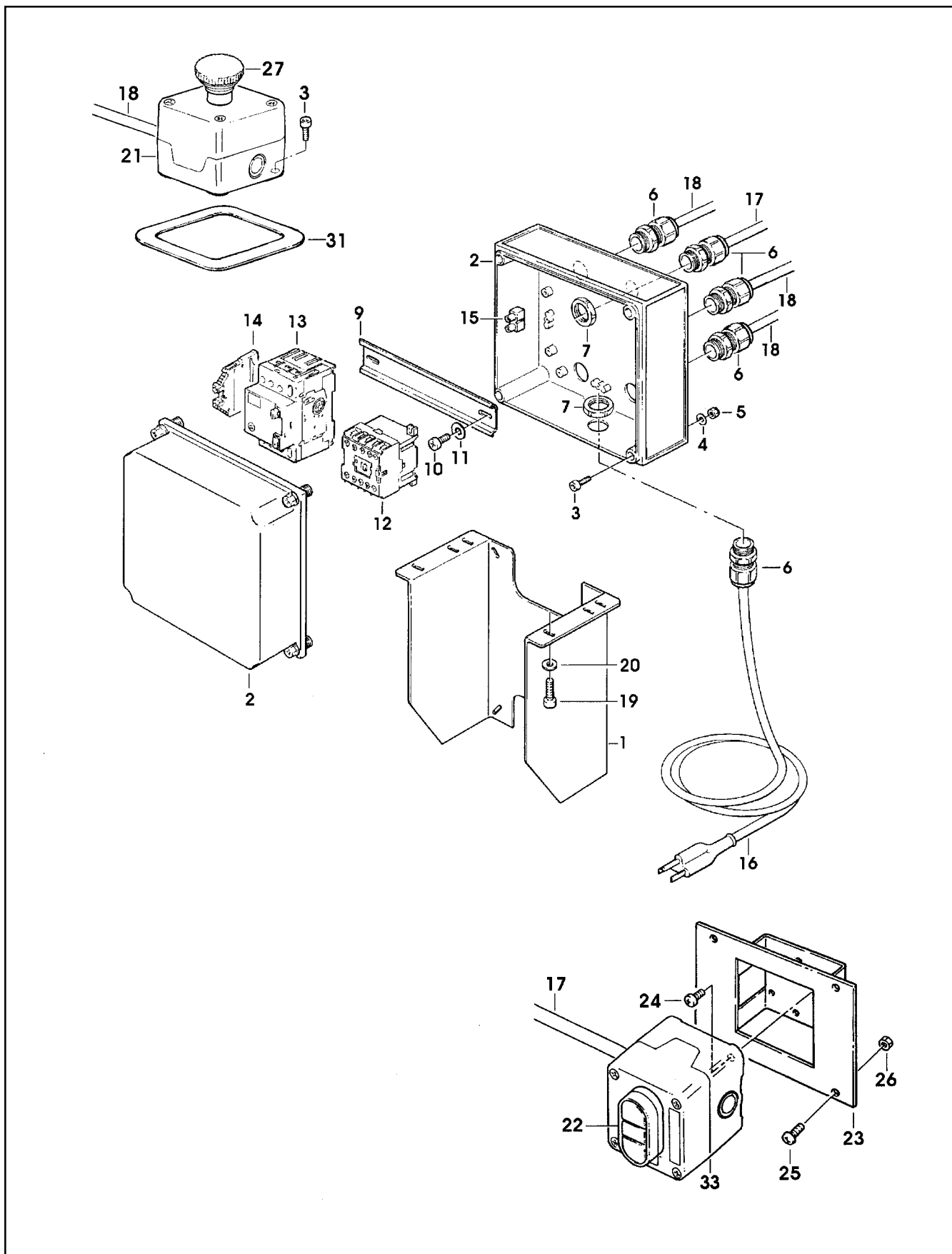


Figure 5817

Figure 5817

Ref. No.	3M Part No.	Description
5817-1	78-8094-6379-3	Support – Box
5817-2	78-8113-6759-4	Box – W/English Language Label
5817-3	78-8094-6381-9	Screw – Soc Hd, Hex Hd, M4 x 15
5817-4	78-8005-5740-3	Washer – Plain, 4 mm
5817-5	26-1003-6914-4	Nut – Plastic Insert, M4
5817-6	78-8076-4715-7	Cord Grip
5817-7	78-8076-5211-6	Set Nut – GMP 13.5
5817-9	78-8094-6382-7	Guide – Mounting
5817-10	78-8028-8208-0	Screw – 6P x 9,5
5817-11	78-8017-9018-5	Washer – Plain, M4
5817-12	78-8094-6383-5	Contactora – Sprecher and Schuh, CA-5-10, 110V, 60HZ
5817-13	78-8076-5378-3	Circuit Breaker – Sprecher and Schuh, KTA-3-25
5817-14	78-8094-6384-3	Clamp – VGPE 4/6
5817-15	78-8076-4968-2	Terminal
5817-16	78-8028-7909-4	Power Cord U.S.A.
5817-17	78-8100-1038-5	Cable – 3 x 20 AWG, 5 MT
5817-18	78-8060-8053-3	Wire – 3-Pole, 5 Meters Length
5817-19	26-1003-7957-2	Screw – Soc Hd, Hex Hd, M6 x 16
5817-20	26-1000-0010-3	Washer – Flat, M6
5817-21	78-8076-5194-4	Box – E-Stop
5817-22	78-8094-6386-8	Switch – On/Off, Sprecher and Schuh, DM3N-C-01/10
5817-23	78-8100-1039-3	Support – On/Off Switch
5817-24	78-8017-9257-9	Screw – Phillis Hd, M4 x 10
5817-25	78-8060-8087-1	Screw – M5 x 10
5817-26	78-8010-7417-6	Nut – Hex, M5
5817-27	26-1014-5845-8	E-Stop – W/Latch and Contact Block, 800EM-MTS44-3LX01
5817-31	78-8100-1234-0	Collar
5817-33	78-8114-4896-4	Box – On/Off, Grey

800a Adjustable Case Sealer

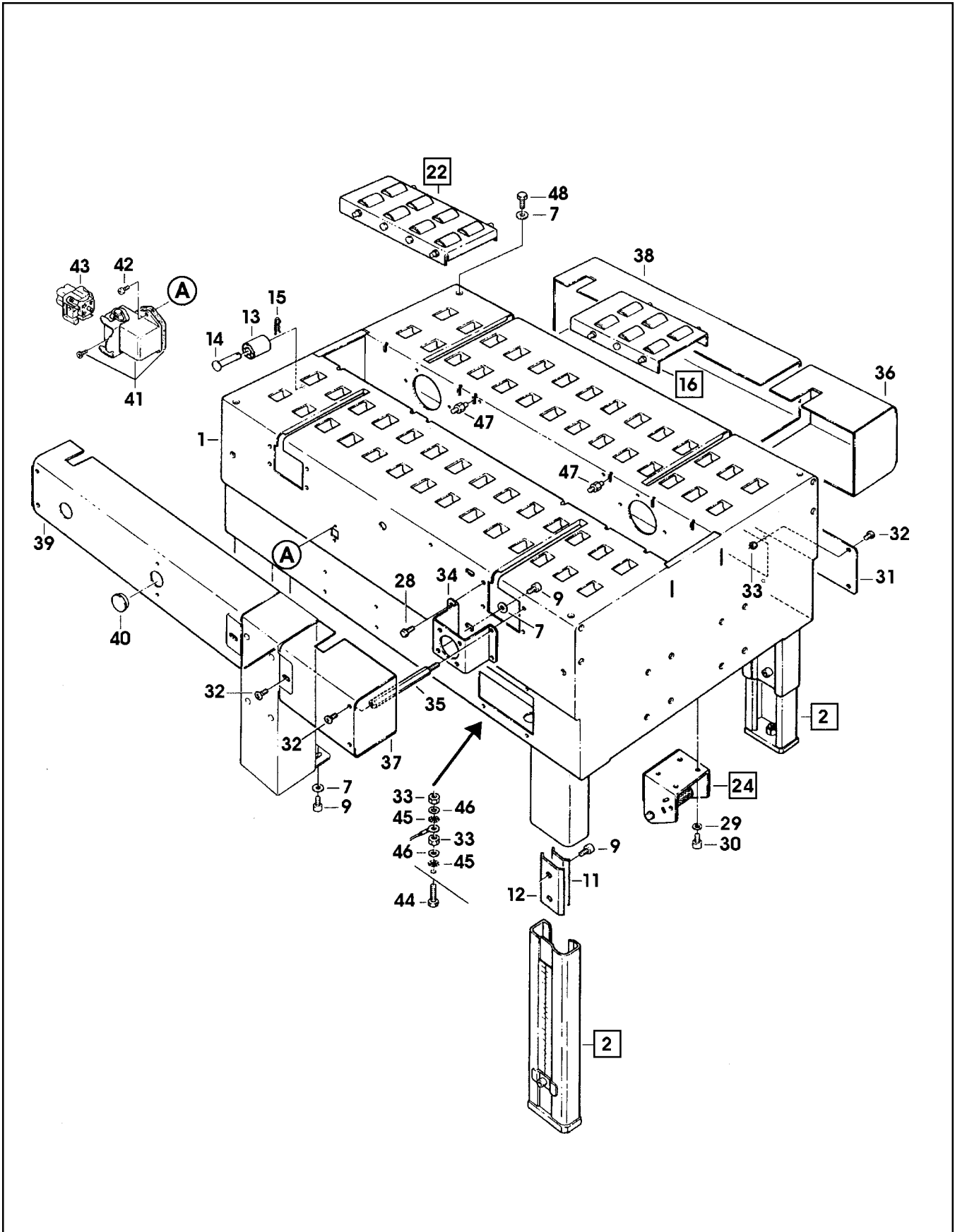


Figure 6162/1 of 2

Figure 6162 (page 1 of 2)

Ref. No.	3M Part No.	Description
6162-1	78-8076-5380-9	Bed – Conveyor
6162-2	78-8076-5381-7	Leg Assembly – Inner, W/Stop
6162-3	78-8076-5382-5	Leg – Inner
6162-4	78-8060-8480-8	Pad – Foot
6162-5	78-8055-0867-4	Screw – Hex Hd, M8 x 30
6162-6	78-8017-9313-0	Nut – Self-Locking, M8
6162-7	78-8017-9318-9	Washer – Plain 8 mm
6162-8	78-8076-5383-3	Stop – Leg
6162-9	26-1003-7963-0	Screw – Soc Hd, M8 x 16
6162-10	78-8060-8481-6	Label – Height
6162-11	78-8052-6676-0	Clamp – Outer
6162-12	78-8052-6677-8	Clamp – Inner
6162-13	78-8060-7693-7	Roller – 32 x 38
6162-14	78-8076-5384-1	Shaft – Roller
6162-15	78-8076-5385-8	Spring
6162-16	78-8094-6100-3	Conveyor Assembly – Front
6162-17	78-8076-5387-4	Conveyor – Front
6162-18	78-8091-0780-4	Shaft – Central Roller
6162-19	78-8091-0781-2	Shaft – Side Roller
6162-20	26-1003-5828-7	Screw – Hex Hd, M6 x 10
6162-21	78-8076-5389-0	Mounting – Conveyor
6162-22	78-8094-6101-1	Conveyor Assembly – Rear
6162-23	78-8076-5391-6	Conveyor – Rear
6162-24	78-8076-5392-4	Support – Tape Drum
6162-25	78-8060-8483-2	Support – Outboard Roll Mount
6162-26	78-8060-8484-0	Shaft – Roller
6162-27	78-8060-8485-7	Roller

800a Adjustable Case Sealer

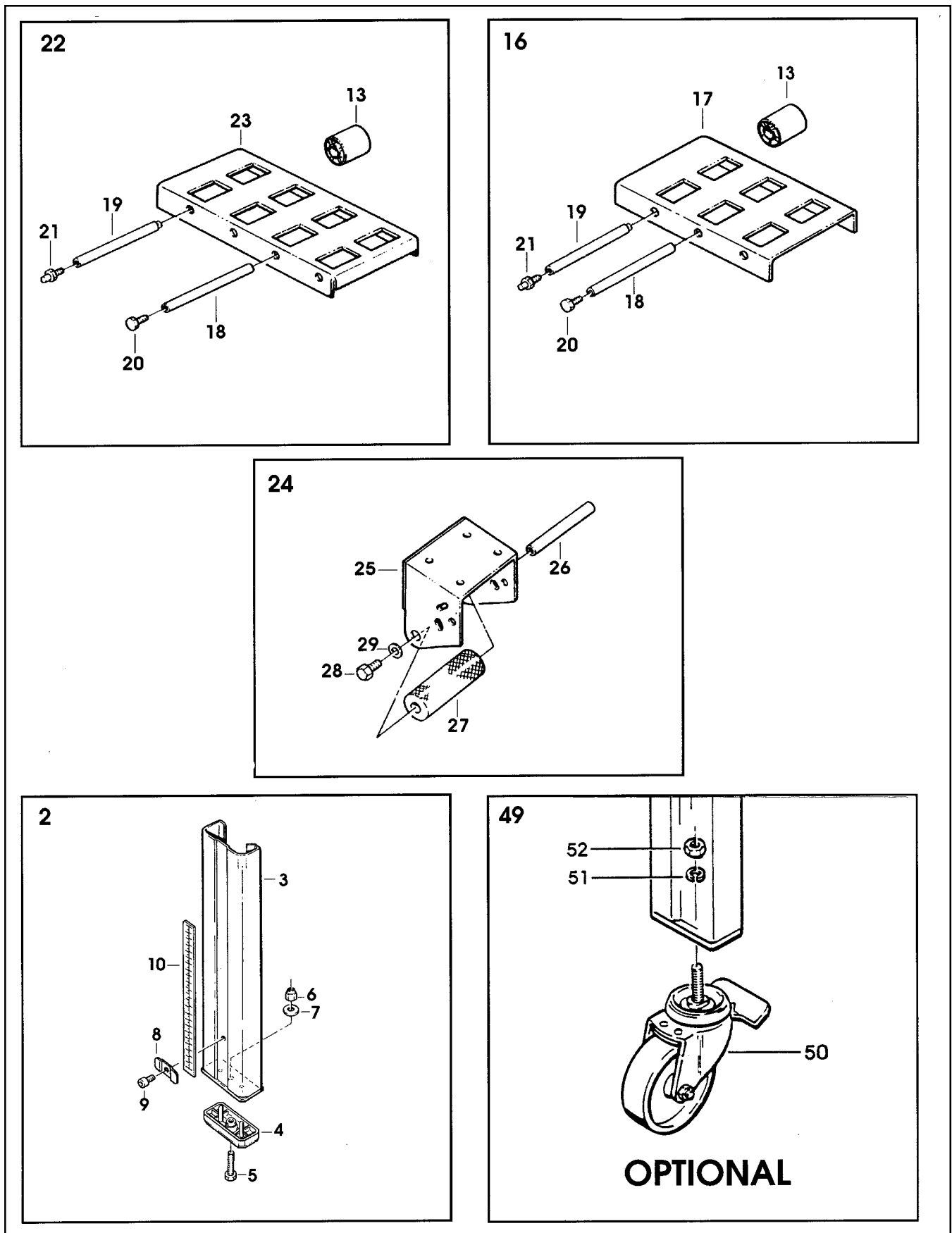


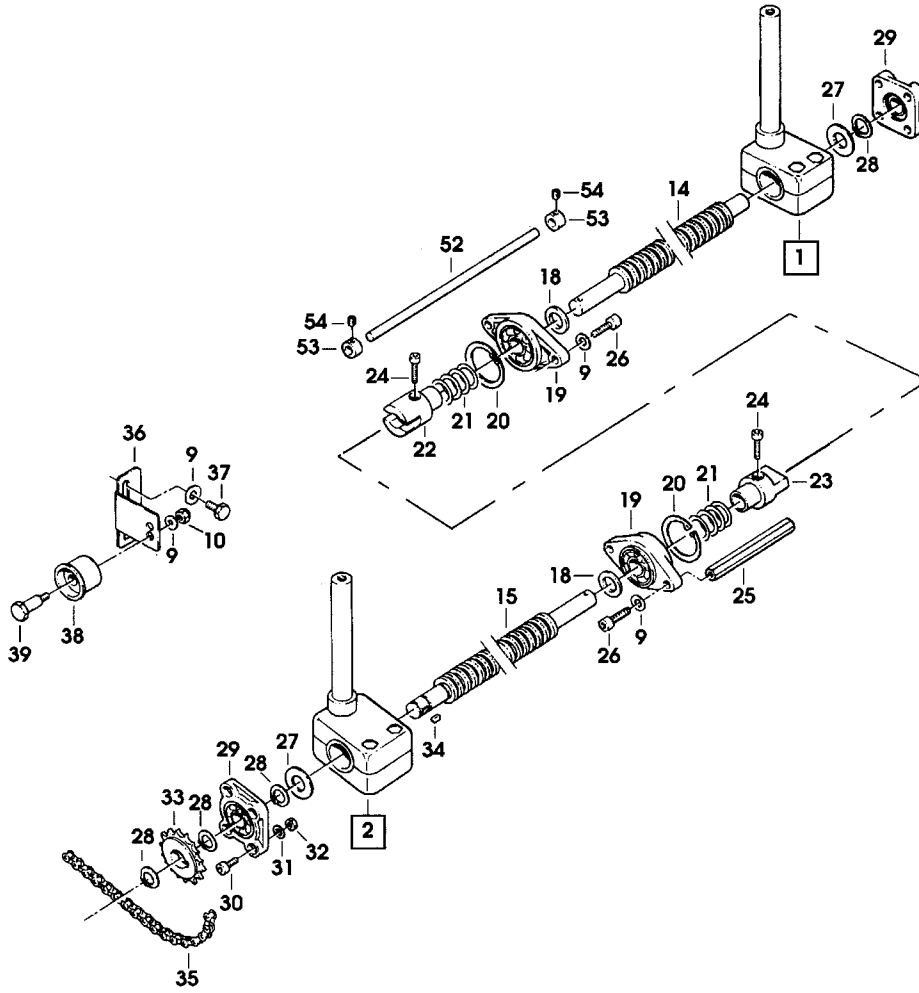
Figure 6162/2 of 2

Figure 6162 (page 2 of 2)

Ref. No.	3M Part No.	Description
6162-28	78-8032-0375-7	Screw – Hex Hd, M6 x 16
6162-29	26-1000-0010-3	Washer – Flat M6
6162-30	26-1003-7957-2	Screw – Soc Hd Hex Hd, M6 x 16
6162-31	78-8060-8487-3	Cover – Switch
6162-32	78-8060-8087-1	Screw – M5 x 10
6162-33	78-8010-7417-6	Nut – Hex M5
6162-34	78-8076-5393-2	Plate – Tape Bracket Support
6162-35	78-8076-5394-0	Spacer
6162-36	78-8076-5395-7	Cover – Side, Front, R/H
6162-37	78-8076-5396-5	Cover – Side, Front, L/H
6162-38	78-8100-1203-5	Cover – Side, Rear, R/H
6162-39	78-8113-6813-9	Cover – Side, Rear, L/H, W/English Language Label
6162-40	78-8076-4517-7	End Cap – /22 x 1
6162-41	78-8060-7876-8	Cover – Plug Lateral
6162-42	78-8028-8208-0	Screw – 6P x 9,5
6162-43	78-8060-7873-5	Plug – Female
6162-44	78-8060-8488-1	Screw – Hex Hd, M5 x 20
6162-45	78-8046-8217-3	Washer – Special
6162-46	78-8005-5741-1	Washer – Plain M5
6162-47	78-8076-4991-4	Spacer
6162-48	26-1003-5841-0	Screw – M8 x 16
6162-49	78-8098-9076-3	Caster Assembly
6162-50	26-1009-9096-4	Caster – Dual Locking
6162-51	26-1009-9094-9	Washer – Spring, Helical, M12
6162-52	26-1009-9095-6	Nut – M12

800a Adjustable Case Sealer

FRONT



• = Pos.3 and 4
to be ordered
always together

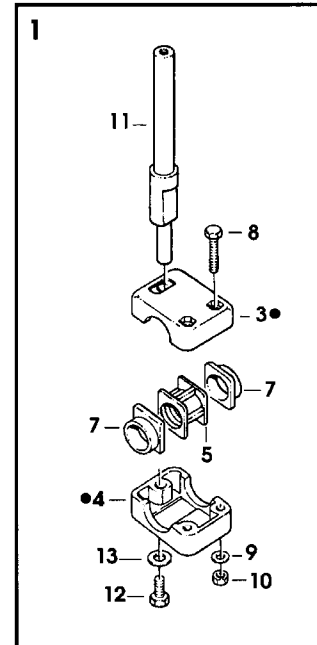
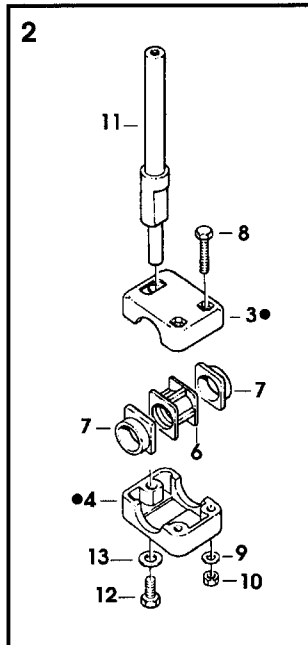


Figure 6163/1 of 2

Figure 6163 (page 1 of 2)

Ref. No.	3M Part No.	Description
6163-1	78-8100-1229-0	Shaft Assembly – Drive R/H
6163-2	78-8100-1230-8	Shaft Assembly – Drive L/H
6163-3	78-8076-5401-3	Block – Upper
6163-4	78-8076-5402-1	Block – Lower
6163-5	78-8076-5403-9	Nut – Block, R/H
6163-6	78-8076-5404-7	Nut – Block, L/H
6163-7	78-8076-5405-4	Bushing – Block
6163-8	78-8076-5239-7	Screw – Hex Hd, M6 x 50
6163-9	26-1000-0010-3	Washer – Flat M6
6163-10	26-1003-6916-9	Nut – Locking, Plastic Insert M6
6163-11	78-8100-1220-9	Shaft – Drive Mount
6163-12	26-1003-5842-8	Screw – Hex Hd, M8 x 20
6163-13	78-8005-5736-1	Lockwasher – For M8 Screw
6163-14	78-8076-5407-0	Screw – R/H
6163-15	78-8076-5408-8	Screw – L/H
6163-16	78-8076-5409-6	Screw – Handle, R/H
6163-17	78-8076-5410-4	Screw – Handle, L/H
6163-18	78-8076-5411-2	Spacer – Screw
6163-19	78-8076-5412-0	Flange – W/Bearing
6163-20	78-8060-8010-3	Snap Ring – 42 mm Shaft
6163-21	78-8076-5413-8	Spring
6163-22	78-8076-5414-6	Coupling – Screw, Female
6163-23	78-8076-5415-3	Coupling – Screw, Male
6163-24	26-1003-7946-5	Screw – Soc Hd, M4 x 25
6163-25	78-8076-5416-1	Spacer – Hex, 10 x 107
6163-26	78-8023-2334-1	Screw – Soc Hd, Hex Soc, M6 x 25
6163-27	78-8076-5417-9	Spacer

800a Adjustable Case Sealer

REAR

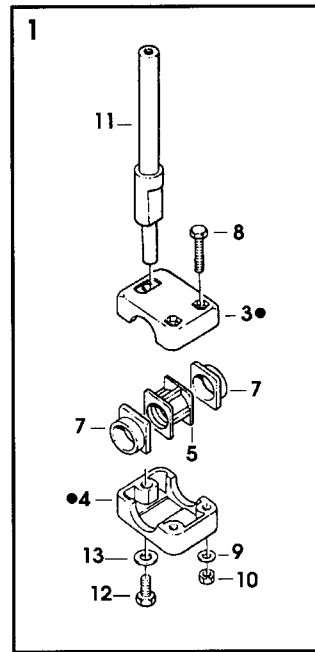
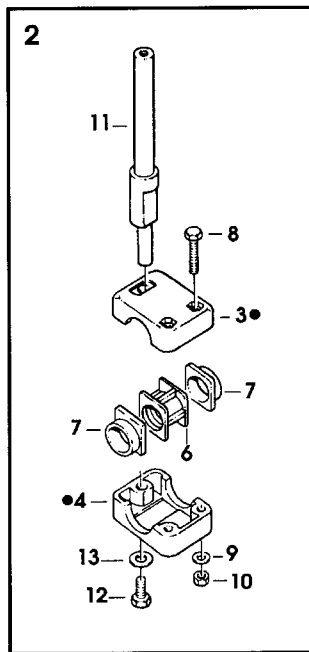
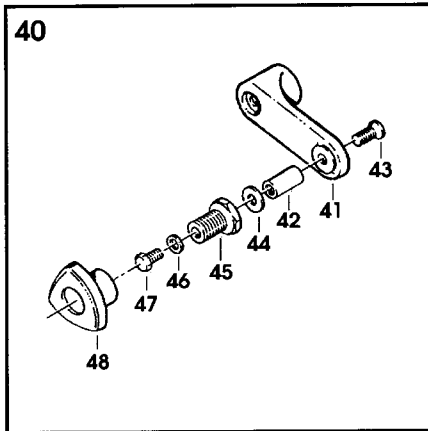
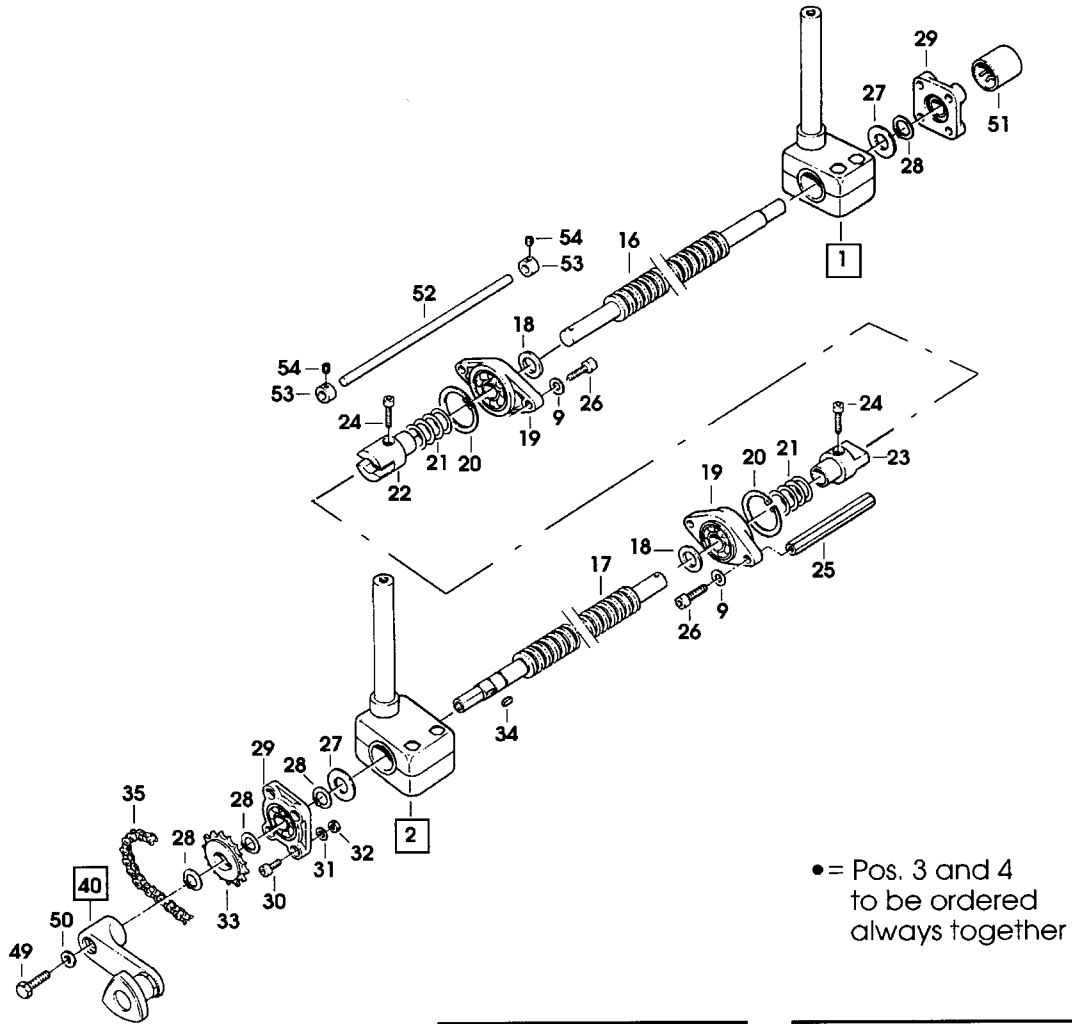


Figure 6163/2 of 2

Figure 6163 (page 2 of 2)

Ref. No.	3M Part No.	Description
6163-28	78-8017-9079-7	Ring – Snap For 15 mm Shaft
6163-29	78-8076-5418-7	Support – Screw
6163-30	26-1003-7949-9	Screw – Soc Hd Hex Soc, M5 x 12
6163-31	78-8005-5741-1	Washer – Plain M5
6163-32	78-8010-7417-6	Nut – Hex M5
6163-33	78-8076-5419-5	Sprocket – 3/8 Inch Z=16
6163-34	78-8046-8135-7	Key – 5 x 5, 12 mm
6163-35	78-8076-5420-3	Chain – 3/8 Inch, 133 Links
6163-36	78-8076-5421-1	Support – Tension Roller
6163-37	78-8010-7169-3	Screw – Hex Hd, M6 x 12
6163-38	78-8070-1503-3	Roller – Chain Tensioning
6163-39	78-8060-7878-4	Idler Screw
6163-40	78-8076-4807-2	Crank Assembly
6163-41	78-8076-5422-9	Crank
6163-42	78-8070-1509-0	Shaft – Crank
6163-43	26-1005-5316-8	Screw – Flat Hd Hex Dr, M5 x 16
6163-44	78-8070-1510-8	Washer – Nylon, 7 x 15 x 1
6163-45	78-8070-1511-6	Bushing
6163-46	78-8005-5740-3	Washer – Plain 4 mm
6163-47	78-8010-7157-8	Screw – Hex Hd, M4 x 10
6163-48	78-8070-1512-4	Knob – VTR-B-M12
6163-49	78-8032-0375-7	Screw – Hex Hd, M6 x 16
6163-50	78-8076-4809-8	Washer – Crank
6163-51	78-8070-1506-6	Cover – Screw
6163-52	78-8076-5423-7	Shaft
6163-53	78-8076-5424-5	Block
6163-54	78-8076-5425-2	Set Screw – M4 x 3

800a Adjustable Case Sealer

1-2

(*) Not included with Ref. No. 1-2

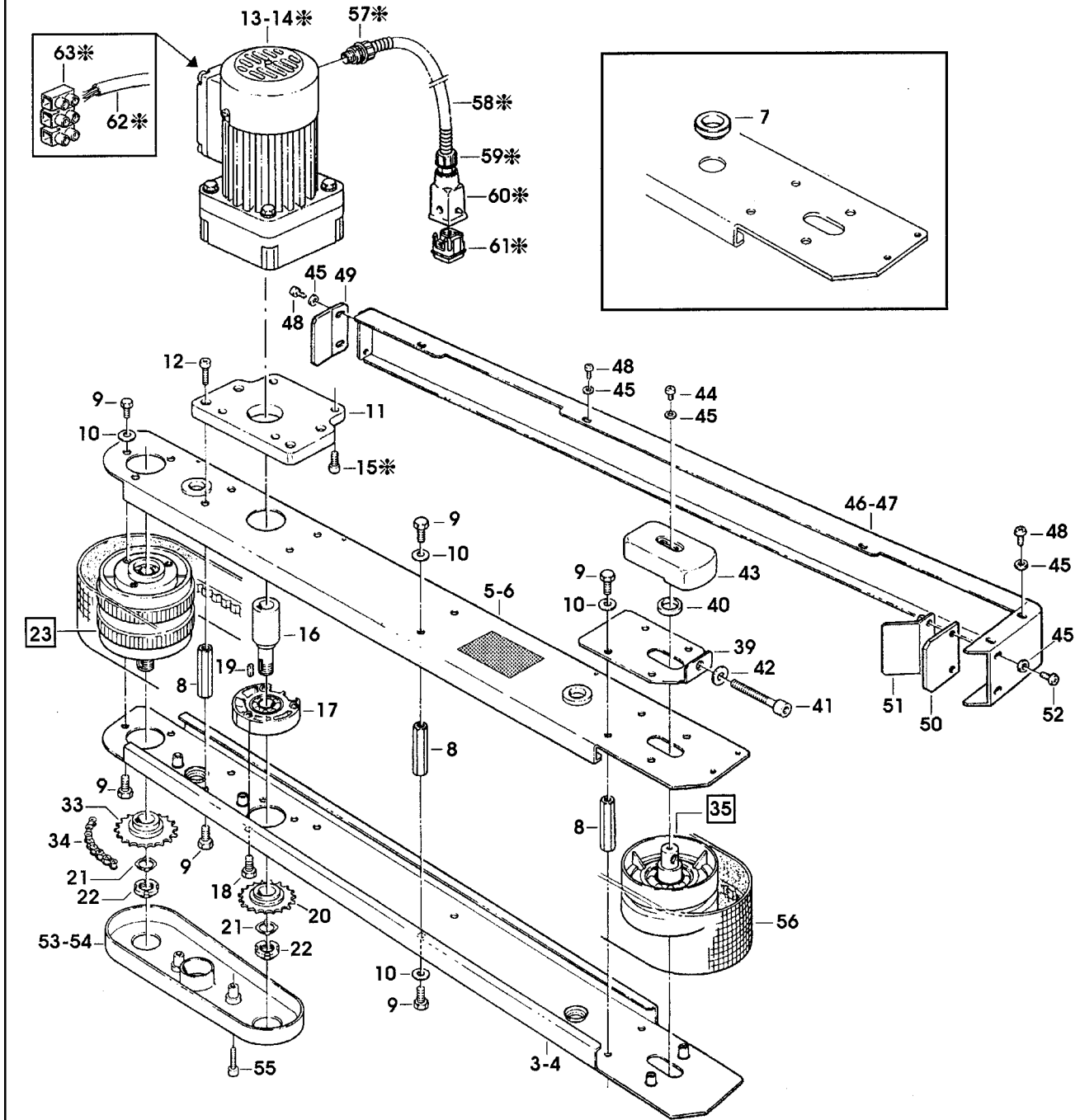


Figure 6164/1 of 2

Figure 6164 (page 1 of 2)

Ref. No.	3M Part No.	Description
6164-1	78-8100-1205-0	Drive Assembly – R/H W/O Motor
6164-2	78-8100-1206-8	Drive Assembly – L/H W/O Motor
6164-3	78-8100-1207-6	Guide – Lower, R/H
6164-4	78-8100-1208-4	Guide – Lower, L/H
6164-5	78-8113-6818-8	Guide – Upper, R/H, W/English Language Label
6164-6	78-8113-6819-6	Guide – Upper, L/H, W/English Language Label
6164-7	78-8091-0500-6	Bushing – Side Drive
6164-8	78-8055-0661-1	Spacer
6164-9	26-1003-5829-5	Screw – Hex Hd, M6 x 12
6164-10	26-1000-0010-3	Washer – Flat M6
6164-11	78-8094-6109-4	Support – Gearmotor
6164-12	78-8023-2334-1	Screw – Soc Hd, Hex Soc, M6 x 25
6164-13	78-8070-1522-3	Gearmotor – Bodine, 42X5BFCI-E2, 15:1, 115V, 60 Hz
6164-14	26-1011-8828-7	Capacitor – 15 μ F, 300VAC, Motor Run
6164-15	78-8070-1523-1	Screw – 1/4 - 28 x 1/2 SHCS
6164-16	78-8094-6174-8	Extension – Gearmotor
6164-17	78-8076-5439-3	Flange Assembly
6164-18	78-8060-7886-7	Screw – Hex Hd, M6 x 16, Special
6164-19	78-8046-8135-7	Key – 5 x 5, 12 mm
6164-20	78-8091-0758-0	Sprocket – 3/8 Inch, Z=14
6164-21	78-8057-5834-5	Tab Washer
6164-22	78-8057-5835-2	Centering Washer
6164-23	78-8076-5440-1	Pulley Assembly – Drive
6164-24	78-8076-5441-9	Roller – Drive
6164-25	78-8052-6713-1	Ring – Polyurethane
6164-26	78-8055-0669-4	Shaft – Pulley Keyed
6164-27	78-8057-5739-6	Key – M5 x 5 x 30 mm
6164-28	78-8055-0668-6	Washer – 15/26 x 1
6164-29	78-8091-0382-9	Belleville Washer – /16
6164-30	78-8076-5442-7	Flange Assembly
6164-31	26-0001-5862-1	Screw – Flat Hd Soc, M5 x 12
6164-32	78-8054-8877-8	Washer – 5,5/20 x 4
6164-33	78-8091-0759-8	Sprocket – 3/8 Inch Z=23
6164-34	78-8076-4933-6	Chain – 3/8 Inch Pitch, 52 Pitch

800a Adjustable Case Sealer

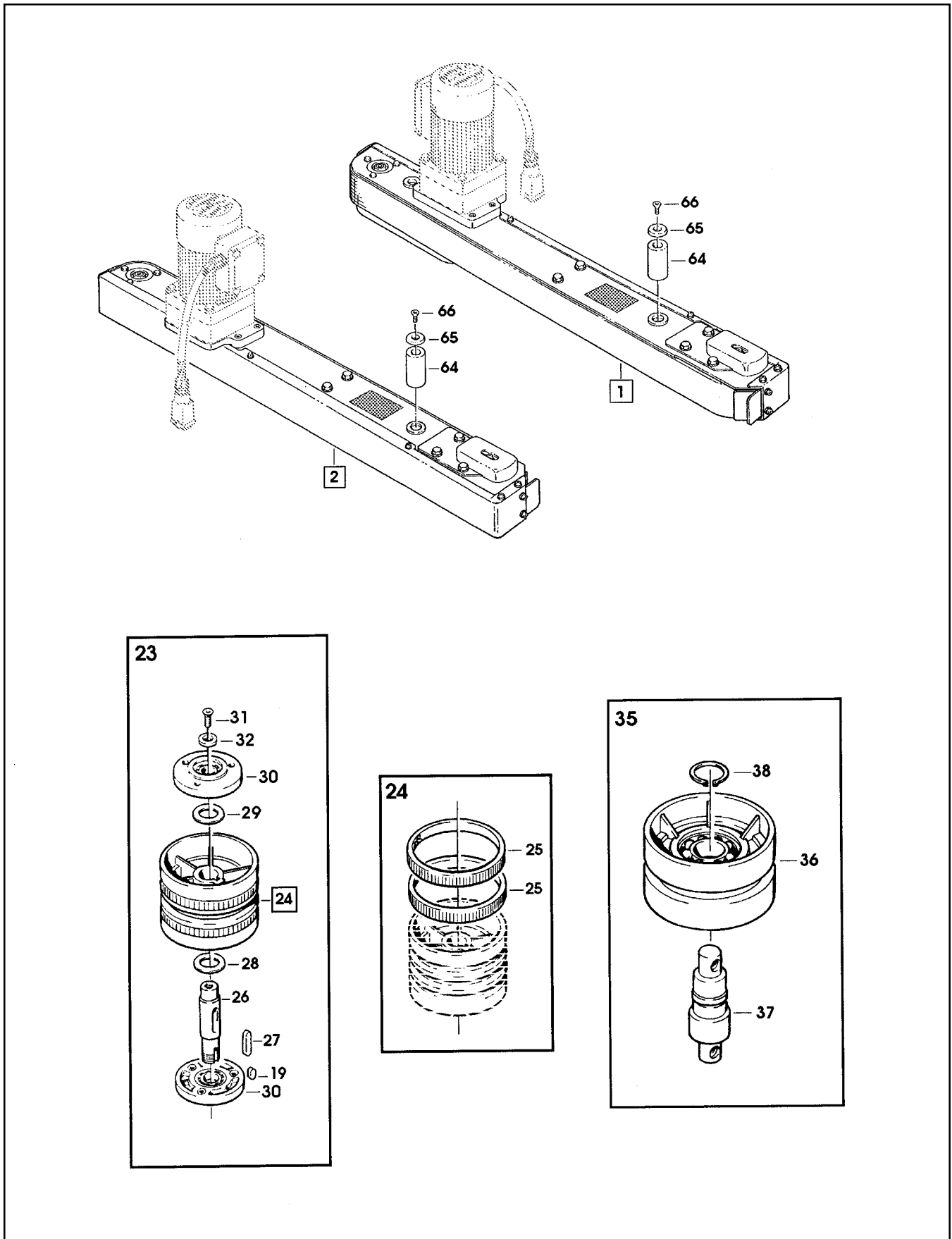


Figure 6164/2 of 2

Figure 6164 (page 2 of 2)

Ref. No.	3M Part No.	Description
6164-35	78-8076-5443-5	Pulley Assembly – Idler
6164-36	78-8055-0660-3	Roller – Idler
6164-37	78-8076-5444-3	Shaft – Idler Pulley
6164-38	12-7997-0272-0	E-Ring – M-25
6164-39	78-8076-5445-0	Tensioning – Belt
6164-40	78-8076-5446-8	Washer – Shaft
6164-41	78-8070-1519-9	Screw – Soc Hd, Hex Hd, M8 x 70
6164-42	78-8017-9318-9	Washer – Plain 8 mm
6164-43	78-8076-5448-4	Cover – Belt Tensioner
6164-44	78-8055-0850-0	Screw – Cap, M4 x 6
6164-45	78-8005-5740-3	Washer – Plain 4 mm
6164-46	78-8100-1211-8	Cover – Drive, R/H
6164-47	78-8100-1212-6	Cover – Drive, L/H
6164-48	26-1002-5753-9	Screw – Self-Tapping
6164-49	78-8100-1213-4	Guard – Belt
6164-50	78-8100-1214-2	Guard – Rubber
6164-51	78-8100-1215-9	Guard – Metal
6164-52	78-8076-5255-3	Screw – Phillips Hd, M4 x 12
6164-53	78-8091-0764-8	Cover – Chain, Right
6164-54	78-8091-0765-5	Cover – Chain, Left
6164-55	78-8010-7165-1	Screw – Flat Hd Soc, M5 x 25
6164-56	78-8076-5452-6	Belt – Box Drive
6164-57	78-8060-7631-7	Connector – 3/8 Inch
6164-58	78-8076-5197-7	Sleeving – /12, 800 mm
6164-59	78-8060-7626-7	Connector – PG 11/12
6164-60	78-8060-7877-6	Plug Housing – Vertical
6164-61	78-8060-7875-0	Plug Male
6164-62	78-8060-8053-3	Wire – 3-Pole, 5 Meters Length
6164-63	78-8076-4968-	

800a Adjustable Case Sealer

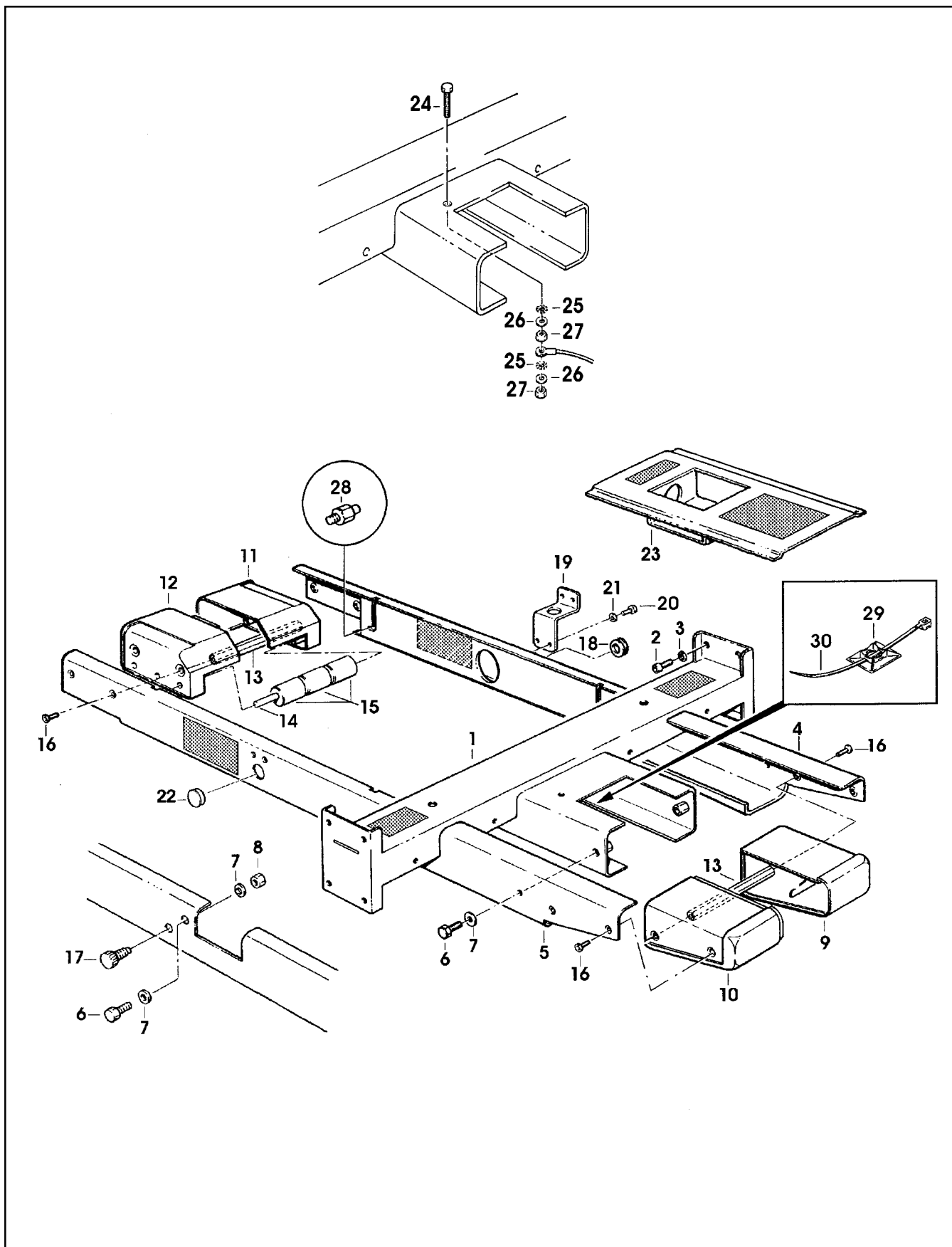


Figure 6165

Figure 6165

Ref. No.	3M Part No.	Description
6165-1	78-8113-6870-9	Cross Bar – Lower, W/English Language Label
6165-2	26-1003-7957-2	Screw – Soc Hd Hex Hd, M6 x 16
6165-3	78-8100-1042-7	Washer – /15 x 6.35 x 2
6165-4	78-8113-6810-5	Frame – R/H, W/English Language Label
6165-5	78-8113-6809-7	Frame – L/H, W/English Language Label
6165-6	26-1003-5842-8	Screw – Hex Hd, M8 x 20
6165-7	78-8017-9318-9	Washer – Plain, 8 mm
6165-8	26-1003-6904-5	Nut – Hex, M8
6165-9	78-8070-1574-4	Slide – Front, Right
6165-10	78-8070-1575-1	Slide – Front, Left
6165-11	78-8070-1576-9	Slide – Rear, Right
6165-12	78-8070-1577-7	Slide – Rear, Left
6165-13	78-8070-1553-8	Spacer
6165-14	78-8070-1554-6	Stud
6165-15	78-8060-7693-7	Roller – 32 x 38
6165-16	26-1005-5316-8	Screw – Flat Hex Hd Dr, M5 x 16
6165-17	78-8070-1555-3	Block – Upper Head
6165-18	78-8060-7758-8	Fairlead – /20
6165-19	78-8054-8955-2	Clamp – Bracket
6165-20	26-1003-5820-4	Screw – Hex Hd, M5 x 12
6165-21	78-8005-5741-1	Washer – Flat, M5
6165-22	78-8076-4517-7	End Cap – /22 x 1
6165-23	78-8113-6758-6	Cover – Upper, W/English Language Label
6165-24	78-8091-0538-6	Screw – Hex Hd, M4 x 20
6165-25	78-8076-4716-5	Star Washer – M4
6165-26	78-8005-5740-3	Washer – Plain, 4 mm
6165-27	78-8010-7416-8	Nut – Hex, M4
6165-28	78-8076-4991-4	Spacer
6165-29	78-8100-1240-7	Plate
6165-30	78-8060-8029-3	Clamp – 140X3,5

800a Adjustable Case Sealer

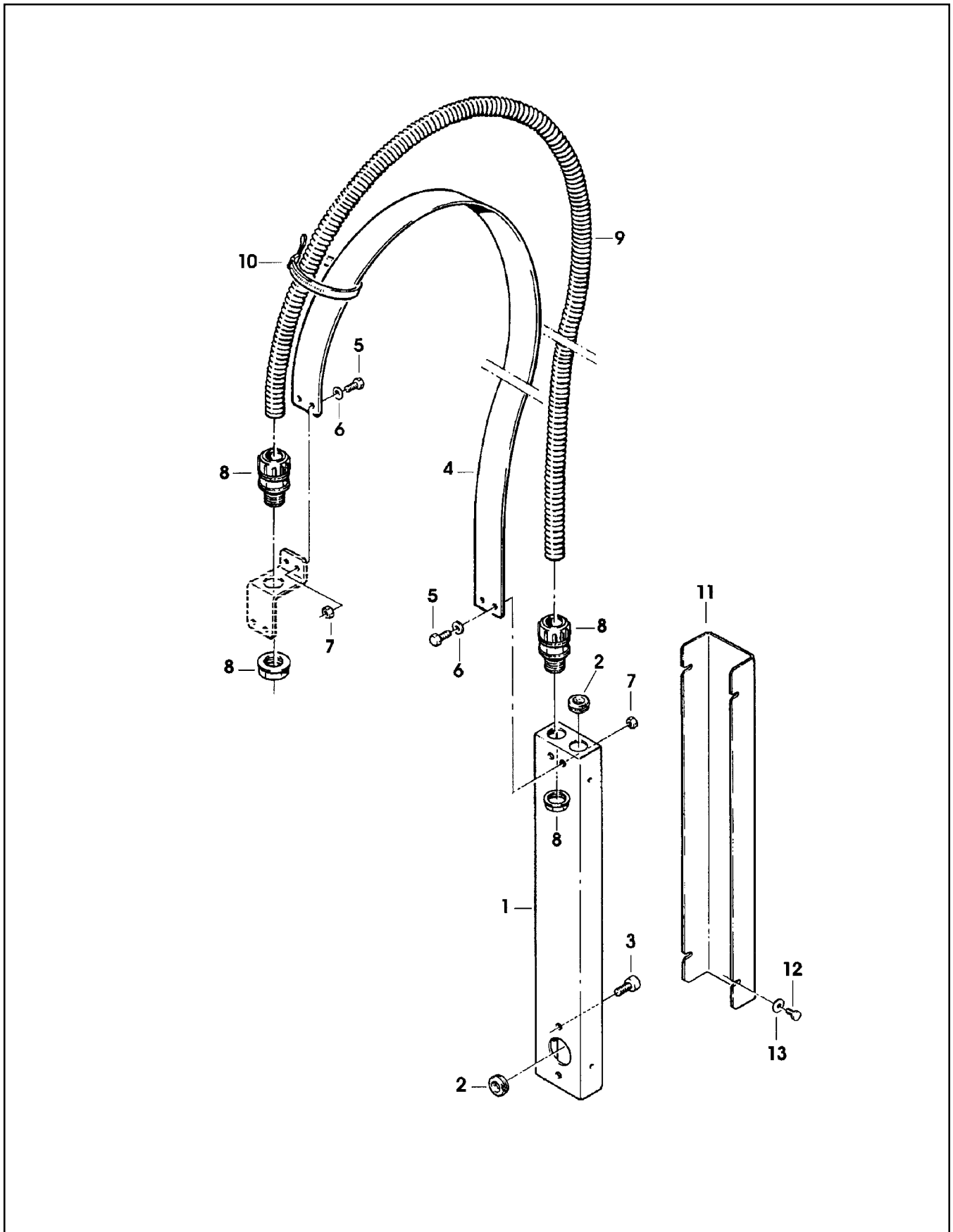
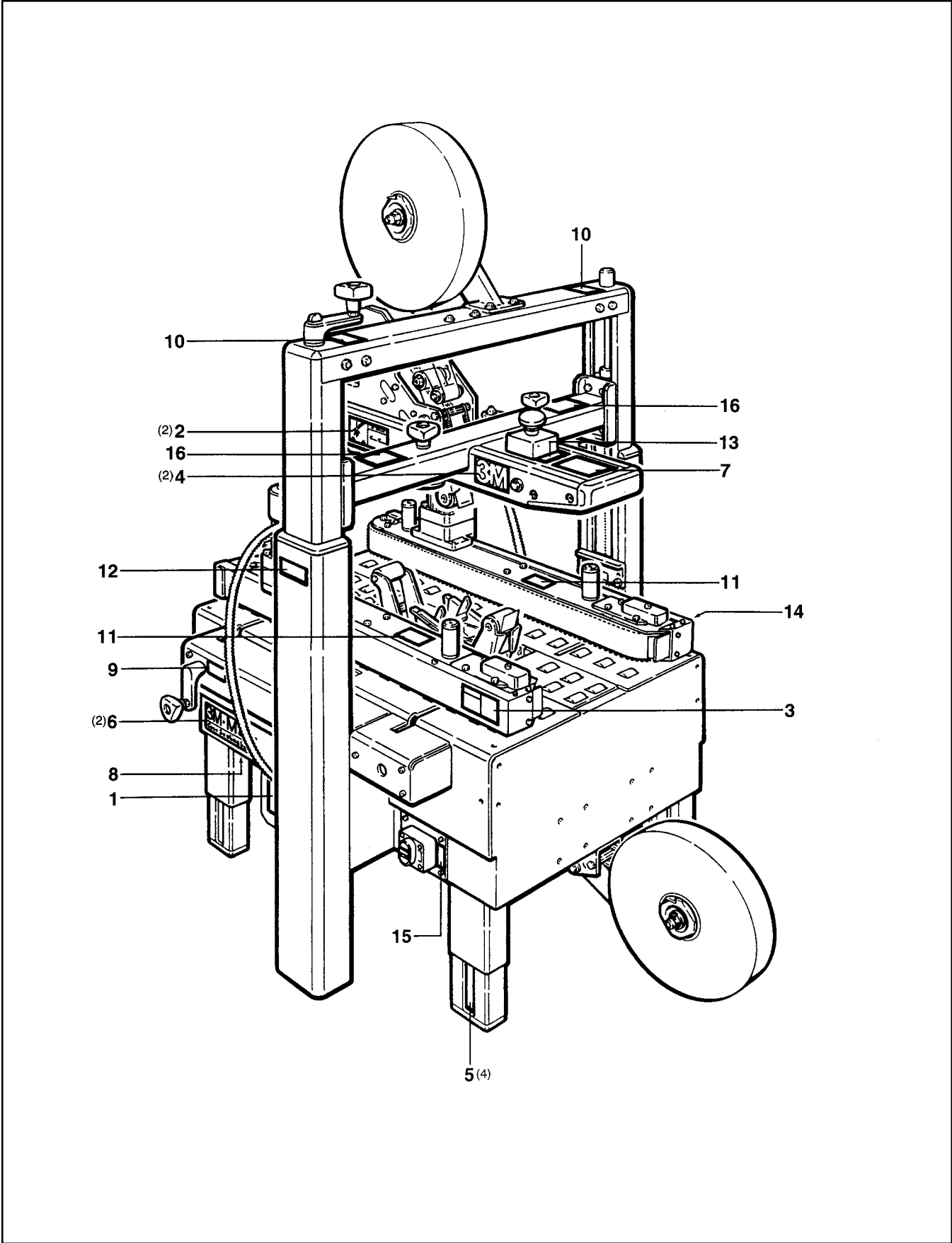


Figure 6166

Figure 6166

Ref. No.	3M Part No.	Description
6166-1	78-8100-1218-3	Housing – Wire
6166-2	78-8060-7758-8	Fairlead – /20
6166-3	26-1003-7963-0	Screw – Soc Hd, M8 x 16
6166-4	78-8076-4636-5	Strap – Wire
6166-5	78-8010-7163-6	Screw – Hex Hd, M5 x 10
6166-6	78-8005-5741-1	Washer – Flat, M5
6166-7	78-8010-7417-6	Nut – Hex, M5
6166-8	78-8060-7631-7	Connector – 3/8 Inch
6166-9	78-8060-8154-9	Sleeving – 0,90 MT
6166-10	78-8060-8029-3	Clamp – 140 x 3,5
6166-11	78-8100-1219-1	Cover – Housing
6166-12	78-8010-7157-8	Screw – Hex Hd, M4 x 10
6166-13	78-8017-9018-5	Washer – Plain, M4

800a Adjustable Case Sealer



Safety and Information Labels

800a Safety and Information Labels

A label kit, part number 78-8113-6744-6, is available as a stock item. It contains all the safety and information labels used on the case sealer, or labels can be ordered separately from the following list.

Ref. No.	3M Part No.	Description	Qty.
1	78-8070-1329-3	Warning – Hazardous Voltage	1
2	78-8070-1336-8	Warning – Sharp Knife	2
3	78-8070-1331-9	Warning – Keep Hands Away From Moving Belts	1
4	78-8070-1339-2	Information – 3M Logo	2
5	78-8060-8481-6	Information – Leg Height	4
6	78-8062-4266-1	Information – 3M-Matic	2
7	78-8070-1366-5	Information – Safety Instructions	1
8	78-8068-3852-6	Information – Ground	1
9	78-8098-8955-9	Information – In/Out, Belt Adjustment	2
10	78-8070-1628-8	Information – Up/Down/Lock, Height Adjustment	1
11	78-8070-1629-6	Information – Belt tensioning	2
12	78-8068-3859-1	Label – Service and Spares	1
13	78-8095-1141-9	Label – Stop	1
14	78-8070-1330-1	Label – Warning	1
15	78-8113-6775-0	Label – Electrical On/Off	1
16	78-8113-6912-9	Label – Caution, Pinch Point	2