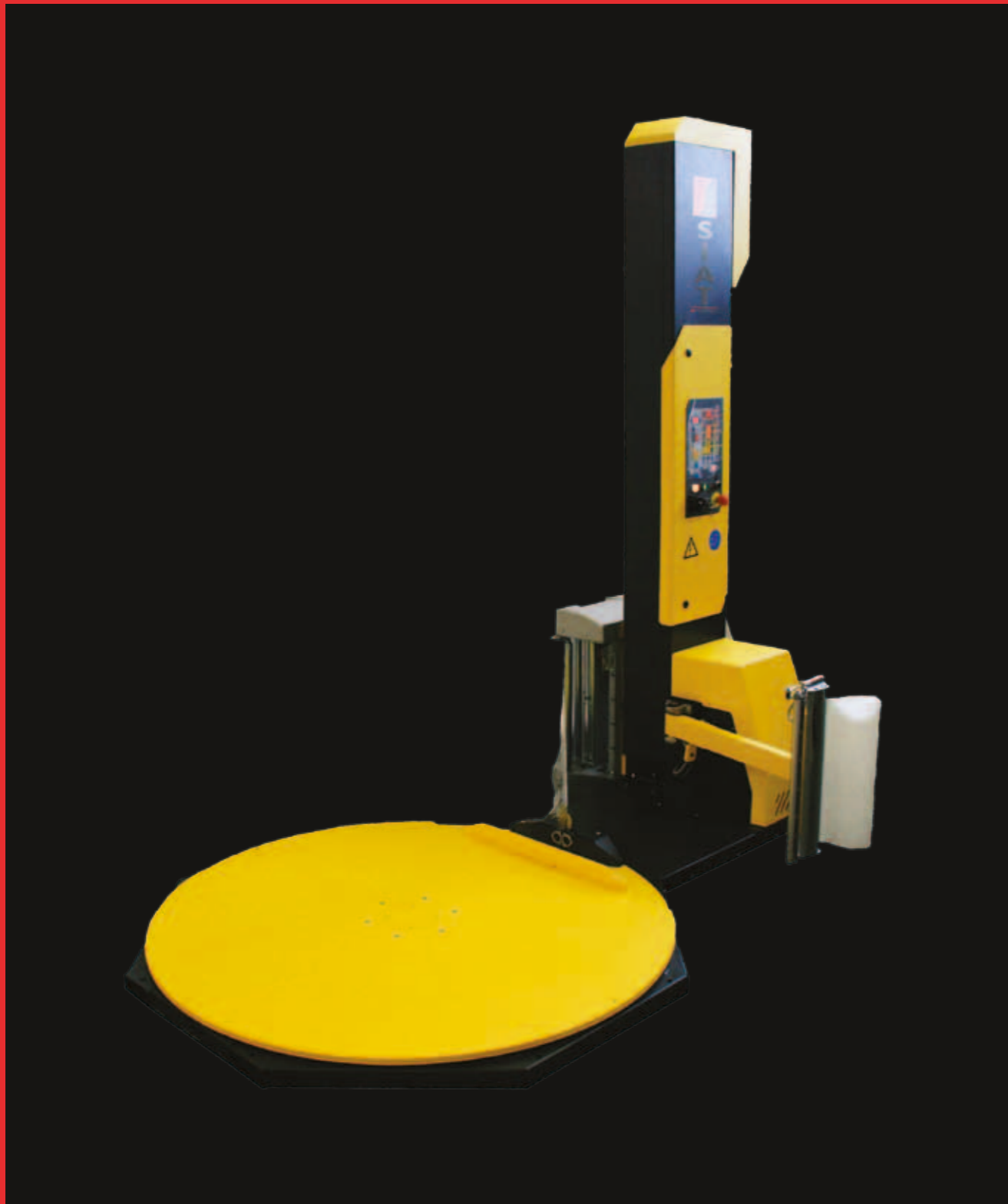


# SW2-AAAC Pallet Wrapper

(formally know as WSEP-AAAC)



Top of the range semi-automatic pallet wrapper with film power pre-stretch within carriage and auto attach auto cut-off

#### Turntable

- 85mm low profile
- 1650mm diameter
- Heavy duty chain and sprocket drive
- 2000kg drive capacity
- Variable speed from 6 to 13 rpm
- Programmable soft start

#### Features

- Pneumatic film attach at start of cycle
- Pneumatic arm with cut blade and film attach
- External start push button, remote or lanyard system
- Barrier on turntable for correct pallet location

#### Power

- 240v single phase or 415v 10 amp 5 pin standard

#### Film Carriage

- Power controlled pre-stretch values up to 300%
- Safety emergency stop system
- Easy load film system
- Max pallet height 2100mm
- Variable travel speed
- PE controlled height sensing

#### Control Panel

- Multiple wrap programs can be stored
- Safety emergency stop
- Manual or auto modes
- 4 automatic wrap programs
- Film tension control
- Top and bottom wrap count
- Lockable control panel

#### Options

- Ramp for hand pallet truck
- Extended mast, taking maximum pallet height to 3000mm
- Top platten for high unstable load
- Guarding protectors with anti-intrusion photo eyes

#### Warranty

All CPS equipment carries a 12 month (single shift) warranty (parts and labour) given normal wear and tear