

## SPARE PARTS

## ERSATZTEILE

### SPARE PARTS ORDER

Order parts by quoting the following information:

- ◆ MACHINE MODEL
- ◆ SERIAL NUMBER
- ◆ FIGURE NO.
- ◆ POSITION
- ◆ 3M PART NO. (11 DIGITS)
- ◆ DESCRIPTION
- ◆ QUANTITY

#### WARNING

The machine is constantly revised and improved by our designers. The spare parts catalogue is also periodically updated. It is **very important** that all the orders of spare parts make reference to the **serial number** of the machine, which is punched on the metal name plate on the machine. The manufacturer reserves the right to modify the machine at any time without notice.

It is suggested that the following spare parts be ordered and kept on hand.

#### 62a-I

Qty./Menge	Ref. No.	3M-Part Number/Teile Nr.	Description/Beschreibung
1	2880-15	78-8057-6179-4	Roller-Applying
1	2881-5	78-8057-6178-6	Roller-Buffering
1	2881-10	78-8070-1274-1	Spring-Upper Extension
1	2883-2	78-8017-9173-8	Blade-65 mm
2	2883-12	78-8052-6602-6	Spring-Cutter
1	2886-10	78-8070-1273-3	Spring-Lower Extension
2	5195-67	78-8070-1531-4	Belt-Drive W/Hook

### ERSATZTEIL-BESTELLUNG

Bei Ersatzteilbestellungen müssen folgende Informationen aufgeführt werden:

- ◆ MASCHINENMODELL
- ◆ MATRIKELNUMMER
- ◆ FIGUR NR.
- ◆ POSITION
- ◆ 3M TEILE NR. (11-STELLIG)
- ◆ BEZEICHNUNG
- ◆ BESTELLMENGE

#### WICHTIGER HINWEIS:

Unsere Entwicklungsabteilung ist bemüht, die Qualität und Sicherheit der Maschine laufend zu verbessern. Mögliche Änderungen erscheinen periodisch auch in den Ersatzteillisten. Es ist deshalb **sehr wichtig**, dass alle Ersatzteilbestellungen immer die **Matrikel-Nummer** (im Maschinen-Typenschild eingestanz) erwähnen.

Wir empfehlen die folgenden Ersatzteile zu bestellen und immer am Lager zu halten:

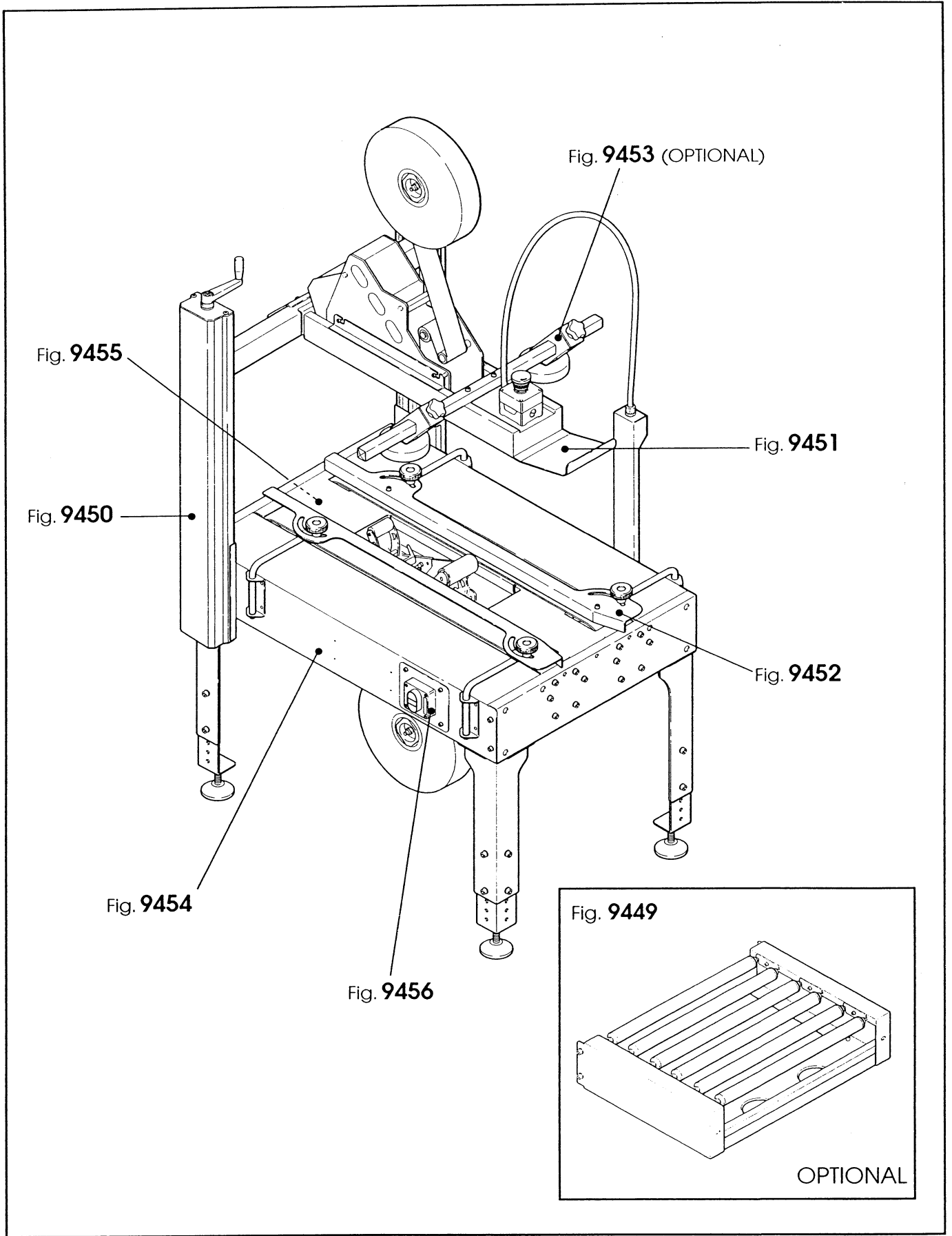


Figura	Descrizione figura	Magaz.	Codice	Descrizione
9449	PIANETTO A RULLI	0	78811736905	62a-I ADJUSTABLE CASE SEALER

Posizione	Codice	Descrizione	U.M.	Quantita'
1	78812963979	FRAME - R/H	PZ	1
2	78812963987	FRAME - L/H	PZ	1
3	78807645797	ROLLER - /32X492	PZ	6
4	78807645078	PLATE - INFEED	PZ	3
5	78801071578	SCREW-HEX.HD. M4X10	PZ	3
6	78800557403	WASHER PLAIN-METRIC 4MM NICK.	PZ	3
7	78812963995	REINFORCEMENT	PZ	1
8	26100379648	SCREW SOC.HD.HEX SOC.DR. ,M8X20	PZ	8
9	78801793189	WASHER-PLAIN-METRIC 8MM	PZ	8

Data 21/05/2002

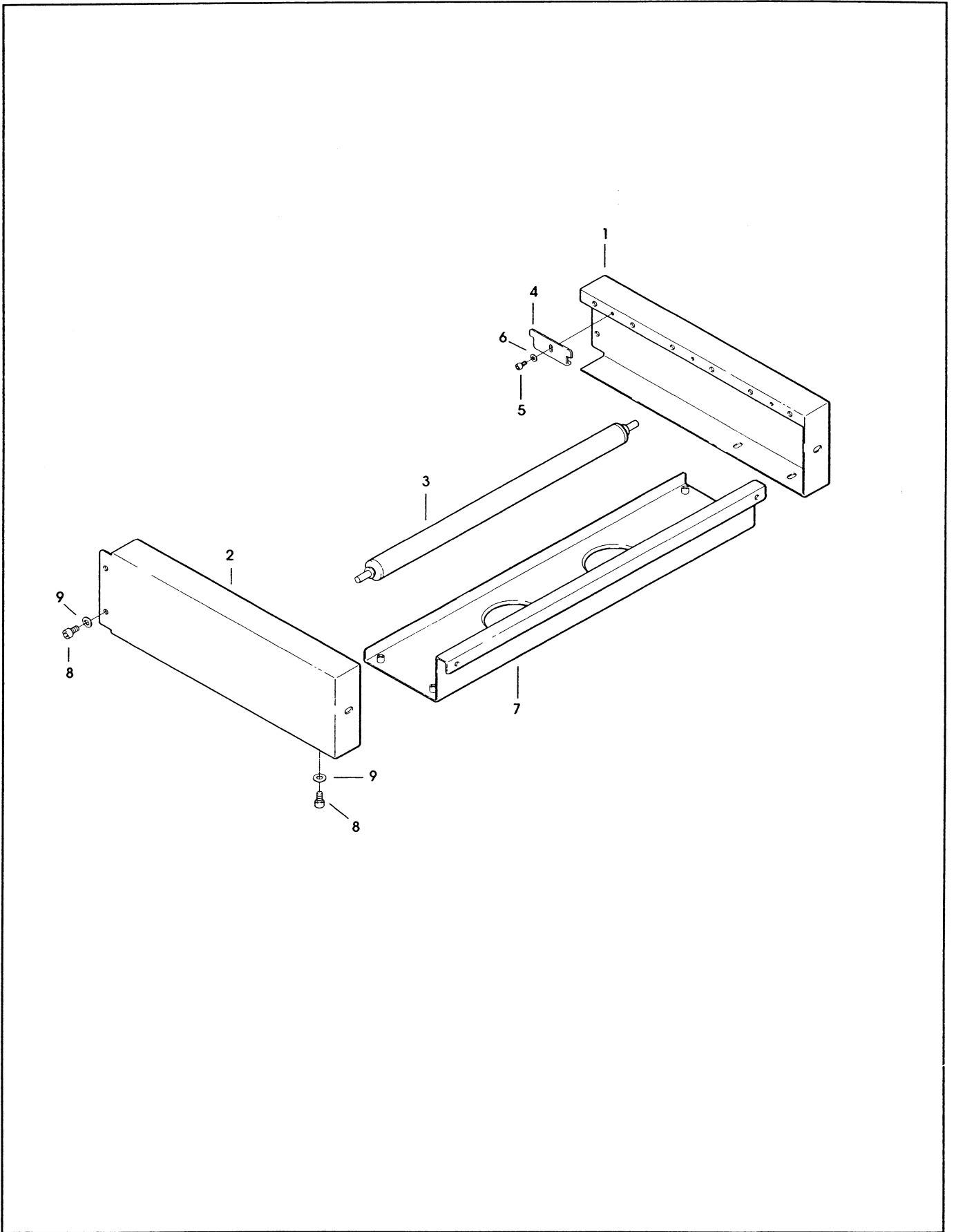
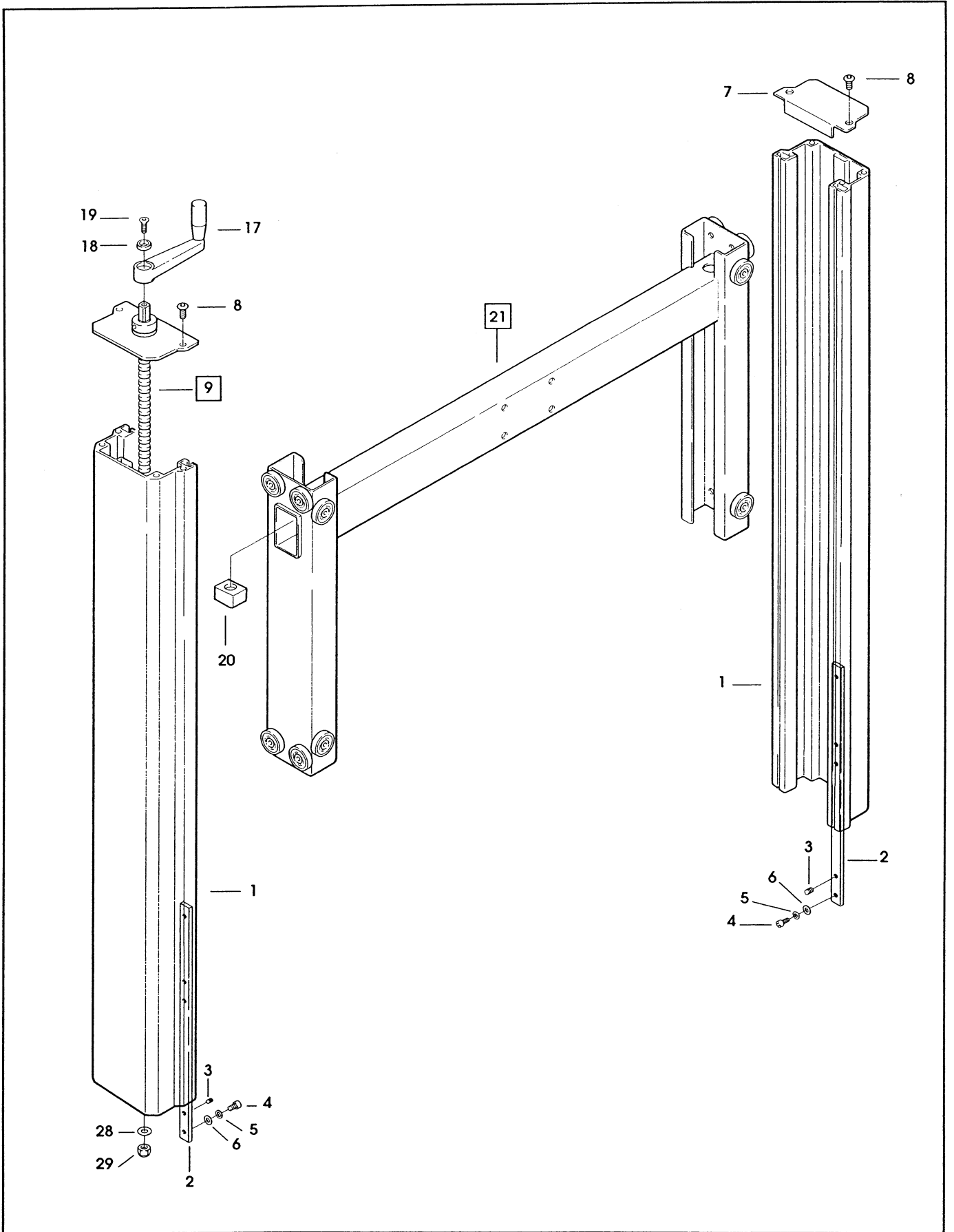


Figura	Descrizione figura	Magaz.	Codice	Descrizione
9450	GRUPPO COLONNE	0	78811736905	62a-I ADJUSTABLE CASE SEALER

Posizione	Codice	Descrizione	U.M.	Quantita'
1	78812964001	COLUMN - OUTER	PZ	2
2	78812964019	PLATE - COLUMN	PZ	2
3	78806078891	SET SCREW M8X10	PZ	4
4	26100358410	SCREW M8X16	PZ	8
5	78800557361	LOCKWASHER-FOR M8 SCREW	PZ	8
6	78801793189	WASHER-PLAIN-METRIC 8MM	PZ	8
7	78812964027	COVER - COLUMN	PZ	1
8	78812961247	SCREW - CUPHD., M8x16	PZ	4
9	78812964035	LEAD SCREW ASSY	PZ	1
10	78812964043	COVER W/ HOLE	PZ	1
11	78812964050	SCREW - LEAD	PZ	1
12	78812961437	BUSHING	PZ	1
13	78805485865	PIN	PZ	1
14	78806081259	BUSHING	PZ	1
15	78812961429	NUT	PZ	1
16	26100379465	SCREW - SOC.HD. M4X25	PZ	1
17	78812961189	HANDLE	PZ	1
18	78806080731	WASHER - MOTOR	PZ	1
19	26000158621	SCREW, FLAT HD SOC.M5X12	PZ	1
20	78805485717	PLASTIC NUT	PZ	1
21	78812964068	INNER COLUMN ASSY	PZ	1
22	78812964076	COLUMN - INNER	PZ	1
23	78812961478	BEARING - BALL	PZ	16
24	78801791068	SCREW-BEARING SHOULDER	PZ	12
25	78805489420	WASHER	PZ	16
26	26100000103	WASHER - FLAT M6	PZ	16
27	26100369169	NUT LOCKING PLASTIC INSERT M6	PZ	16
28	26100455075	WASHER M8	PZ	1
29	26100369045	NUT - HEX, M8	PZ	1
30	78805485899	SCREW SPECIAL	PZ	4

Data 21/05/2002



62a

Feb. 2002

Fig. 9450/1

Figura	Descrizione figura	Magaz.	Codice	Descrizione
9450	GRUPPO COLONNE	0	78811736905	62a-I ADJUSTABLE CASE SEALER

Posizione	Codice	Descrizione	U.M.	Quantita'
1	78812964001	COLUMN - OUTER	PZ	2
2	78812964019	PLATE - COLUMN	PZ	2
3	78806078891	SET SCREW M8X10	PZ	4
4	26100358410	SCREW M8X16	PZ	8
5	78800557361	LOCKWASHER-FOR M8 SCREW	PZ	8
6	78801793189	WASHER-PLAIN-METRIC 8MM	PZ	8
7	78812964027	COVER - COLUMN	PZ	1
8	78812961247	SCREW - CUPHD., M8x16	PZ	4
9	78812964035	LEAD SCREW ASSY	PZ	1
10	78812964043	COVER W/ HOLE	PZ	1
11	78812964050	SCREW - LEAD	PZ	1
12	78812961437	BUSHING	PZ	1
13	78805485865	PIN	PZ	1
14	78806081259	BUSHING	PZ	1
15	78812961429	NUT	PZ	1
16	26100379465	SCREW - SOC.HD. M4X25	PZ	1
17	78812961189	HANDLE	PZ	1
18	78806080731	WASHER - MOTOR	PZ	1
19	26000158621	SCREW, FLAT HD SOC.M5X12	PZ	1
20	78805485717	PLASTIC NUT	PZ	1
21	78812964068	INNER COLUMN ASSY	PZ	1
22	78812964076	COLUMN - INNER	PZ	1
23	78812961478	BEARING - BALL	PZ	16
24	78801791068	SCREW-BEARING SHOULDER	PZ	12
25	78805489420	WASHER	PZ	16
26	26100000103	WASHER - FLAT M6	PZ	16
27	26100369169	NUT LOCKING PLASTIC INSERT M6	PZ	16
28	26100455075	WASHER M8	PZ	1
29	26100369045	NUT - HEX, M8	PZ	1
30	78805485899	SCREW SPECIAL	PZ	4

Data 21/05/2002

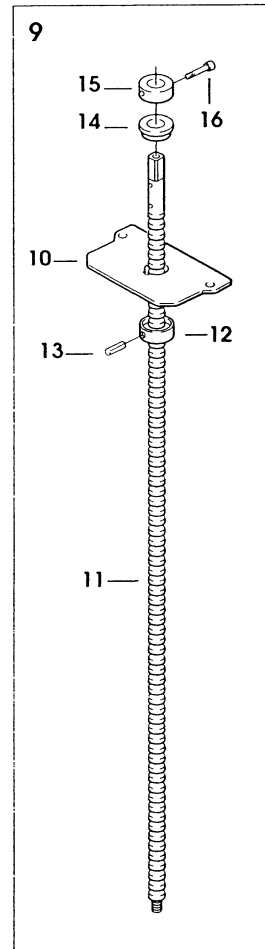
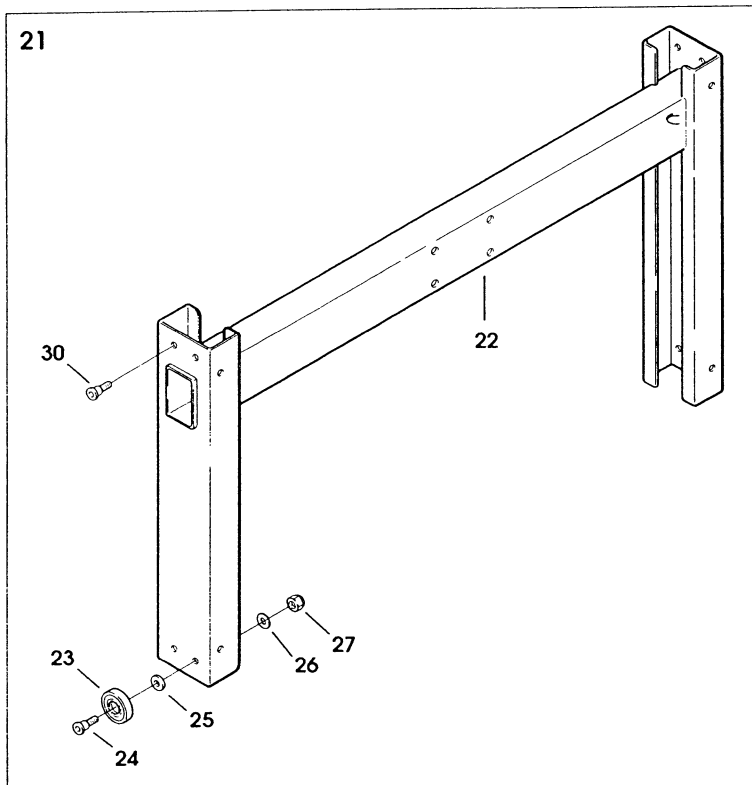
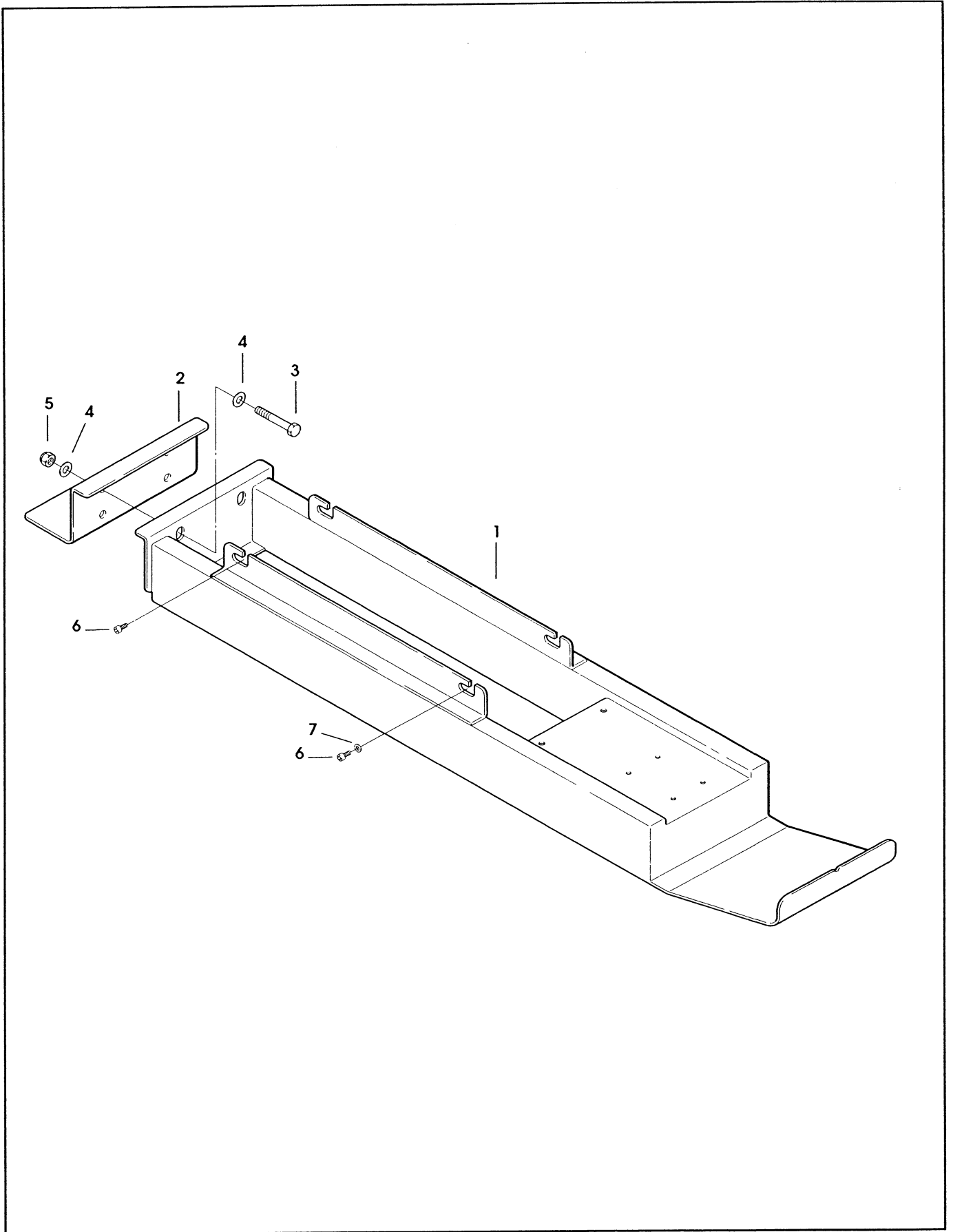




Figura	Descrizione figura	Magaz.	Codice	Descrizione
9451	PORTA UNITA' SUPERIORE	0	78811736905	62a-I ADJUSTABLE CASE SEALER

Posizione	Codice	Descrizione	U.M.	Quantita'
1	78812964084	SUPPORT - UPPER HEAD	PZ	1
2	78812964555	BRACKET UPPER UNIT	PZ	1
3	26100259493	SCREW - HEX.HD. M8x60	PZ	4
4	78801793189	WASHER-PLAIN-METRIC 8MM	PZ	8
5	78801793130	NUT SELF LOCKING M8 NICK.PL.	PZ	4
6	78801072097	SCREW, SOC.HD.M6X12	PZ	4
7	26100000103	WASHER - FLAT M6	PZ	2

Data 21/05/2002



62a

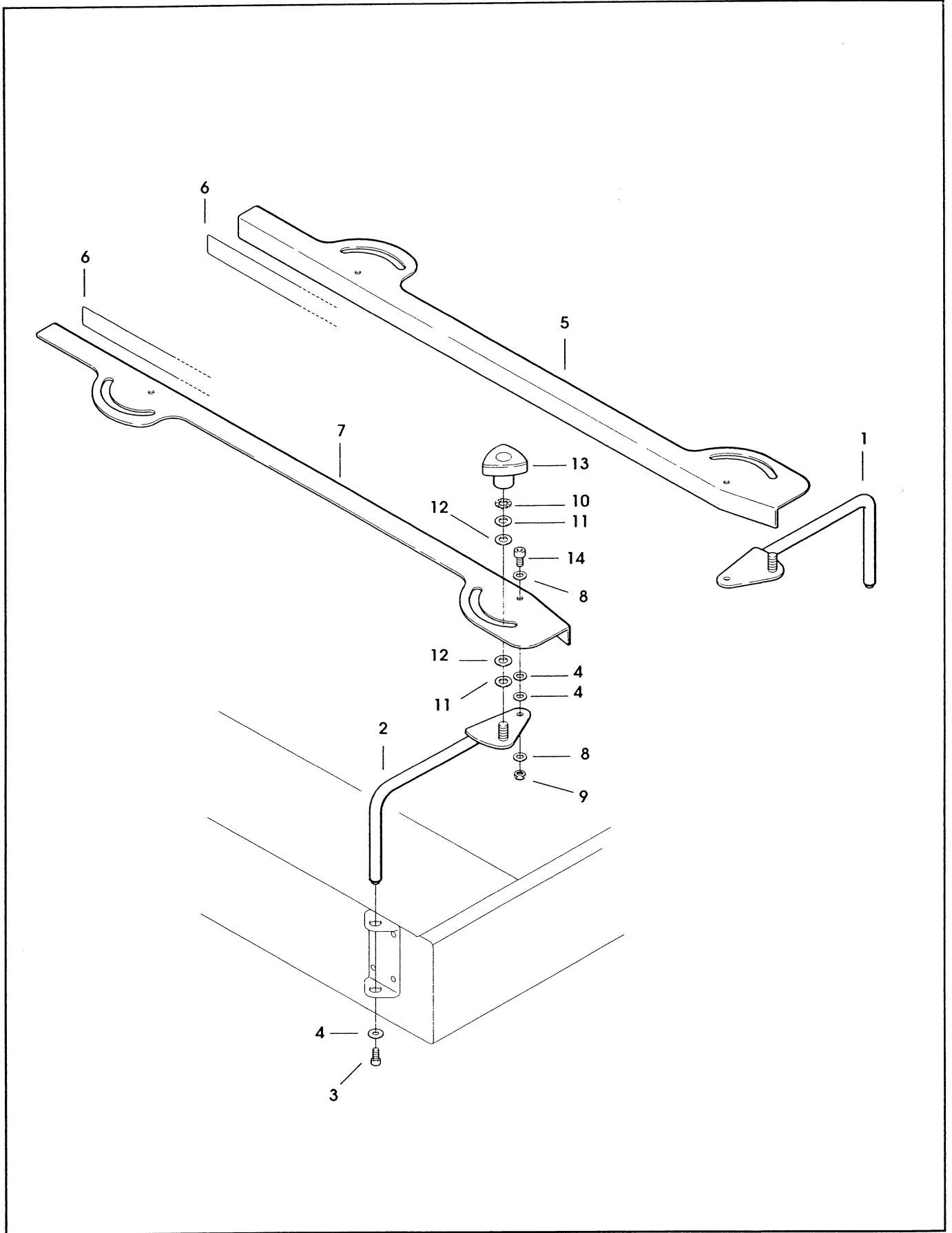
Feb. 2002

Fig. 9451

Figura	Descrizione figura	Magaz.	Codice	Descrizione
9452	GUIDE LATERALI	0	78811736905	62a-I ADJUSTABLE CASE SEALER

Posizione	Codice	Descrizione	U.M.	Quantita'
1	78812964100	LEVER - R/H	PZ	2
2	78812964118	LEVER - L/H	PZ	2
3	26100379572	SCREW SOC. HD. HEX HD. M6X16	PZ	8
4	78804229199	WASHER - TRIPLE, M6	PZ	12
5	78812964126	GUIDE - R/H	PZ	1
6	78807953787	TAPE - GUIDE	MT	1,88
7	78812964134	GUIDE - L/H	PZ	1
8	26100000103	WASHER - FLAT M6	PZ	8
9	78809104181	NUT - SELF-LOCKING, M6	PZ	4
10	78805758030	WASHER, DENTED	PZ	4
11	26100455109	WASHER - PLAIN, M10	PZ	8
12	78801790748	WASHER-NYLON 15MM	PZ	4
13	78807015496	KNOB VTR-B-M10	PZ	4
14	78801072105	SCREW - SOC.HD.HEX.SOC.M6X20	PZ	4

Data 21/05/2002



62a

Feb. 2002

Fig. 9452

Figura	Descrizione figura	Magaz.	Codice	Descrizione
9453	PRESSATORI LATERALI	0	78811736905	62a-I ADJUSTABLE CASE SEALER

Posizione	Codice	Descrizione	U.M.	Quantita'
1	78812964142	SUPPORT - ROLLER	PZ	2
2	78805486483	ROLLER - PRESSURE	PZ	2
3	78805506223	BUSHING	PZ	2
4	78805267032	WASHER - SPECIAL	PZ	2
5	26100358451	SCREW - HEX HD. M-8X40	PZ	2
6	78812961551	KNOB	PZ	2
7	78812964159	TUBE - ROLLER SUPPORT	PZ	1
8	78805266521	CAP - END	PZ	2
9	26100379622	SCREW, SOC. HD. M6X40	PZ	2
10	78804229199	WASHER - TRIPLE, M6	PZ	2

---

Data 21/05/2002

OPTIONAL

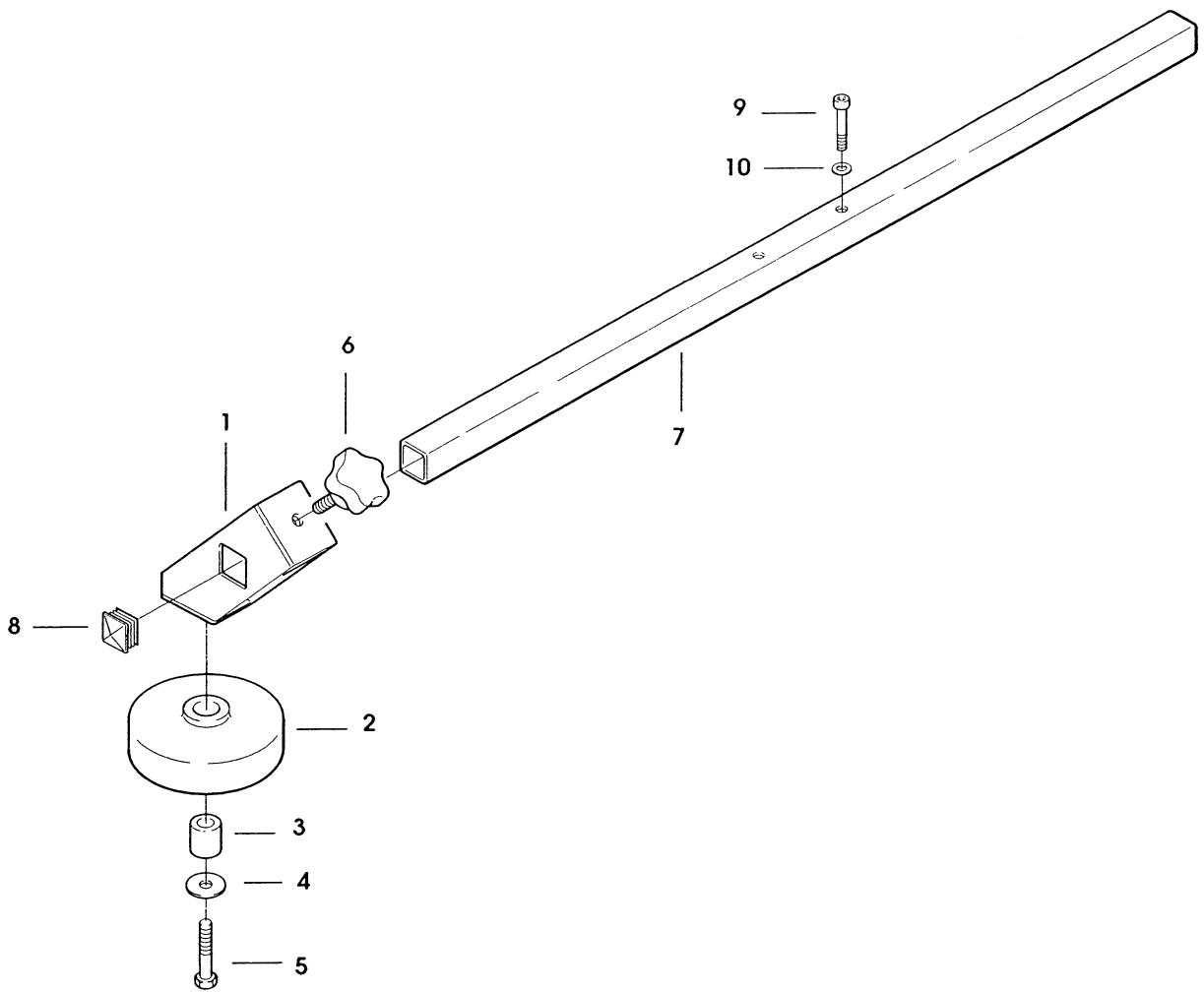


Figura	Descrizione figura	Magaz.	Codice	Descrizione
9454	GRUPPO BANCALE	0	78811736905	62a-I ADJUSTABLE CASE SEALER

Posizione	Codice	Descrizione	U.M.	Quantita'
1	78812964167	SIDE FRAME - R/H	PZ	1
2	78812964175	SIDE FRAME - L/H	PZ	1
3	78812964183	SUPPORT - BOTTOM HEAD	PZ	1
4	26100379572	SCREW SOC. HD. HEX HD. M6X16	PZ	12
5	26100000103	WASHER - FLAT M6	PZ	12
7	78812964191	FRAME - FRONT	PZ	1
8	78812964209	BRACKET - R/H	PZ	2
9	78812964217	BRACKET - L/H	PZ	2
10	26100379648	SCREW SOC.HD.HEX SOC.DR. .M8X20	PZ	46
11	78801793189	WASHER-PLAIN-METRIC 8MM	PZ	12
12	78812964225	SHAFT - PULLEY	PZ	2
13	78805267107	ROLLER - IDLER	PZ	2
14	12799702720	E-RING, M-25	PZ	4
15	78812964233	SPACER	PZ	4
16	78812964241	SCREW - SPECIAL M8x100	PZ	20
17	78812964258	FRAME - REAR	PZ	1
18	78812964266	CONVEYOR	PZ	1
19	78803203823	SCREW-SOC.HEX HD.M5X16 ZINC.PL	PZ	10
20	78812964274	HOUSING - WIRE	PZ	1
21	78812964282	COVER	PZ	1
22	78812961031	SCREW - SPECIAL, M4x10	PZ	2
23	78800557411	WASHER - FLAT, M5	PZ	4
24	78812961080	SLEEVE - WIRE	MT	1
25	78812964290	UNION - STRAIGHT	PZ	1
26	78812964308	NUT - M16x1.5	PZ	1
27	78812964316	LEG - OUTER	PZ	4
28	78812964324	LEG ASSY - INNER	PZ	4
29	26100369045	NUT - HEX, M8	PZ	16
30	78812964332	FOOT - LEVELLING	PZ	4
31	26100369060	NUT - METRIC M-12	PZ	4
32	78807647165	STAR WASHER - M4	PZ	2
33	78801074168	NUT-METRIC, HEX, STEEL M4	PZ	2
34	78809105386	SCREW - HEX.HD. M4X20	PZ	1
35	78800557403	WASHER PLAIN-METRIC 4MM NICK.	PZ	2
37	78812964340	CASTER	PZ	2
38	78812964357	CASTER W/ BRAKE	PZ	2
39	78806076994	WASHER /12-45.5X4	PZ	4
40	26100369060	NUT - METRIC M-12	PZ	4
41	26100455075	WASHER M8	PZ	32

Data 21/05/2002

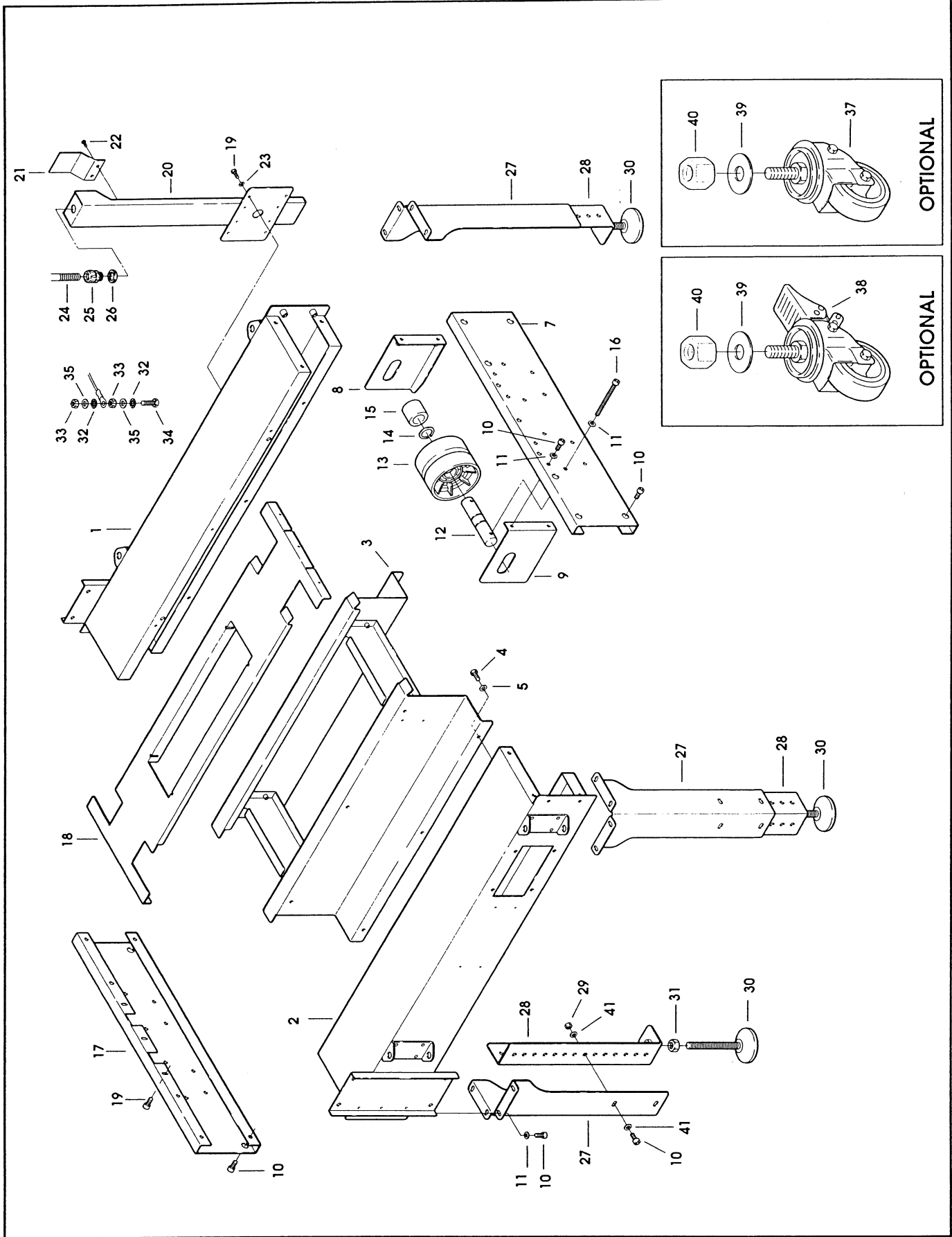
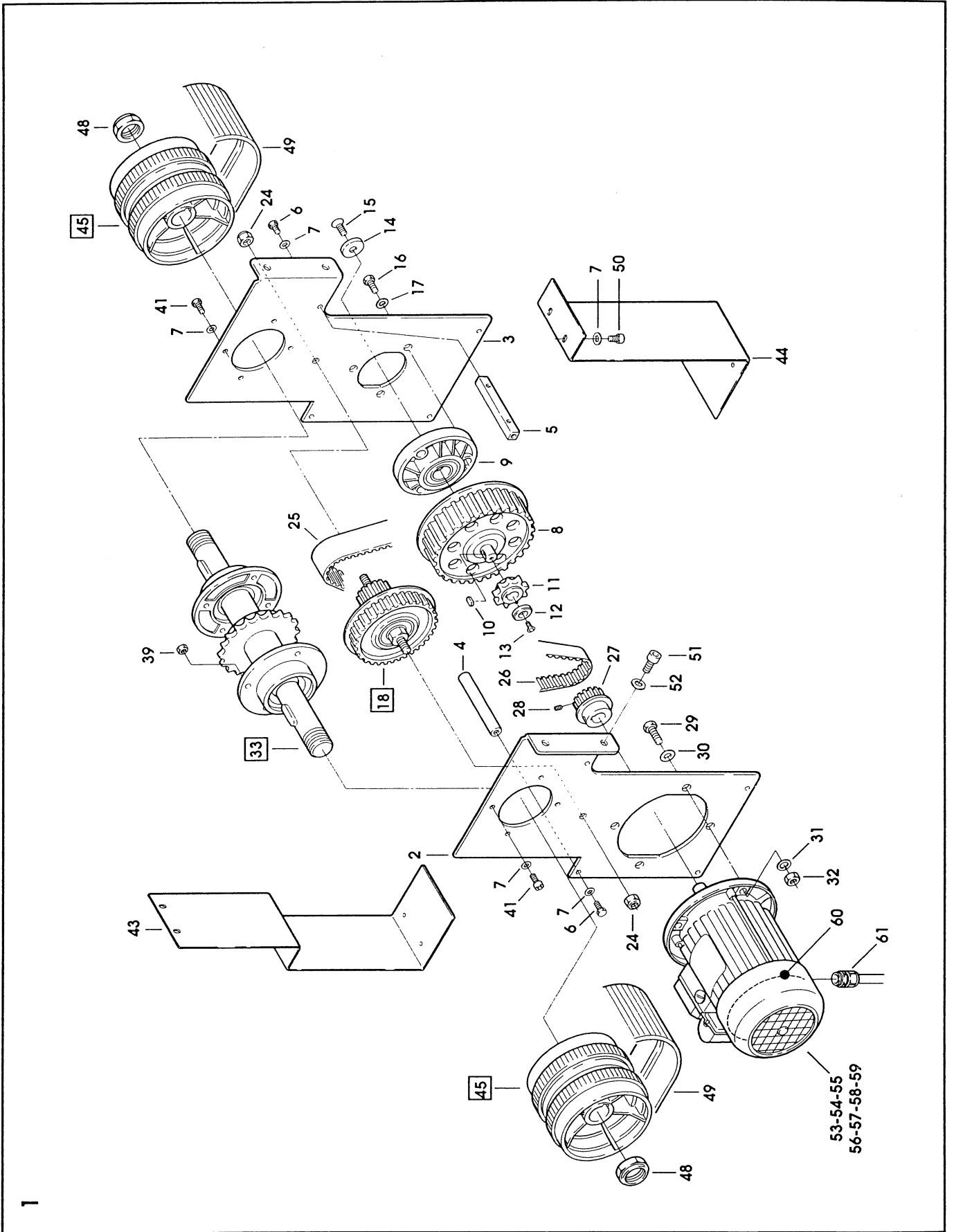




Figura	Descrizione figura	Magaz.	Codice	Descrizione
9455	GR.TRASCINAMENTO INFERIORE	0	78811736905	62a-I ADJUSTABLE CASE SEALER

Posizione	Codice	Descrizione	U.M.	Quantita'
1	78812964373	GEARBOX ASSY W/O MOTOR	PZ	1
2	78812964381	FRAME - R/H, GEARBOX	PZ	1
3	78812964399	FRAME - L/H, GEARBOX	PZ	1
4	78805489750	SPACER	PZ	1
5	78805489776	SPACER	PZ	4
6	26100358204	SCREW - HEX HD.M-5X12	PZ	10
7	78800557411	WASHER - FLAT, M5	PZ	18
8	78806081465	GEAR BOX PULLEY ASS.Y	PZ	1
9	78805489792	HOUSING-BEARING	PZ	1
10	78802882445	KEY - 4 X 4 X 10MM	PZ	1
11	78805489818	SPROCKET - 3/8 PITCH, 11 TEETH	PZ	1
12	78805488778	WASHER, 5,5/20X4	PZ	1
13	26000158621	SCREW, FLAT HD SOC.M5X12	PZ	1
14	78805485774	WASHER - SPECIAL	PZ	1
15	26100198436	SCREW FLAT SOC.HD.M6X16	PZ	1
16	78801071933	SCREW-METRIC, M6X20, HEX.HD.	PZ	3
17	78804229199	WASHER - TRIPLE, M6	PZ	3
18	78807645300	PULLEY ASS.Y	PZ	1
19	78812964407	PULLEY ASSY	PZ	1
20	78802325445	BEARING-6203-2RS	PZ	1
21	78802324109	BEARING - 6000-2RS	PZ	1
22	78807645318	SHAFT - TIMING PULLEY	PZ	1
23	78801658556	E - RING 10MM	PZ	1
24	78807645805	NUT - SELF LOCKING M8	PZ	2
25	78805758089	TIMING BELT 187L100	PZ	1
26	78805757248	TIMING BELT 187L050 BORAN	PZ	1
27	78805489826	PULLEY-TIMING 11 TEETH	PZ	1
28	26100388169	SCREW, SET M5X6	PZ	1
29	78801793015	SCREW-HEX HEAD M8X25	PZ	4
30	26100455075	WASHER M8	PZ	4
31	78800557361	LOCKWASHER-FOR M8 SCREW	PZ	4
32	26100369045	NUT - HEX, M8	PZ	4
33	78807645821	DRIVE SHAFT ASS.Y	PZ	1
34	78805489867	SPROCKET-3/8" PITCH,28 TEETH	PZ	1
35	78805758113	KEY,6X6X20 MM.	PZ	1
36	78805757396	KEY, M5X5X30 MM	PZ	2
37	78805489842	BUSHING	PZ	1
38	78805489834	HOUSING-BEARING	PZ	2
39	78801074176	NUT - METRIC, HEX STL. M5	PZ	8
40	78807645813	SHAFT - GEAR BOX	PZ	1
41	78803203823	SCREW-SOC.HEX HD.M5X16 ZINC.PL	PZ	8
42	78805489875	CHAIN-3/8" PITCH,57 PITCH LONG	PZ	1
43	78812964423	COVER - FRONT	PZ	1
44	78812964415	COVER - REAR	PZ	1
45	78807651050	PULLEY ASS.Y - DRIVE	PZ	2
47	78805267131	RING - POLYURETHANE	PZ	2
48	78806084162	NUT - SPECIAL M20X1	PZ	2
49	78807015314	BELT - DRIVE, WITH HOOK	PZ	2
50	26100379499	SCREW SOC. HD. HEX SOC. M5X12	PZ	4
51	26100379648	SCREW SOC.HD.HEX SOC.DR.,M8X20	PZ	8
52	78801793189	WASHER-PLAIN-METRIC 8MM	PZ	4
53	78805267180	MOTOR- 220/415V, 50HZ, 3-PHASE	PZ	1
54	78804682686	MOTOR 1-PH, 220/240V. 50HZ	PZ	1

MH63 C4 KW 0.12 B5



62a

Feb. 2002

Fig. 9455/1

Figura	Descrizione figura	Magaz.	Codice	Descrizione
9455	GR.TRASCINAMENTO INFERIORE	0	78811736905	62a-I ADJUSTABLE CASE SEALER

Posizione	Codice	Descrizione	U.M.	Quantita'
55	78810008652	MOTOR - 200/220V, 50/60HZ 3-PHASE, 0.12 KW	PZ	1
56	78805267198	MOTOR - 260/440V - 50HZ 3PHASE	PZ	1
57	78804682678	MOTOR- 110/110V, 50/60HZ 1-PHASE, 0.12 KW	PZ	1
58	78809106541	MOTOR - 125V 60HZ 1-PHASE	PZ	1
59	78807645904	MOTOR 220/240V 60HZ 1-PHASE	PZ	1
60	78807653726	FAN - MOTOR	PZ	1
61	78807645326	CORD GRIP	PZ	1

Data 21/05/2002

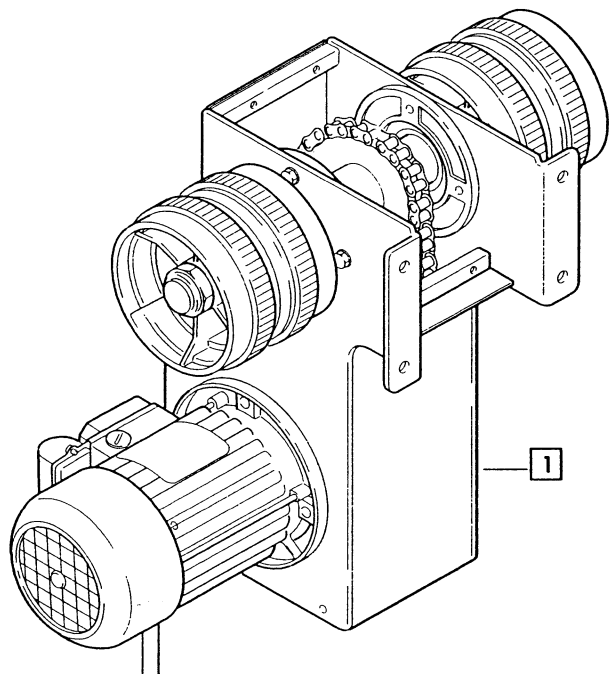
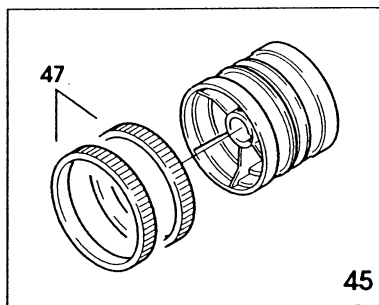
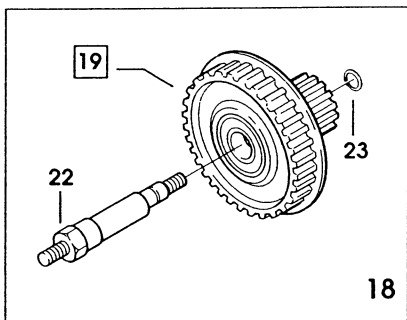
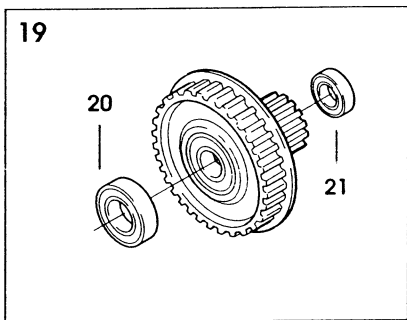
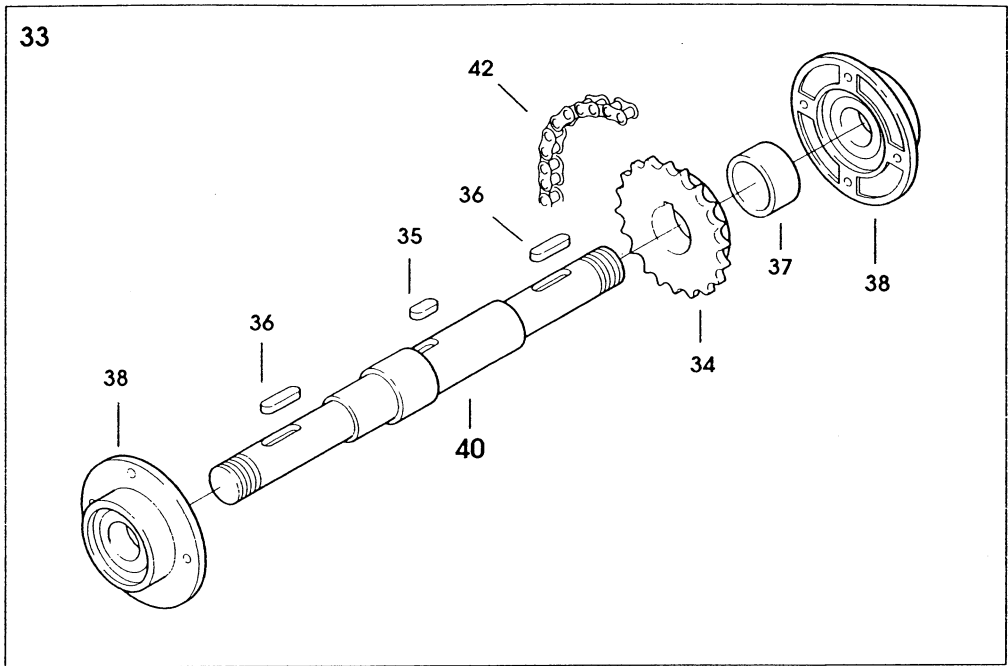
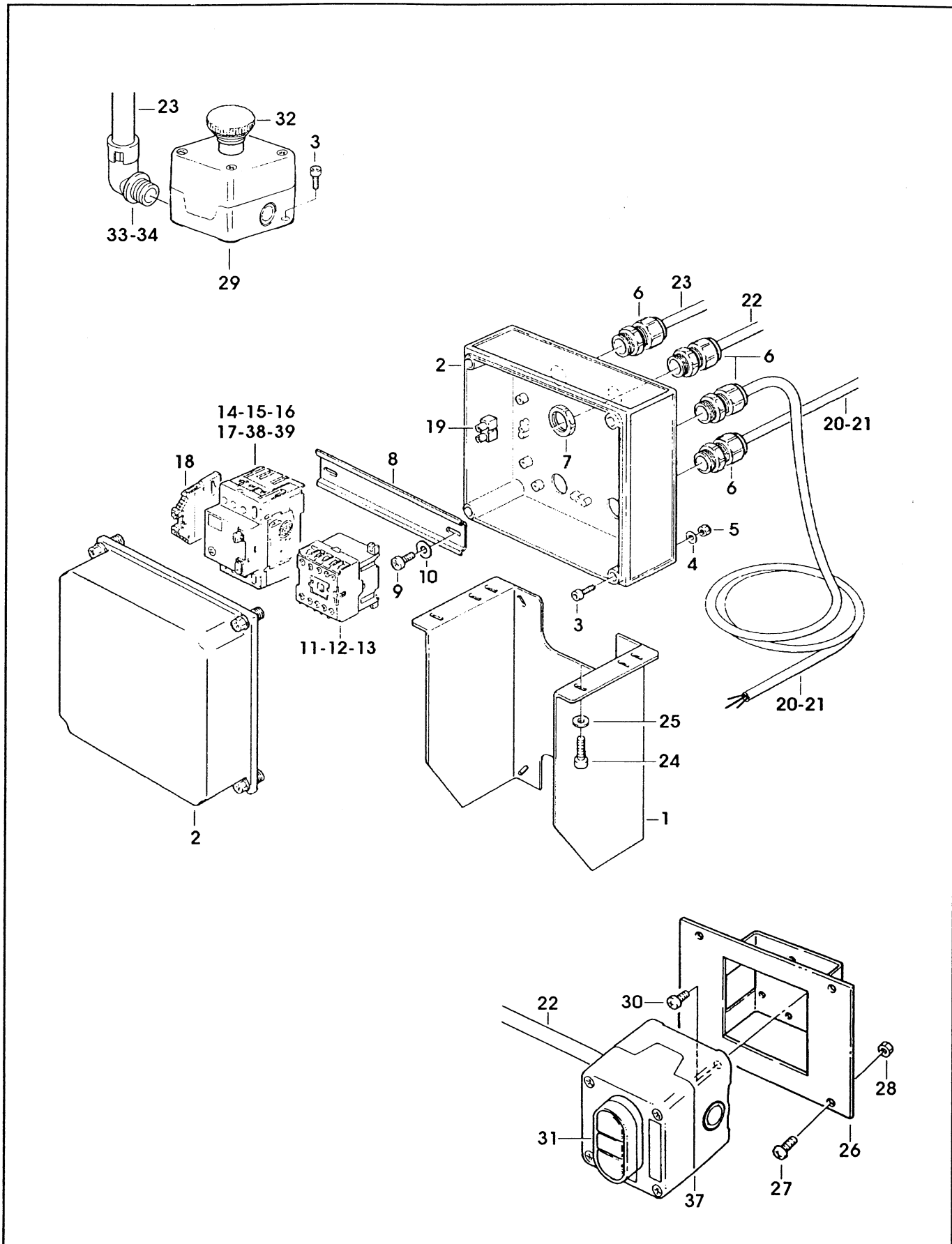


Figura	Descrizione figura	Magaz.	Codice	Descrizione
9456	IMPIANTO ELETTRICO	0	78811736905	62a-I ADJUSTABLE CASE SEALER

Posizione	Codice	Descrizione	U.M.	Quantita'
1	78809463793	SUPPORT - BOX	PZ	1
2	78809463801	BOX	PZ	1
3	78809463819	SCREW - SOC.HD, HEX.HD. M4X15	PZ	6
4	78800557403	WASHER PLAIN-METRIC 4MM NICK.	PZ	4
5	26100369144	NUT, PLASTIC INSERT M4	PZ	4
6	78807647157	CORD GRIP	PZ	4
7	78807652116	SET NUT GMP13.5	PZ	4
8	78809463827	GUIDE - MOUNTING	PZ	1
9	78802882080	SCREW - 6PX9,5	PZ	2
10	78801790185	WASHER-METRIC, PLAIN, M4 SPEC.	PZ	2
11	78810008306	CONTACTOR - CA4-5-10 220V 50HZ	PZ	1
12	78810008314	CONTACTOR - CA4-5-10 380V 50HZ	PZ	1
13	78809463835	CONTACTOR - SPRECHER+ SCHUH CA4-5-10 110V 60HZ	PZ	1
14	78807652231	SWITCH - THERMAL, KTA 3-25 1-1.6A	PZ	1
15	78807652272	SWITCH - THERMAL, KTA-3-25-0.63-1A	PZ	1
16	78810007555	SWITCH - KTA 3-25, 2.5-4 A	PZ	1
17	78807653783	SWITCH - THERMAL, SPRECHER + SCHUH KTA 3-25 1.6-2.5A	PZ	1
18	78809463843	CLAMP	PZ	1
19	78807649682	TERMINAL	PZ	0,08
20	78806080525	CABLE 4X1,5 5MT 3PH	PZ	1
21	78809104330	CABLE - 3X1.5 1-PHASE, 5 MT.	PZ	1
22	78807651761	CABLE FROR 07 3X0.75, 5 M.	PZ	1
23	78807652736	CABLE - 3X1, 5M	PZ	1
24	26100379572	SCREW SOC. HD. HEX HD. M6X16	PZ	4
25	26100000103	WASHER - FLAT M6	PZ	4
26	78810010393	SUPPORT - ON/OFF SWITCH	PZ	1
27	78801790664	SCREW - METRIC, M5X12	PZ	4
28	78801074176	NUT - METRIC, HEX STL. M5	PZ	4
29	78807651944	BOX - E-STOP, YELLOW ALLEN BRADLEY	PZ	1
30	78801792579	SCREW-PHILLIS HEAD, M4X10	PZ	2
31	78809463868	SWITCH - ON/OFF, DM3N-C-01/10 ALLEN BRADLEY	PZ	1
32	26101458458	E-STOP - /40, W/ LATCH+CONTACT BLOCK, 800EM-MTS44-3LX01	PZ	1
33	78812964431	UNION - ELBOW	PZ	1
34	78812964308	NUT - M16x1.5	PZ	1
37	78811448964	BOX - ON/OFF, GREY ALLEN BRADLEY	PZ	1
38	78811989652	SWITCH - KTA 3-25, 4-6.3 A.	PZ	1
39	78811446000	SWITCH - THERMAL, KTA3-25 6.3-10A	PZ	1



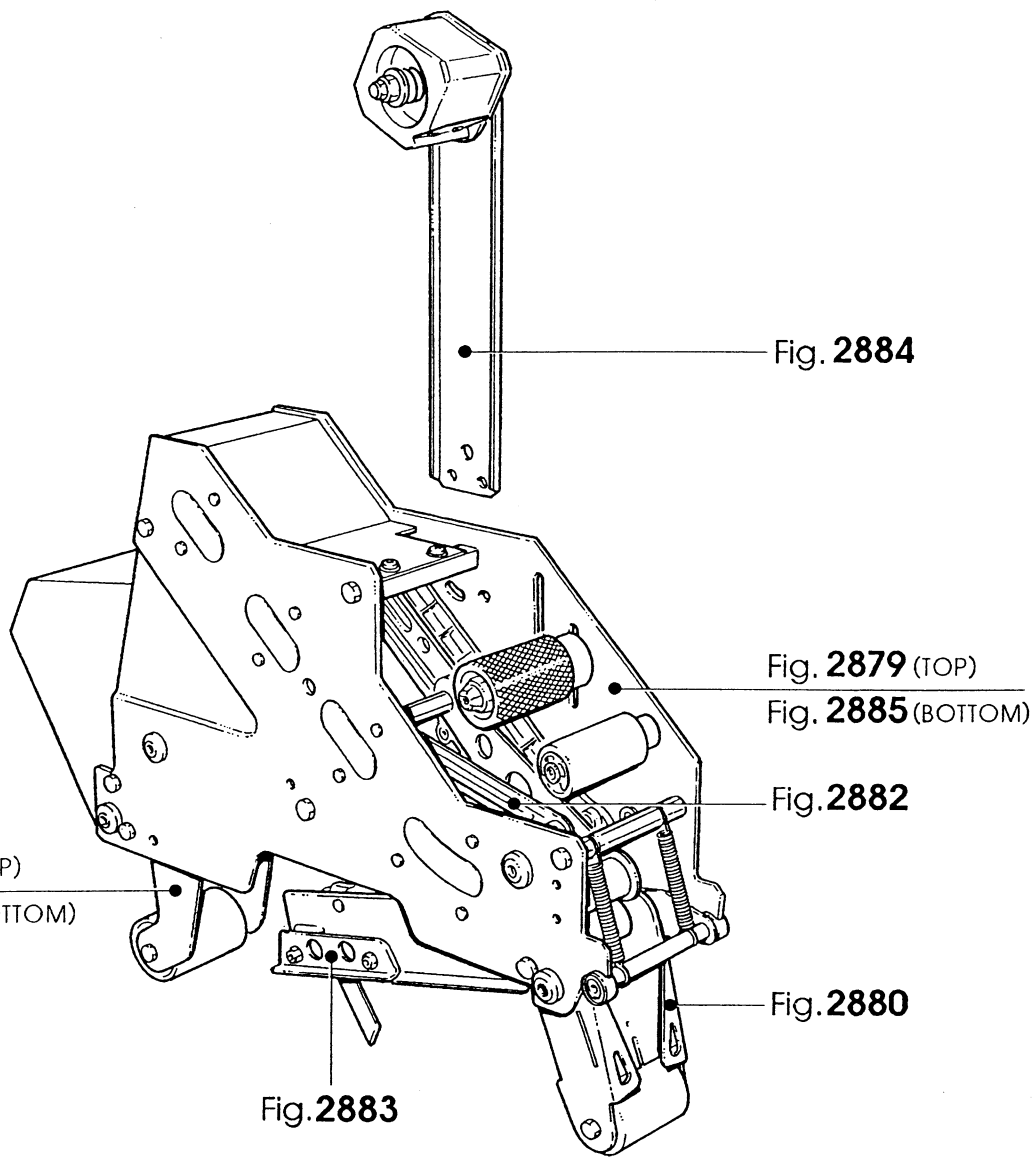
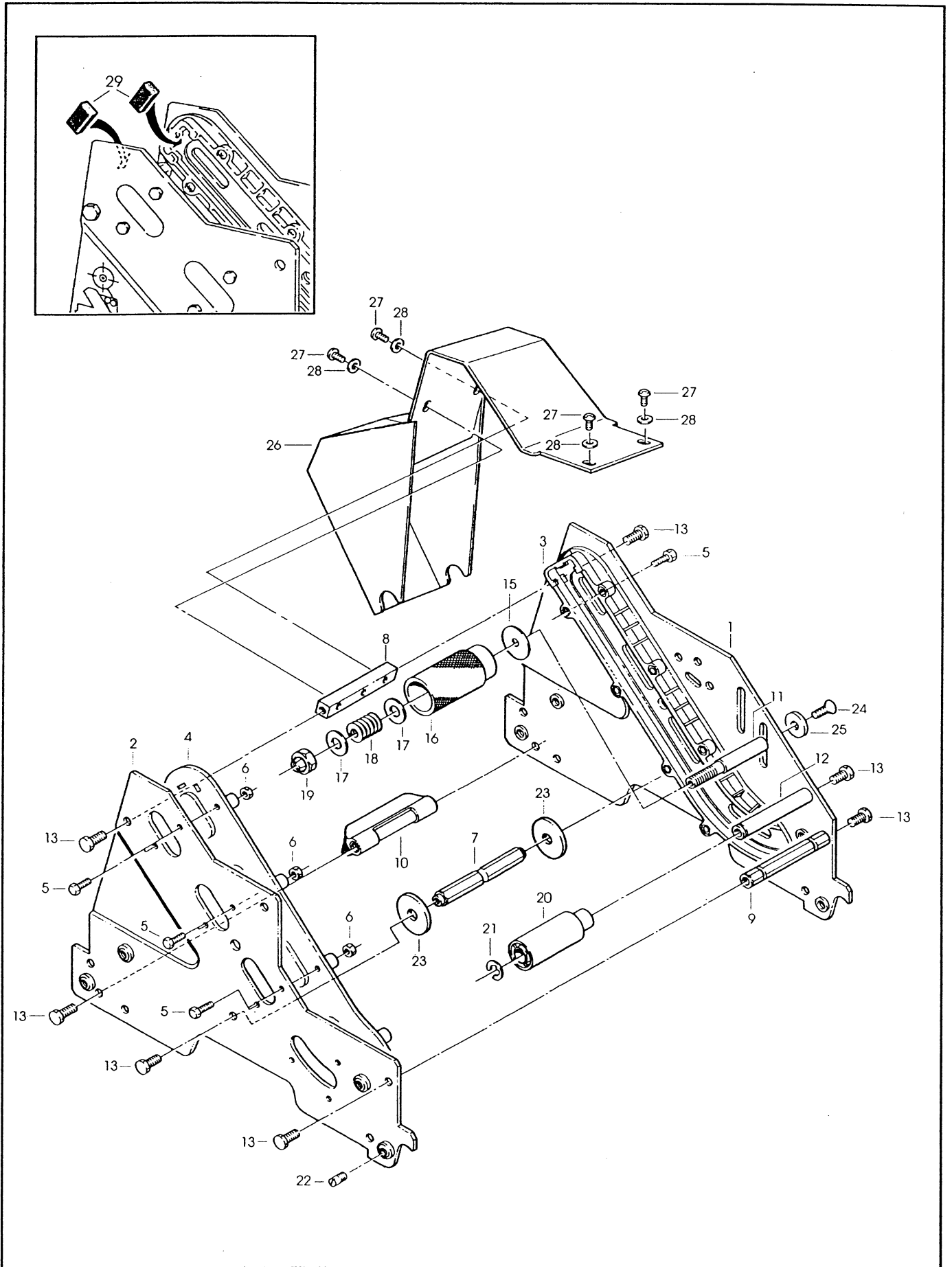


Figura	Descrizione figura	Magaz.	Codice	Descrizione
2879	GRUPPO SPALLE	0	78811408281	ACCUGLIDE II - 2", UPPER TYPE 39600

Posizione	Codice	Descrizione	U.M.	Quantita`
1	78807013863	FRAME - TAPE MOUNT UPPER ASS.Y	PZ	1
2	78807013871	FRAME - FRONT UPPER ASS.Y	PZ	1
3	78806841439	GUIDE - #1	PZ	1
4	78806841447	GUIDE - #2	PZ	1
5	83000273363	SCREW - HEX HD M4X14 ZINC.PL	PZ	18
6	78801074168	NUT-METRIC, HEX, STEEL M4	PZ	18
7	78807012519	SPACER - SPRING	PZ	1
8	78805487648	SPACER - 10X10X90MM	PZ	1
9	78805265606	SPACER - FRONT	PZ	1
10	78806079360	BRUSH ASSY	PZ	1
11	78805265648	SHAFT - TENSION ROLLER	PZ	1
12	78805265689	SHAFT - WRAP ROLLER	PZ	1
13	26100358295	SCREW HEX.HD.M6X12	PZ	9
15	78810010096	WASHER - SPECIAL	PZ	1
16	78805265655	ROLLER - TOP TENSION	PZ	1
17	26100455109	WASHER - PLAIN, M10	PZ	2
18	78805265671	SPRING - COMPRESSION	PZ	1
19	78801790771	NUT - SELF-LOCKING M10X1	PZ	1
20	78805265697	ROLLER - WRAP	PZ	1
21	26100016133	RING - RETAINING 10DIN6799	PZ	1
22	78807645003	STUD - MOUNTING	PZ	4
23	78807652421	STOP - CUTOFF FRAME	PZ	2
24	78806081796	SCREW-FLAT HD HEX M6X20	PZ	1
25	78807654773	WASHER - SPECIAL /6.5X20X4	PZ	1
26	78810010476	GUARD-HEAD	PZ	1
27	78801790664	SCREW - METRIC, M5X12	PZ	4
28	78800557411	WASHER - FLAT, M5	PZ	4
29	78807647348	BUMPER	PZ	2

=====  
 ===== Data 27/05/2003 =====





**K13-3M (TOP)**

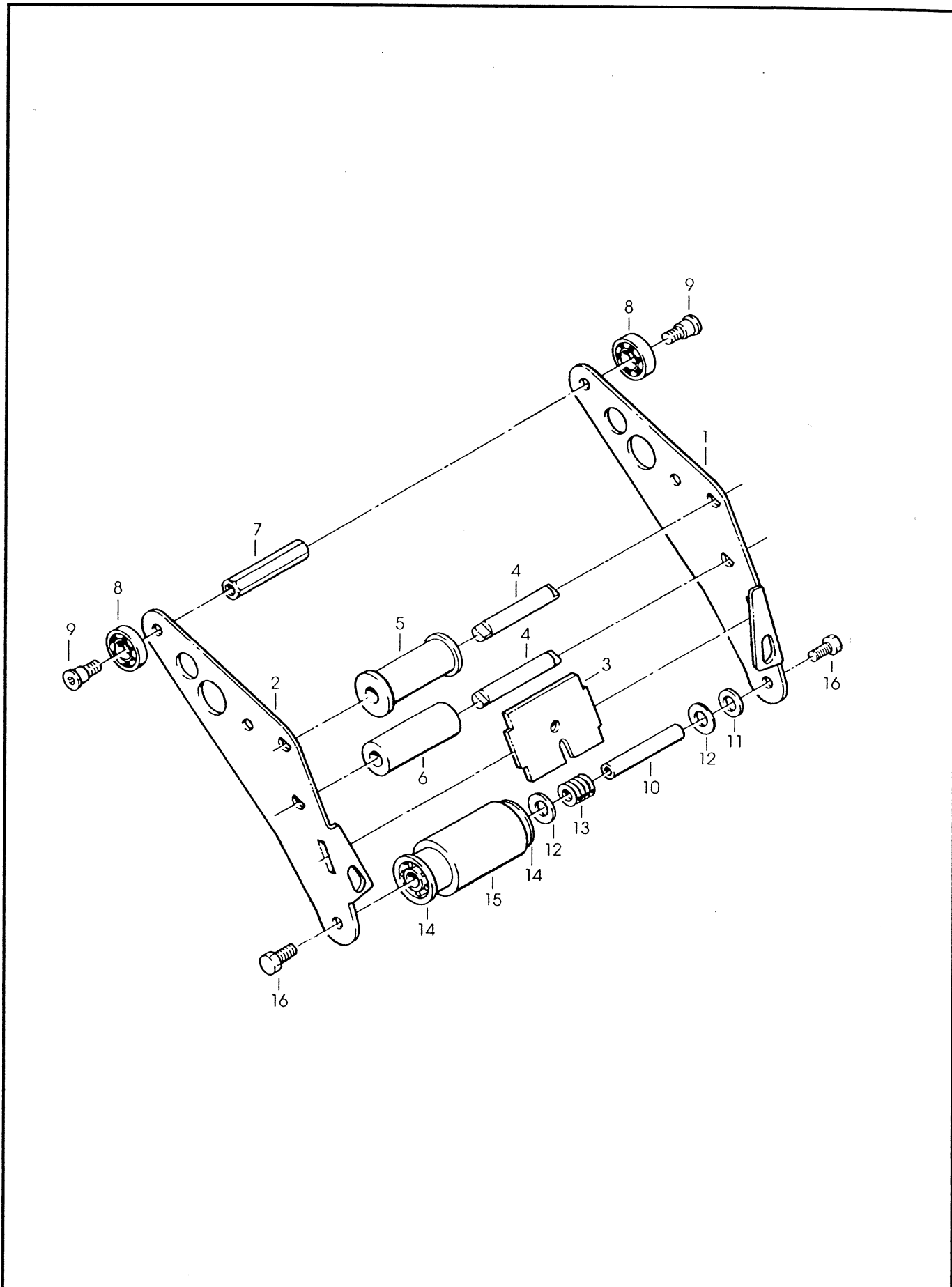
Отт. 96

**Fig. 2879**

Figura	Descrizione figura	Magaz.	Codice	Descrizione
2880	GRUPPO ENTRATA	0	78811408281	ACCUGLIDE II - 2", UPPER TYPE 39600

Posizione	Codice	Descrizione	U.M.	Quantita'
1	78807012063	ARM - APPLYING, R/H	PZ	1
2	78807012071	ARM - APPLYING, L/H	PZ	1
3	78807012212	PLATE - TAPE	PZ	1
4	78807013095	SHAFT - ROLLER	PZ	2
5	78807013673	ROLLER - KNURLED ASS'Y	PZ	1
6	78807012667	ROLLER - WRAP	PZ	1
7	78805265804	SPACER - REAR	PZ	1
8	78801790821	BEARING-SPECIAL 30MM	PZ	2
9	78801791068	SCREW-BEARING SHOULDER	PZ	2
10	78805265754	SHAFT - 10x60 W/HEXAGON	PZ	1
11	78801790748	WASHER-NYLON 15MM	PZ	1
12	78805265663	WASHER - FRICTION	PZ	2
13	78805265671	SPRING - COMPRESSION	PZ	1
14	78806083958	BUSHING-APPLYING ROLLER	PZ	1
15	78805761794	ROLLER - APPLYING	PZ	1
16	26100358295	SCREW HEX.HD.M6X12	PZ	2

Data 29/01/98 -



**K13-3M**

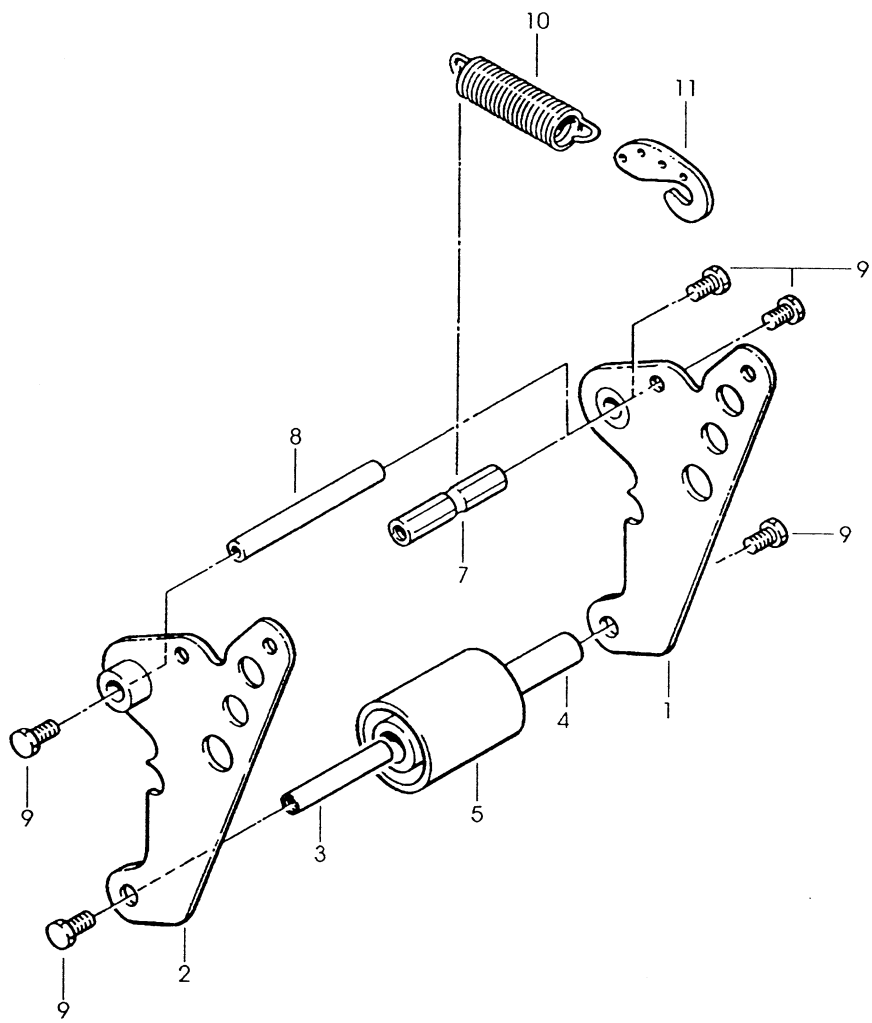
Giu. 96

**Fig.2880**

Figura	Descrizione figura	Magaz.	Codice	Descrizione
2881	GRUPPO USCITA	0	000000K13TB	ACCUGLIDE HEAD 2" K13 TOP TYPE B

Posizione	Codice	Descrizione	U.M.	Quantita'
1	78807013921	BUFFING ARM SUB ASS.Y	PZ	1
2	78807013913	BUFFING ARM SUB ASSY	PZ	1
3	78805265754	SHAFT - ROLLER, 10X60	PZ	1
4	78805265861	BUSHING - BUFFING ROLLER	PZ	1
5	78805761786	ROLLER - BUFFING NM	PZ	1
7	78807012204	SPACER - SPRING	PZ	1
8	78801791092	SHAFT-10X90MM	PZ	1
9	26100358295	SCREW HEX.HD.M6X12	PZ	6
10	78807012741	SPRING - UPPER	PZ	1
11	78807012444	HOLDER - SPRING	PZ	1

=====  
 ===== Data 04/07/96



**K13-3M** (TOP)

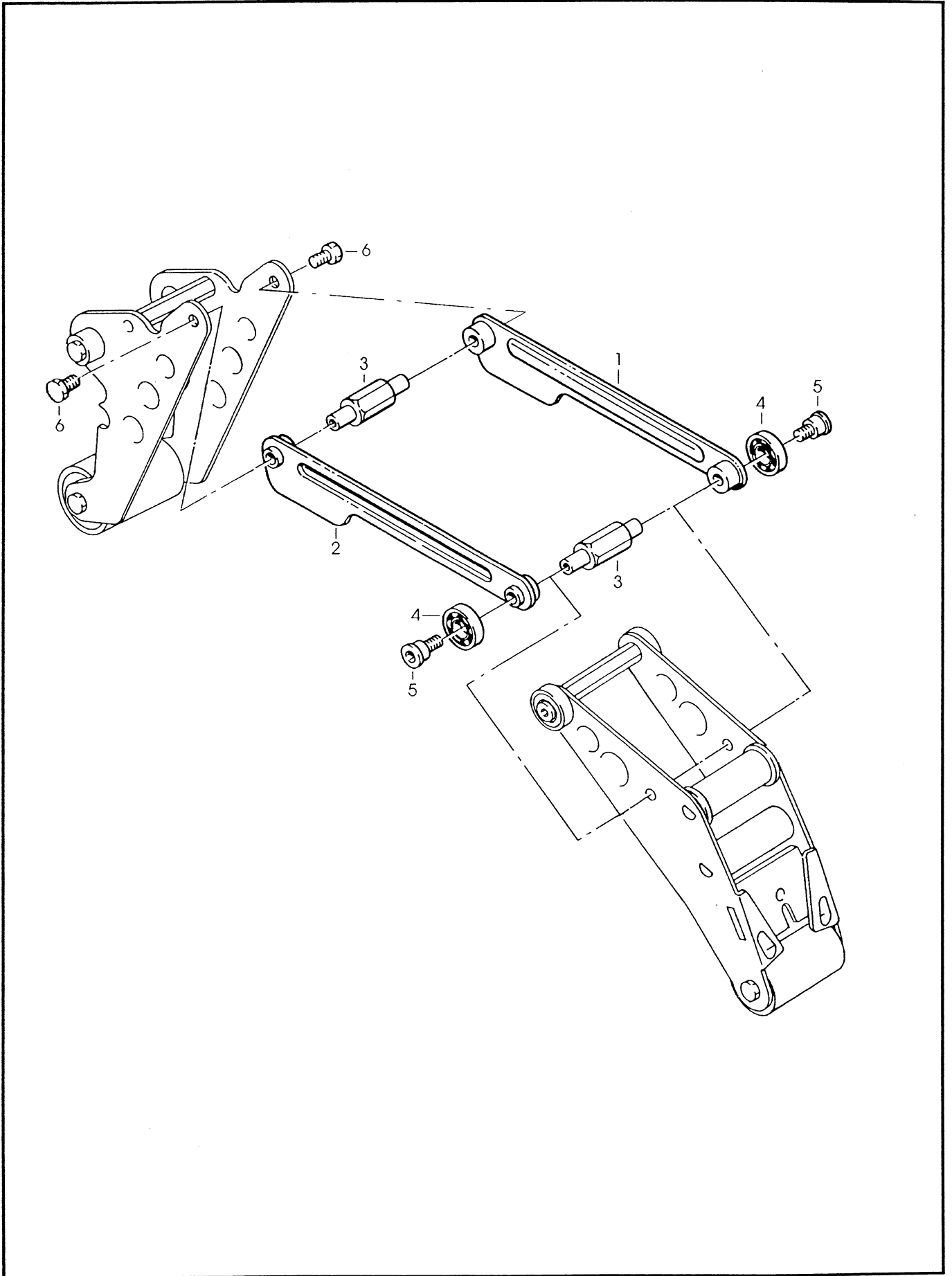
Giu. 96

Fig. **2881**

Figura	Descrizione figura	Magaz.	Codice	Descrizione
2882	GRUPPO LEVE	0	000000K13TB	ACCUGLIDE HEAD 2" K13 TOP TYPE B

Posizione	Codice	Descrizione	U.M.	Quantita'
1	78807013889	LINK - ARM BUSHING ASS.Y	PZ	1
2	78807013897	LINK - ARM BUSHING ASS.Y	PZ	1
3	78807012717	SHAFT - PIVOT	PZ	2
4	78801790821	BEARING-SPECIAL 30MM	PZ	2
5	78801791068	SCREW-BEARING SHOULDER	PZ	2
6	26100358287	SCREW - SPEC., HEX. HD. M6X10	PZ	2

=====  
===== Data 04/07/96



**K13-3M**

Lug. 96

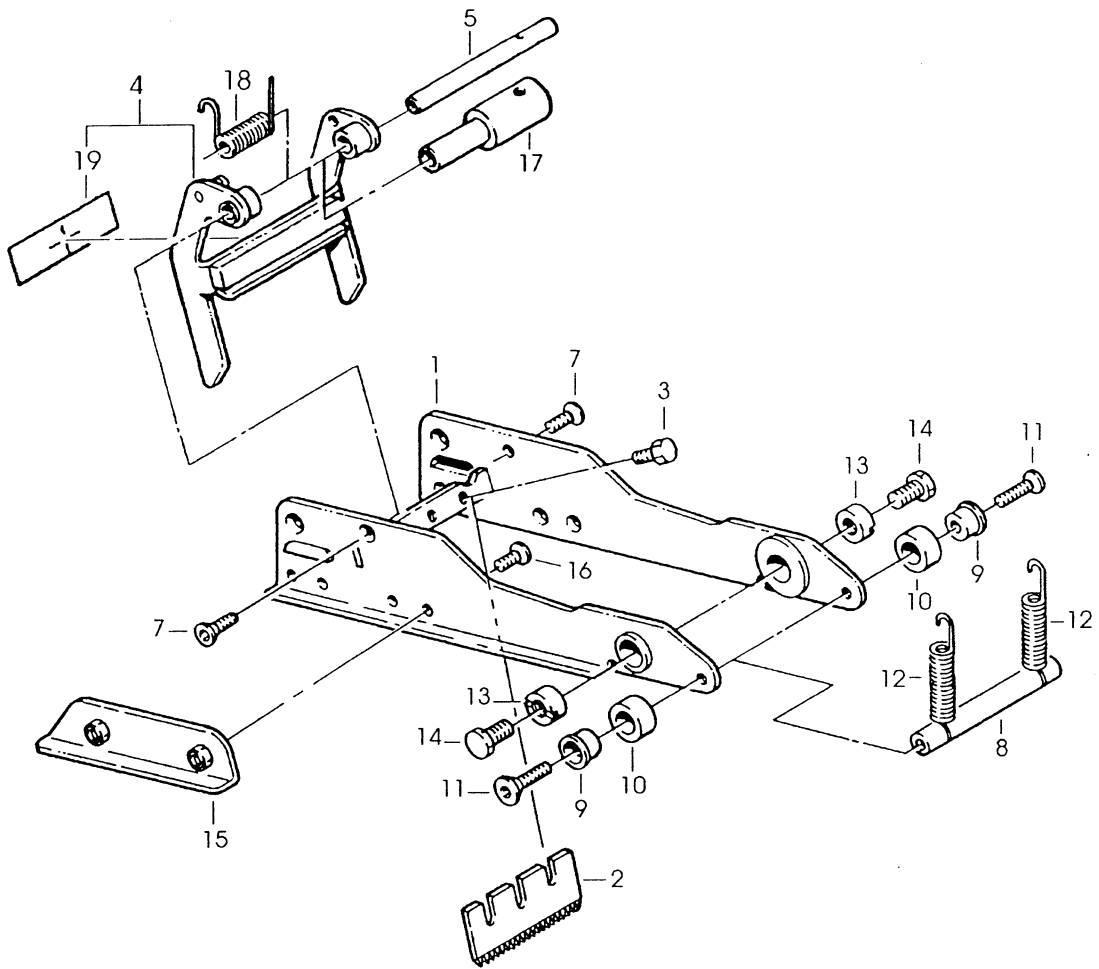
**Fig.2882**

Figura	Descrizione figura	Magaz.	Codice	Descrizione
2883	GRUPPO PORTALAMA	0	78811408299	ACCUGLIDE II - 2", LOWER TYPE 39600

Posizione	Codice	Descrizione	U.M.	Quantita'
1	78807012170	FRAME - CUTOFF WELDMENT	PZ	1
2	78801791738	KNIFE - 65mm/2.56 Inch	PZ	1
3	26100258172	SCREW - HEX HD M5X8 ZINC.PL	PZ	2
4	78807013715	GUARD - BLADE ASS'Y	PZ	1
5	78805265978	SHAFT-BLADE GUARD	PZ	1
7	26100547582	SCREW - FLAT HD, SOC.DR. M4X10	PZ	2
8	78801791357	SHAFT - SPACER	PZ	1
9	78805266000	SPACER	PZ	2
10	78807012691	BUMPER	PZ	2
11	26100547574	SCREW - FLAT HD, SOC.DR. M5X20	PZ	2
12	78805266026	SPRING - CUTTER	PZ	2
13	78801791324	PIVOT-CUTTER LEVER	PZ	2
14	26100358287	SCREW - SPEC., HEX. HD. M6X10	PZ	2
15	78807012162	SLIDE - EXTENSION	PZ	2
16	26100865745	SCREW - FLAT HD, PHIL.DR.M4X10	PZ	4
17	78811370317	BUSHING - 59.5 mm LONG	PZ	1
18	78811370309	SPRING - TORSION	PZ	1
19	78807013350	LABEL - WARNING, SHARP KNIFE	PZ	1

Data 25/03/98 =





K13-3M

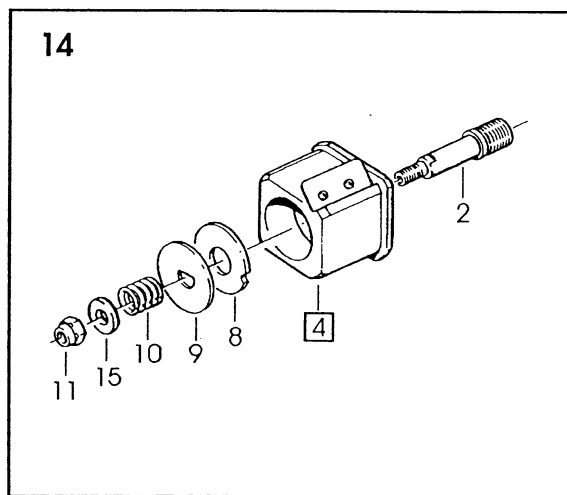
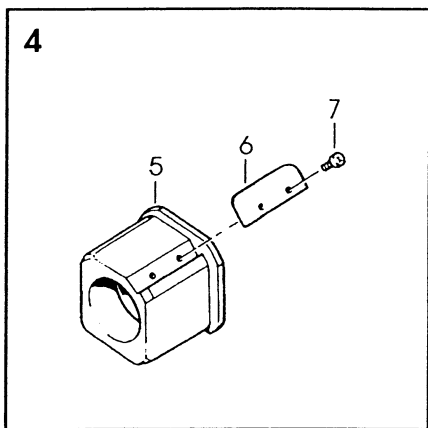
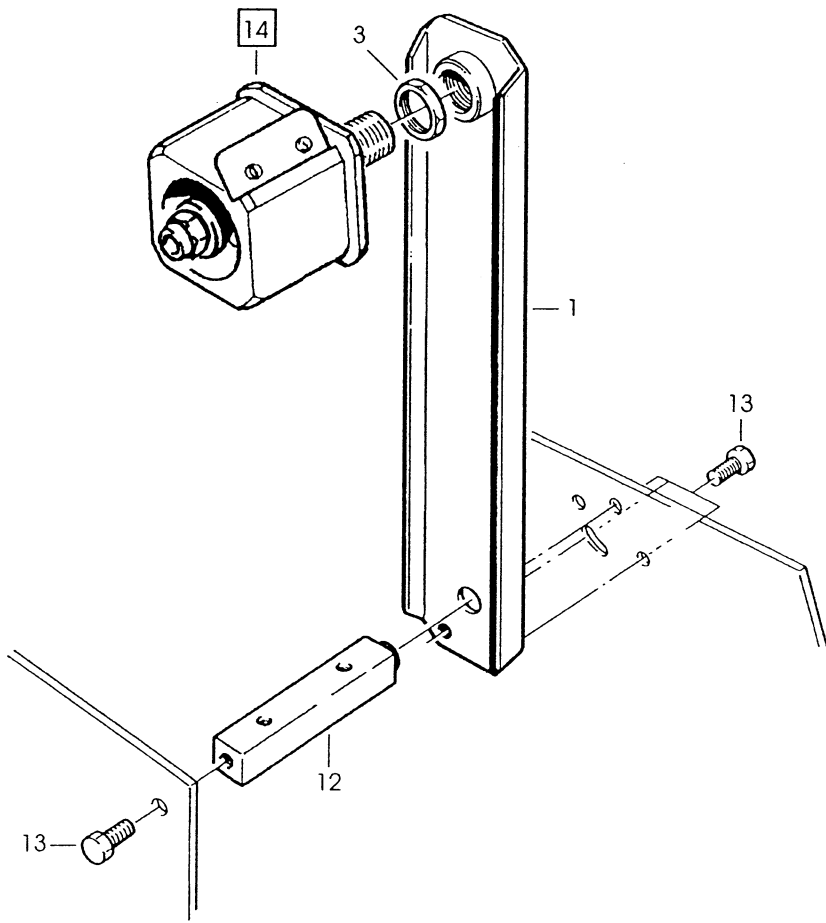
Mar. 98

Fig. 2883

Figura	Descrizione figura	Magaz.	Codice	Descrizione
2884	GRUPPO PORTAROTOLO	0	00000K13TB	ACCUGLIDE HEAD 2" K13 TOP TYPE B

Posizione	Codice	Descrizione	U.M.	Quantita'
1	78807013954	BRACKET - BUSHING ASS.Y	PZ	1
2	78807645193	SHAFT - TAPE DRUM	PZ	1
3	78801791696	NUT-M18X1	PZ	1
4	78807015694	TAPE DRUM ASSY - 2" WIDE	PZ	1
5	78805267495	TAPE DRUM	PZ	1
6	78805262686	LEAF SPRING	PZ	1
7	26100257539	SCREW-SELF TAPPING	PZ	2
8	78806081721	WASHER-FRICTION	PZ	1
9	78805262710	WASHER-TAPE DRUM	PZ	1
10	78810010484	SPRING - CORE HOLDER	PZ	1
11	78801790771	NUT - SELF-LOCKING M10X1	PZ	1
12	78810010468	SPACER - BRACKET	PZ	1
13	26100358295	SCREW HEX.HD.M6X12	PZ	4
14	78806084741	TAPE DRUM ASS.Y 2" HEAD W/O BRACKET/LOCK PLATE	PZ	1
15	26100455109	WASHER - PLAIN, M10	PZ	1

=====  
Data 09/07/96



**K13-3M**

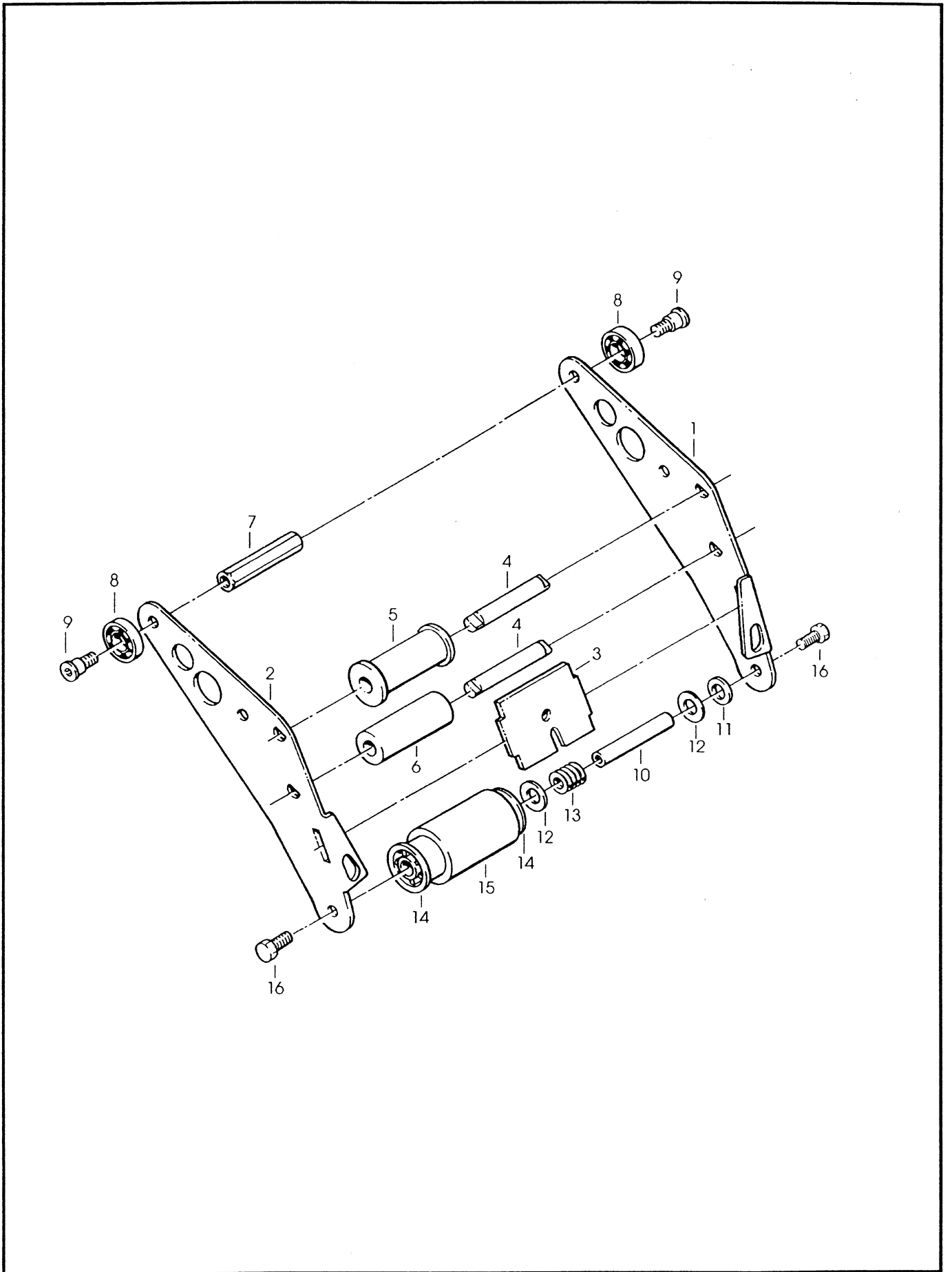
Lug. 96

**Fig. 2884**

Figura	Descrizione figura	Magaz.	Codice	Descrizione
2880	GRUPPO ENTRATA	0	78811408299	ACCUGLIDE II - 2", LOWER TYPE 39600

Posizione	Codice	Descrizione	U.M.	Quantita'
1	78807012063	ARM - APPLYING, R/H	PZ	1
2	78807012071	ARM - APPLYING, L/H	PZ	1
3	78807012212	PLATE - TAPE	PZ	1
4	78807013095	SHAFT - ROLLER	PZ	2
5	78807013673	ROLLER - KNURLED ASS'Y	PZ	1
6	78807012667	ROLLER - WRAP	PZ	1
7	78805265804	SPACER - REAR	PZ	1
8	78801790821	BEARING-SPECIAL 30MM	PZ	2
9	78801791068	SCREW-BEARING SHOULDER	PZ	2
10	78805265754	SHAFT - 10x60 W/HEXAGON	PZ	1
11	78801790748	WASHER-NYLON 15MM	PZ	1
12	78805265663	WASHER - FRICTION	PZ	2
13	78805265671	SPRING - COMPRESSION	PZ	1
14	78806083958	BUSHING-APPLYING ROLLER	PZ	1
15	78805761794	ROLLER - APPLYING	PZ	1
16	26100358295	SCREW HEX.HD.M6X12	PZ	2

Data 29/01/98 =



**K13-3M**

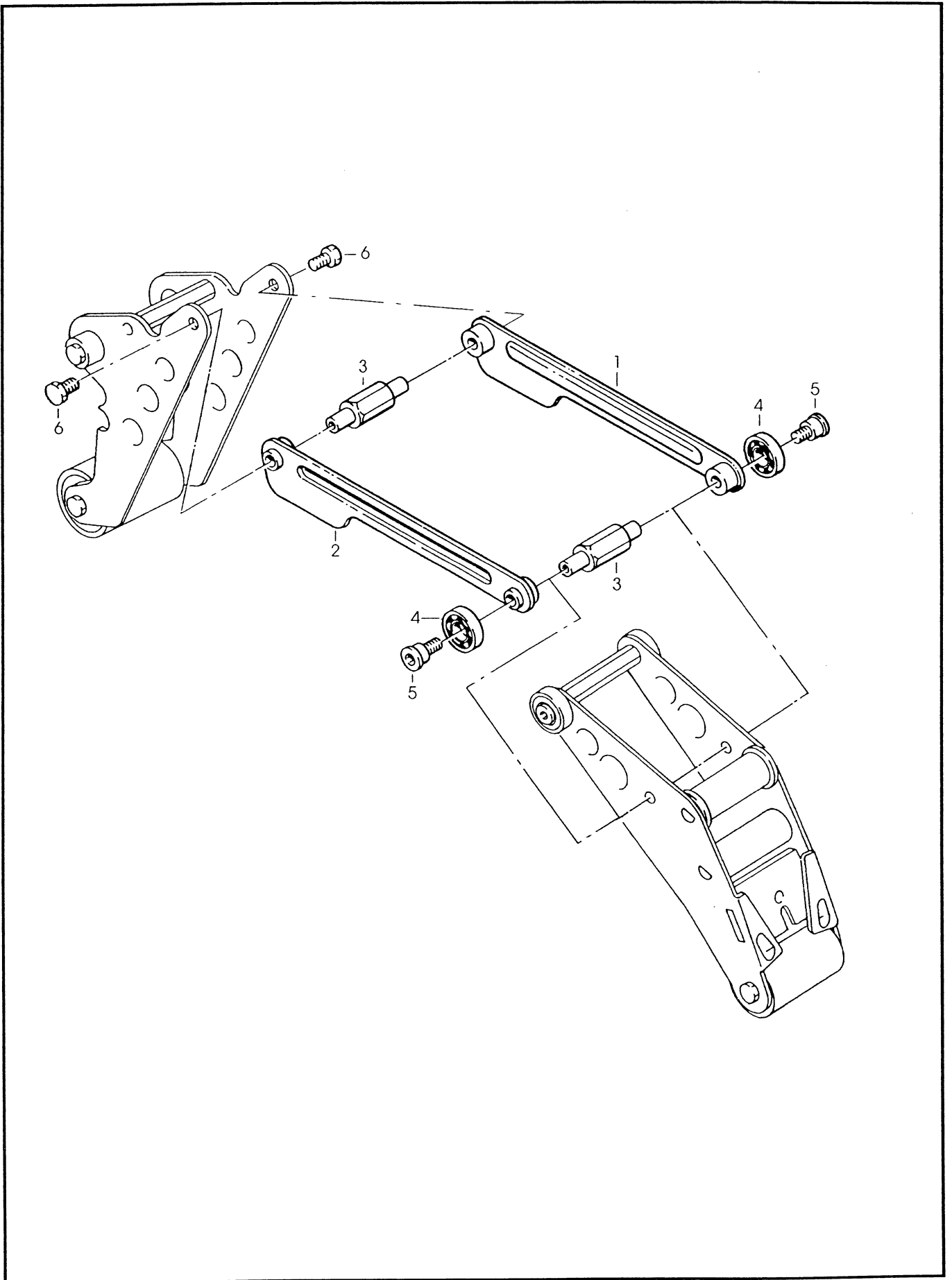
Giu. 96

**Fig. 2880**

Figura	Descrizione figura	Magaz.	Codice	Descrizione
2882	GRUPPO LEVE	0	000000K138B	ACCUGLIDE HEAD 2" K13 BOTTOM TYPE B

Posizione	Codice	Descrizione	U.M.	Quantita'
1	78807013889	LINK - ARM BUSHING ASS.Y	PZ	1
2	78807013897	LINK - ARM BUSHING ASS.Y	PZ	1
3	78807012717	SHAFT - PIVOT	PZ	2
4	78801790821	BEARING-SPECIAL 30MM	PZ	2
5	78801791068	SCREW-BEARING SHOULDER	PZ	2
6	26100358287	SCREW - SPEC., HEX. HD. M6X10	PZ	2

===== Data 04/07/96



**K13-3M**

Lug. 96

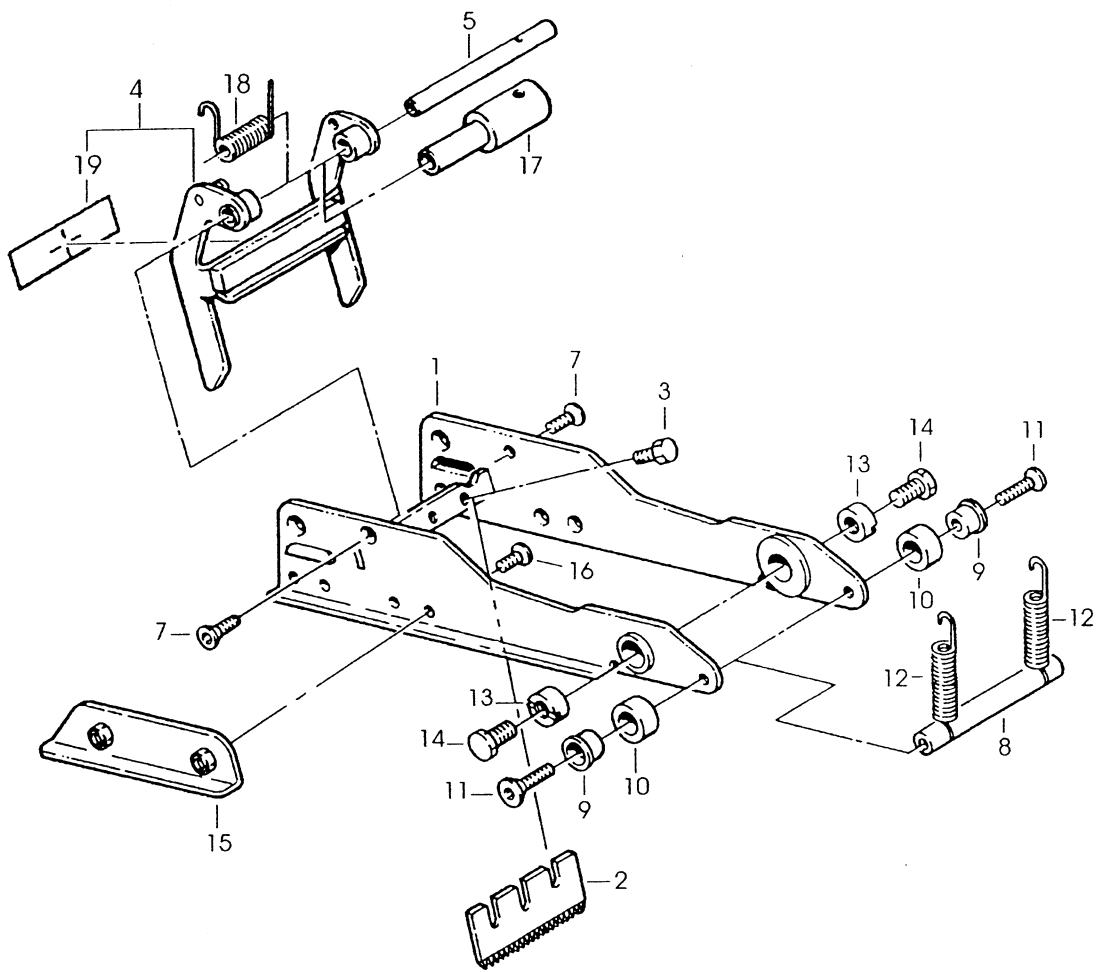
**Fig. 2882**

Figura	Descrizione figura	Magaz.	Codice	Descrizione
2883	GRUPPO PORTALAMA	0	78811408281	ACCUGLIDE II - 2", UPPER TYPE 39600

Posizione	Codice	Descrizione	U.M.	Quantita'
1	78807012170	FRAME - CUTOFF WELDMENT	PZ	1
2	78801791738	KNIFE - 65mm/2.56 Inch	PZ	1
3	26100258172	SCREW - HEX HD M5X8 ZINC.PL	PZ	2
4	78807013715	GUARD - BLADE ASS'Y	PZ	1
5	78805265978	SHAFT-BLADE GUARD	PZ	1
7	26100547582	SCREW - FLAT HD. SOC.DR. M4X10	PZ	2
8	78801791357	SHAFT - SPACER	PZ	1
9	78805266000	SPACER	PZ	2
10	78807012691	BUMPER	PZ	2
11	26100547574	SCREW - FLAT HD. SOC.DR. M5X20	PZ	2
12	78805266026	SPRING - CUTTER	PZ	2
13	78801791324	PIVOT-CUTTER LEVER	PZ	2
14	26100358287	SCREW - SPEC., HEX. HD. M6X10	PZ	2
15	78807012162	SLIDE - EXTENSION	PZ	2
16	26100865745	SCREW - FLAT HD, PHIL.DR.M4X10	PZ	4
17	78811370317	BUSHING - 59.5 mm LONG	PZ	1
18	78811370309	SPRING - TORSION	PZ	1
19	78807013350	LABEL - WARNING, SHARP KNIFE	PZ	1

Data 25/03/98





K13-3M

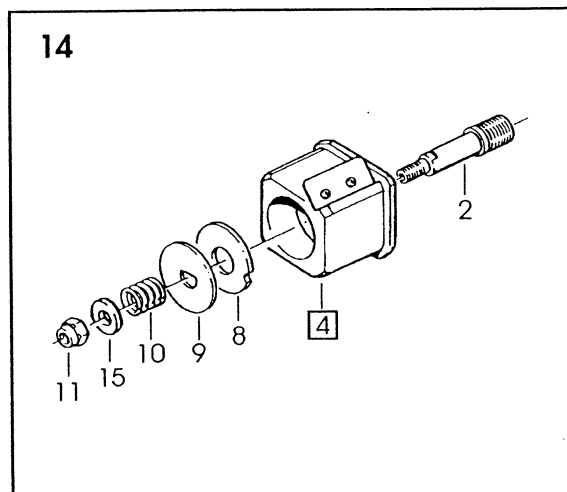
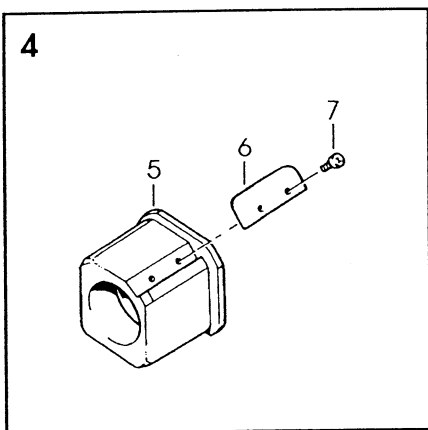
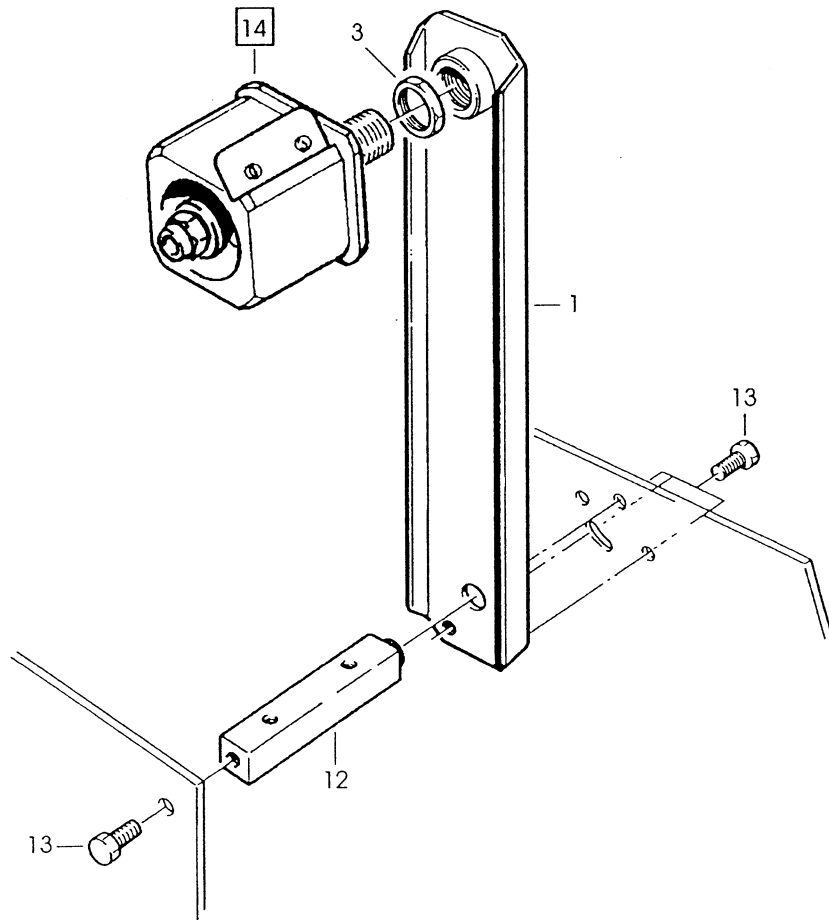
Mar. 98

Fig. 2883

Figura	Descrizione figura	Magaz.	Codice	Descrizione
2884	GRUPPO PORTAROTOLO		0 00000K13BB	ACCUGLIDE HEAD 2" K13 BOTTOM TYPE B

Posizione	Codice	Descrizione	U.M.	Quantita'
1	78807013954	BRACKET - BUSHING ASS.Y	PZ	1
2	78807645193	SHAFT - TAPE DRUM	PZ	1
3	78801791696	NUT-M18X1	PZ	1
4	78807015694	TAPE DRUM ASSY - 2" WIDE	PZ	1
5	78805267495	TAPE DRUM	PZ	1
6	78805262686	LEAF SPRING	PZ	1
7	26100257539	SCREW-SELF TAPPING	PZ	2
8	78806081721	WASHER-FRICTION	PZ	1
9	78805262710	WASHER-TAPE DRUM	PZ	1
10	78810010484	SPRING - CORE HOLDER	PZ	1
11	78801790771	NUT - SELF-LOCKING M10X1	PZ	1
12	78810010468	SPACER - BRACKET	PZ	1
13	26100358295	SCREW HEX.HD.M6X12	PZ	4
14	78806084741	TAPE DRUM ASS.Y 2" HEAD W/O BRACKET/LOCK PLATE	PZ	1
15	26100455109	WASHER - PLAIN, M10	PZ	1

=====  
Data 09/07/96



**K13-3M**

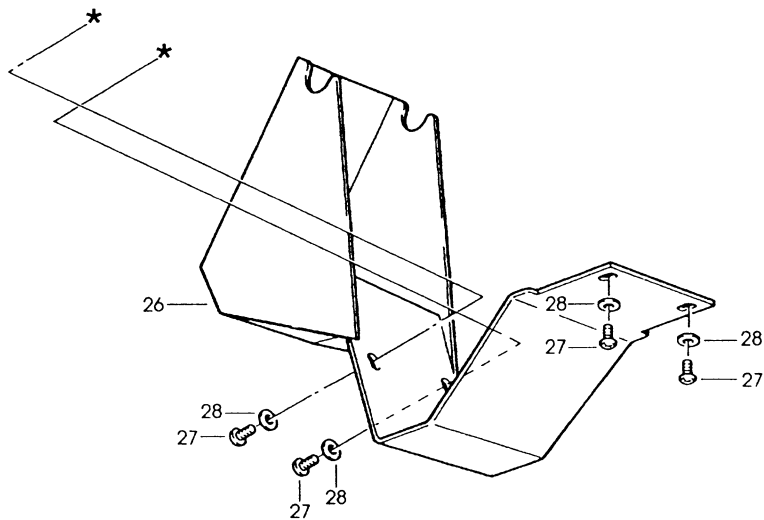
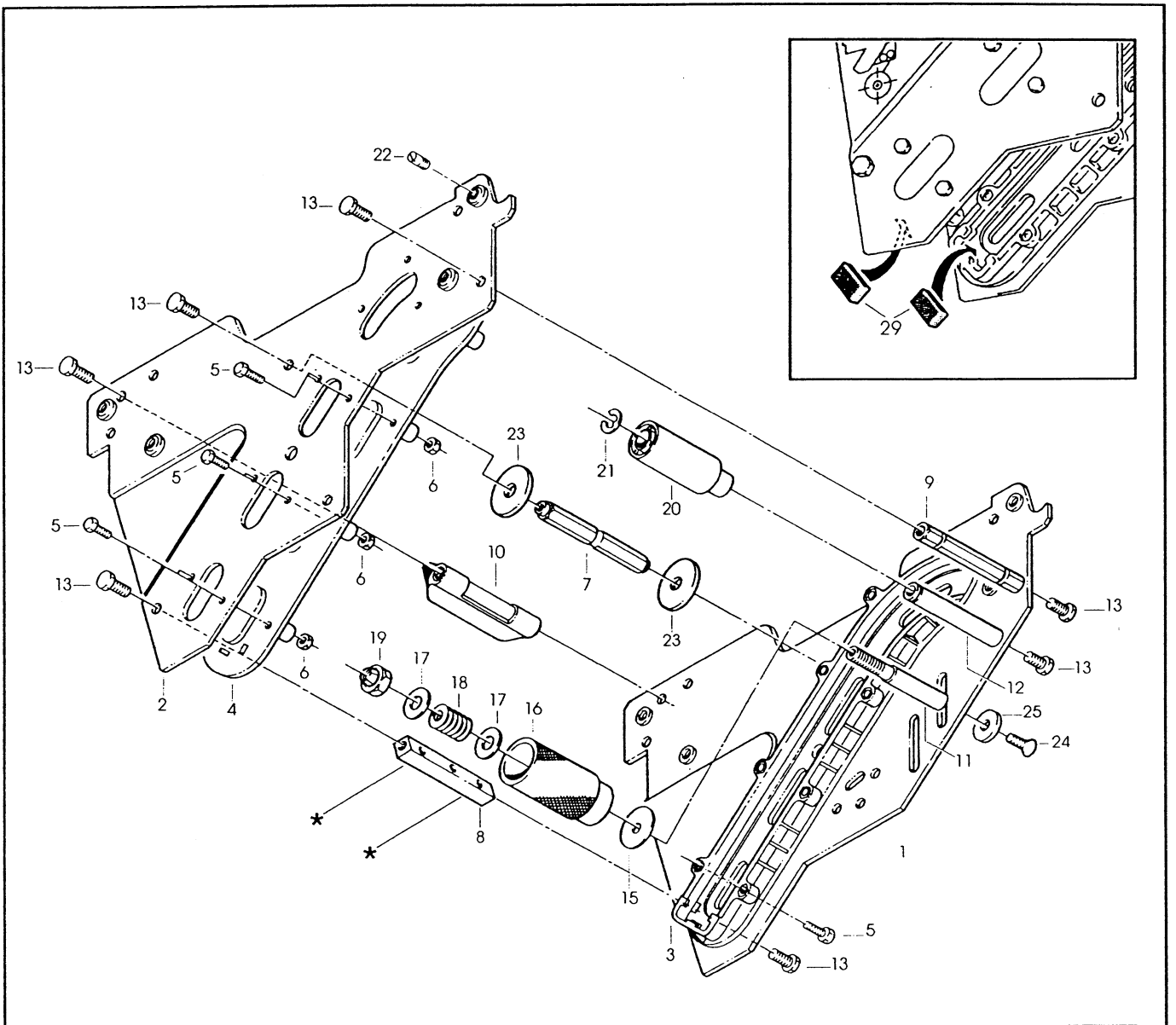
Lug. 96

Fig. **2884**

Figura	Descrizione figura	Magaz.	Codice	Descrizione
2885	GRUPPO SPALLE	0	78811408299	ACCUGLIDE II - 2", LOWER TYPE 39600

Posizione	Codice	Descrizione	U.M.	Quantita`
1	78807013699	FRAME - TAPE MOUNT LOWER ASSY	PZ	1
2	78807013707	FRAME - FRONT LOWER ASSY	PZ	1
3	78806841447	GUIDE - #2	PZ	1
4	78806841439	GUIDE - #1	PZ	1
5	83000273363	SCREW - HEX HD M4X14 ZINC.PL	PZ	18
6	78801074168	NUT-METRIC, HEX, STEEL M4	PZ	18
7	78807012519	SPACER - SPRING	PZ	1
8	78805487648	SPACER - 10X10X90MM	PZ	1
9	78805265606	SPACER - FRONT	PZ	1
10	78806079360	BRUSH ASSY	PZ	1
11	78805265648	SHAFT - TENSION ROLLER	PZ	1
12	78805265689	SHAFT - WRAP ROLLER	PZ	1
13	26100358295	SCREW HEX.HD.M6X12	PZ	9
15	78810010096	WASHER - SPECIAL	PZ	1
16	78805266067	ROLLER - TENSION BOTTOM	PZ	1
17	26100455109	WASHER - PLAIN, M10	PZ	2
18	78805265671	SPRING - COMPRESSION	PZ	1
19	78801790771	NUT - SELF-LOCKING M10X1	PZ	1
20	78805265697	ROLLER - WRAP	PZ	1
21	26100016133	RING - RETAINING 10DIN6799	PZ	1
22	78807645003	STUD - MOUNTING	PZ	4
23	78807652421	STOP - CUTOFF FRAME	PZ	2
24	78806081796	SCREW-FLAT HD HEX M6X20	PZ	1
25	78807654773	WASHER - SPECIAL /6.5X20X4	PZ	1
26	78810010476	GUARD-HEAD	PZ	1
27	78801790664	SCREW - METRIC, M5X12	PZ	4
28	78800557411	WASHER - FLAT, M5	PZ	4
29	78807647348	BUMPER	PZ	2

=====  
 ===== Data 27/05/2003 =====



**K13-3M (BOTTOM)**

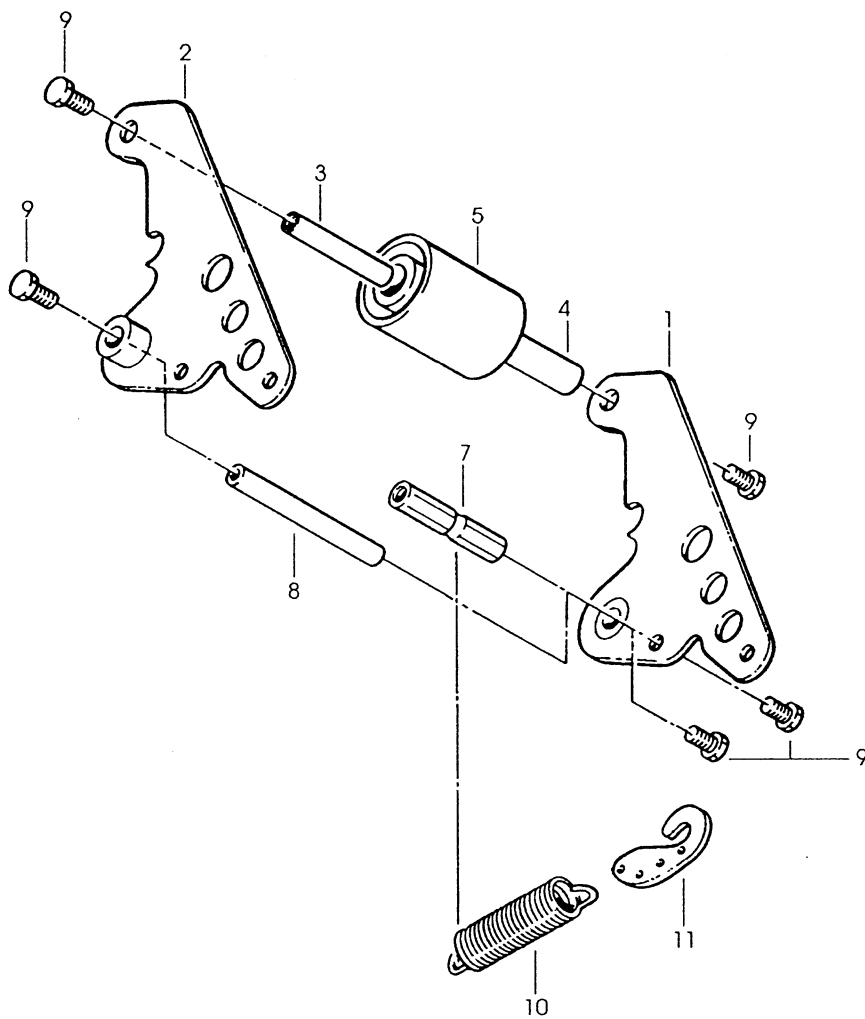
Ott. 96

**Fig. 2885**

Figura	Descrizione figura	Magaz.	Codice	Descrizione
2886	GRUPPO USCITA	0	000000K1388	ACCUGLIDE HEAD 2" K13 BOTTOM TYPE B

Posizione	Codice	Descrizione	U.M.	Quantita'
1	78807013913	BUFFING ARM SUB ASSY	PZ	1
2	78807013921	BUFFING ARM SUB ASS.Y	PZ	1
3	78805265754	SHAFT - ROLLER, 10X60	PZ	1
4	78805265861	BUSHING - BUFFING ROLLER	PZ	1
5	78805761786	ROLLER - BUFFING NM	PZ	1
7	78807012204	SPACER - SPRING	PZ	1
8	78801791092	SHAFT-10X90MM	PZ	1
9	26100358295	SCREW HEX.HD.M6X12	PZ	6
10	78807012733	SPRING - LOWER	PZ	1
11	78807012444	HOLDER - SPRING	PZ	1

=====  
===== Data 04/07/96



**K13-3M** (BOTTOM)

Giu. 96

Fig. **2886**