

Figura	Descrizione figura	Magaz.	Codice	Descrizione
2807	PORTAROTOLI	0	78811408828	700r-I RANDOM CASE SEALER Type 39600

Posizione	Codice	Descrizione	U.M.	Quantita'
1	78807646332	TAPE ROLL BRACKET ASSY	PZ	1
2	78807015652	TAPE DRUM BRACKET ASS.Y	PZ	1
3	78807015660	BRACKET - TAPE DRUM	PZ	1
4	78807013954	BRACKET - BUSHING ASS.Y	PZ	1
5	78807015686	CAP - BRACKET	PZ	1
6	78807645193	SHAFT - TAPE DRUM	PZ	2
7	78801791696	NUT-M18X1	PZ	2
8	78807015694	TAPE DRUM ASSY - 2" WIDE	PZ	2
9	78805267495	TAPE DRUM	PZ	2
10	78805262686	LEAF SPRING	PZ	2
11	26100257539	SCREW-SELF TAPPING	PZ	4
12	78806081721	WASHER-FRICTION	PZ	2
13	78805262710	WASHER-TAPE DRUM	PZ	2
14	78810010484	SPRING - CORE HOLDER	PZ	2
15	78801790771	NUT - SELF-LOCKING M10X1	PZ	2
16	78803203757	SCREW METRIC M6X16 HEX.HD.	PZ	4
17	78807012154	SPACER - STUD	PZ	1
18	26100000103	WASHER - FLAT M6	PZ	7
19	78801071693	SCREW-METRIC, M6X12, HEX HD.	PZ	3
20	78806084741	TAPE DRUM ASS.Y 2" HEAD W/O BRACKET/LOCK PLATE	PZ	2
21	78805265663	WASHER - FRICTION	PZ	2

=====
Data 24/02/97

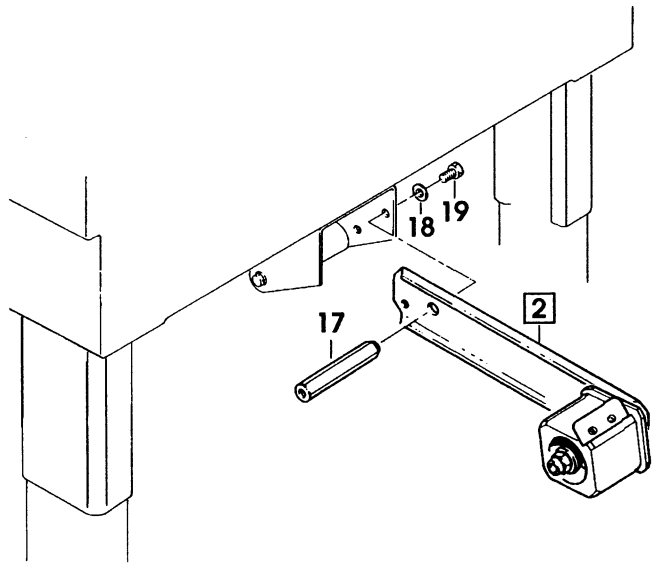
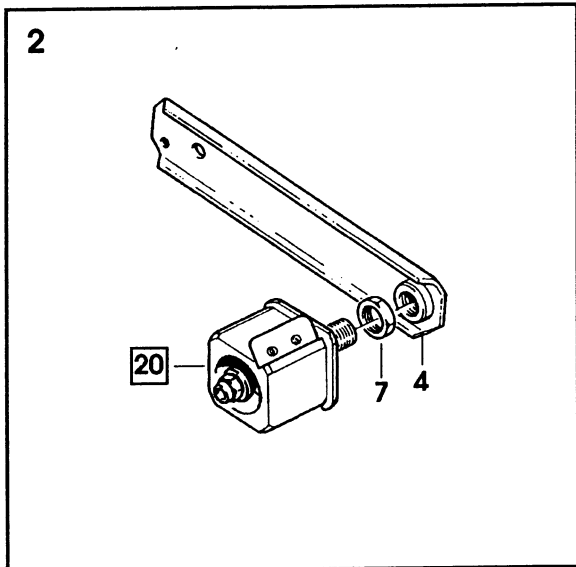
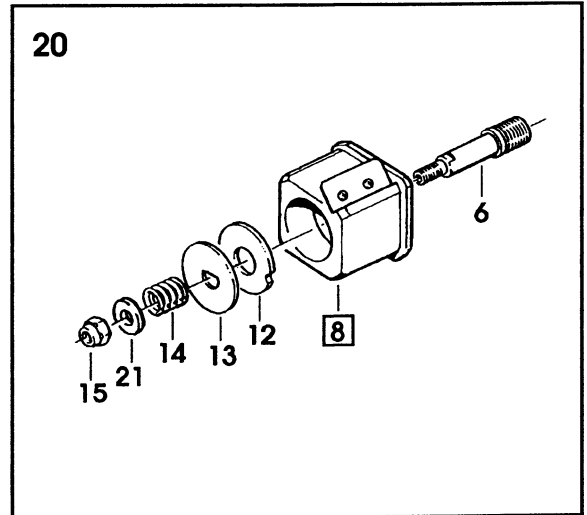
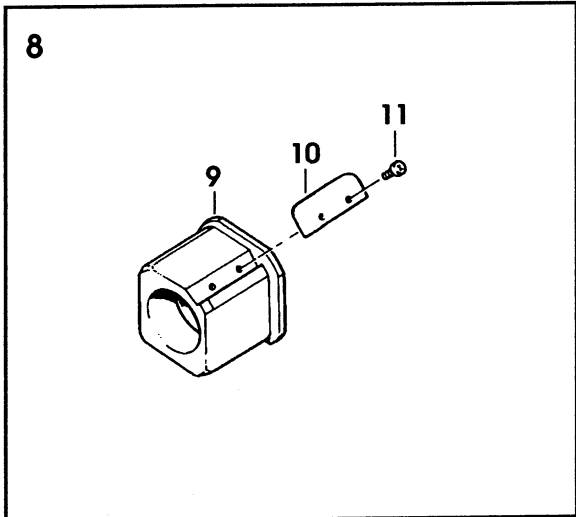
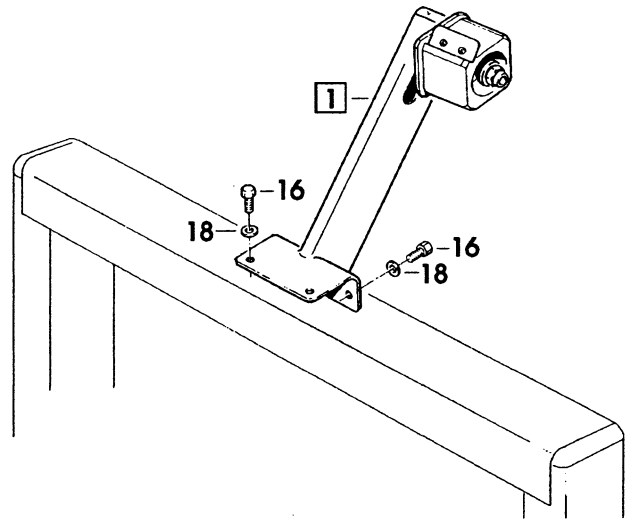
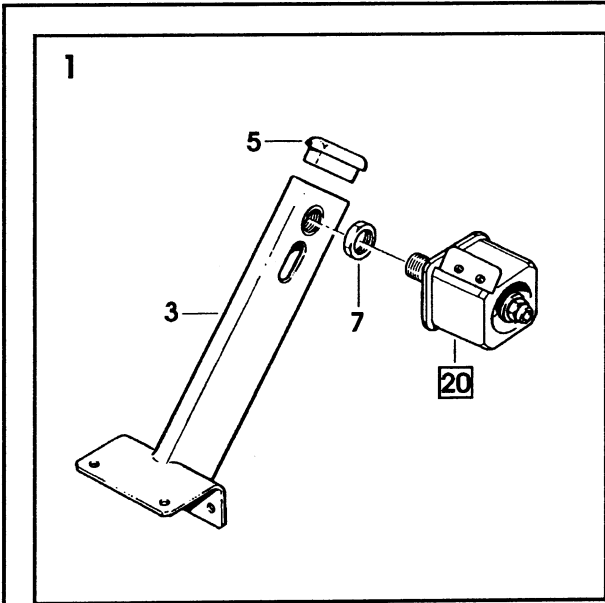


Figura	Descrizione figura	Magaz.	Codice	Descrizione
2919	CANALINA	0	78811408828	700r-I RANDOM CASE SEALER Type 39600

Posizione	Codice	Descrizione	U.M.	Quantita'
1	78809106608	HOUSING - WIRE	PZ	1
2	78807647025	GROMMET /28	PZ	1
3	26100379630	SCREW - SOC. HD. M8X16	PZ	2
4	78807646365	STRAP - WIRE	PZ	1
5	78801071636	SCREW-METRIC, M5X10, HEX.HD.	PZ	4
6	78800557411	WASHER - FLAT, M5	PZ	4
7	78801074176	NUT - METRIC, HEX STL. M5	PZ	4
8	78807645201	UNION PG13 - SLEEVE /16	PZ	2
9	78807645219	SLEEVING - WIRE, 900 MM /16	PZ	1
10	78806076267	CONNECTOR PG 11/12	PZ	1
11	78806084220	SLEEVING - 1,12 MT.	PZ	1
12	78806080293	CLAMP, 140X3,5	PZ	5
13	78807646415	COVER	PZ	1
14	78801071578	SCREW-HEX.HD. M4X10	PZ	4
15	78801790185	WASHER-METRIC, PLAIN, M4 SPEC.	PZ	4

=====
===== Data 24/02/97

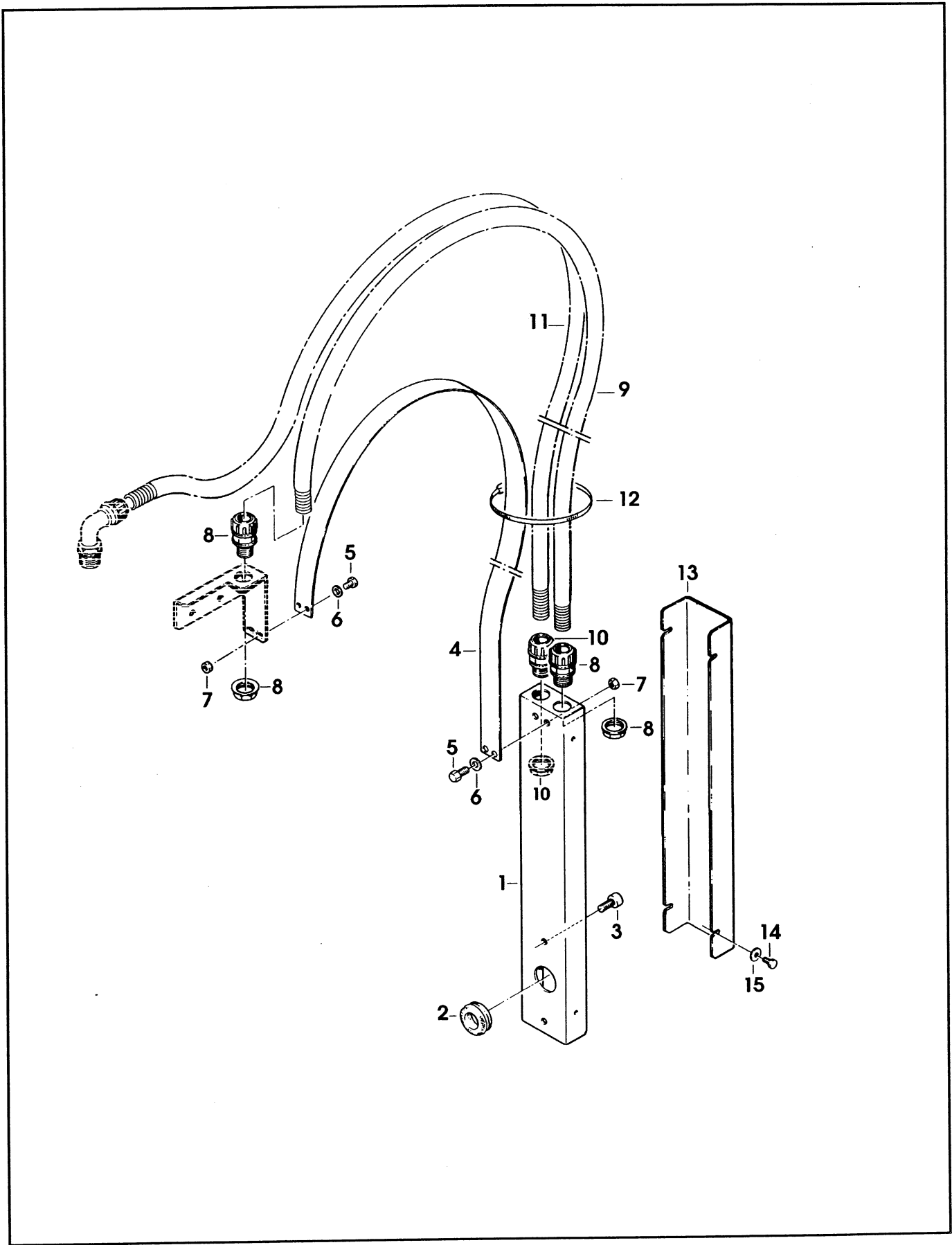


Figura	Descrizione figura	Magaz.	Codice	Descrizione
3437	BANCALE	0	78811408828	700r-I RANDOM CASE SEALER Type 39600

Posizione	Codice	Descrizione	U.M.	Quantita'
1	78809103209	CONVEYOR BED ASS.Y	PZ	1
2	78809103217	BED - CONVEYOR	PZ	1
3	78809103076	SUPPORT - DRIVE	PZ	2
4	26100358428	SCREW HEX.HD.M8X20	PZ	8
5	78801793189	WASHER-PLAIN-METRIC 8MM	PZ	12
6	78807653817	LEG ASS.Y - INNER, W/ STOP	PZ	4
7	78807653825	LEG - INNER	PZ	4
8	78806084808	PAD - FOOT	PZ	4
9	78805508674	SCREW HEX HD. M8X30	PZ	4
10	78801793130	NUT SELF LOCKING M8 NICK.PL.	PZ	4
11	78807653833	STOP - LEG	PZ	4
12	26100379630	SCREW - SOC. HD. M8X16	PZ	12
13	78806084816	LABEL - HEIGHT	PZ	4
14	78805266778	CLAMP - INNER	PZ	4
15	78805266760	CLAMP - OUTER	PZ	4
16	78807645359	BRACKET	PZ	2
17	78807646258	SCREW - SPECIAL M5X16	PZ	4
19	78801072097	SCREW, SOC.HD.M6X12	PZ	2
20	78807646209	PLANE - CONVEYOR BED	PZ	2
21	78806084865	BUSHING	PZ	4
22	78802323341	SCREW-SOC.HD., HEX. SOC.M6X25	PZ	4
23	78806084873	COVER - SWITCH	PZ	1
24	78806080871	SCREW, METRIC M5X10	PZ	4
25	78801074176	NUT - METRIC, HEX STL. M5	PZ	8
26	78806084881	SCREW - HEX.HD. M5X20	PZ	2
27	78804682173	WASHER-SPECIAL	PZ	4
28	78800557411	WASHER - FLAT, M5	PZ	4
29	78807645375	SCREW - SOC.HD. HEX.HD. M3X25	PZ	4
30	78807645383	WASHER - FLAT, M3	PZ	4
31	78805955172	NUT-SELF-LOCKING M3 ZINC. PL.	PZ	4
32	78807645177	END CAP /22X1	PZ	1
33	78807647017	CAP /28	PZ	2
34	78806081846	CAP /35X1,5	PZ	1
35	78807645367	CAP /45X1.5	PZ	2
36	78807647025	GROMMET /28	PZ	1
37	78806080608	CASTER ASS.Y /80	PZ	4
38	78806080616	CASTER /80	PZ	4
39	78806081242	SPACER - CASTER	PZ	4
40	78806076994	WASHER /12-45,5X4	PZ	4
41	78801790599	WASHER-FLAT FOR M12 SCREW	PZ	4
42	78806075327	NUT M12 SELF-LOCKING	PZ	4
43	78809107176	SUPPORT - R/H, FILTER ASSY	PZ	1
44	78809106137	SHAFT - VALVE	PZ	1
45	26100000103	WASHER - FLAT M6	PZ	1
46	78801074184	NUT - METRIC, HEX, STL., M6	PZ	1

=====
Data 24/02/97

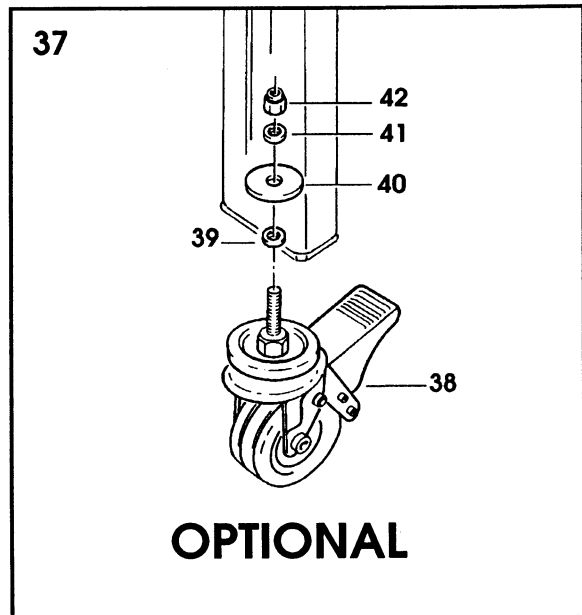
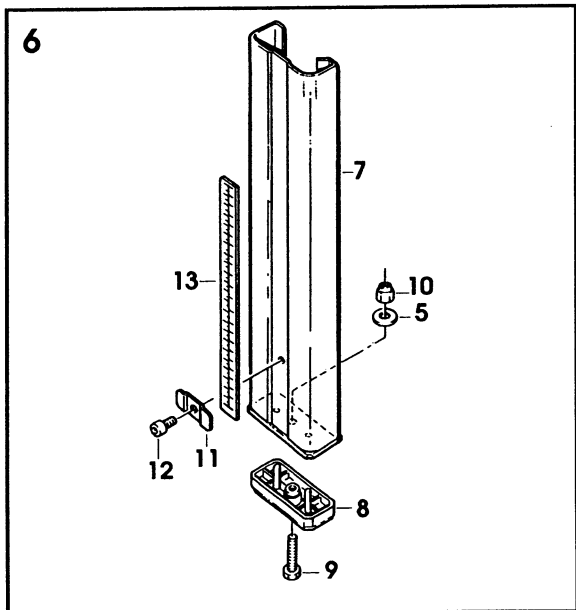
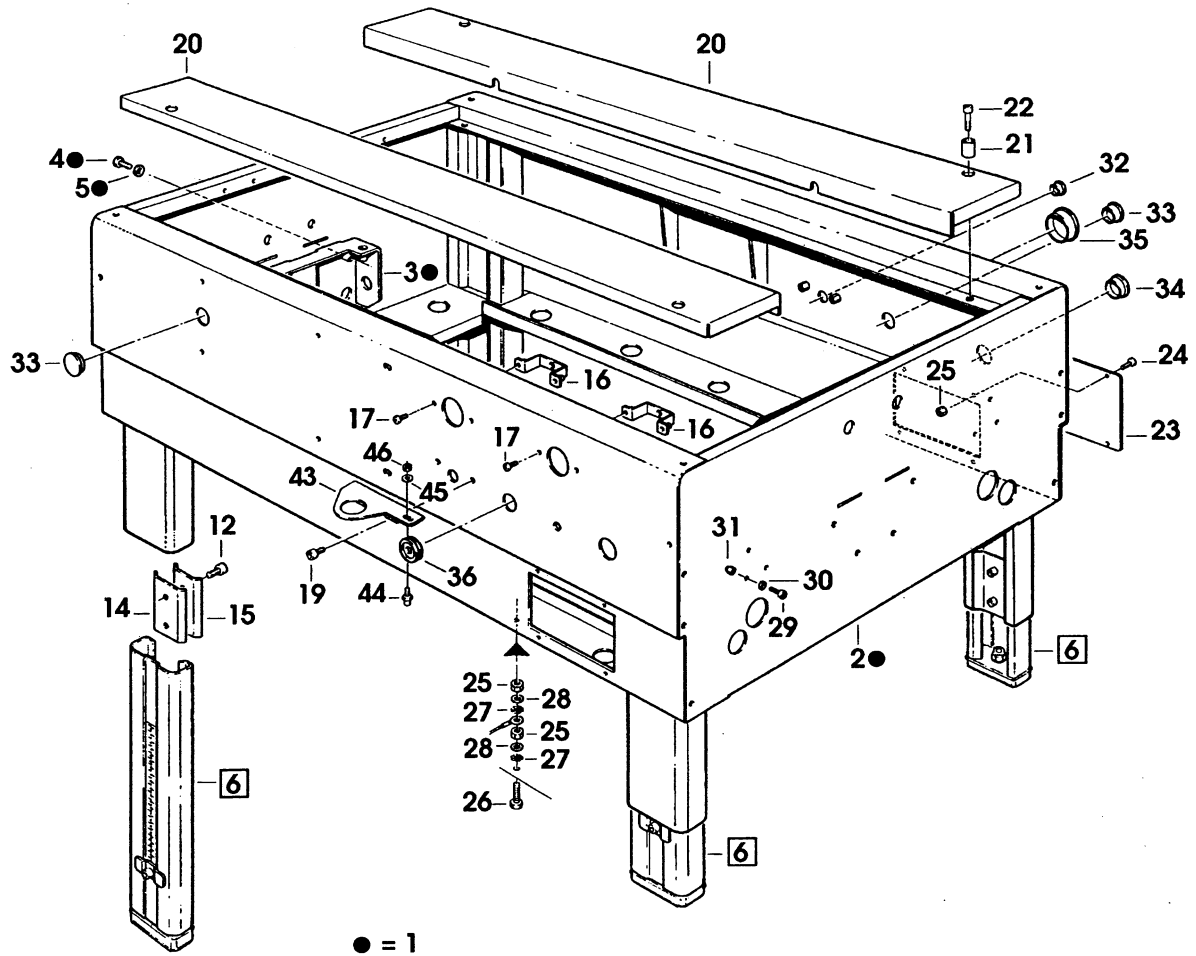


Figura	Descrizione figura	Magaz.	Codice	Descrizione
3439	IMPIANTO PNEUMATICO	0	78811408828	700r-I RANDOM CASE SEALER Type 39600

Posizione	Codice	Descrizione	U.M.	Quantita'
1	78807646639	CYLINDER - AIR /32X580+20	PZ	2
2	78809464577	CAP 1/8"	PZ	2
3	78809103134	ELBOW - 3199.08.10	PZ	4
4	78807646803	SCREW - CUSHIONING, CIL./32	PZ	2
5	78806080913	VALVE - FESTO R/O-3-PK-3	PZ	2
6	78807646647	UNION - FEMALE	PZ	1
7	78807646654	INDICATOR - VISUAL	PZ	1
8	26100559090	ELBOW	PZ	2
9	78805488380	GAUGE - AIR	PZ	1
10	78807646720	UNION - STRAIGHT, FEMALE	PZ	2
11	78809103506	UNION - SPECIAL	PZ	2
12	78809103142	FILTER - EAW 2000, W/O GAGE	PZ	1
13	26101445588	FILTER/REGULATOR W/METAL BOWL SMC EAW2000-F02D-2	PZ	1
14	78806078990	NIPPLE RA 012 1/4"-1/4"	PZ	1
15	78807646696	RIGHT VALVE EVHS-4500 F02-R X116 700r	PZ	1
16	78807646704	REDUCTION - 3/8"-1/8"	PZ	1
17	26100568901	MUFFLER	PZ	5
18	78809103159	ELBOW - 3199.08.13	PZ	1
19	78806079006	UNION	PZ	1
20	26100568976	HOSE CONNECTOR	PZ	1
21	78809104306	CLAMP - /14-24	PZ	1
22	78806078537	UNION - STRAIGHT	PZ	1
23	78807646712	GAUGE - PRESSURE	PZ	1
24	78807646738	REGULATOR - PRESSURE	PZ	1
25	26100569016	UNION STRAIGHT	PZ	1
26	78807646746	NIPPLE - 1/4" - 1/8"	PZ	1
27	78805956337	AIR DISTRIBUTOR	PZ	1
28	78809103167	UNION - STRAIGHT, 3101.08.10	PZ	1
29	26100568935	90 DEGREE ELBOW	PZ	2
30	78807646753	REGULATOR - 0.5-7 BAR , SMC EAR111-F02	PZ	1
31	78807646761	UNION	PZ	1
32	78805757354	FITTING - REDUCER	PZ	1
33	78805507569	UNION - ROTATING	PZ	1
34	78807646779	VALVE V2A 5120-01	PZ	2
35	78801794260	ELBOW - 90*,1/8" MALE X 1/8" MALE	PZ	1
36	78807646787	VALVE - QUICK EXHAUST	PZ	1
37	78809103175	UNION - TEE, 3198.08.10	PZ	1
38	26100569107	UNION STRAIGHT	PZ	3
39	78805757321	FITTING - ELBOW	PZ	2
40	78806076903	CAP	PZ	1
41	78807646795	UNION - TEE	PZ	1
42	78811986666	TUBE - AIR, TU0425B, 5 MT	PZ	1
43	78811986674	TUBE - AIR, TU0604B, 5 MT	PZ	1
44	78811986682	TUBE - AIR, TU0805B, 5 MT	PZ	1
999	78806081754	SEAL KIT-CYLINDER MEGLIANI /32	PZ	1

Data 18/12/1998

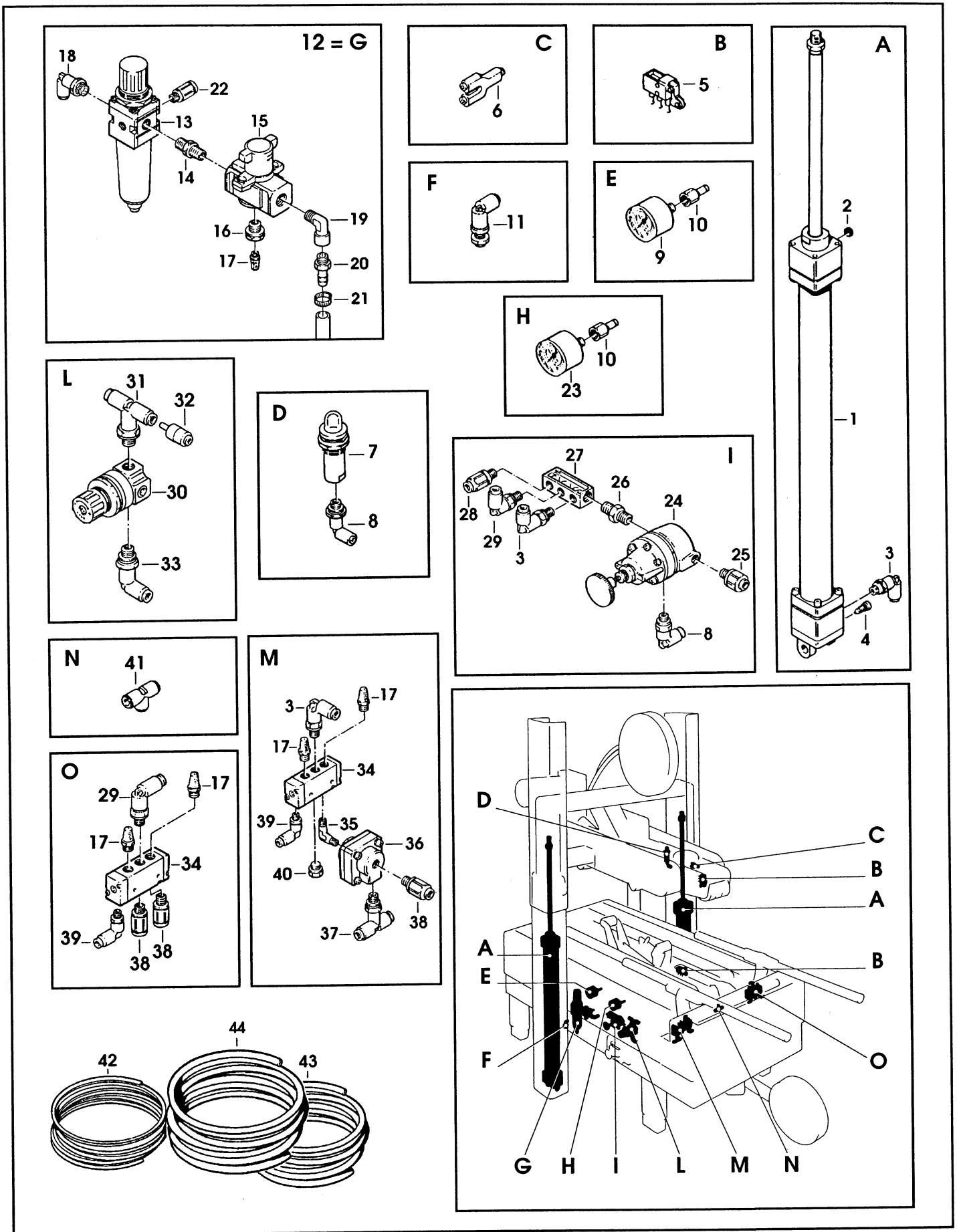
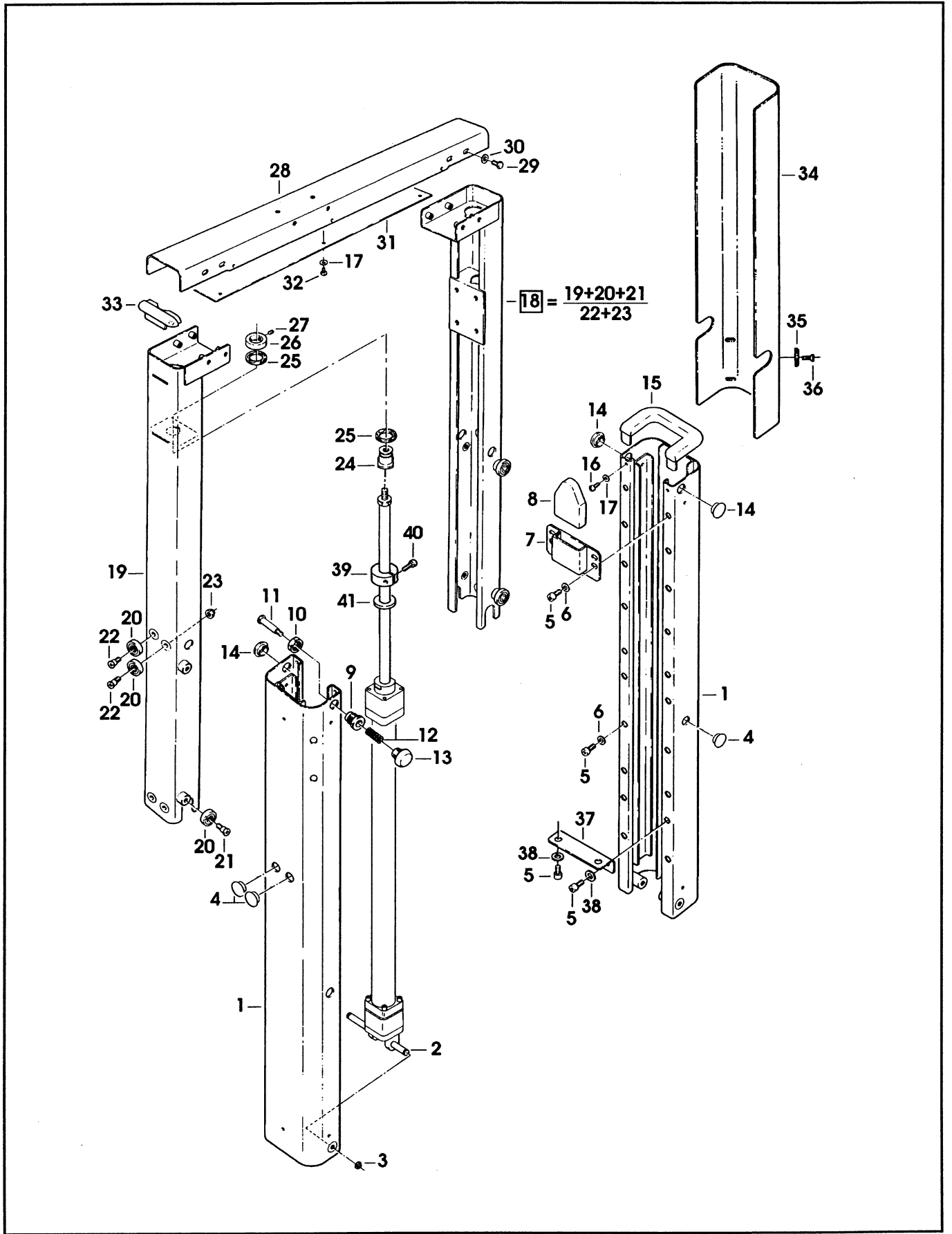


Figura	Descrizione figura	Magaz.	Codice	Descrizione
5917	COLONNE	0	78811408828	700r-I RANDOM CASE SEALER Type 39600

Posizione	Codice	Descrizione	U.M.	Quantita'
1	78807645391	COLUMN - OUTER	PZ	2
2	78807645409	PIN - AIR CYLINDER	PZ	2
3	78806080350	E-RING 7DIN6799	PZ	4
4	78805488216	END - CAP	PZ	8
5	26100379648	SCREW SOC.HD.HEX SOC.DR.,M8X20	PZ	20
6	78801793189	WASHER-PLAIN-METRIC 8MM	PZ	12
7	78807645417	PLATE - BUMPER SUPPORT	PZ	2
8	78807645425	BUMPER	PZ	2
9	78807645433	BUSHING - HEIGHT STOP	PZ	1
10	78801791696	NUT-M18X1	PZ	1
11	78807645441	STUD - HEIGHT STOP	PZ	1
12	78807645458	SPRING	PZ	1
13	78810009544	KNOB	PZ	1
14	78807645474	CAP /18	PZ	3
15	78806084915	CAP - COLUMN	PZ	2
16	78807645482	SCREW - SELF-TAPPING 8PX16	PZ	4
17	78800557403	WASHER PLAIN-METRIC 4MM NICK.	PZ	10
18	78807645490	COLUMN ASSY - INNER	PZ	2
19	78807645508	COLUMN - INNER	PZ	2
20	78805486178	BEARING SPECIAL	PZ	16
21	78801791068	SCREW-BEARING SHOULDER	PZ	8
22	78805485899	SCREW SPECIAL	PZ	8
23	26100369169	NUT LOCKING PLASTIC INSERT M6	PZ	8
24	78807645516	MOUNTING - ROD	PZ	2
25	78805488232	WASHER - BUMPER	PZ	4
26	78807645524	RING NUT - ROD	PZ	2
27	78805956170	SET SCREW M6X8	PZ	2
28	78807645532	CROSSMEMBER	PZ	1
29	78806078867	SCREW-HEX.HD.M6X16 SPECIAL	PZ	8
30	26100000103	WASHER - FLAT M6	PZ	8
31	78807015041	COVER	PZ	1
32	78801071578	SCREW-HEX.HD. M4X10	PZ	6
33	78807015058	CAP - INNER COLUMN	PZ	2
34	78810011524	GUARD - COLUMN	PZ	2
35	78807654773	WASHER - SPECIAL /6.5X20X4	PZ	8
36	26100198436	SCREW FLAT SOC.HD.M6X16	PZ	8
37	78806084907	PLATE - COLUMN MOUNTING	PZ	2
38	26100455075	WASHER M8	PZ	8
39	78810011532	COLLAR - HEIGHT LOCKING	PZ	2
40	78801072105	SCREW - SOC.HD.HEX.SOC.M6X20	PZ	2
41	78810011540	WASHER - /30-15-05	PZ	2

=====
Data 24/02/97



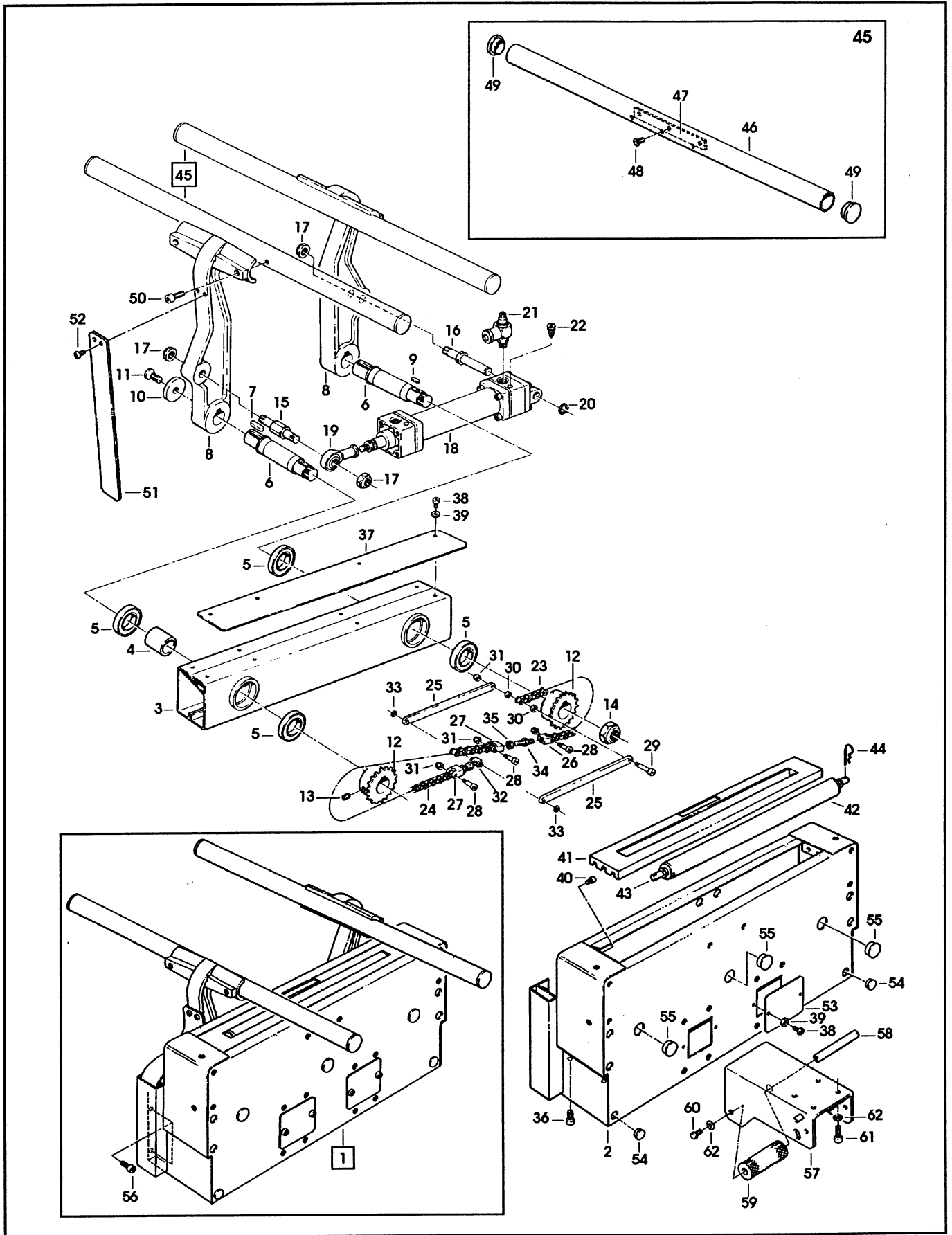
700r-I
 Type 39600

Feb. 1997

Fig. **5917**

Figura	Descrizione figura	Magaz.	Codice	Descrizione
5920	CENTRATORE	0	78811408828	700r-I RANDOM CASE SEALER Type 39600

Posizione	Codice	Descrizione	U.M.	Quantita'
1	78810011565	INFEED CONVEYOR ASSEMBLY	PZ	1
2	78810011573	FRAME - INFEED	PZ	1
3	78807645664	FRAME	PZ	1
4	78807645185	SPACER - BEARING	PZ	2
5	78802325510	BEARING-6005-2RS	PZ	4
6	78807645672	PIVOT - INFEED	PZ	2
7	78807645680	KEY 7X8X25	PZ	2
8	78810011581	LEVER - INFEED	PZ	2
9	78807645706	KEY 6X6X15	PZ	2
10	78805485881	WASHER - 8,5/40X6	PZ	2
11	78805485673	SCREW SOC.HD.SPECIAL	PZ	2
12	78807645714	SPROCKET - Z=20	PZ	2
13	78802324794	SCREW - SET W/END CUP, M6X10	PZ	2
14	78806084162	NUT - SPECIAL M20X1	PZ	2
15	78807645722	STUD - JOINT	PZ	1
16	78807645730	PIN - AIR CYLINDER	PZ	1
17	78809105550	NUT - SPECIAL, M12	PZ	3
18	78807645755	CYLINDER - AIR, /40X155	PZ	1
19	78805757479	MOUNT, CYLINDER ROD END	PZ	1
20	78805639651	RING - 8 DIN 6799	PZ	1
21	78809105105	REGULATOR - SPEED	PZ	2
22	78807646530	SCREW - CUSHIONING CYL./40	PZ	1
23	78807645763	CHAIN - 3/8" P=25	PZ	1
24	78807645771	CHAIN - 3/8" P=45	PZ	1
25	78805487879	CHAIN LINK	PZ	2
26	78805487887	CHAIN CONNECTOR	PZ	1
27	78805487861	CHAIN CONNECTOR	PZ	2
28	78806075202	SCREW M3X20	PZ	3
29	78806075194	SCREW M3X25	PZ	1
30	78805487838	WASHER - SPECIAL	PZ	2
31	78805955172	NUT-SELF-LOCKING M3 ZINC. PL.	PZ	4
32	78805487846	BLOCK - CHAIN	PZ	1
33	78805639453	E-RING - M4	PZ	2
34	78805487853	ROD - THREADED RIGHT/LEFT	PZ	2
35	78801074184	NUT - METRIC, HEX, STL., M6	PZ	2
36	26100379630	SCREW - SOC. HD. M8X16	PZ	8
37	78807645789	COVER - CHAIN	PZ	1
38	26100257539	SCREW-SELF TAPPING	PZ	8
39	78800557403	WASHER PLAIN-METRIC 4MM NICK.	PZ	8
40	26100379432	SCREW-SOC.HD.M4X12	PZ	4
41	78810011599	COVER	PZ	1
42	78810011607	ROLLER - /32X438, W/O SHAFT	PZ	1
43	78810011615	SHAFT - ROLLER	PZ	1
44	78807653858	SPRING	PZ	2
45	78807646480	GUIDE ASSY	PZ	2
46	78807646498	GUIDE - INFEED	PZ	2
47	78807646506	PLATE - GUIDE	PZ	2
48	26100258305	SCREW HEX HD.M6X12	PZ	2
49	78805487796	END - CAP	PZ	4
50	78801072105	SCREW - SOC.HD.HEX.SOC.M6X20	PZ	4
51	78810011623	STRAP - SAFETY	PZ	2
52	78809461458	SCREW - PHILLIS M5X12	PZ	4



700r-I
Type 39600

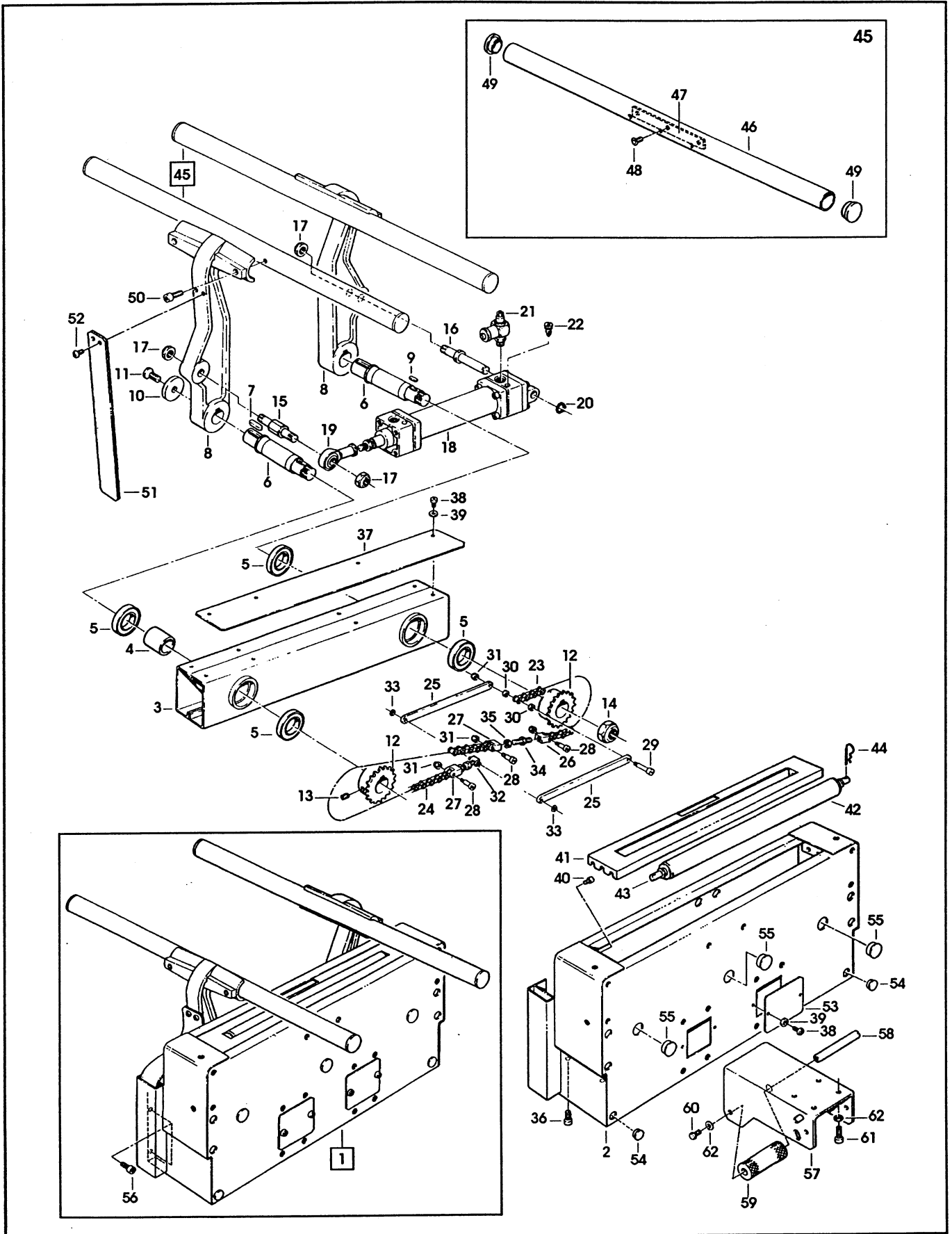
Feb. 1997

Fig. **5920**

Figura	Descrizione figura	Magaz.	Codice	Descrizione
5920	CENTRATORE	0	78811408828	700r-I RANDOM CASE SEALER Type 39600

Posizione	Codice	Descrizione	U.M.	Quantita'
53	78807646514	PLATE - INFEED	PZ	2
54	78805488216	END - CAP	PZ	2
55	78806078859	END CAP /25X1,2	PZ	3
56	26100379648	SCREW SOC.HD.HEX SOC.DR.,M8X20	PZ	6
57	78807646522	SUPPORT - BRACKET	PZ	1
58	78806084840	SHAFT - ROLLER	PZ	1
59	78806084857	ROLLER	PZ	1
60	78803203757	SCREW METRIC M6X16 HEX.HD.	PZ	1
61	26100379572	SCREW SOC. HD. HEX HD. M6X16	PZ	4
62	26100000103	WASHER - FLAT M6	PZ	5
999	78806084352	REPAIR KIT - CYLINDER /40	PZ	1

=====
 ===== Data 24/02/97



700r-I
Type 39600

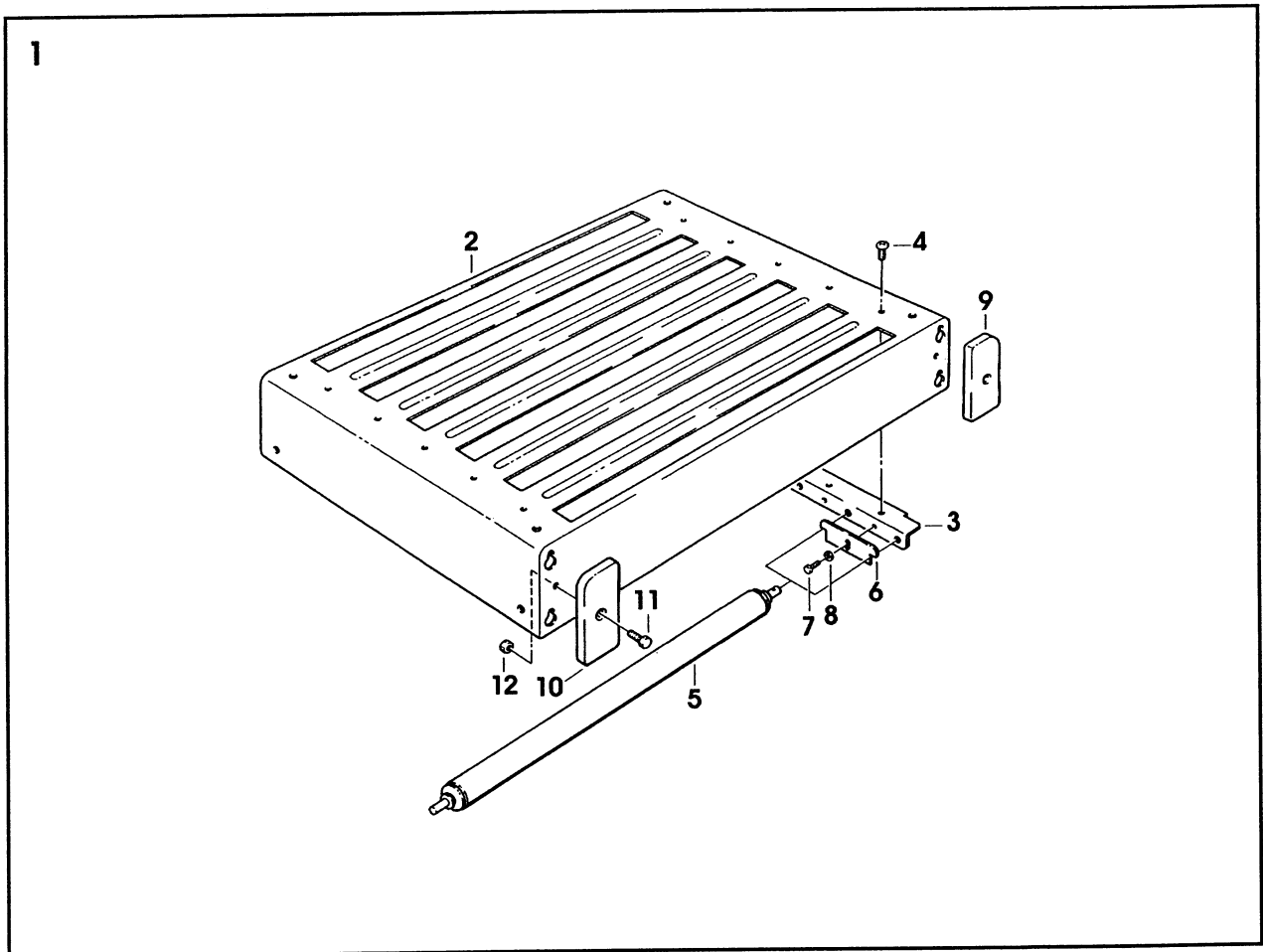
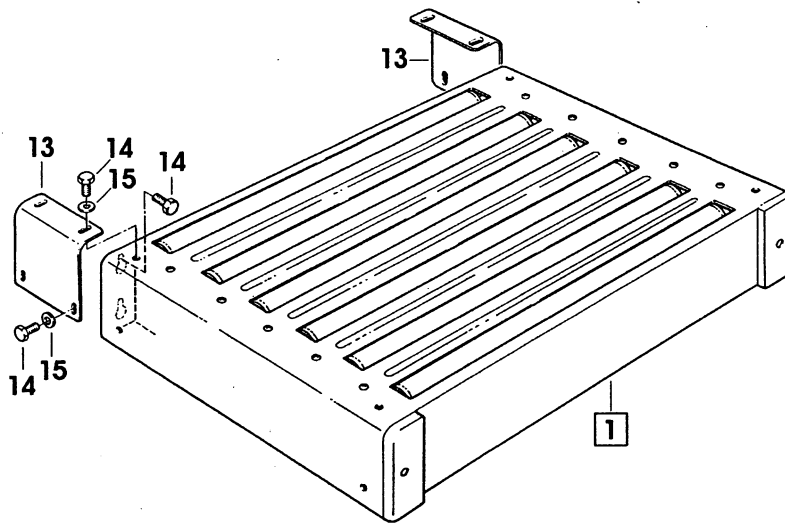
Feb. 1997

Fig. 5920

Figura	Descrizione figura	Magaz.	Codice	Descrizione
5921	PIANETTO A 6 RULLI	0	78811408828	700r-I RANDOM CASE SEALER Type 39600

Posizione	Codice	Descrizione	U.M.	Quantita'
1	78810011631	CONVEYOR ASSY - INFEED	PZ	1
2	78807645136	PLATE - REINFORCEMENT	PZ	1
3	78810011649	PLATE	PZ	2
4	78807646258	SCREW - SPECIAL M5X16	PZ	10
5	78807645797	ROLLER - /32X492	PZ	6
6	78810011664	PLATE - ROLLER	PZ	3
7	78801071578	SCREW-HEX.HD. M4X10	PZ	3
8	78800557403	WASHER PLAIN-METRIC 4MM NICK.	PZ	3
9	78807645110	CAP - FRONT, R/H	PZ	1
10	78807645128	CAP - FRONT, L/H	PZ	1
11	78803203757	SCREW METRIC M6X16 HEX.HD.	PZ	2
12	78801074184	NUT - METRIC, HEX, STL., M6	PZ	2
13	78807645144	BRACKET - INFEED CONVEYOR	PZ	2
14	26100358410	SCREW M8X16	PZ	12
15	78801793189	WASHER-PLAIN-METRIC 8MM	PZ	8

=====
 ===== Data 24/02/97



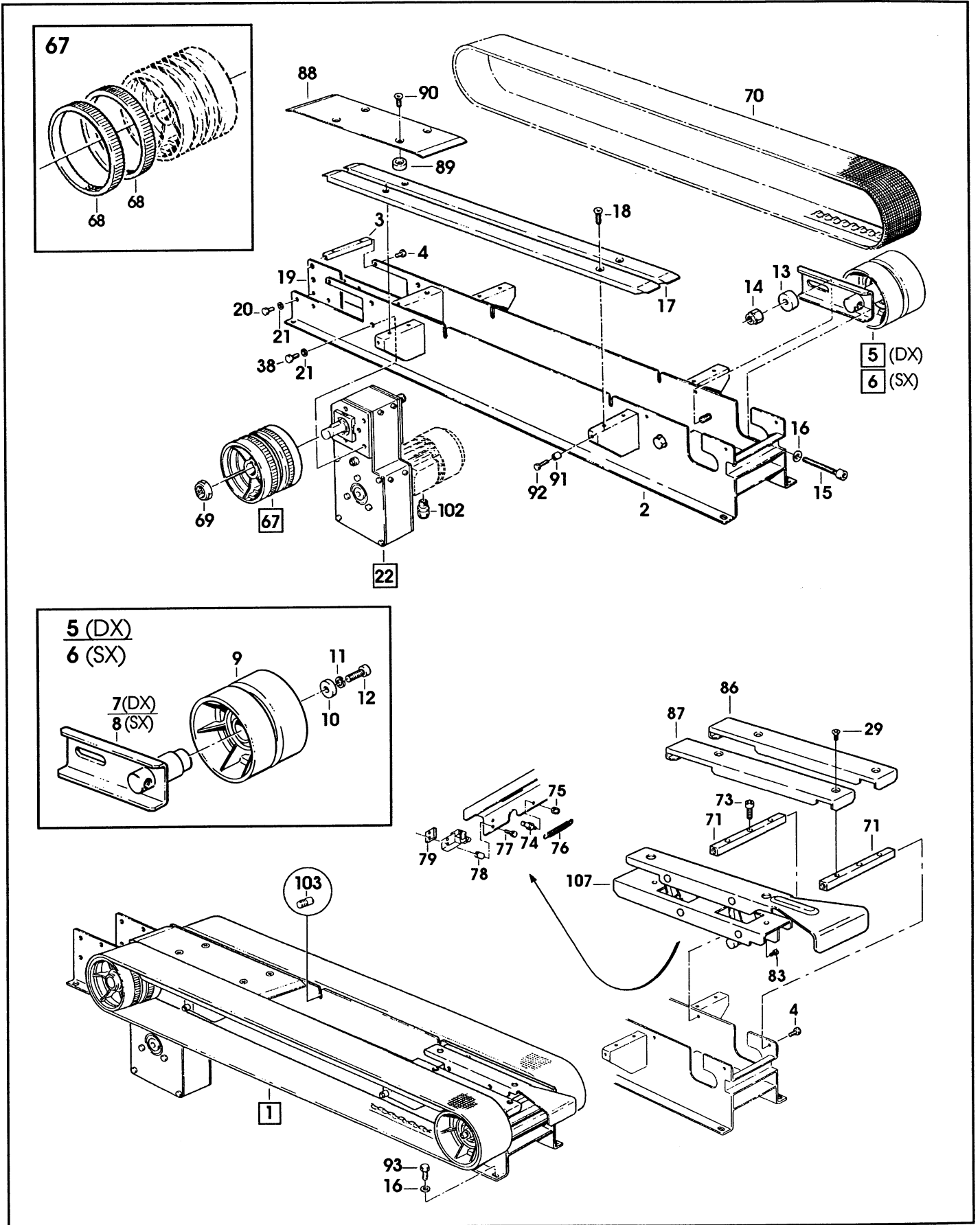
700r-I
Type 39600

Feb. 1997

Fig. **5921**

Figura	Descrizione figura	Magaz.	Codice	Descrizione
6244	MOTORIZZAZIONE INFERIORE	0	78811408828	700r-I RANDOM CASE SEALER Type 39600

Posizione	Codice	Descrizione	U.M.	Quantita'
1	78810012431	DRIVE ASSY - BTM, W/O MOTOR	PZ	1
2	78807646175	FRAME - BOTTOM DRIVE	PZ	1
3	78807015140	SPACER	PZ	1
4	26100358295	SCREW HEX.HD.M6X12	PZ	6
5	78810012365	BEL TENSIONING ASSY - R/H	PZ	1
6	78810012373	BELT TENSIONING ASSY - L/H	PZ	1
7	78810012381	BELT TENSIONING - R/H	PZ	1
8	78810012399	BELT TENSIONING - L/H	PZ	1
9	78805267107	ROLLER - IDLER	PZ	2
10	78805267099	WASHER - SPECIAL	PZ	2
11	78801074358	WASHER METRIC LOCK.M6	PZ	2
12	26100379572	SCREW SOC. HD. HEX HD. M6X16	PZ	2
13	78807015181	SPACER - SHAFT	PZ	2
14	26100369185	NUT, PLASTIC INSERT M10 HEX FLANGE	PZ	2
15	78807015199	SCREW - SOC.HD. HEX.HD. M8X70	PZ	2
16	78801793189	WASHER-PLAIN-METRIC 8MM	PZ	6
17	78807015207	GUIDE - DRIVE BELT	PZ	4
18	26100547574	SCREW - FLAT HD, SOC.DR. M5X20	PZ	8
19	78807646191	BRACKET - REAR, ROLLER	PZ	2
20	78801071693	SCREW-METRIC, M6X12, HEX HD.	PZ	4
21	26100000103	WASHER - FLAT M6	PZ	8
22	78807645276	GEAR BOX ASS.Y W/O MOTOR	PZ	1
25	78805489750	SPACER	PZ	2
26	78805489776	SPACER	PZ	3
27	26100358204	SCREW - HEX HD.M-5X12	PZ	8
28	78800557411	WASHER - FLAT, M5	PZ	8
29	26000158621	SCREW, FLAT HD SOC.M5X12	PZ	7
30	78806081465	GEAR BOX PULLEY ASS.Y	PZ	1
31	78805489800	PULLEY TIMING BELT	PZ	1
32	78805489792	HOUSING-BEARING	PZ	1
33	78802882445	KEY - 4 X 4 X 10MM	PZ	1
34	78805489818	SPROCKET - 3/8 PITCH, 11 TEETH	PZ	1
35	78805488778	WASHER, 5,5/20X4	PZ	1
36	78805485774	WASHER - SPECIAL	PZ	1
37	26100198436	SCREW FLAT SOC.HD.M6X16	PZ	1
38	78801071933	SCREW-METRIC, M6X20, HEX.HD.	PZ	7
39	78804229199	WASHER - TRIPLE, M6	PZ	3
40	78807645300	PULLEY ASS.Y	PZ	1
41	78805489784	REDUCER-PULLEY	PZ	1
42	78807645318	SHAFT - TIMING PULLEY	PZ	1
43	78801658556	E - RING 10MM	PZ	1
44	78807645805	NUT - SELF LOCKING M8	PZ	2
45	78805758089	TIMING BELT 187L100	PZ	1
46	78805757248	TIMING BELT 187L050 BORAN	PZ	1
47	78805489826	PULLEY-TIMING 11 TEETH	PZ	1
48	26100388169	SCREW, SET M5X6	PZ	1
49	78801793015	SCREW-HEX HEAD M8X25	PZ	4
50	26100455075	WASHER M8	PZ	4
51	78800557361	LOCKWASHER-FOR M8 SCREW	PZ	4
52	26100369045	NUT - HEX, M8	PZ	4
53	78807645821	DRIVE SHAFT ASS.Y	PZ	1



700r-I
Type 39600

Ott. 2003

Fig. **6244/1**

Figura	Descrizione figura	Magaz.	Codice	Descrizione
6244	MOTORIZZAZIONE INFERIORE	0	78811408828	700r-I RANDOM CASE SEALER Type 39600

Posizione	Codice	Descrizione	U.M.	Quantita'
54	78805489867	SPROCKET-3/8" PITCH,28 TEETH	PZ	1
55	78805758113	KEY,6X6X20 MM.	PZ	1
56	78805757396	KEY, M5X5X30 MM	PZ	2
57	78805489842	BUSHING	PZ	1
58	78805489834	HOUSING-BEARING	PZ	2
59	78807645813	SHAFT - GEAR BOX	PZ	1
60	78805489875	CHAIN-3/8" PITCH,57 PITCH LONG	PZ	1
61	78807645839	COVER - TOP	PZ	1
63	26100379499	SCREW SOC. HD. HEX SOC. M5X12	PZ	6
64	78807645854	SUPPORT - RIGHT, BEARING	PZ	1
65	78807645862	SUPPORT - LEFT, BEARING	PZ	1
66	78803203823	SCREW-SOC.HEX HD.M5X16 ZINC.PL	PZ	8
67	78807651050	PULLEY ASS.Y - DRIVE	PZ	2
68	78805267131	RING - POLYURETHANE	PZ	4
69	78806084162	NUT - SPECIAL M20X1	PZ	2
70	78807015314	BELT - DRIVE, WITH HOOK	PZ	2
71	78807645557	SPACER	PZ	2
73	26100379515	SCREW,SOC HD HEX SOC M5X20	PZ	2
74	78805487572	PIN - SPRING HOLDER	PZ	1
75	26100568596	NUT SELF LOCKING M-5	PZ	1
76	78807647744	SPRING	PZ	1
77	26100379473	SCREW SOC.HD.HEX SOX.M4X35	PZ	2
78	78805487580	SPACER - VALVE HOLDER	PZ	2
79	78805956071	PLATE - THREADED	PZ	1
83	26100249551	SCREW-SELF TAP 8PX13	PZ	1
86	78807645607	COVER - RIGHT	PZ	1
87	78807645615	COVER - LEFT	PZ	1
88	78807646183	COVER - REAR	PZ	1
89	78805487515	SPACER	PZ	4
90	26100553168	SCREW, FLAT HD.HEX DR.M5X16	PZ	4
91	78807015348	STUD - SIDE PLATE	PZ	4
92	78806084881	SCREW - HEX.HD. M5X20	PZ	4
93	26100358410	SCREW M8X16	PZ	4
94	78810008652	MOTOR - 200/220V, 50/60HZ 3-PHASE, 0.12 KW	PZ	1
95	78805267180	MOTOR- 220/415V, 50HZ, 3-PHASE	PZ	1
96	78805267198	MOTOR - 260/440V - 50HZ 3PHASE	PZ	1
97	78804682678	MOTOR- 110/110V, 50/60HZ 1-PHASE, 0.12 KW	PZ	1
98	78809106541	MOTOR - 125V 60HZ 1-PHASE	PZ	1
99	78804682686	MOTOR 1-PH, 220/240V. 50HZ MH63 C4 KW 0.12 B5	PZ	1
100	78807645904	MOTOR 220/240V 60HZ 1-PHASE	PZ	1
101	78807653726	FAN - MOTOR	PZ	1
102	78807645326	CORD GRIP	PZ	1
103	78807645003	STUD - MOUNTING	PZ	4
104	78809107895	FRAME - R/H	PZ	1
105	78809107903	FRAME - L/H	PZ	1
106	78809105980	COVER - GEARBOX	PZ	1
107	78812962179	LINK - ACTUATOR, VALVE	PZ	1

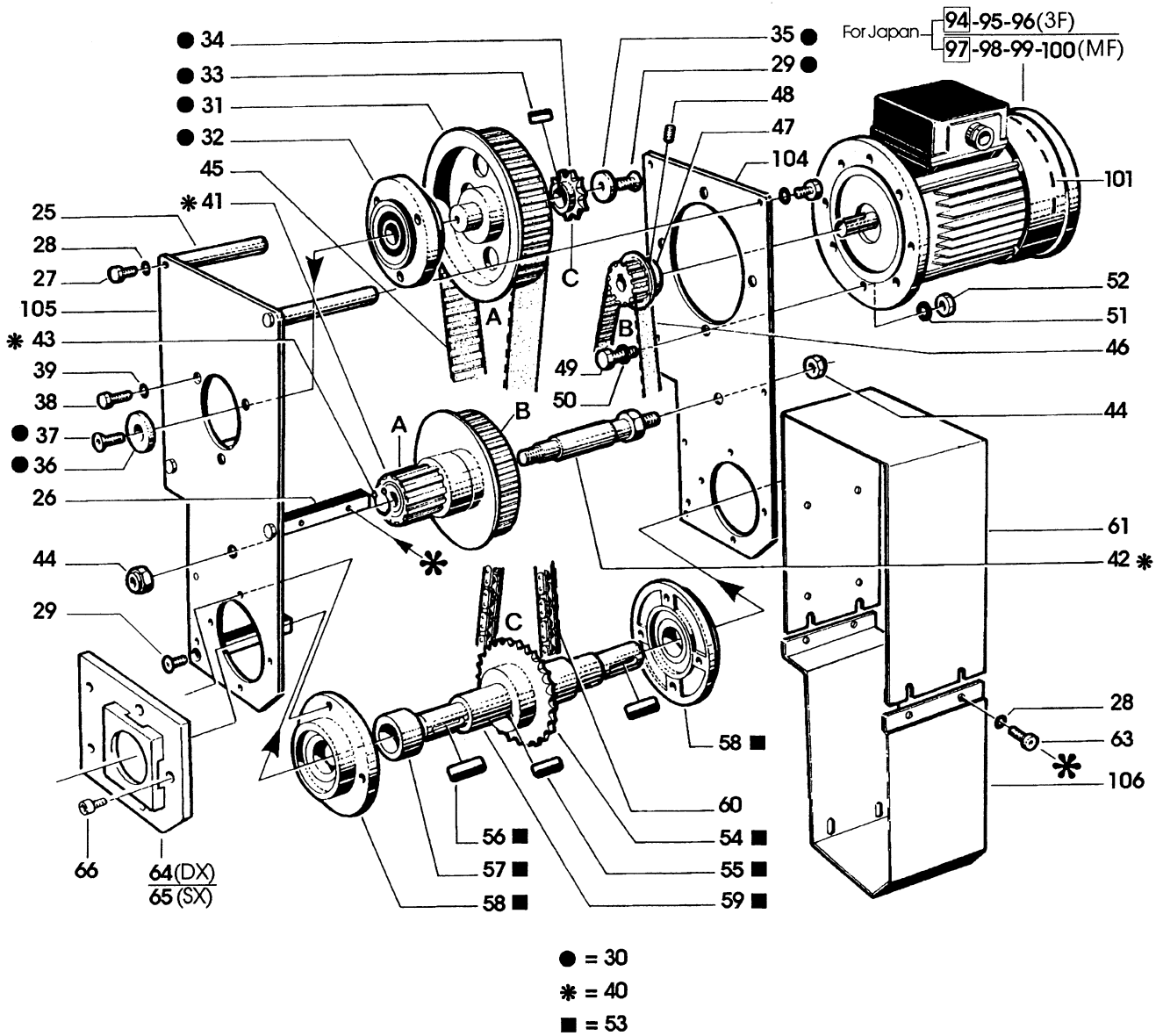
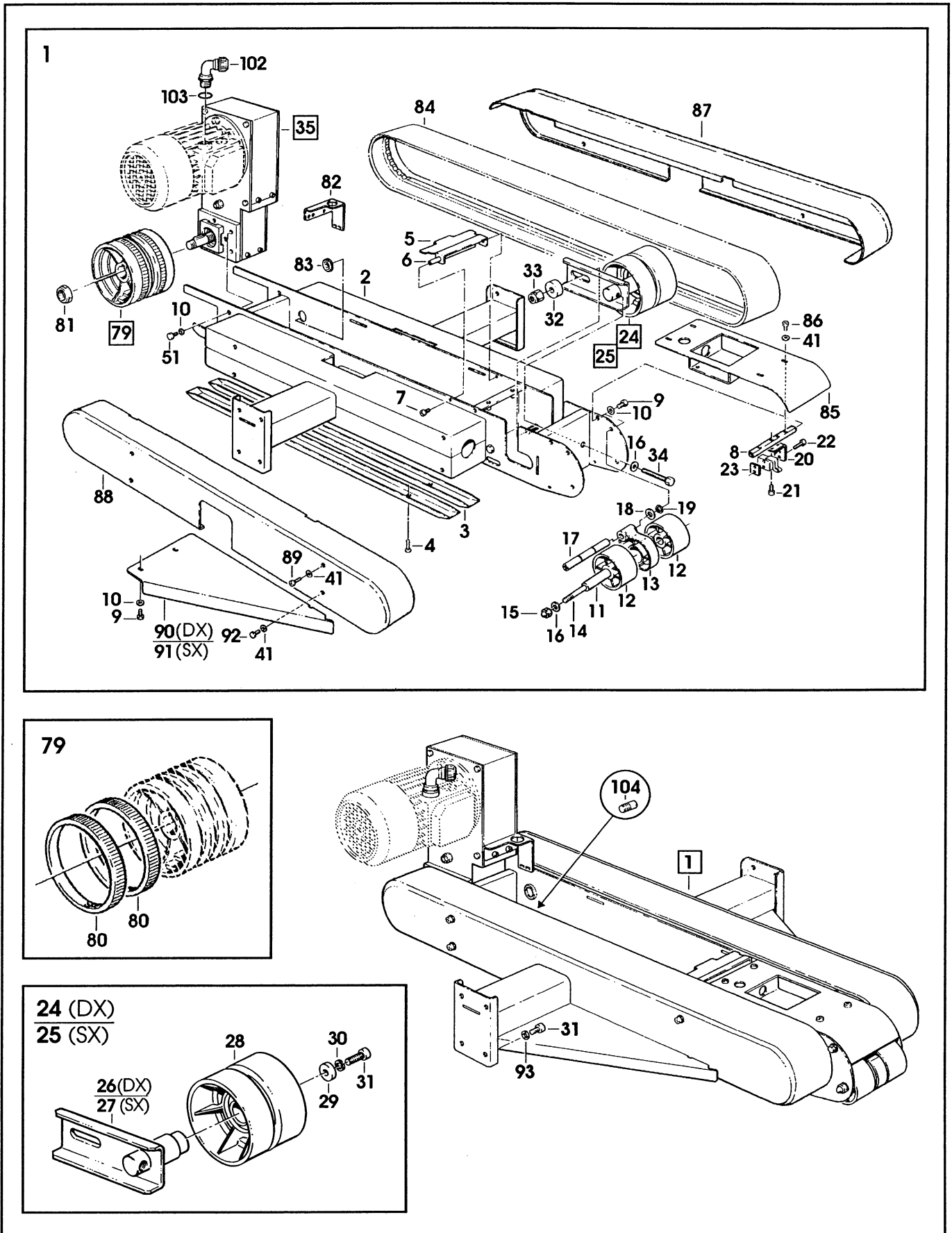


Figura	Descrizione figura	Magaz.	Codice	Descrizione
6245	MOTORIZZAZIONE SUPERIORE	0	78811408828	700r-I RANDOM CASE SEALER Type 39600

Posizione	Codice	Descrizione	U.M.	Quantita'
1	78810012449	DRIVE ASSY - TOP, W/O MOTOR	PZ	1
2	78809106707	FRAME - UPPER DRIVE	PZ	1
3	78807015207	GUIDE - DRIVE BELT	PZ	4
4	26100547574	SCREW - FLAT HD, SOC.DR. M5X20	PZ	8
5	78807015892	CLAMP - UPPER HEAD	PZ	1
6	78807015900	SHAFT - ROLLER	PZ	1
7	26100379481	SCREW,SOC.HD HEX SOC.M5X10	PZ	2
8	78807646555	SPACER - VALVE	PZ	1
9	78801071693	SCREW-METRIC, M6X12, HEX HD.	PZ	8
10	26100000103	WASHER - FLAT M6	PZ	12
11	78810011300	TUBE - ROLLER	PZ	1
12	78807646563	ROLLER	PZ	2
13	78807646571	LINK - ACTUATOR, VALVE	PZ	1
14	78810011318	SHAFT - ROLLER	PZ	1
15	78810011326	NUT - SPECIAL, M8	PZ	2
16	78801793189	WASHER-PLAIN-METRIC 8MM	PZ	4
17	78807646589	SHAFT	PZ	1
18	78805265663	WASHER - FRICTION	PZ	2
19	78801658556	E - RING 10MM	PZ	3
20	78807646597	PLATE - VALVE	PZ	1
21	78801071636	SCREW-METRIC, M5X10, HEX.HD.	PZ	2
22	26100379465	SCREW - SOC.HD. M4X25	PZ	2
23	78805956071	PLATE - THREADED	PZ	1
24	78810012365	BEL TENSIONING ASSY - R/H	PZ	1
25	78810012373	BELT TENSIONING ASSY - L/H	PZ	1
26	78810012381	BELT TENSIONING - R/H	PZ	1
27	78810012399	BELT TENSIONING - L/H	PZ	1
28	78805267107	ROLLER - IDLER	PZ	2
29	78805267099	WASHER - SPECIAL	PZ	2
30	78801074358	WASHER METRIC LOCK.M6	PZ	2
31	26100379572	SCREW SOC. HD. HEX HD. M6X16	PZ	10
32	78807015181	SPACER - SHAFT	PZ	2
33	26100369185	NUT, PLASTIC INSERT M10 HEX FLANGE	PZ	2
34	78807015942	SCREW - HEX.HD. M8X60	PZ	2
35	78807645276	GEAR BOX ASS.Y W/O MOTOR	PZ	1
38	78805489750	SPACER	PZ	2
39	78805489776	SPACER	PZ	3
40	26100358204	SCREW - HEX HD.M-5X12	PZ	8
41	78800557411	WASHER - FLAT, M5	PZ	20
42	26000158621	SCREW, FLAT HD SOC.M5X12	PZ	3
43	78806081465	GEAR BOX PULLEY ASS.Y	PZ	1
44	78805489800	PULLEY TIMING BELT	PZ	1
45	78805489792	HOUSING-BEARING	PZ	1
46	78802882445	KEY - 4 X 4 X 10MM	PZ	1
47	78805489818	SPROCKET - 3/8 PITCH, 11 TEETH	PZ	1
48	78805488778	WASHER, 5,5/20X4	PZ	1
49	78805485774	WASHER - SPECIAL	PZ	1
50	26100198436	SCREW FLAT SOC.HD.M6X16	PZ	1
51	78801071933	SCREW-METRIC, M6X20, HEX.HD.	PZ	7
52	78804229199	WASHER - TRIPLE, M6	PZ	3
53	78807645300	PULLEY ASS.Y	PZ	1



700r-I
Type 39600

Feb. 1998

Fig. **6245/1**

Figura	Descrizione figura	Magaz.	Codice	Descrizione
6245	MOTORIZZAZIONE SUPERIORE	0	78811408828	700r-I RANDOM CASE SEALER Type 39600

Posizione	Codice	Descrizione	U.M.	Quantita'
54	78805489784	REDUCER-PULLEY	PZ	1
55	78807645318	SHAFT - TIMING PULLEY	PZ	1
56	78807645805	NUT - SELF LOCKING M8	PZ	2
57	78805758089	TIMING BELT 187L100	PZ	1
58	78805757248	TIMING BELT 187L050 BORAN	PZ	1
59	78805489826	PULLEY-TIMING 11 TEETH	PZ	1
60	26100388169	SCREW, SET M5X6	PZ	1
61	78801793015	SCREW-HEX HEAD M8X25	PZ	4
62	26100455075	WASHER M8	PZ	4
63	78800557361	LOCKWASHER-FOR M8 SCREW	PZ	4
64	26100013478	NUT METRIC HEX STL.,M8	PZ	4
65	78807645821	DRIVE SHAFT ASS.Y	PZ	1
66	78805489867	SPROCKET-3/8" PITCH,28 TEETH	PZ	1
67	78805758113	KEY,6X6X20 MM.	PZ	1
68	78805757396	KEY, M5X5X30 MM	PZ	2
69	78805489842	BUSHING	PZ	1
70	78805489834	HOUSING-BEARING	PZ	2
71	78807645813	SHAFT - GEAR BOX	PZ	1
72	78805489875	CHAIN-3/8" PITCH,57 PITCH LONG	PZ	1
73	78809107135	COVER - UPPER	PZ	1
75	26100379499	SCREW SOC. HD. HEX SOC. M5X12	PZ	8
76	78807645854	SUPPORT - RIGHT, BEARING	PZ	1
77	78807645862	SUPPORT - LEFT, BEARING	PZ	1
78	78803203823	SCREW-SOC.HEX HD.M5X16 ZINC.PL	PZ	8
79	78807651050	PULLEY ASS.Y - DRIVE	PZ	2
80	78805267131	RING - POLYURETHANE	PZ	4
81	78806084162	NUT - SPECIAL M20X1	PZ	2
82	78807646837	BRACKET	PZ	1
83	78807647025	GROMMET /28	PZ	1
84	78807015314	BELT - DRIVE, WITH HOOK	PZ	2
85	78809106756	COVER - UPPER, FRONT	PZ	1
86	78806080871	SCREW, METRIC M5X10	PZ	4
87	78810011482	GUARD - BELT, R/H	PZ	1
88	78810011490	GUARD - BELT, L/H	PZ	1
89	78807646258	SCREW - SPECIAL M5X16	PZ	6
90	78809106764	COVER - UPPER, R/H	PZ	1
91	78809106772	COVER - UPPER, L/H	PZ	1
92	26100258206	SCREW-HEX HD M5X16	PZ	2
93	78810010427	WASHER - /15X6.35X2	PZ	8
94	78810008652	MOTOR - 200/220V, 50/60HZ 3-PHASE, 0.12 KW	PZ	1
95	78805267180	MOTOR- 220/380V, 50HZ, 3-PHASE	PZ	1
96	78805267198	MOTOR - 260/440V - 50HZ 3PHASE	PZ	1
97	78804682678	MOTOR- 110/110V, 50/60HZ 1-PHASE, 0.12 KW	PZ	1
98	78809106541	MOTOR - 125V 60HZ 1-PHASE	PZ	1
99	78804682686	MOTOR 1-PH, 220/240V. 50HZ MH63 C4 KW 0.12 B5	PZ	1
100	78807645904	MOTOR 220V 60HZ 1-PHASE	PZ	1
101	78807653726	FAN - MOTOR	PZ	1
102	78807651134	UNION - PG11, /12	PZ	1

Figura	Descrizione figura	Magaz.	Codice	Descrizione
6245	MOTORIZZAZIONE SUPERIORE	0	78811408828	700r-I RANDOM CASE SEALER Type 39600

Posizione	Codice	Descrizione	U.M.	Quantita'
103	78811446018	GASKET - OR4067	PZ	1
104	78807645003	STUD - MOUNTING	PZ	4
105	78809107895	FRAME - R/H	PZ	1
106	78809107903	FRAME - L/H	PZ	1
107	78809105980	COVER - GEARBOX	PZ	1

Data 16/02/98

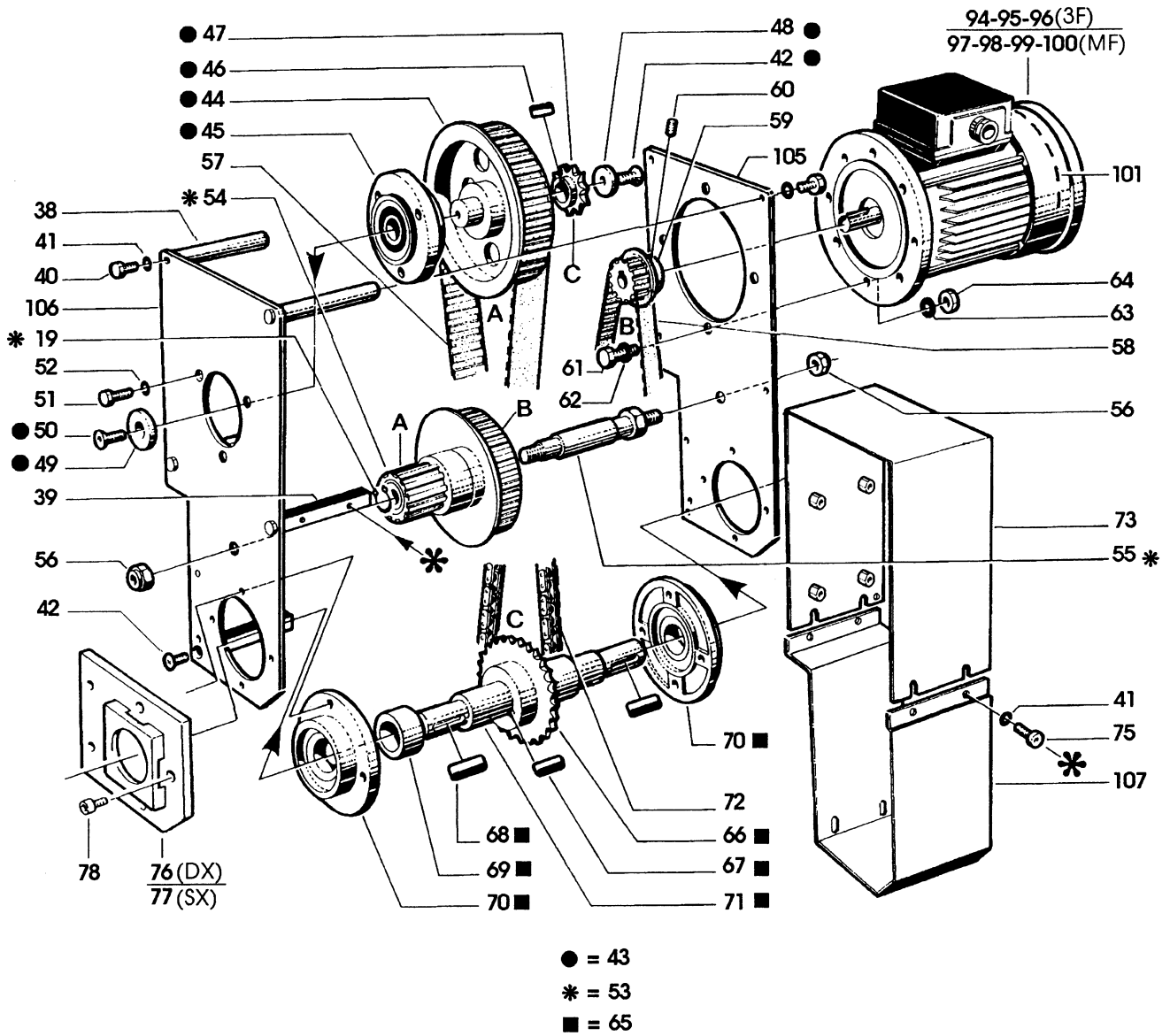
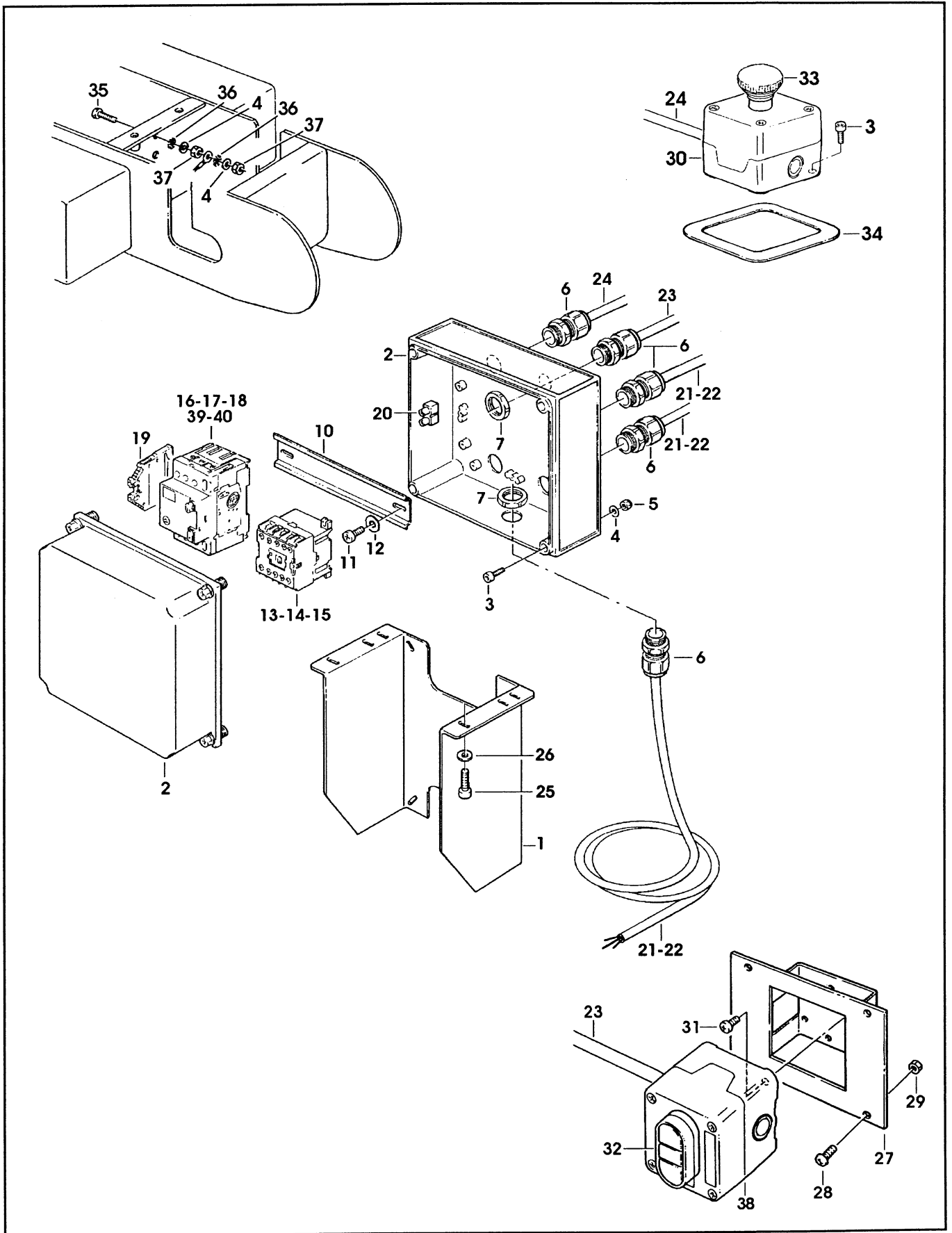


Figura	Descrizione figura	Magaz.	Codice	Descrizione
6246	IMPIANTO ELETTRICO	0	78811408828	700r-I RANDOM CASE SEALER Type 39600

Posizione	Codice	Descrizione	U.M.	Quantita'
1	78809463793	SUPPORT - BOX	PZ	1
2	78809463801	BOX	PZ	1
3	78809463819	SCREW - SOC.HD, HEX.HD. M4X15	PZ	6
4	78800557403	WASHER PLAIN-METRIC 4MM NICK.	PZ	6
5	26100369144	NUT, PLASTIC INSERT M4	PZ	4
6	78807647157	CORD GRIP	PZ	5
7	78807652116	SET NUT GMP13.5	PZ	5
10	78809463827	GUIDE - MOUNTING	PZ	1
11	78802882080	SCREW - 6PX9,5	PZ	2
12	78801790185	WASHER-METRIC, PLAIN, M4 SPEC.	PZ	2
13	78810008306	CONTACTOR - CA4-5-10 220V 50HZ	PZ	1
14	78810008314	CONTACTOR - CA4-5-10 380V 50HZ	PZ	1
15	78809463835	CONTACTOR - SPRECHER+ SCHUH CA4-5-10 110V 60HZ	PZ	1
16	78810007555	SWITCH - KTA 3-25, 2.5-4 A	PZ	1
17	78807653783	SWITCH - THERMAL, SPRECHER + SCHUH KTA 3-25 1.6-2.5A	PZ	1
18	78811446000	SWITCH - THERMAL, KTA3-25 6.3-10A	PZ	1
19	78809463843	CLAMP	PZ	1
20	78807649682	TERMINAL	PZ	0,08
21	78806080525	CABLE 4X1,5 5MT 3PH	PZ	2
22	78809104330	CABLE - 3X1.5 1-PHASE, 5 MT.	PZ	2
23	78807651761	CABLE FROR 07 3X0.75, 5 M.	PZ	1
24	78807652736	CABLE - 3X1, 5M	PZ	1
25	26100379572	SCREW SOC. HD. HEX HD. M6X16	PZ	4
26	26100000103	WASHER - FLAT M6	PZ	4
27	78810010393	SUPPORT - ON/OFF SWITCH	PZ	1
28	78801790664	SCREW - METRIC, M5X12	PZ	4
29	78801074176	NUT - METRIC, HEX STL. M5	PZ	4
30	78807651944	BOX - E-STOP, YELLOW ALLEN BRADLEY	PZ	1
31	78801792579	SCREW-PHILLIS HEAD, M4X10	PZ	2
32	78809463868	SWITCH - ON/OFF, DM3N-C-01/10 ALLEN BRADLEY	PZ	1
33	26101458458	E-STOP - /40, W/ LATCH+CONTACT BLOCK, 800EM-MTS44-3LX01	PZ	1
34	78810012340	COLLAR	PZ	1
35	78809105386	SCREW - HEX.HD. M4X20	PZ	1
36	78807647165	STAR WASHER - M4	PZ	2
37	78801074168	NUT-METRIC, HEX, STEEL M4	PZ	2
38	78811448964	BOX - ON/OFF, GREY ALLEN BRADLEY	PZ	1
39	78807652231	SWITCH - THERMAL, KTA 3-25 1-1.6A	PZ	1
40	78811989652	SWITCH - KTA 3-25, 4-6.3 A.	PZ	1

Data 15/09/2000



700r-I
 Type 39600

Set. 2000

Fig. **6246**



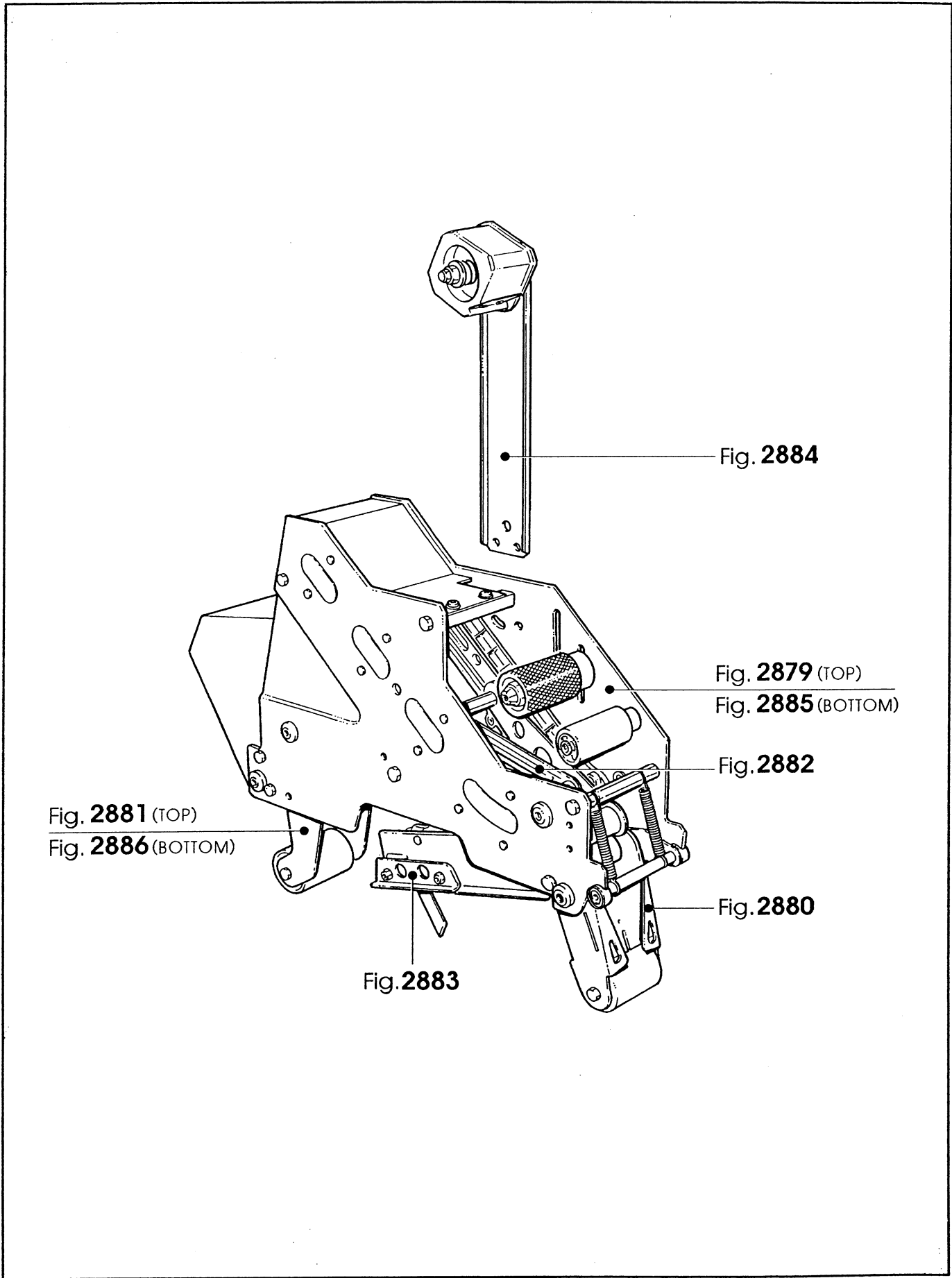
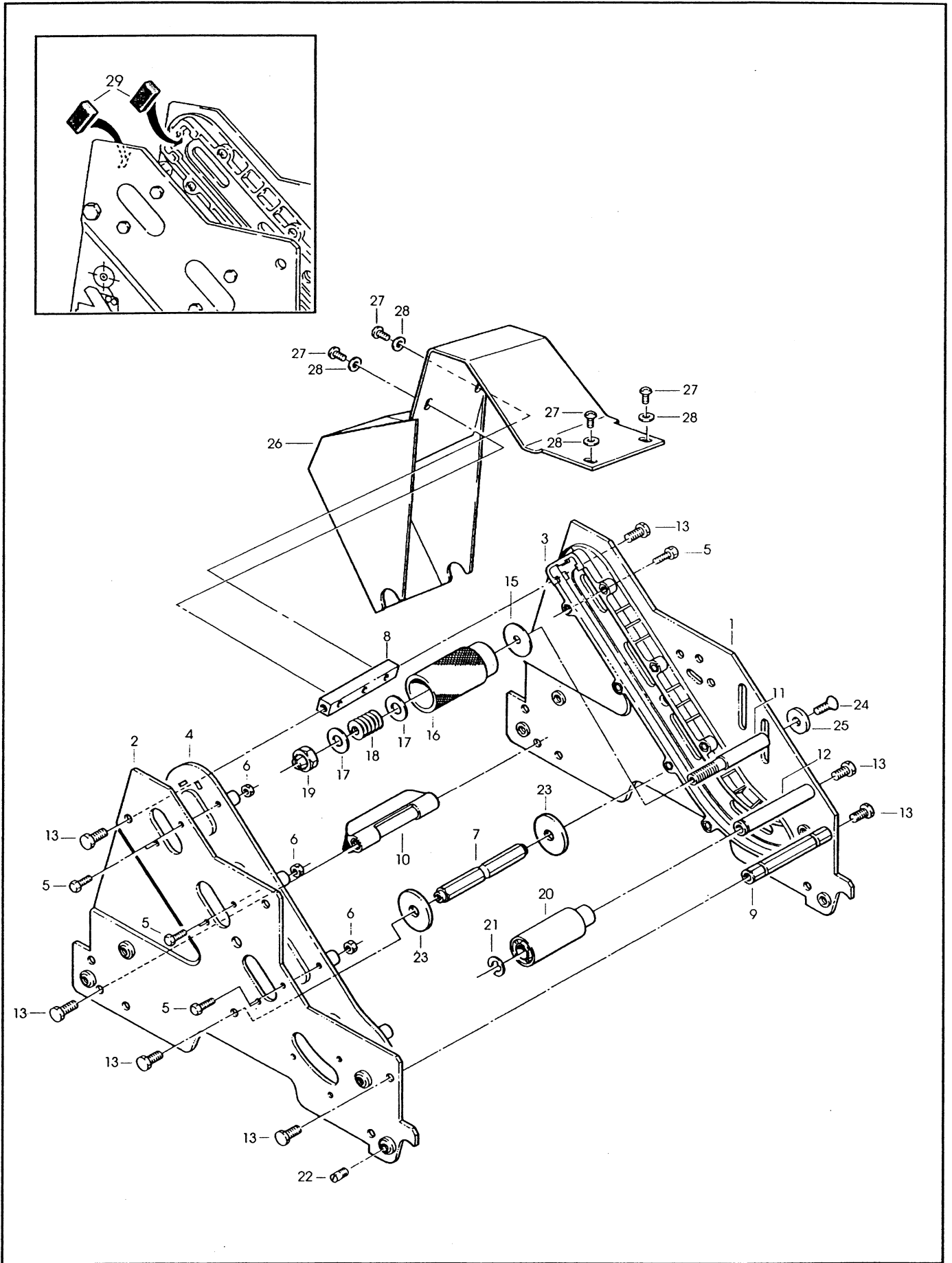


Figura	Descrizione figura	Magaz.	Codice	Descrizione
2879	GRUPPO SPALLE	0	78811408281	ACCUGLIDE II - 2", UPPER TYPE 39600

Posizione	Codice	Descrizione	U.M.	Quantita`
1	78807013863	FRAME - TAPE MOUNT UPPER ASS.Y	PZ	1
2	78807013871	FRAME - FRONT UPPER ASS.Y	PZ	1
3	78806841439	GUIDE - #1	PZ	1
4	78806841447	GUIDE - #2	PZ	1
5	83000273363	SCREW - HEX HD M4X14 ZINC.PL	PZ	18
6	78801074168	NUT-METRIC, HEX, STEEL M4	PZ	18
7	78807012519	SPACER - SPRING	PZ	1
8	78805487648	SPACER - 10X10X90MM	PZ	1
9	78805265606	SPACER - FRONT	PZ	1
10	78806079360	BRUSH ASSY	PZ	1
11	78805265648	SHAFT - TENSION ROLLER	PZ	1
12	78805265689	SHAFT - WRAP ROLLER	PZ	1
13	26100358295	SCREW HEX.HD.M6X12	PZ	9
15	78810010096	WASHER - SPECIAL	PZ	1
16	78805265655	ROLLER - TOP TENSION	PZ	1
17	26100455109	WASHER - PLAIN, M10	PZ	2
18	78805265671	SPRING - COMPRESSION	PZ	1
19	78801790771	NUT - SELF-LOCKING M10X1	PZ	1
20	78805265697	ROLLER - WRAP	PZ	1
21	26100016133	RING - RETAINING 10DIN6799	PZ	1
22	78807645003	STUD - MOUNTING	PZ	4
23	78807652421	STOP - CUTOFF FRAME	PZ	2
24	78806081796	SCREW-FLAT HD HEX M6X20	PZ	1
25	78807654773	WASHER - SPECIAL /6.5X20X4	PZ	1
26	78810010476	GUARD-HEAD	PZ	1
27	78801790664	SCREW - METRIC, M5X12	PZ	4
28	78800557411	WASHER - FLAT, M5	PZ	4
29	78807647348	BUMPER	PZ	2

==== Data 27/05/2003 ====



K13-3M (TOP)

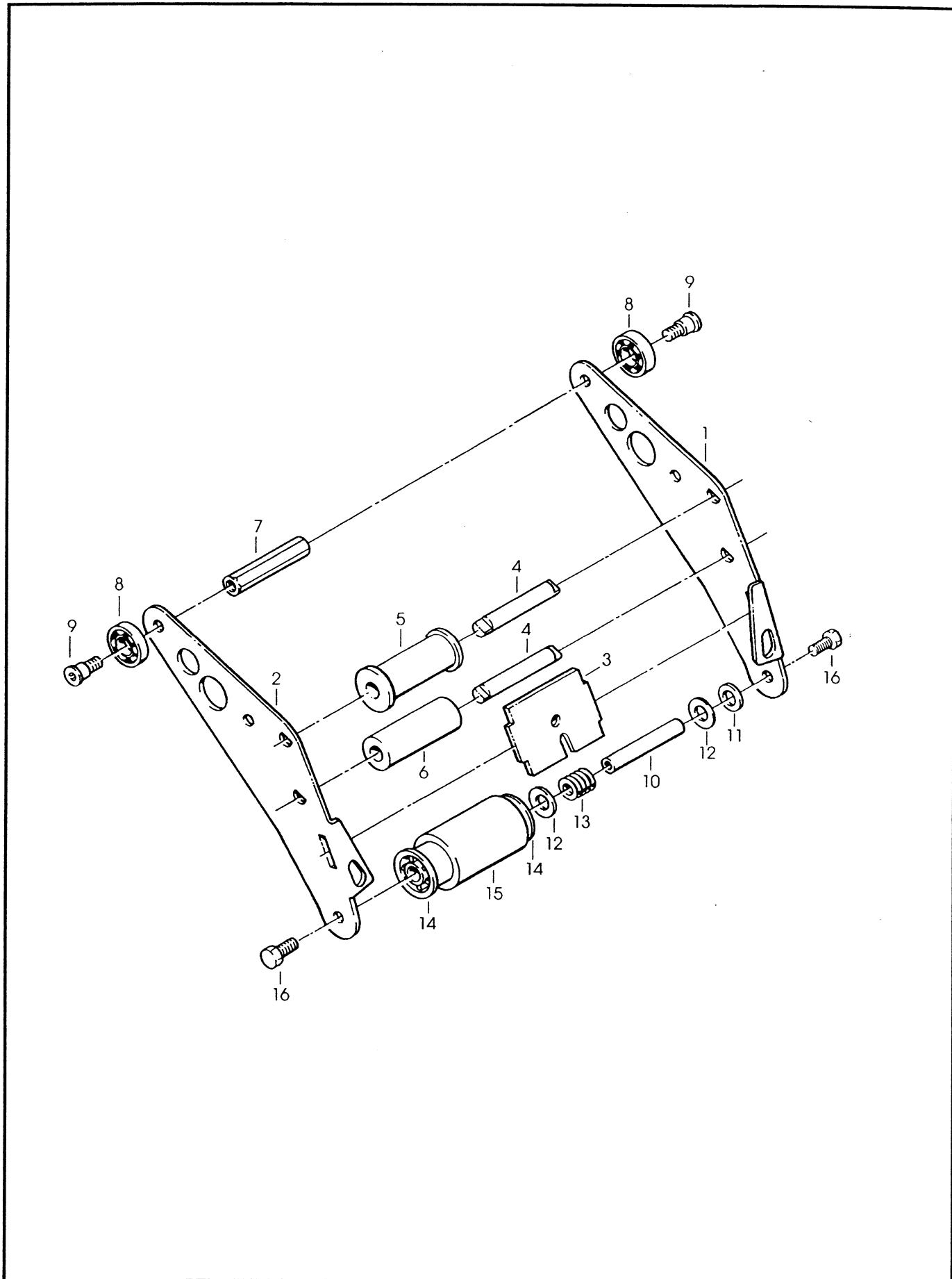
Ott. 96

Fig. 2879

Figura	Descrizione figura	Magaz.	Codice	Descrizione
2880	GRUPPO ENTRATA	0	78811408281	ACCUGLIDE II - 2", UPPER TYPE 39600

Posizione	Codice	Descrizione	U.M.	Quantita'
1	78807012063	ARM - APPLYING, R/H	PZ	1
2	78807012071	ARM - APPLYING, L/H	PZ	1
3	78807012212	PLATE - TAPE	PZ	1
4	78807013095	SHAFT - ROLLER	PZ	2
5	78807013673	ROLLER - KNURLED ASS'Y	PZ	1
6	78807012667	ROLLER - WRAP	PZ	1
7	78805265804	SPACER - REAR	PZ	1
8	78801790821	BEARING-SPECIAL 30MM	PZ	2
9	78801791068	SCREW-BEARING SHOULDER	PZ	2
10	78805265754	SHAFT - 10x60 W/HEXAGON	PZ	1
11	78801790748	WASHER-NYLON 15MM	PZ	1
12	78805265663	WASHER - FRICTION	PZ	2
13	78805265671	SPRING - COMPRESSION	PZ	1
14	78806083958	BUSHING-APPLYING ROLLER	PZ	1
15	78805761794	ROLLER - APPLYING	PZ	1
16	26100358295	SCREW HEX.HD.M6X12	PZ	2

Data 29/01/98



K13-3M

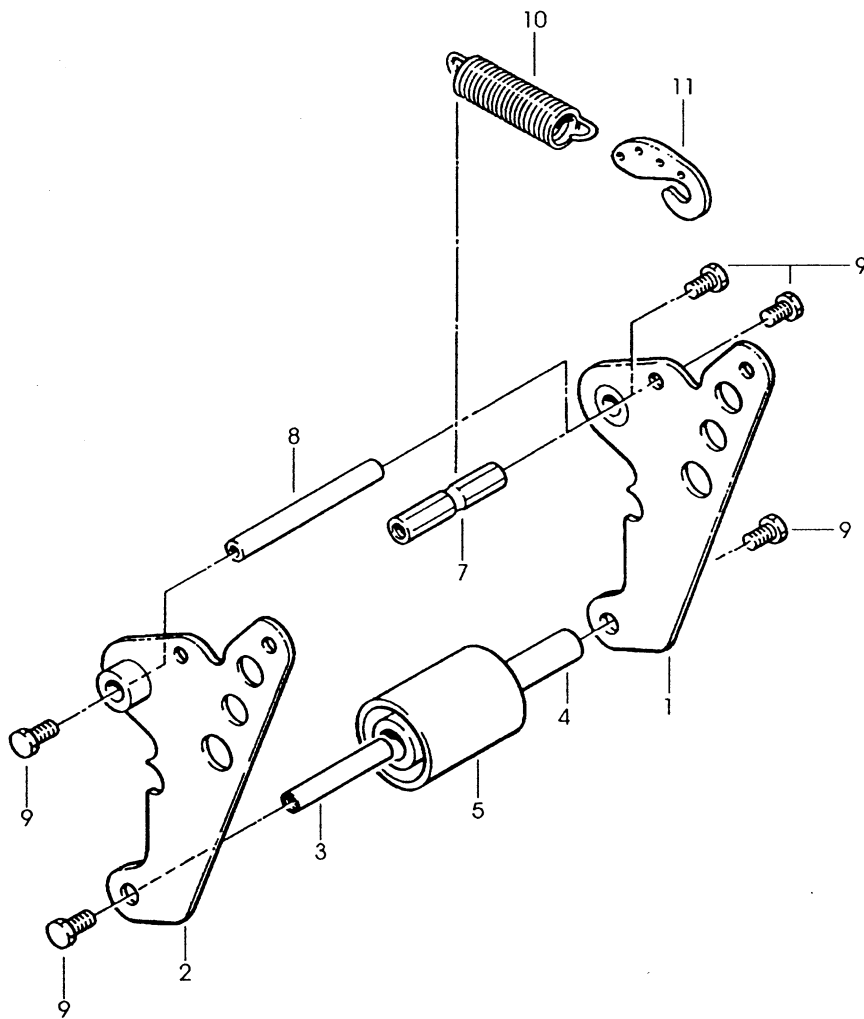
Giu. 96

Fig.2880

Figura	Descrizione figura	Magaz.	Codice	Descrizione
2881	GRUPPO USCITA	0	000000K13TB	ACCUGLIDE HEAD 2" K13 TOP TYPE B

Posizione	Codice	Descrizione	U.M.	Quantita'
1	78807013921	BUFFING ARM SUB ASS.Y	PZ	1
2	78807013913	BUFFING ARM SUB ASSY	PZ	1
3	78805265754	SHAFT - ROLLER, 10X60	PZ	1
4	78805265861	BUSHING - BUFFING ROLLER	PZ	1
5	78805761786	ROLLER - BUFFING NM	PZ	1
7	78807012204	SPACER - SPRING	PZ	1
8	78801791092	SHAFT-10X90MM	PZ	1
9	26100358295	SCREW HEX.HD.M6X12	PZ	6
10	78807012741	SPRING - UPPER	PZ	1
11	78807012444	HOLDER - SPRING	PZ	1

=====
 ===== Data 04/07/90



K13-3M (TOP)

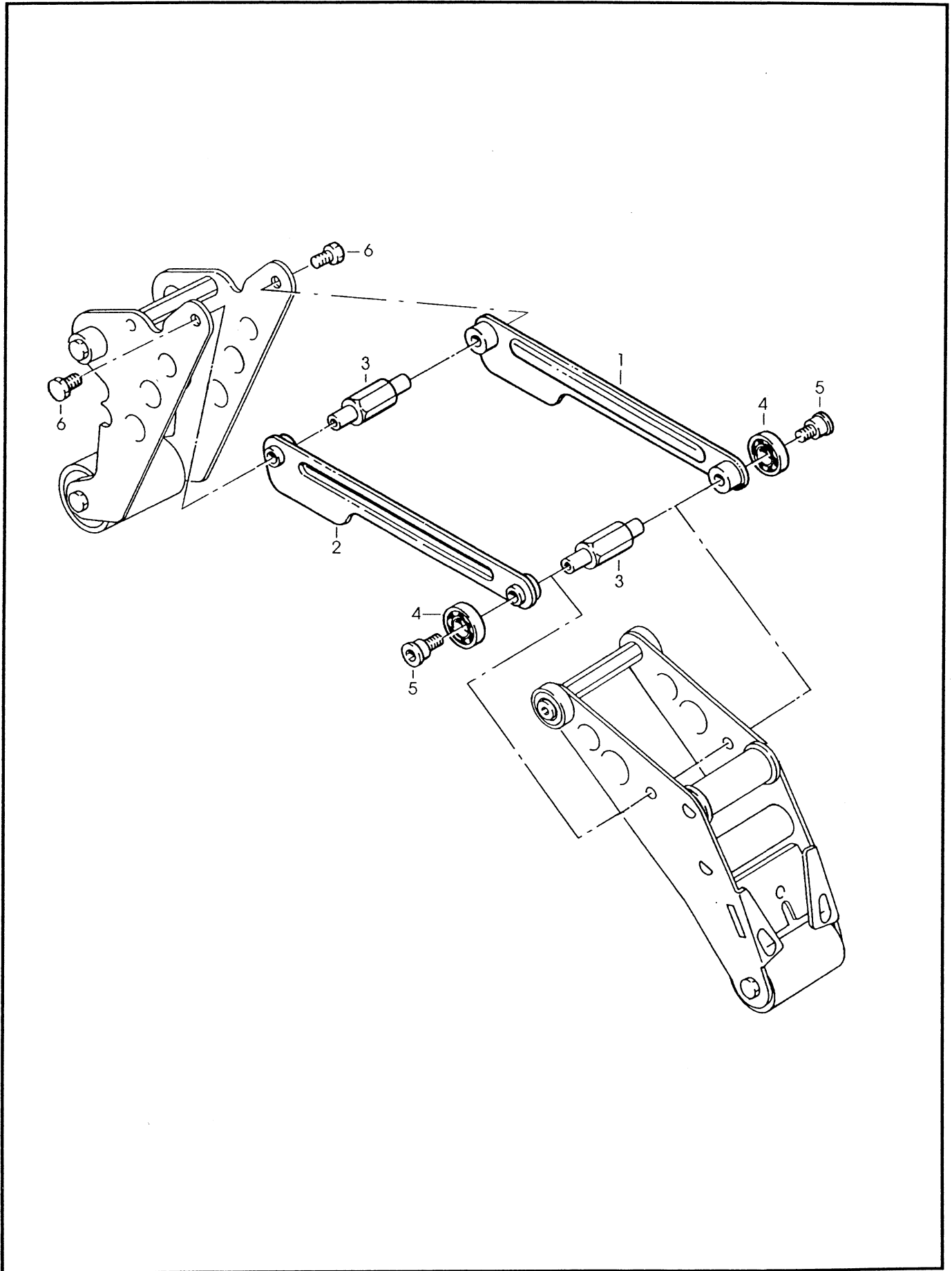
Giu. 96

Fig. **2881**

Figura	Descrizione figura	Magaz.	Codice	Descrizione
2882	GRUPPO LEVE	0	000000K13TB	ACCUGLIDE HEAD 2" K13 TOP TYPE B

Posizione	Codice	Descrizione	U.M.	Quantita'
1	78807013889	LINK - ARM BUSHING ASS.Y	PZ	1
2	78807013897	LINK - ARM BUSHING ASS.Y	PZ	1
3	78807012717	SHAFT - PIVOT	PZ	2
4	78801790821	BEARING-SPECIAL 30MM	PZ	2
5	78801791068	SCREW-BEARING SHOULDER	PZ	2
6	26100358287	SCREW - SPEC., HEX. HD. M6X10	PZ	2

=====
 ===== Data 04/07/9



K13-3M

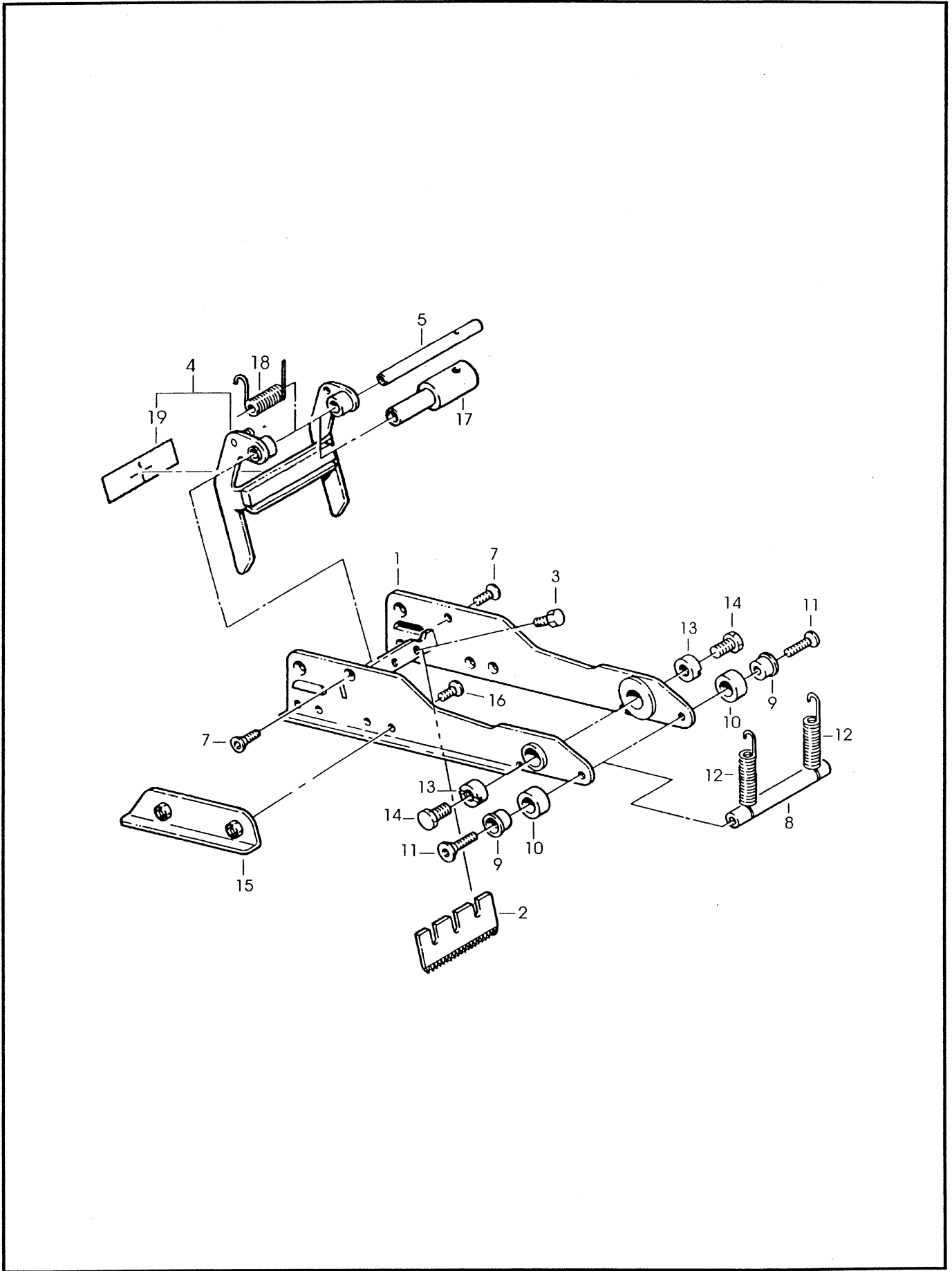
Lug. 96

Fig. **2882**

Figura	Descrizione figura	Magaz.	Codice	Descrizione
2883	GRUPPO PORTALAMA	0	78811408299	ACCUGLIDE II - 2", LOWER TYPE 39600

Posizione	Codice	Descrizione	U.M.	Quantita'
1	78807012170	FRAME - CUTOFF WELDMENT	PZ	1
2	78801791738	KNIFE - 65mm/2.56 Inch	PZ	1
3	26100258172	SCREW - HEX HD M5X8 ZINC.PL	PZ	2
4	78807013715	GUARD - BLADE ASS'Y	PZ	1
5	78805265978	SHAFT-BLADE GUARD	PZ	1
7	26100547582	SCREW - FLAT HD, SOC.DR. M4X10	PZ	2
8	78801791357	SHAFT - SPACER	PZ	1
9	78805266000	SPACER	PZ	2
10	78807012691	BUMPER	PZ	2
11	26100547574	SCREW - FLAT HD, SOC.DR. M5X20	PZ	2
12	78805266026	SPRING - CUTTER	PZ	2
13	78801791324	PIVOT-CUTTER LEVER	PZ	2
14	26100358287	SCREW - SPEC., HEX. HD. M6X10	PZ	2
15	78807012162	SLIDE - EXTENSION	PZ	2
16	26100865745	SCREW - FLAT HD, PHIL.DR.M4X10	PZ	4
17	78811370317	BUSHING - 59.5 mm LONG	PZ	1
18	78811370309	SPRING - TORSION	PZ	1
19	78807013350	LABEL - WARNING, SHARP KNIFE	PZ	1

Data 25/03/98



K13-3M

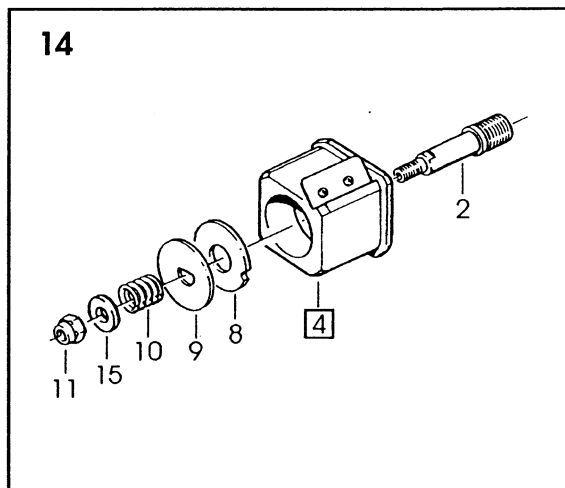
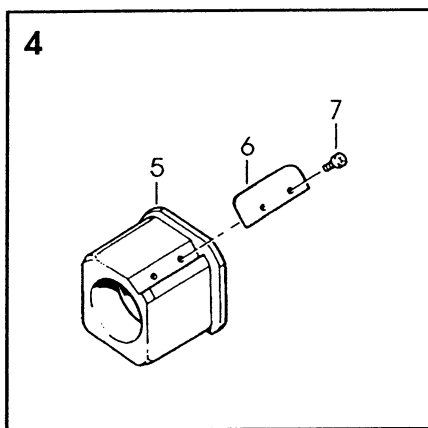
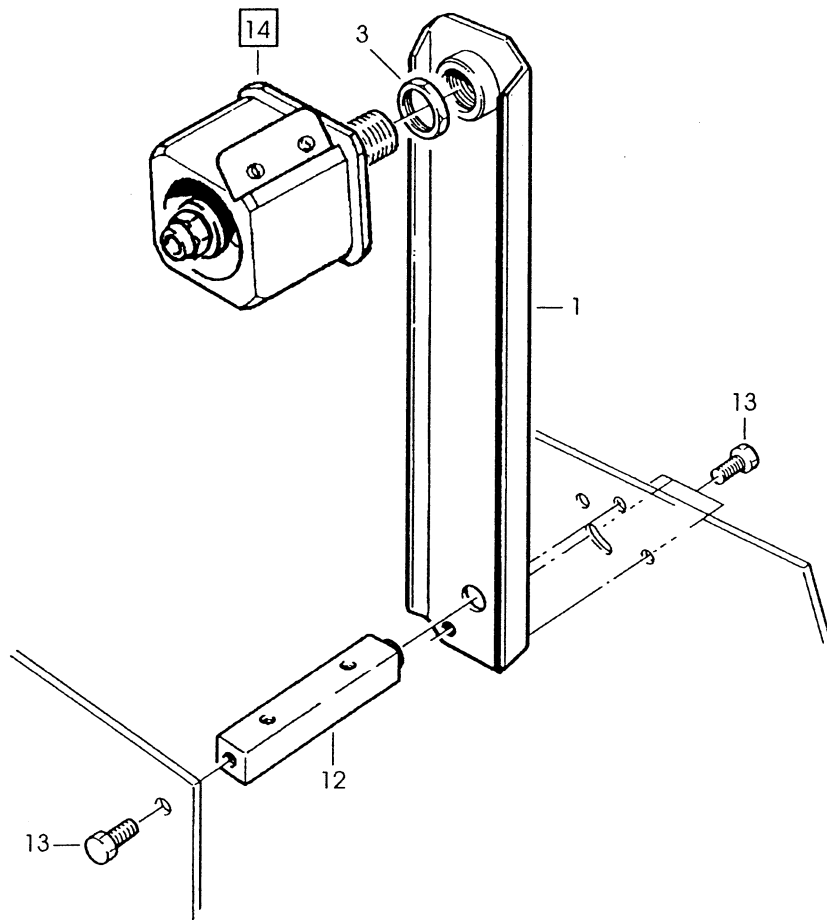
Mar. 98

Fig.2883

Figura	Descrizione figura	Magaz.	Codice	Descrizione
2884	GRUPPO PORTAROTOLO	0	000000K13TB	ACCUGLIDE HEAD 2" K13 TOP TYPE B

Posizione	Codice	Descrizione	U.M.	Quantita'
1	78807013954	BRACKET - BUSHING ASS.Y	PZ	1
2	78807645193	SHAFT - TAPE DRUM	PZ	1
3	78801791696	NUT-M18X1	PZ	1
4	78807015694	TAPE DRUM ASSY - 2" WIDE	PZ	1
5	78805267495	TAPE DRUM	PZ	1
6	78805262686	LEAF SPRING	PZ	1
7	26100257539	SCREW-SELF TAPPING	PZ	2
8	78806081721	WASHER-FRICTION	PZ	1
9	78805262710	WASHER-TAPE DRUM	PZ	1
10	78810010484	SPRING - CORE HOLDER	PZ	1
11	78801790771	NUT - SELF-LOCKING M10X1	PZ	1
12	78810010468	SPACER - BRACKET	PZ	1
13	26100358295	SCREW HEX.HD.M6X12	PZ	4
14	78806084741	TAPE DRUM ASS.Y 2" HEAD W/O BRACKET/LOCK PLATE	PZ	1
15	26100455109	WASHER - PLAIN, M10	PZ	1

=====
===== Data 09/07/9



K13-3M

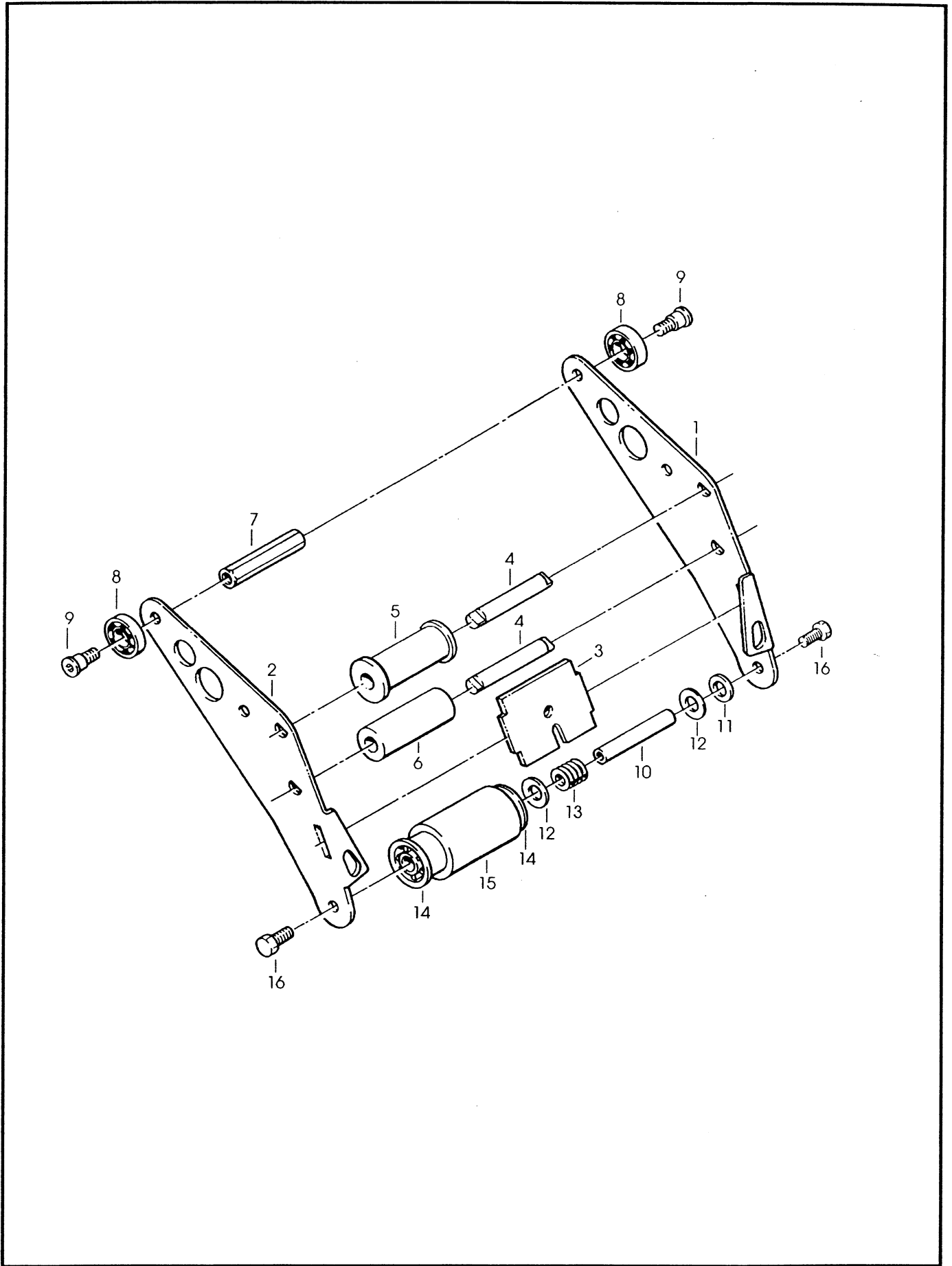
Lug. 96

Fig. **2884**

Figura	Descrizione figura	Magaz.	Codice	Descrizione
2880	GRUPPO ENTRATA	0	78811408299	ACCUGLIDE II - 2", LOWER TYPE 39600

Posizione	Codice	Descrizione	U.M.	Quantita'
1	78807012063	ARM - APPLYING, R/H	PZ	1
2	78807012071	ARM - APPLYING, L/H	PZ	1
3	78807012212	PLATE - TAPE	PZ	1
4	78807013095	SHAFT - ROLLER	PZ	2
5	78807013673	ROLLER - KNURLED ASS'Y	PZ	1
6	78807012667	ROLLER - WRAP	PZ	1
7	78805265804	SPACER - REAR	PZ	1
8	78801790821	BEARING-SPECIAL 30MM	PZ	2
9	78801791068	SCREW-BEARING SHOULDER	PZ	2
10	78805265754	SHAFT - 10x60 W/HEXAGON	PZ	1
11	78801790748	WASHER-NYLON 15MM	PZ	1
12	78805265663	WASHER - FRICTION	PZ	2
13	78805265671	SPRING - COMPRESSION	PZ	1
14	78806083958	BUSHING-APPLYING ROLLER	PZ	1
15	78805761794	ROLLER - APPLYING	PZ	1
16	26100358295	SCREW HEX.HD.M6X12	PZ	2

Data 29/01/98



K13-3M

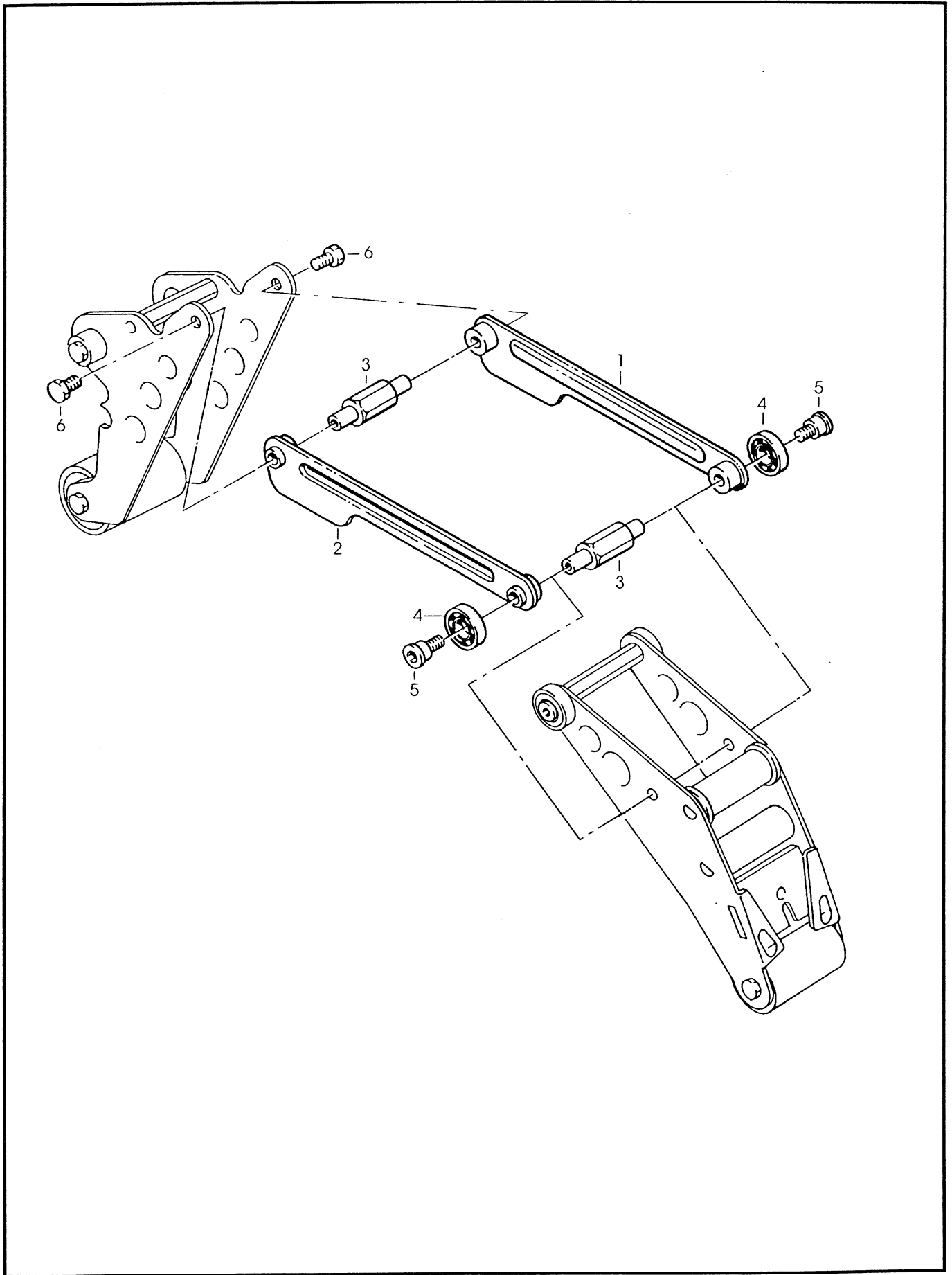
Glu. 96

Fig. 2880

Figura	Descrizione figura	Magaz.	Codice	Descrizione
2882	GRUPPO LEVE	0	000000k1388	ACCUGLIDE HEAD 2" K13 BOTTOM TYPE B

Posizione	Codice	Descrizione	U.M.	Quantita'
1	78807013889	LINK - ARM BUSHING ASS.Y	PZ	1
2	78807013897	LINK - ARM BUSHING ASS.Y	PZ	1
3	78807012717	SHAFT - PIVOT	PZ	2
4	78801790821	BEARING-SPECIAL 30MM	PZ	2
5	78801791068	SCREW-BEARING SHOULDER	PZ	2
6	26100358287	SCREW - SPEC., HEX. HD. M6X10	PZ	2

=====
 ===== Data 04/07/9



K13-3M

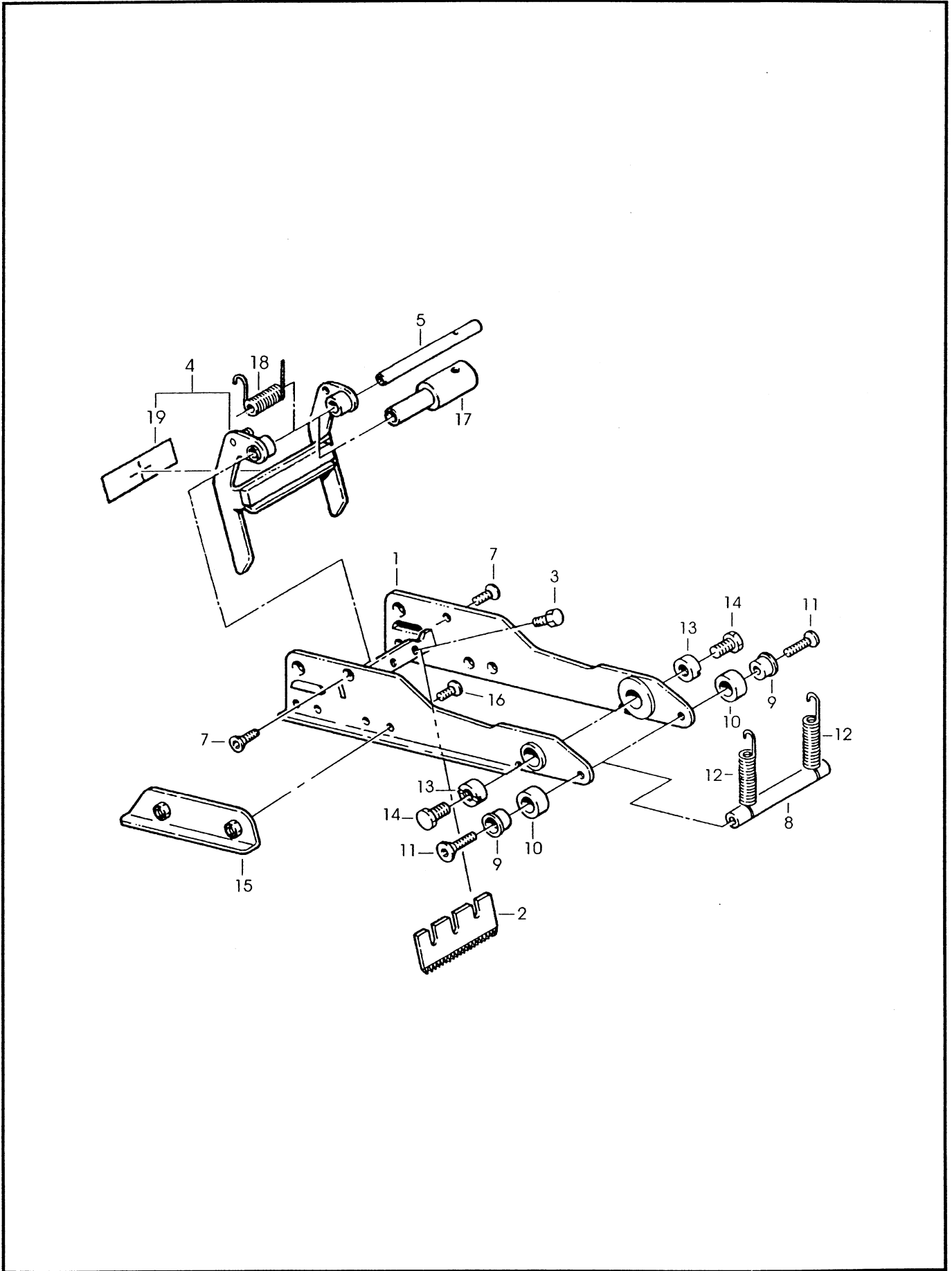
Lug. 96

Fig. 2882

Figura	Descrizione figura	Magaz.	Codice	Descrizione
2883	GRUPPO PORTALAMA	0	78811408281	ACCUGLIDE II - 2", UPPER TYPE 39600

Posizione	Codice	Descrizione	U.M.	Quantita'
1	78807012170	FRAME - CUTOFF WELDMENT	PZ	1
2	78801791738	KNIFE - 65mm/2.56 Inch	PZ	1
3	26100258172	SCREW - HEX HD M5X8 ZINC.PL	PZ	2
4	78807013715	GUARD - BLADE ASS'Y	PZ	1
5	78805265978	SHAFT-BLADE GUARD	PZ	1
7	26100547582	SCREW - FLAT HD, SOC.DR. M4X10	PZ	2
8	78801791357	SHAFT - SPACER	PZ	1
9	78805266000	SPACER	PZ	2
10	78807012691	BUMPER	PZ	2
11	26100547574	SCREW - FLAT HD, SOC.DR. M5X20	PZ	2
12	78805266026	SPRING - CUTTER	PZ	2
13	78801791324	PIVOT-CUTTER LEVER	PZ	2
14	26100358287	SCREW - SPEC., HEX. HD. M6X10	PZ	2
15	78807012162	SLIDE - EXTENSION	PZ	2
16	26100865745	SCREW - FLAT HD, PHIL.DR.M4X10	PZ	4
17	78811370317	BUSHING - 59.5 mm LONG	PZ	1
18	78811370309	SPRING - TORSION	PZ	1
19	78807013350	LABEL - WARNING, SHARP KNIFE	PZ	1

Data 25/03/96



K13-3M

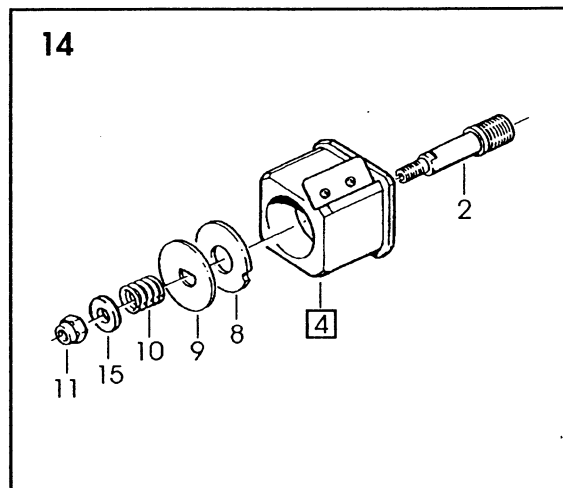
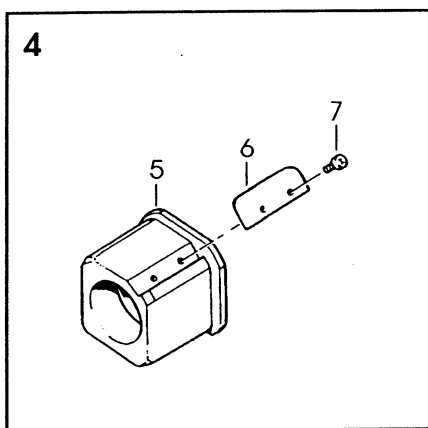
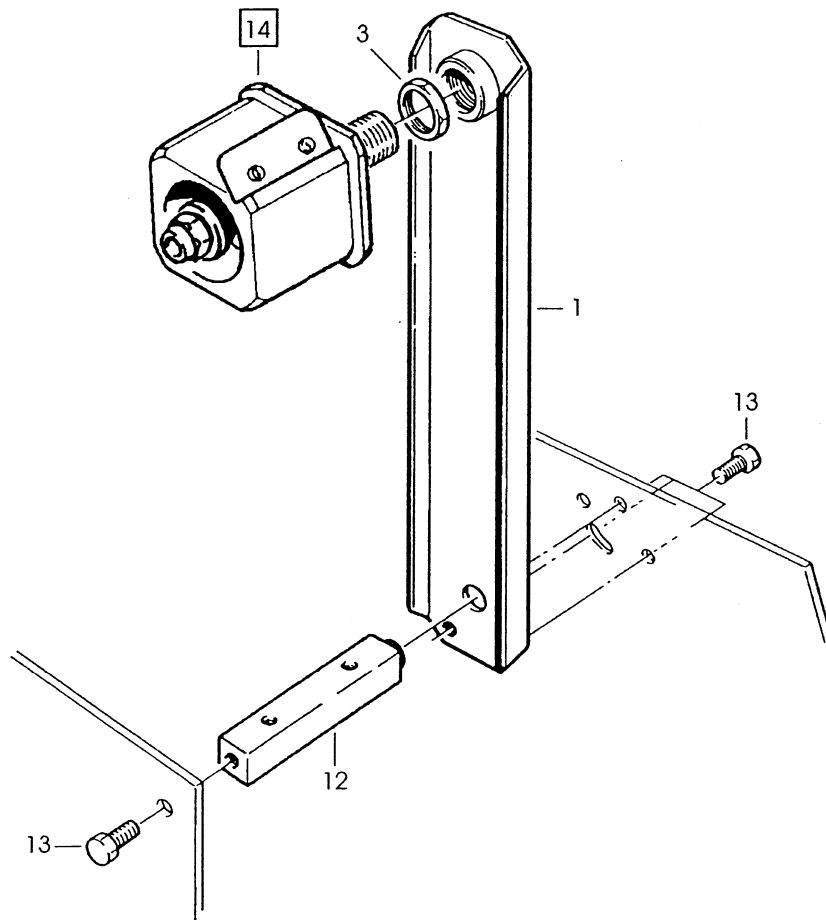
Mar. 98

Fig.2883

Figura	Descrizione figura	Magaz.	Codice	Descrizione
2884	GRUPPO PORTAROTOLO	0	000000K138B	ACCUGLIDE HEAD 2" K13 BOTTOM TYPE B

Posizione	Codice	Descrizione	U.M.	Quantita'
1	78807013954	BRACKET - BUSHING ASS.Y	PZ	1
2	78807645193	SHAFT - TAPE DRUM	PZ	1
3	78801791696	NUT-M18X1	PZ	1
4	78807015694	TAPE DRUM ASSY - 2" WIDE	PZ	1
5	78805267495	TAPE DRUM	PZ	1
6	78805262686	LEAF SPRING	PZ	1
7	26100257539	SCREW-SELF TAPPING	PZ	2
8	78806081721	WASHER-FRICTION	PZ	1
9	78805262710	WASHER-TAPE DRUM	PZ	1
10	78810010484	SPRING - CORE HOLDER	PZ	1
11	78801790771	NUT - SELF-LOCKING M10X1	PZ	1
12	78810010468	SPACER - BRACKET	PZ	1
13	26100358295	SCREW HEX.HD.M6X12	PZ	4
14	78806084741	TAPE DRUM ASS.Y 2" HEAD W/O BRACKET/LOCK PLATE	PZ	1
15	26100455109	WASHER - PLAIN, M10	PZ	1

=====
Data 09/07/96



K13-3M

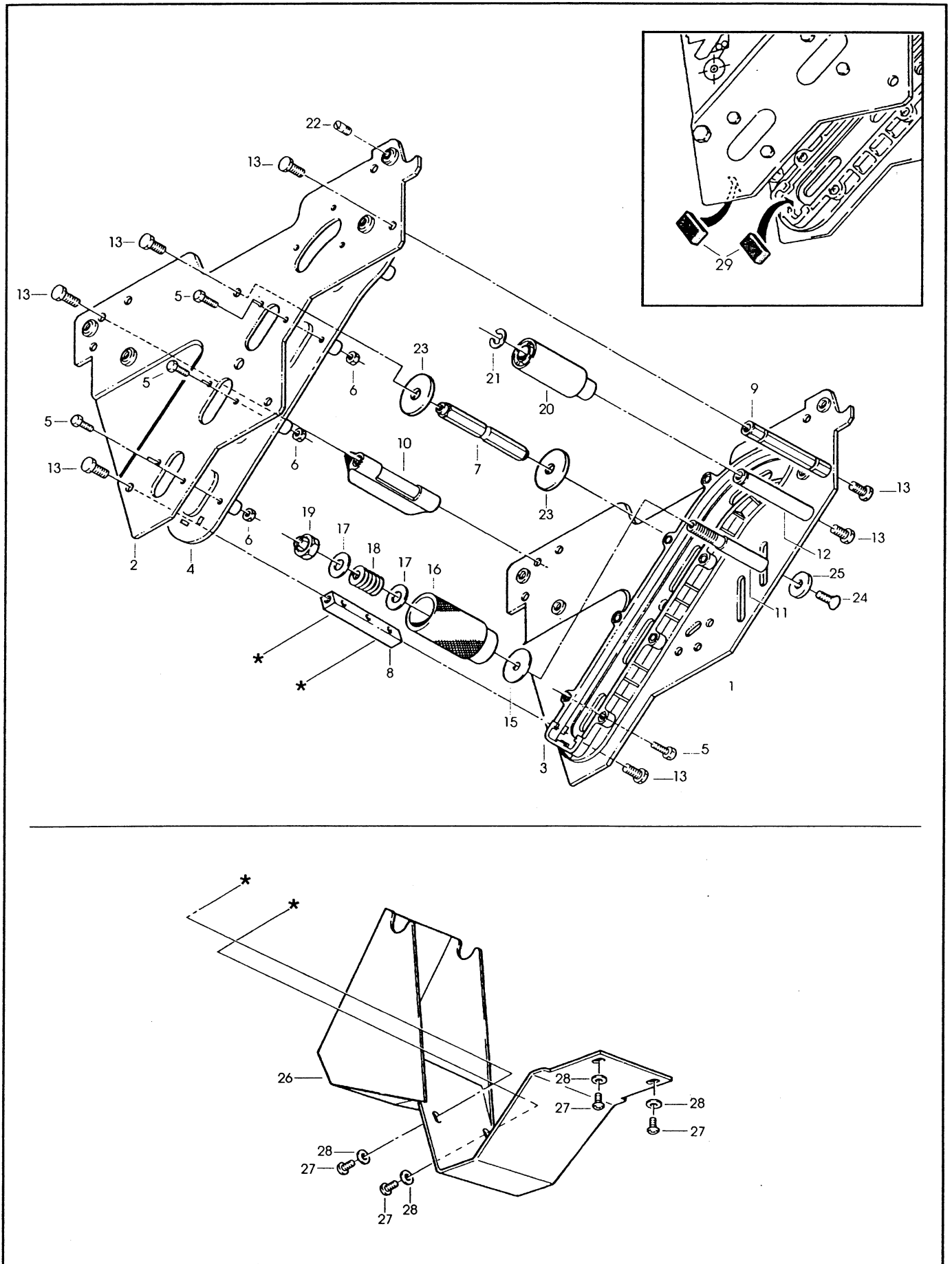
Lug. 96

Fig. 2884

Figura	Descrizione figura	Magaz.	Codice	Descrizione
2885	GRUPPO SPALLE	0	78811408299	ACCUGLIDE II - 2". LOWER TYPE 39600

Posizione	Codice	Descrizione	U.M.	Quantita`
1	78807013699	FRAME - TAPE MOUNT LOWER ASSY	PZ	1
2	78807013707	FRAME - FRONT LOWER ASSY	PZ	1
3	78806841447	GUIDE - #2	PZ	1
4	78806841439	GUIDE - #1	PZ	1
5	83000273363	SCREW - HEX HD M4X14 ZINC.PL	PZ	18
6	78801074168	NUT-METRIC, HEX, STEEL M4	PZ	18
7	78807012519	SPACER - SPRING	PZ	1
8	78805487648	SPACER - 10X10X90MM	PZ	1
9	78805265606	SPACER - FRONT	PZ	1
10	78806079360	BRUSH ASSY	PZ	1
11	78805265648	SHAFT - TENSION ROLLER	PZ	1
12	78805265689	SHAFT - WRAP ROLLER	PZ	1
13	26100358295	SCREW HEX.HD.M6X12	PZ	9
15	78810010096	WASHER - SPECIAL	PZ	1
16	78805266067	ROLLER - TENSION BOTTOM	PZ	1
17	26100455109	WASHER - PLAIN, M10	PZ	2
18	78805265671	SPRING - COMPRESSION	PZ	1
19	78801790771	NUT - SELF-LOCKING M10X1	PZ	1
20	78805265697	ROLLER - WRAP	PZ	1
21	26100016133	RING - RETAINING 10DIN6799	PZ	1
22	78807645003	STUD - MOUNTING	PZ	4
23	78807652421	STOP - CUTOFF FRAME	PZ	2
24	78806081796	SCREW-FLAT HD HEX M6X20	PZ	1
25	78807654773	WASHER - SPECIAL /6.5X20X4	PZ	1
26	78810010476	GUARD-HEAD	PZ	1
27	78801790664	SCREW - METRIC, M5X12	PZ	4
28	78800557411	WASHER - FLAT, M5	PZ	4
29	78807647348	BUMPER	PZ	2

==== Data 27/05/2003 ====



K13-3M (BOTTOM)

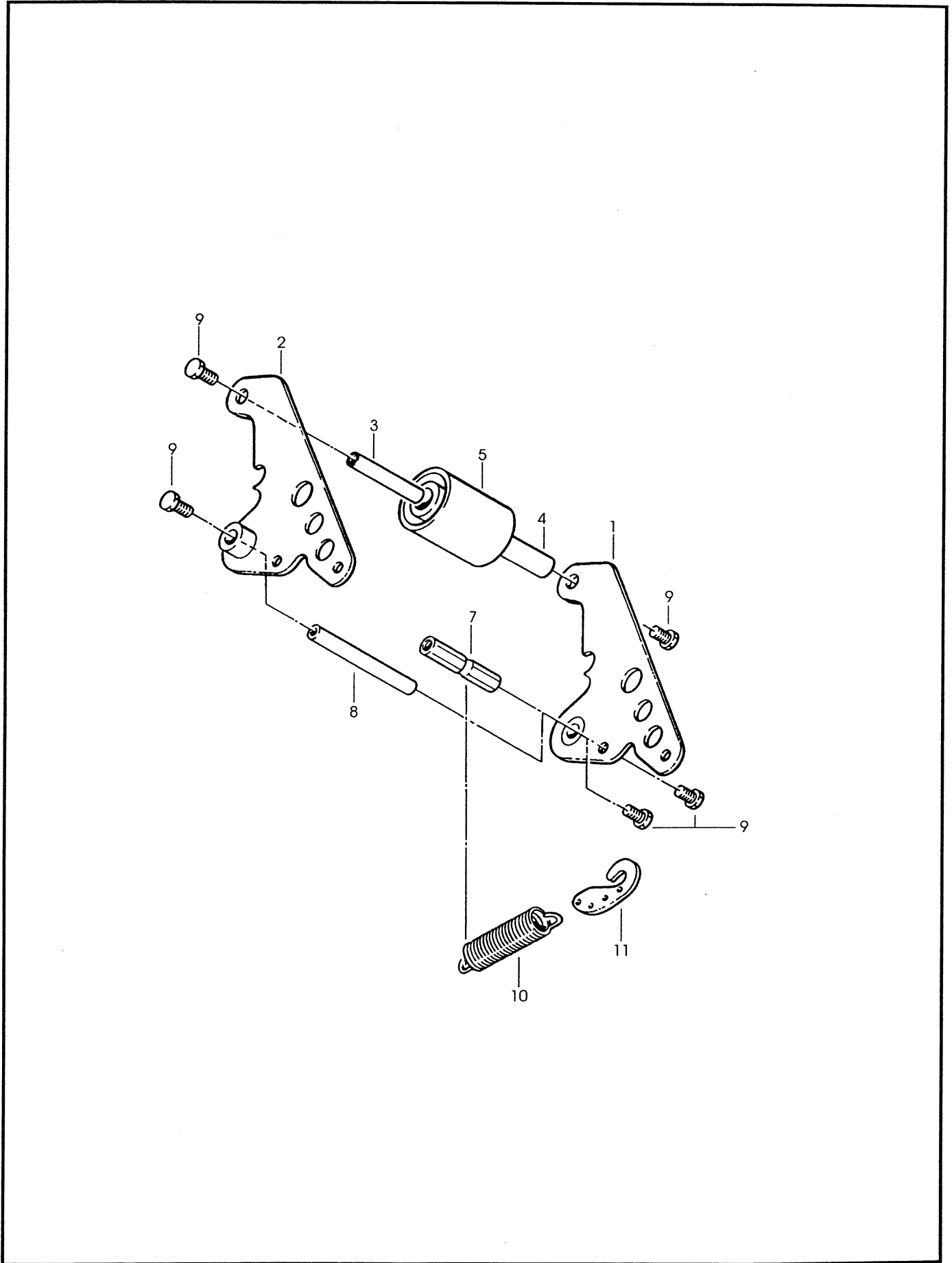
Ott. 96

Fig. **2885**

Figura	Descrizione figura	Magaz.	Codice	Descrizione
2886	GRUPPO USCITA	0	000000K13BB	ACCUGLIDE HEAD 2" K13 BOTTOM TYPE B

Posizione	Codice	Descrizione	U.M.	Quantita'
1	78807013913	BUFFING ARM SUB ASSY	PZ	1
2	78807013921	BUFFING ARM SUB ASS.Y	PZ	1
3	78805265754	SHAFT - ROLLER, 10X60	PZ	1
4	78805265861	BUSHING - BUFFING ROLLER	PZ	1
5	78805761786	ROLLER - BUFFING NM	PZ	1
7	78807012204	SPACER - SPRING	PZ	1
8	78801791092	SHAFT-10X90MM	PZ	1
9	26100358295	SCREW HEX.HD.M6X12	PZ	6
10	78807012733	SPRING - LOWER	PZ	1
11	78807012444	HOLDER - SPRING	PZ	1

=====
Data 04/07/9



K13-3M (BOTTOM)

Giu. 96

Fig. **2886**

