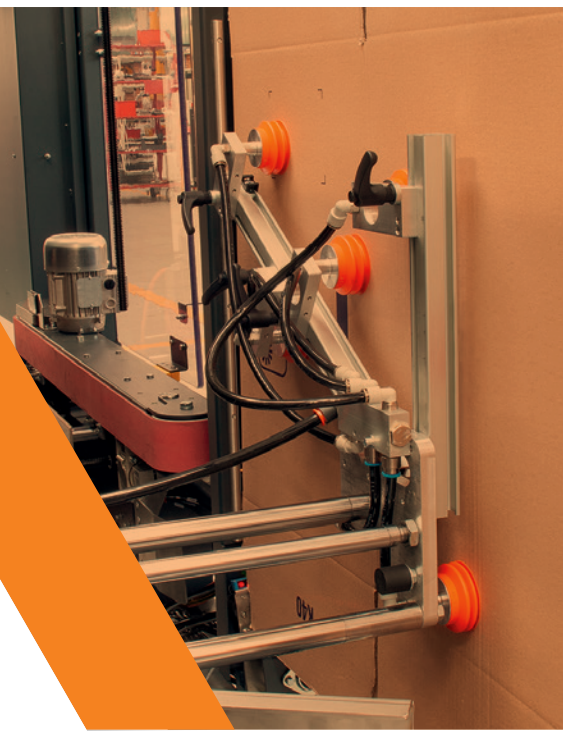


EZ-Box

HIGH SPEED AUTOMATIC
CASE ERECTOR



TAPING EQUIPMENT

100%
MADE in ITALY

HOW TO SELECT A CASE ERECTOR?

The case erection process, **it is crucial to choose the right solution to your needs**. The suitability of a case erector for your specific processes, and which one to choose, depends on various factors. **To take the right decision, it's crucial to consider the following points:**



PRODUCTIVITY & BOX SIZES

Standard model up to **10 bpm**, or **high-spe-**
ed models up to **20 bpm** or even more. **Basic**
models cover **smaller box ranges** and **types**
compared to modular machines.



BOX LOADING & FEEDING

It is **crucial** how the **boxes** are **managed** in the
magazine and handled for feeding into the
machine.



BOX SQUARING

How the blanks are picked-up, opened and
squared. **Squaring** mode and squaring quality
are fundamental, as cases are **easy to stack**,
avoid jams downstream, **protects** the pro-
ducts inside better.



BOX TRANSFER & SEALING

The way to manage the **transport** of the box
and the **quality** of **sealing** technology have
strong impact on the final output.



HMI & INTEGRATION

The models differ in **control technology** and
interface, in architecture and the complexity
of the **exchange signals** with the other machi-
nes in the **packaging line**.



SAFETY

Safety should **for granted** but it is possible to
get **much more** than the must-to-have within
the Machine Regulation limits.

Based on these fundamental features, **SIAT** has developed **solutions** that fit the needs of the market, offering in his range **two main types of machines**:

STANDARD MACHINES

Entry Level case Erectors



WAREHOUSES & SMALL PRODUCTION COMPANIES

Smaller businesses, usually with simple packaging lines,
often hybrid enviroment with consistent presence of labor,
especially in box filling.

MODULAR MACHINES

Premium Level case Erectors



BIG PRODUCTION & MANUFACTURING COMPANIES

Big businesses with increasing volumes, where Case Erectors
are part of fully automatic packaging lines, with higher level
of communication and with the need of extra features to
optimize the production and limit line stops.

Quick Return on Investment

The investment in automatic case erectors is
often perceived as high and intimidating in
the packaging industry. However, compa-
nies who took this step quickly justified the
initial cost.

If production exceeds 2.000 boxes per day,
the investment payback is achieved within
the first year.



EZ-BOX AUTOMATIC HIGH-SPEED CASE ERECTOR

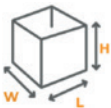
EZ-Box represents a **range of fully automatic case erectors** developed to fulfill the needs of high-demanding industries, designed to form, fold and at a later stage to seal the bottom side of boxes before the downstream operation of filling and top sealing. **EZ-Box** is **flexible, configurable and easily integrable into packaging lines** and represents one of the **most high-performing models available on the market**. It is available on different platforms and configurations: **EZ-Box 20** as standard, the **EZ-Box 20 Tall** for high-boxes and **EZ-Box XL** for bigger formats.



EZ-Box 20 Std Version



UP TO **20 BPM**



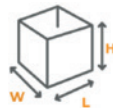
MIN. BOX SIZE (L x W x H)
200 x 150 x 100

MAX. BOX SIZE (L x W x H)
600 x 400 x 450

EZ-Box 20 Tall Version



UP TO **20 BPM**



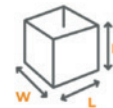
MIN. BOX SIZE (L x W x H)
200 x 150 x 300

MAX. BOX SIZE (L x W x H)
600 x 380 x 600

EZ-Box XL



UP TO **15 BPM**



MIN. BOX SIZE (L x W x H)
200 x 200 x 250

MAX. BOX SIZE (L x W x H)
620 x 500 x 600



BEST CONTROL INTEGRATION

Electrical Cabinet with HMI and utilities on **one side** to ease controls and maintenance, with **7" Touchscreen display** based on **Siemens PLC S7-1200**, able to provide full control and diagnostics. **Complete signals exchange SIAT Connect System** embedded for the remote assistance. **Zero-Line Machine** to make it easier to align and position the downstream line.



MOTORIZED BOX FEEDING

Foldable Motorized Walk-in Magazine for easy blank loading up to **120 blanks** (optional 220) with **end-of-boxes detection**, and **3 minutes manual box size setting** for the maximum downtime's reduction.



PERFECT SQUARING

Double Axis System which guarantees **square boxes** through pneumatic pick-up arm, black squaring paddle and positive flap folding.



SAFETY AT A GLANCE



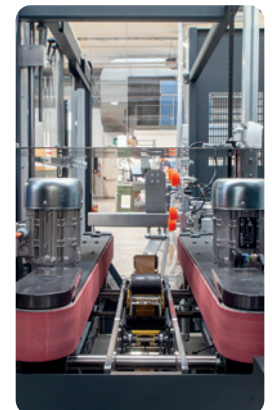
The standard machine is equipped with complete set of safety fences which follow the most updated machine regulations, with **interlocks and RFID sensor**. Movable barriers and part of the guards are **transparent to maximize the internal control of the machine**.

In accordance with current safety regulations, the machine is available without certain protective fences.



EXCELLENT SEALING

High friction coefficient drive belts in combination with **SIAT K Taping Unit**, lead to smooth and consistent box transfer and bottom sealing.

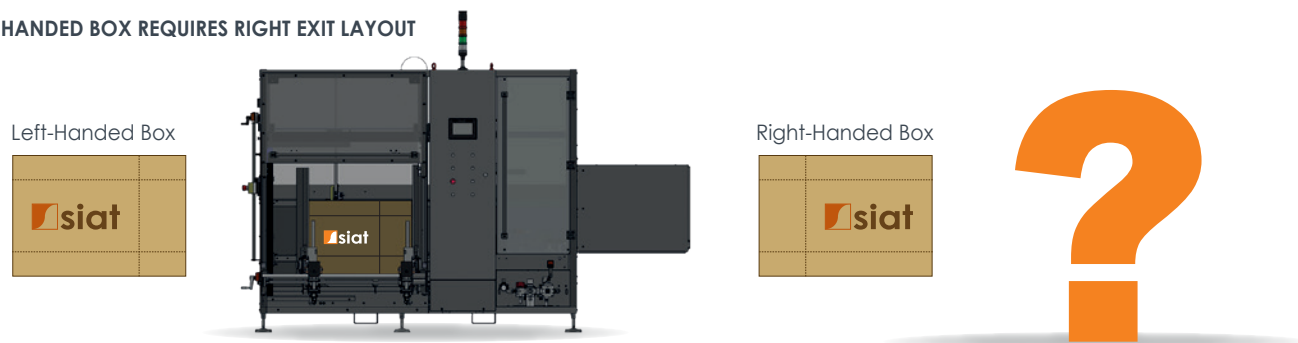


THE REVOLUTION OF EZ-Box: THE OPPOSITE HAND KIT

Dealing with a range of corrugated boxes with **varying print directions**. Do you have both right and left-handed boxes that you would like to use interchangeably? Currently the solutions are limited and annoying: consider neutral boxes only, change your packaging design and graphics, overturn boxes or even worse invest in another case erector with opposite layout?

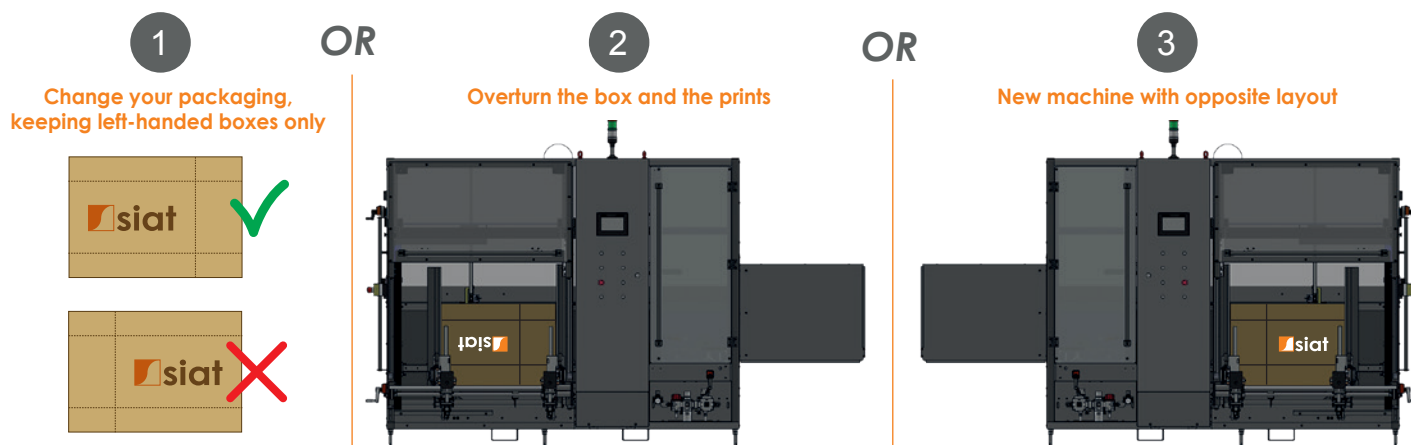
EZ-BOX SOLVES EVERY PROBLEM, giving a completely new solution, unique in the market: installing the **Opposite Hand Kit**, you can finally process. **It is capable of opening and squaring the box in the opposite way compared to the standard box typically suited for the chosen model**, ensuring maximum flexibility and thereby reducing organizational complications and/or the need for significant additional investments.

LEFT-HANDED BOX REQUIRES RIGHT EXIT LAYOUT



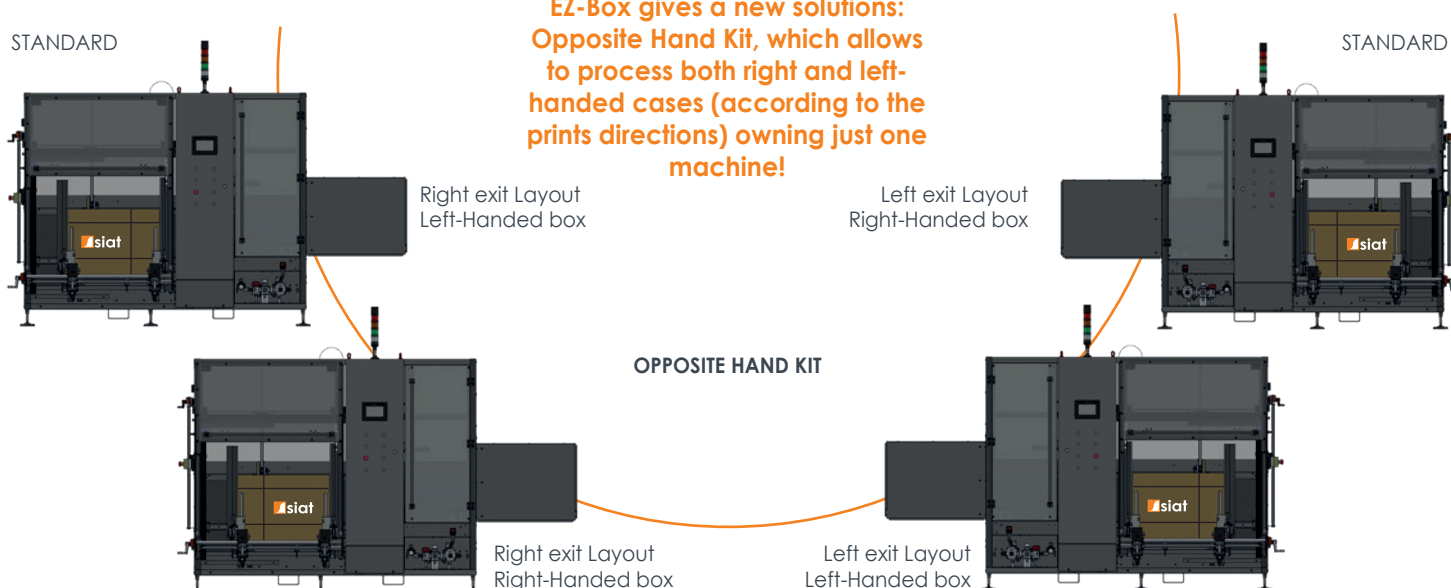
WITHOUT EZ-Box

Negative impact on company image or possibility of mishandling the box, risking damage to product inside.



WITH EZ-Box

EZ-Box gives a new solutions:
Opposite Hand Kit, which allows to process both right and left-handed cases (according to the prints directions) owning just one machine!



SIAT Group

SIAT Group is a **global leader** in **case sealing** and **end-of-line packaging solutions**, with decades of experience and a strong focus on innovation and integration. The Group is not only a trusted supplier of **standalone machines**, but also a strategic partner for the development of **customized, fully integrated packaging lines**.

Thanks to the close collaboration with its U.S. sister company **Combi**, a specialist in **packaging line customization**, SIAT Group is able to cover all **key end-of-line (EOL) packaging processes involving regular slotted containers (RSC), or American-style boxes**:

- Case erecting for **square, stable boxes** ready for transport
- Sealing with various technologies to ensure **content protection**
- Wrapping and strapping to increase **safety** and **prevent product damage**
- Robotic palletizing for **efficient load handling**

SIAT Group continues to expand its capabilities, with ongoing investments in **palletizing** and **box-filling systems**. The objective is to become a one-stop partner for customers—capable of managing the entire project lifecycle, from needs assessment to commissioning.

Planning to upgrade your current packaging line or build a new one?

Our Application Engineering Department is fully dedicated to special projects and ready to support you in identifying and developing the best solution for your operations. Please contact your sales representative for more information





The SIAT Group



Headquartered in Northern Italy, SIAT is established as a quality leader in end-of-line industrial packaging solutions, specializing in taping, strapping and wrapping machines, as well as flexographic printing machines.

Based in Ohio (USA), Combi is a Northern American producer of industrial packaging systems, engineering and manufacturing case erectors, tray formers, case sealers, case packers, robotic packaging systems, and ergonomic monoblock hand-packing stations.



Located in Northern Italy, Tam has been producing small metal parts and providing precision machining services for over 30 years.

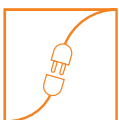
For over 50 years, we have been manufacturing high-tech equipment and are proud to be recognized by our customers as among the leading brands in packaging machinery and components. Our solutions are utilized across various industries, including food and beverage, e-commerce, logistics, packaging, and consumer products.

Our machines are designed to:



Increase customer productivity

Our machines boast an average life of 25 years, while our customers pay off their investment in only 4 to 5 months.



Lower the total cost of ownership

Our machines are designed for easy maintenance and simple installation. They are developed to be user-friendly and durable, while also being easy to integrate and manage.



Reduce environmental impact

We strongly believe in pursuing this goal through our environmental approach, envisioning the future of packaging as a collaborative effort with our customers to find the most sustainable and secure solutions. Each machine is designed to consume less energy, minimize material usage, and reduce waste.



Be connected

Thanks to Optirun, the SIAT Group's IoT solutions brand, we can calculate tape and box consumption, monitor film usage, and track all machine parameters to prevent downtime.



E-commerce

Buy directly at www.shop.siat.com



Service

Contact our field service Team at servicenow@siat.com



Via Puecher 22,
22078 Turate - Como
www.siat.com

